

# **Publications in English of the Geological Survey of Denmark and Greenland: the scientific series and other issues**

Peter R. Dawes and Esben W. Glendal



# **Publications in English of the Geological Survey of Denmark and Greenland: the scientific series and other issues**

Peter R. Dawes and Esben W. Glendal

Publications Committee: Report No. 3



The fusion in 1995 of the Geological Survey of Greenland (Grønlands Geologiske Undersøgelse – GGU) and the Geological Survey of Denmark (Danmarks Geologiske Undersøgelse – DGU) produced a new national geological survey, viz. The Geological Survey of Denmark and Greenland (Danmarks og Grønlands Geologiske Undersøgelse, with the pet-name GEUS).

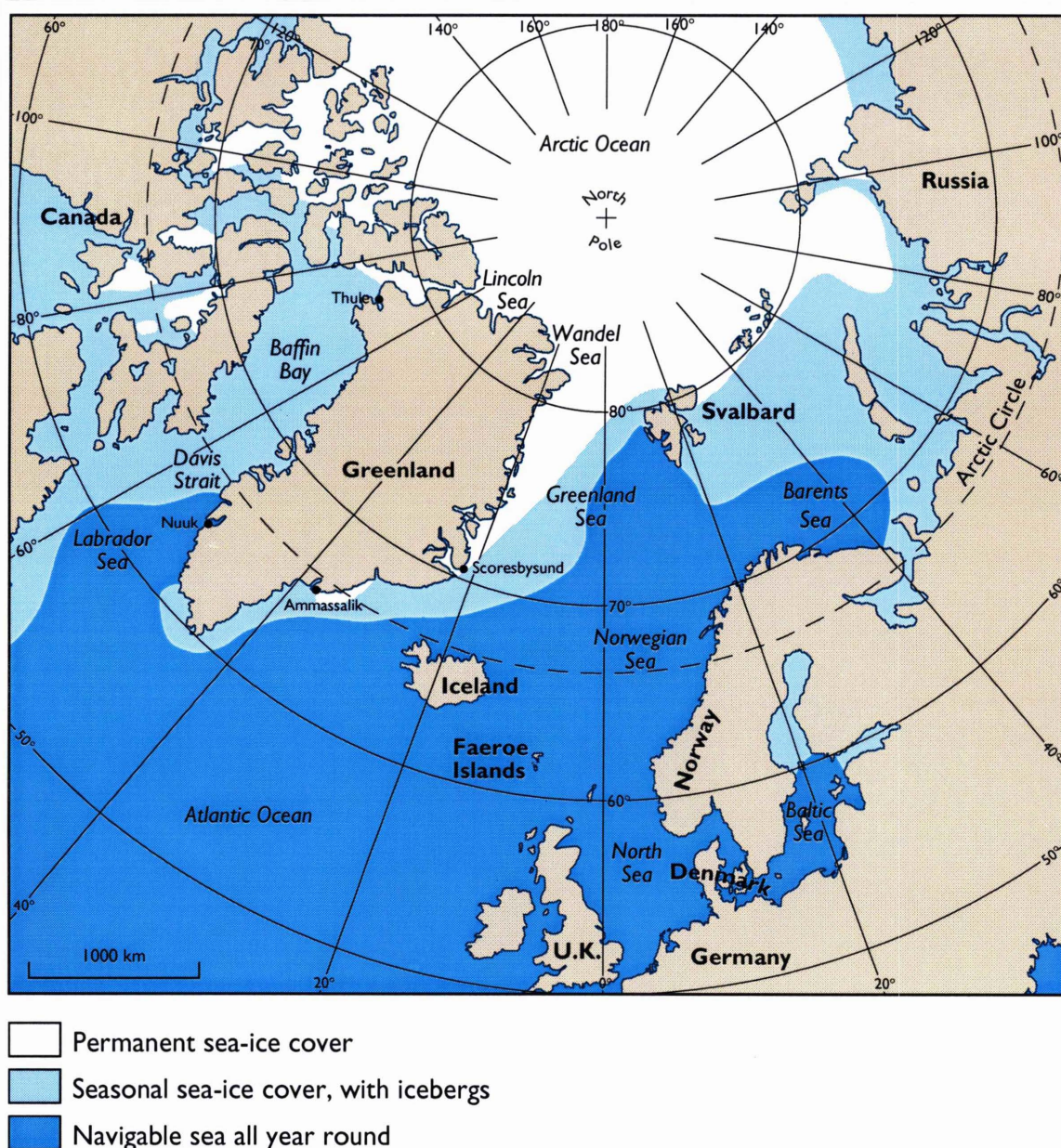
## Contents

Introduction .....	6
The scope of this report .....	7
Use of the pet-name GEUS .....	8
Change-over from DGU/GGU to GEUS publications .....	8
Spectrum of Survey publications .....	9
The geological publications in English: status .....	9
1. The scientific series .....	9
2. Open file-type reports .....	10
3. Newsletters to industry .....	11
Editing and production responsibilities .....	13
Publications Committee .....	13
Manuscripts for the GEUS scientific series .....	13
Manuscripts intended for international journals .....	13
Sale and availability of Survey publications .....	14
Systematic description .....	15
1. The scientific series	
1.1 <i>Geology of Denmark Survey Bulletin</i> .....	17
1.2 <i>Geology of Greenland Survey Bulletin</i> .....	19
1.3 <i>Geology of Denmark and Greenland Map Series</i> .....	22
2. Open file-type reports	
2.1 <i>Danmarks og Grønlands Geologiske Undersøgelse Rapport</i> .....	25
3. Newsletters to industry	
3.1 <i>Greenland MINEX News</i> .....	28
3.2 <i>GHEXIS</i> .....	30
References .....	32
Plates .....	33
Appendix .....	39



## Introduction

As a consequence of ministerial reorganisation a new national geological survey, with the responsibility for geoscientific matters throughout the Kingdom of Denmark, was established in June 1995. This new institution – *The Geological Survey of Denmark and Greenland* – in the *Ministry of Environment and Energy*, has its headquarters in Copenhagen, with branch offices in the Faeroe Islands and Greenland in, respectively, the capital towns of Thorshavn and Nuuk (Fig. 1).



**Figure 1.**

Map of the North Atlantic – Arctic region showing Denmark, the Faeroe Islands and Greenland, forming the Kingdom of Denmark, for which the Geological Survey of Denmark and Greenland (GEUS) is the governmental research and advisory institution responsible for geological work. Average sea-ice conditions from Valeur *et al.* (1996). From Dawes (1997).

The new geological survey with the official name of *Danmarks og Grønlands Geologiske Undersøgelse* arose from the merger of the former *Geological Survey of Denmark* (*Danmarks Geologiske Undersøgelse* – DGU – that had the Faeroe Islands under its jurisdiction) and the former *Geological Survey of Greenland* (*Grønlands Geologiske Undersøgelse* – GGU). The Survey, known also by the pet-name GEUS, is presently assembled in the Thoravej office complex occupied by the former DGU in north-west Copenhagen and this address figures on the back-cover of this report. The address is, however, temporary. In 3–4 years GEUS will be relocated at the address of the former GGU in central Copenhagen (Øster Voldgade) and will be part of a new GEOCENTRE that will comprise the Geological Museum and the Institutes of Geology and Geography of the University of Copenhagen and, hopefully, the Danish Lithosphere Centre.

Not surprisingly, the consequences of the amalgamation of two independent geological surveys – DGU and GGU – were wide-ranging. With respect to publications, it meant the critical assessment of the nature of the ranges issued by the two former geological surveys, leading to a publication strategy for the new national geological survey. Of particular relevance here is that GEUS is a geological research and advisory institution for three geographically widely-separated countries, viz. Denmark, the Faeroe Islands and Greenland, that define a region spanning almost 30° of latitude from temperate to high arctic climates and from western Europe to North America (Fig. 1). Geologically, the region embraces opposing parts of the Eurasian and North American plates, with the Faeroes representing the volcanic rocks of the relatively young intervening North Atlantic Ocean.

## The scope of this report

This report in English is a companion to a previous report in Danish (*Danmarks og Grønlands Geologiske Undersøgelse Rapport 1996/95*) that describes the complete range of GEUS publications in print.

The main aim of this report is to present the range of *geological* publications in English issued by the *Geological Survey of Denmark and Greenland*. The Survey's official annual reports (including the *Project Catalogue*), which are wholly or in part in English, are not described here, but are mentioned below under 'Spectrum of GEUS' publications'. The report is directed to our foreign contacts and customer markets and to the libraries with which we collaborate and exchange our geological publications. The report also reviews the possibilities for publishing under the new Survey's auspices and thus it will be especially relevant for foreign institutes and colleagues engaged in projects with GEUS and who are involved in the presentation of results. It is also directed to those of our 'regular' contacts who, thoroughly conversant with the publication series of the former GGU and DGU, have sought information outlining the status of those series, and of the 'new' publications issued by GEUS.

The main section of the report consists of a systematic description of each of the six geological series in which the English language is used. These descriptions include information on topic emphasis and content, layout, format, refereeing procedure, editing, technical production, reprints, distribution, citation, etc. Each series is illustrated by a facsimile or mock-up of the publication; these are collected in colour plates at the rear of the report.

Geological surveys the world over are releasing an increasing amount of geodata in digital form and the traditional geological communication in print form is being supplemented and replaced by electronic databases capable of providing on-the-spot data and compilations in a variety of forms. GEUS launched its first electronic scientific issues this year (1997). However, the range of electronic publications is still being formalised and thus the present report deals only with publications in the printed form.

## Use of the pet-name GEUS

The official name of the new survey – *Danmarks og Grønlands Geologiske Undersøgelse* – is rather long for everyday usage. Thus for many purposes its abbreviated name GEUS, derived from the Danish name for a geological survey, **Geologisk Undersøgelse**, is used. The short pet-name GEUS is featured in the Survey's logo seen on the front of this publication and it is prominent on the Survey's writing paper, invoices and other documents. It is used within the Survey as an everyday synonym of the official Survey name. However, it should be noted that the name GEUS is not part of the authorised names of any scientific publications of the *Geological Survey of Denmark and Greenland*, and therefore should not be used for bibliographic purposes. The name is however included in the title of the Survey's quarterly popular periodical in Danish: *GEOLOGI – Nyt fra GEUS*.

## Change-over from DGU/GGU to GEUS publications

The change from DGU/GGU to GEUS publications has been not abrupt: 1996 was a year of transition characterised by the phasing out of the 'old' series and the introduction of 'new' (Dawes 1997). Several series of the two former geological surveys were discontinued in 1995, the year of amalgamation. Some series continued in 1996, viz. in those cases where manuscripts and maps were in press or had been specifically designed for outlet in DGU or GGU series. Thus, the last issues of *Danmarks Geologiske Undersøgelse Map Series* (no. 53), *Bulletin Grønlands Geologiske Undersøgelse* (nos 170–172) and *Thematic Map Series Grønlands Geologiske Undersøgelse* (1996/1) were published by GEUS concurrently with a new open file-type series, *Danmarks og Grønlands Geologiske Undersøgelse Rapport* that started in January 1996.

The majority of the publication series of the former DGU and GGU were discontinued by the end of 1996 but some, for example the newsletters *Greenland MINEX News* and *GHEXIS*, that are restricted to Greenland affairs, retain the same names under GEUS auspices and they continue the style, format and numbering of the previous GGU publications. One scientific series of the each of the former DGU and GGU continue under new names, viz. *Geology of Denmark Survey Bulletin* and *Geology of Greenland Survey Bulletin* (see under 'The scientific series' p. 9 and Table 1). Other publications have simply been renamed to indicate the change in affiliation.



## Spectrum of Survey publications

GEUS issues a full range of traditional survey publications – bulletins, reports and maps. Some of these are in English, others in Danish and in certain publications both languages are used. The publication range reflects the Survey's overall work commitment as a governmental research and advisory institution with responsibilities for three countries. The publications form a broad spectrum from geoscientific reports and maps dealing with the results of research programmes (mainly in English), to quicker-produced reports directed towards or ordered by industry (English or Danish) or by state and local governmental authorities (in Danish), to popular-scientific books, magazines, catalogues and brochures, some of which are directed to the educational systems in the three lands of the Kingdom of Denmark (mainly in Danish). The Survey's official annual report is in Danish; a *Project Catalogue* including a review of activities and list of publications was in 1997 produced in English. The annual report and the *Project Catalogue* are available free of charge.

As outlined above, this report deals with but one part of the GEUS publication range, viz. the six geological issues in English. The present report, as well as the report in Danish describing the complete GEUS printed range comprising 13 types (Dawes *et al.* 1996), are available free of charge. Other printed publications dealing with GEUS scientific issues are cited in the reference list; GEUS publications are also featured on the Survey's homepage [www.geus.dk](http://www.geus.dk).

## The geological publications in English: status

The six publications dealt with in this report fall into three groups (summarised in Table 1):

1. The scientific series (in English)
2. Open file-type reports (in English or Danish)
3. Newsletters to industry (in English)

As a guide to the publication reorganisation DGU+GGU=GEUS, and as a help to readers previously conversant with the publications of the former DGU and GGU, reference to these past series is also made in Table 1.

### 1. The scientific series (Plate 1)

Scientific results are published in two geographically-oriented bulletin series: results concerning Denmark and the Faeroe Islands and the relationships to Europe and adjoining parts of the North Atlantic region, are collected in one series (*Geology of Denmark Survey Bulletin*), while those pertaining to Greenland and the relationships to North America and to the Arctic in general are reported in another (*Geology of Greenland Survey Bulletin*). This arrangement allows for the continuation of one scientific line of both DGU and GGU and is thus practical for libraries and customers. Thus, *Geology of Denmark Survey Bulletin* continues the numbering of the leading scientific series of the former DGU (*Danmarks Geologiske Undersøgelse Serie A*) while the *Geology of Greenland Survey Bulletin* takes over



the numbering of the GGU's bulletin series (*Bulletin Grønlands Geologiske Undersøgelse*) (see Table 1).

Apart from maps that will continue to be released as illustrative material in the two bulletin series printed geological map sheets from all regions of the Kingdom of Denmark will be released in a single map series – *Geology of Denmark and Greenland Map Series*. This series comprises all types of printed geoscience maps at various scales that depict the onshore and offshore parts of Denmark, Greenland and the Faeroe Islands, and adjacent international waters. The maps will be issued with a short map description.

It is apparent from the above that the name of the Survey does not appear in the title of the three publications that comprise the Survey's scientific series, viz. *Geology of Denmark Survey Bulletin*, *Geology of Greenland Survey Bulletin* and *Geology of Denmark and Greenland Map Series*. This signals the intention, and opens the possibility, to publish other than strictly Survey results in these series.

## 2. Open file-type reports (Plate 2)

An important role of a geological survey is to ensure that general and specific information relevant to society, including field and laboratory observations and analytical data, are readily available to the public. This is often achieved through 'open file' or 'data' reports of one type or another produced in limited numbers. The former DGU and GGU each issued such reports, some being parts of numbered series (e.g. DGU's *Service, Datadokumentation* and *Internal* reports or GGU's *Open File Series*), other issues being termed 'internal', 'industry', 'special' or 'inspection' reports.

All reports of this type produced by GEUS are placed in one series, viz. *Danmarks og Grønlands Geologiske Undersøgelse Rapport*. The reports, in English or Danish, are edited departmentally. In the first year (1996), 121 reports were released; in 1997 this number will be exceeded. The series has a wide subject range, including non-geological topics, and it also contains classified issues. The reports present data from all regions of the Kingdom of Denmark, as well as from other countries where GEUS staff have worked on contract. The classified category of reports includes those commissioned by industry and other customers, besides service and inspection reports prepared for ministerial use. Some confidential reports are released to the public when the date of confidentiality expires.

It should be noted that the reports making up *Danmarks og Grønlands Geologiske Undersøgelse Rapport* series, although consecutively numbered, are not all available to libraries and the public in general, i.e. some reports are permanently confidential. Another point to note is that the reports of the *Rapport* series of the new Survey – *Danmarks og Grønlands Geologiske Undersøgelse* – should not be mistaken for the *Rapport* series of the former *Geological Survey of Greenland (Rapport Grønlands Geologiske Undersøgelse)* that was discontinued in 1995. That series, which contained refereed short scientific articles and current research papers, has been incorporated in the *Geology of Greenland Survey Bulletin* series (see Table 1).

### **3. Newsletters to industry (Plate 2)**

The newsletters *Greenland MINEX News* and *GHEXIS*, designed respectively for the international mining and oil industries, continue to be specifically related to Greenland and they are published in unaltered format under GEUS auspices. Both newsletters are compiled from data and interpretations in Survey files, but they are open for input of relevant information from external sources, including new interpretations of Greenland geology that have direct relevance to the mining and oil industries. A list of the issues so far produced, with the titles of leading articles, is given in the *Catalogue of Greenland publications and data* (GEUS 1997).

Table 1. Register of geological publications in English available from GEUS

Name	Status	Type
<b>1. Scientific series</b>	External review; central editing.	External offset printing.
<i>Geology of Greenland Survey Bulletin.</i> (New)	Continuation of <i>Bulletin Grønlands Geologiske Undersøgelse</i> , and incorporating <i>Rapport Grønlands Geologiske Undersøgelse</i> . Starts with no. 173.	Scientific, internationally-refereed articles in English on research pertaining to Greenland and the relationships to the North Atlantic and Arctic regions. Note that one annual volume – <i>Review of Greenland Activities</i> – is an atypical issue of this series, in that by its nature it is not subjected to the international reviewing requirements otherwise applied to the series.
<i>Geology of Denmark Survey Bulletin.</i> (New)	Continuation of <i>Danmarks Geologiske Undersøgelse Serie A</i> , and incorporating <i>Danmarks Geologiske Undersøgelse Serie B</i> . Starts with no. 36.	Scientific, internationally-refereed articles in English on research relating to Denmark and the Faeroe Islands, and the relationships to surrounding regions.
<i>Geology of Denmark and Greenland Map Series.</i> (New)	Incorporates <i>Grønlands Geologiske Undersøgelse Map, Descriptive texts</i> for 1:500 000 and 1:100 000 maps of the Greenland map sheet coverage and <i>Danmarks Geologiske Undersøgelse Map Series</i> . Starts with no. 1.	All types of geoscientific maps of Greenland, Denmark and the Faeroe Islands, including offshore areas; issued with short refereed descriptive texts.
<b>2. Open file-type reports</b>	Departmental review and editing.	In-house photo-reproduction.
<i>Danmarks og Grønlands Geologiske Undersøgelse Rapport.</i> (New)	Incorporates <i>Open File Series Grønlands Geologiske Undersøgelse</i> , some aspects of <i>Thematic Map Series</i> and internal and service GGU reports, including field and express reports, inspection reports and special reports to industry; and <i>Danmarks Geologiske Undersøgelse Serie C</i> and <i>D</i> , and DGU's <i>Service, Internal and Datadocumentation reports</i> , as well as <i>Well data summary sheets</i> . Started in 1996; consecutive numbering within each year. In 1996, reports 1996/1 to 1996/121 were issued, of which 68 were classified; of the 121 reports, 20 deal with Greenland-related topics.	Cosmopolitan, multi-disciplinary reports in English or Danish, produced in limited numbers by photocopy technique. The series includes confidential (classified) reports, some of which are released when confidentially expires.
<b>3. Newsletters to industry</b>	Departmental review and editing.	External photo-reproduction.
<i>Greenland MINEX News</i>	Unchanged since its start in 1992. Continuous numbering; most recent issue is no. 13 from November, 1997. Editorial responsibility is with the Department of Economic Geology. Available free on request.	The name <i>Greenland MINEX News</i> is derived from Greenland <b>M</b> ineral <b>E</b> xploration <b>N</b> ews- <b>l</b> etter. It brings up-to-date geological and regulatory information on Greenland to the international exploration and mining industry. The newsletter is published by GEUS jointly with the Mineral Resources Administration for Greenland.
<i>GHEXIS</i>	Unchanged since its start in 1990. Continuous numbering; most recent issue is no.12 from October, 1997. Unnumbered information packages are also issued under the GHEXIS name and design. Editorial responsibility is with the Department of Stratigraphy. Available free on request.	The name <i>GHEXIS</i> is an acronym for Greenland <b>H</b> ydrocarbon <b>E</b> xploration <b>S</b> ervice. It brings up-to-date geological and regulatory information on Greenland to the international oil and gas industry. The newsletter is published by GEUS in cooperation with the Mineral Resources Administration for Greenland.

## Editing and production responsibilities

The editing and production responsibilities of publications at GEUS are decentralised, and the six geological series dealt with in this report involve both central and departmental refereeing, editing and production (see Table 1).

The production of the three internationally-reviewed scientific series, viz. *Geology of Denmark Survey Bulletin*, *Geology of Greenland Survey Bulletin* and *Geology of Denmark and Greenland Map Series*, is the responsibility of a central publications committee (see below). The responsibility for production of the open file-type reports (*Danmarks og Grønlands Geologiske Undersøgelse Rapport*) and newsletters to industry (*Greenland MINEX News* and *GHEXIS*) lies in the departments.

### Publications Committee

<i>Chief editor:</i>	Peter R. Dawes	phone: 38142201	e-mail: prd@geus.dk
<i>Scientific editors:</i>	Niels Henriksen	phone: 38142250	e-mail: nh@geus.dk
	Ib Marcussen	phone: 38142560	e-mail: im@geus.dk
	Svend Stouge	phone: 38142222	e-mail: ss@geus.dk
	W. Stuart Watt	phone: 38142270	e-mail: wsw@geus.dk
<i>Editorial secretary:</i>	Esben W. Glendal	phone: 38142202	e-mail ewg@geus.dk

### Manuscripts for the GEUS scientific series

Manuscripts intended for publication in the three scientific series should be addressed to the chief editor or the editorial secretary. Manuscripts must be accompanied by two forms, viz. *Authors' check list* and *Declaration form*, see appendix to this report. The manuscripts will be assessed in-house and forwarded to external specialists for peer review. For details of production, see under systematic descriptions (pp. 17–24).

### Manuscripts intended for international journals

The Survey encourages publication of scientific results of its projects in international journals. It should be noted that all manuscripts based on GEUS projects or material must be submitted to Copenhagen (chief editor/editorial secretary) for approval *prior* to submission to an international outlet. Papers *must* carry a statement that publication is authorised by the Geological Survey of Denmark and Greenland. Comments, with a 'permission to publish' notification, are returned to authors within days.

## Sale and availability of Survey publications

Queries about sale and availability of the six publication series described in this report (as well as other Survey publications) should be addressed to Survey headquarters in Copenhagen.

Some information on the availability of each series is given in the following systematic descriptions under the sub-heading 'Print-run and distribution'. The two newsletters to industry – *Greenland MINEX News* and *GHEXIS* – and some reports in the open file-type series – *Danmarks og Grønlands Geologiske Undersøgelse Rapport* – are available free of charge (please contact the Survey).

The three scientific issues – *Geology of Denmark Survey Bulletin*, *Geology of Greenland Survey Bulletin* and *Geology of Denmark and Greenland Map Series* – can be purchased from our agent Geografforlaget ApS; all Greenland publications, including the Greenland scientific series, can be obtained direct from the Survey in Copenhagen.

### For the scientific series

Geografforlaget ApS  
Frøerhøjvej 43  
DK-5464 Brenderup  
Denmark  
Phone: +45 63 44 16 83  
Fax: +45 63 44 16 97  
E-mail: [go@geografforlaget.dk](mailto:go@geografforlaget.dk)

### For all Greenland publications

Publication Sales  
Att.: Solvejg Halager  
Geological Survey of Denmark  
and Greenland  
Thoravej 8  
DK-2400 Copenhagen NV  
Denmark  
Phone: +45 38 14 20 00, fax: +45 38 14 20 50  
E-mail: [shj@geus.dk](mailto:shj@geus.dk)

The three scientific series are also available on an exchange basis. Libraries and institutions seeking exchange arrangements should contact the Librarian at the Thoravej address: e-mail [kkaa@geus.dk](mailto:kkaa@geus.dk).

For the full range of Survey publications, including the official annual reports that can be requested free of charge, please contact the Survey in Copenhagen.

## **SYSTEMATIC DESCRIPTION**

### **1. The scientific series**

1.1 *Geology of Denmark Survey Bulletin*

1.2 *Geology of Greenland Survey Bulletin*

1.3 *Geology of Denmark and Greenland Map Series*

### **2. Open file-type reports**

2.1 *Danmarks og Grønlands Geologiske Undersøgelse Rapport*

### **3. Newsletters to industry**

3.1 *Greenland MINEX News*

3.2 *GHEXIS*





## 1.1 *Geology of Denmark Survey Bulletin*

### **Type**

Scientific, internationally reviewed papers based on research results from Denmark, the Faeroe Islands and offshore areas, as well as comparable conditions in, or relationships to, neighbouring countries.

### **Contents**

Monographs and memoir-type papers on specific topics, review papers and short 'current research' articles. A volume may contain one or more papers dealing with a specific topic or geographic area (e.g. palaeontology or Bornholm) or a symposium volume or *ad hoc* collections determined by the editors.

### **Language**

English.

### **Format and cover**

28 × 21 cm. Standard cover design in two shades of blue with varying photographic or graphic illustrations. A front cover mock-up with a graphic design is shown in Plate 1. Authors submitting manuscripts are encouraged to suggest an appropriate cover illustration.

### **Lay-out**

Main text in 2 columns with even right-hand margin. Width of illustrations: 1 (82 mm), 1½ (112 mm) og 2 (171 mm) columns. Plates: full page. Height of column: 232 mm.

### **Publication frequency**

At regular intervals.

### **Submission of manuscripts and assessment**

Manuscripts by GEUS staff and external co-workers involved in GEUS projects must be approved by the head of the relevant department and/or leader of the scientific project; use the standard *Declaration form*. Complete manuscripts with all illustrations, *Authors' check list and Declaration form* should be submitted to the editorial office (chief editor or editorial secretary) for registration. The scientific editor (see under 'Editorial staff') informs the (first) author of the assessment and about any revision of the manuscript.

### **External refereeing**

Peer review is by two referees appointed by the scientific editor; at least one referee (but usually both) will be external. Extra assessments can be requested. The scientific editor will forward the referee assessments and other comments to the (first) author. These must

be taken into consideration when revising the manuscript; resubmitted manuscripts *must be* accompanied by a clear statement giving the author's attitude to the suggestions, and how these have been incorporated into the manuscript. Suggestions that have not been accepted, neither wholly nor in part, must be clearly indicated.

### **Technical production and printing**

In-house desk-top publishing and external offset printing, or external production of the entire publication. Proofs will be sent to the (first) author. Production time is aimed to be under 3 months after final approval of the manuscript.

### **Print-run and distribution**

Normal print-run is up to 1000 but can be larger for special volumes. Exchange is through GEUS' library; sale is through Geografforlaget ApS.

### **Reprints**

General rule for monograph volumes: 1 or 2 authors: 50 free copies;  
3 or more authors of a volume: 75 free copies;  
Volumes containing several articles: as per arrangement.

### **Numbering**

Consecutively, starting with no. 36, i.e. a continuation of the numbering of *Danmarks Geologiske Undersøgelse Serie A*. In addition, ISBN and ISSN numbering.

### **Citation and abbreviation**

In *all* GEUS publications the series must be cited in full, i.e. *Geology of Denmark Survey Bulletin*. The full name is also the recommended form for international citation; however, if abbreviation is required the following is suggested: *Geology Denmark Surv. Bull.*

### **Editorial staff**

Chief editor Peter R. Dawes, scientific editor Svend Stouge and editorial secretary Esben W. Glendal. *Ad hoc* scientific editors may be appointed for special volumes. Guidelines for *ad hoc* editors of GEUS scientific publications can be requested from the editorial secretary.

### **Special comments**

*Geology of Greenland Survey Bulletin* is a continuation of *Danmarks Geologiske Undersøgelse Serie A* and incorporates *Danmarks Geologiske Undersøgelse Serie B*, as well as other 'special' publications.

## 1.2 *Geology of Greenland Survey Bulletin*

### **Type**

Scientific, internationally reviewed papers based on research results from Greenland and off-shore areas, as well as comparable conditions in, or relationships to, the North Atlantic and Arctic.

### **Contents**

Monographs and memoir-type papers on specific topics, review papers and short 'current research' articles. A volume may contain one or more papers dealing with a specific topic or geographic area, e.g. palaeontology or North-East Greenland. It may also consist of a collection of short articles with varying contents determined by the editors. For the annual *Review of Greenland Activities*: see under 'Special comments' below.

### **Language**

English.

### **Format and cover**

28 × 21 cm. Standard cover design in two shades of red with varying photographic or graphic illustrations. The front cover of *Geology of Greenland Survey Bulletin* 173 is shown in Plate 1. Authors submitting manuscripts are encouraged to suggest an appropriate cover illustration.

### **Lay-out**

Main text in 2 columns with even right-hand margin. Width of illustrations: 1 (82 mm), 1½ (112 mm) og 2 (171 mm) columns. Plates: full page. Height of column: 232 mm.

### **Publication frequency**

At regular intervals. A special volume – *Review of Greenland Activities* – is issued once a year.

### **Submission of manuscripts and assessment**

Manuscripts by GEUS staff and external co-workers involved in GEUS projects must be approved by the head of the relevant department and/or the leader of the scientific project; use the standard *Declaration form*. Complete manuscripts with all illustrations, *Authors' check list* and *Declaration form* should be submitted to the editorial office (chief editor or editorial secretary) for registration. The scientific editor (see under 'Editorial staff') informs the (first) author of the assessment and about any revision of the manuscript.

## **External refereeing**

Peer review will be by two referees appointed by the scientific editor; at least one referee (but usually both) will be external. Extra assessments can be requested. The scientific editor will forward the referee assessments and other comments to the (first) author. These must be taken into consideration when revising the manuscript; resubmitted manuscripts *must be* accompanied by a clear statement giving the author's attitude to the suggestions, and how these have been incorporated into the manuscript. Suggestions that have not been accepted, neither wholly nor in part, must be clearly indicated. Special instructions apply to *Review of Greenland Activities* – see below.

## **Technical production and printing**

In-house desk-top publishing and external offset printing, or external production of the entire publication. Proofs will be sent to the (first) author. Production time is aimed to be under 3 months after final approval of the manuscript.

## **Print-run and distribution**

Normal print-run is up to 1000 but can be larger for special volumes. Exchange is through GEUS' library; sale is through Geografforlaget ApS and direct from GEUS.

## **Reprints**

General rule for monograph volumes: 1 or 2 authors: 50 free copies;

3 or more authors of a volume: 75 free copies;

Volumes containing several articles: as per arrangement.

## **Numbering**

Consecutively, starting with no. 173, i.e. a continuation of the numbering of *Bulletin Grønlands Geologiske Undersøgelse*. In addition, ISBN and ISSN numbering.

## **Citation and abbreviation**

In *all* GEUS publications the series must be cited in full, i.e. *Geology of Greenland Survey Bulletin*. The full name is also the recommended form for international citation; however, if abbreviation is required, the following is suggested: *Geology Greenland Surv. Bull.*

## **Editorial staff**

Chief editor Peter R. Dawes, scientific editor W. Stuart Watt and editorial secretary Esben W. Glendal. *Ad hoc* scientific editors may be appointed for special volumes. Guidelines for *ad hoc* editors of GEUS scientific publications can be requested from the editorial secretary.

### **Special comments**

*Geology of Greenland Survey Bulletin* is a continuation of *Bulletin Grønlands Geologiske Undersøgelse* and incorporates *Rapport Grønlands Geologiske Undersøgelse*.

The annual *Review of Greenland Activities* (RoGA) is a special bulletin. It contains review articles on primary activities written in a style that enables other than professionals to get an all-round impression of research in Greenland and why it is being carried out. The articles are checked by at least two referees who are not necessarily external. Hence *Review of Greenland Activities* is *not* representative of the series as such. The scientific editors of RoGA for 1996 were A. K. Higgins and Jon R. Ineson; for the 1997 issue, scientific editors are W. Stuart Watt and A. K. Higgins. Special instructions for submission of contributions apply. Contact the editorial secretary.



### 1.3 Geology of Denmark and Greenland Map Series

#### **Type**

Printed geoscientific maps of Denmark, the Faeroe Islands and Greenland including off-shore areas, with short descriptions.

#### **Contents**

*Map:* one or more maps on the same scale. All geoscientific types from standard and special map sheets of lithological and stratigraphical units to thematic maps and base data maps, as well as geophysical, geochemical, geomorphological, glaciological, hydro-geological maps, etc.

*Description:* limited to a maximum of 16 pages; should be considered an extended legend.

#### **Language**

*Map legend:* Denmark/Faeroe Islands maps, English/Danish; Greenland maps, English.

*Description:* Denmark/Faeroe Islands maps, English/Danish; Greenland maps, English.

If relevant, map summaries in other languages may be added.

#### **Format and cover**

*Map:* variable according to purpose, usually up to 80 × 120 cm, but width can be up to 96 cm.

*Cover:* A4. Standard cover design in two shades of green with varying illustrations. A front cover mock-up with map facsimile, is shown in Plate 1.

#### **Lay-out**

*Map:* differing lay-out, to achieve compatibility with any published maps in the national map series initiated and previously produced by the former DGU and GGU.

*Description:* main text in 2 columns with even right-hand margin. Width of illustrations: 1 (82 mm), 1½ (112 mm) og 2 (171 mm) columns. Height of column: 235 mm.

#### **Publication frequency**

As required.

#### **Submission and assessment**

*Map:* compilation and design of maps must involve the head of the relevant department and the leader of the scientific project; the scientific editor (see under 'Editorial staff') should also be contacted at an early stage in the compilation (see also 'Special comments'). The department head is responsible for the scientific standard of the map(s); the editor ensures that GEUS' editorial line is adhered to, including format, title, colours, legend and other explanatory signatures. No map should be made ready of printing without consultation with the editorial staff.

*Description:* manuscripts must be approved by the head of the relevant department and project leader; use the standard *Declaration form*. Complete manuscripts with all illustrations, *Authors' check list* and *Declaration form* should be submitted to the editorial office (chief editor or editorial secretary) for registration. The appointed scientific editor informs the (first) author of the assessment and about any revision of the manuscript.

### **External refereeing**

*Map:* at least one written assessment of the scientific contents of the manuscript map from an external referee will be procured by the (first) author's head of department or by the project leader. The assessment must be forwarded to the scientific editor.

*Description:* at least one peer review of the manuscript by an external referee is arranged by the scientific editor; the manuscript is sent to the referee with a printed version of the map or a prime quality colour copy of the manuscript map.

### **Technical production and printing**

*Map:* in-house or externally, depending on type.

*Cover and description:* in-house desk-top publishing and external offset printing. Production time is aimed to be under 2 months after receipt of approved manuscript and printed map.

### **Distribution**

Normal print-run is up to 1000 but can be larger for special issues. Exchange is through the GEUS' library; sale is through Geografforlaget ApS and direct from GEUS.

### **Reprints**

General rule: 1 or 2 authors: 25 free copies;  
3 or more authors: 40 free copies.

### **Numbering**

Consecutively, starting with no. 1. A map may be part of a systematic regional coverage (e.g. Geological map of Greenland, 1:500 000); if so it will also carry an index serial number. In addition, ISBN og ISSN numbering.

### **Citation and abbreviation**

In all GEUS publications the series must be cited in full, i.e. *Geology of Denmark and Greenland Map Series*. The full name is also the recommended form for international citation; however, if abbreviation is required, the following is suggested: *Geology Denmark Greenland Map Series*.

### **Editorial staff**

Chief editor Peter R. Dawes, scientific editor Ib Marcussen (Denmark and the Faeroes), scientific editor Niels Henriksen (Greenland) and editorial secretary Esben W. Glendal.

### **Special comments**

Some maps to be issued in the *Geology of Denmark and Greenland Map Series* are integral parts of pre-existing map sets previously published by DGU and GGU (see above under 'Numbering'). It is paramount that compilers of maps make early contact with the relevant department head and project leader, as well as with the relevant editorial staff (see above under 'Submission and assessment').

## 2.1 *Danmarks og Grønlands Geologiske Undersøgelse Rapport*

### **Type**

Open file-type reports: diverse, unrefereed reports produced in limited numbers that can also describe geoscientific conditions in countries outside the Kingdom of Denmark. The reports may be confidential, either for a period or permanently.

### **Contents**

There are four main categories of reports.

- a) Geoscientific reports requiring early publication (e.g. for industry), the contents of which are at a research level not qualifying for publication in the bulletin series or in international journals. These reports are of a general or specific interest and can contain geological assessments and interpretations.
- b) Data documentation reports presented as lists or supplements presenting geoscientific and other data, data banks, drill cores, analytical procedures, computer systems, software, etc.
- c) Customer reports and ministerial inspection and consultancy reports. To protect customers or to comply with legislative demands the contents of such reports may be confidential. The period of confidentiality may be limited.
- d) Non-scientific reports aimed at the general reader, and the staff and co-workers of the Survey, viz. publication catalogues, guidelines and procedures, e.g. the present report.

### **Language**

English or Danish.

### **Format and cover**

A4. Standard cover design in blue and beige colours. Reports on Greenland and confidential reports carry additional markings (see Plate 2).

### **Lay-out**

Manuscripts are produced after a GEUS-macro and instructions (see Katz 1997; see also below under 'Special comments'). Printed cover and title page are produced in-house c/o *Geological Information and Data Centre*, attention Marianne Mie Hansen.

### **Publication frequency**

Frequently; 100 or more annually.

### **Submission of manuscripts and assessment**

Manuscripts must be presented to the head of the relevant scientific department or project leader. The former is responsible for ensuring scientific and bibliographic standards, that

technical editing and typography follow Katz (1997), and that the two obligatory forms (*Rekvisitionsskema* and *Ekspeditionsskema*) are completed, including statements on assessment and confidentiality. Both forms – that can be requested from the *Geological Information and Data Centre* (Marianne Mie Hansen) and departmental secretaries – must be signed by the head of department or his/her deputy or proxy.

For special reports in category a) (see above) that aim at ISBN status, a complete manuscript with all figures must be submitted to the *Publications Committee* (chief editor, see p. 13).

### **External refereeing**

Not required.

### **Technical production and printing**

In-house printing (photocopying) and binding. The number of illustrations to be colour-photocopied should not exceed 15%. The entire production process takes about 10 working days after submission of the two obligatory forms and complete manuscript and illustrations.

### **Reprinting, and storage of original and stock copies**

All original material, including that of the confidential reports, as well as stock copies, are retained by the *Geological Information and Data Centre*. Contact this centre for reprint procedure, c/o Marianne Mie Hansen.

### **Print-run and distribution**

Print-run is variable; decided report for report by head of department. Normal print-run for non-confidential reports is below 75, often less than 50. Reprinting facility is available. Distribution, both internal and external, is carried out by the *Geological Information and Data Centre* through arrangement with the departments. Reports that are priced can be purchased direct from GEUS.

### **Author copies**

Numbers available to authors are decided departmentally.

### **Numbering**

Consecutively within the calendar year in which they are issued; the first number was 1996/1.

### **Citation and abbreviation**

In all GEUS publications the series must be cited in full, i.e. *Danmarks og Grønlands Geologiske Undersøgelse Rapport*. If abbreviation is required, e.g. in international journals, the following is recommended: *Danmarks Grønlands Geol. Unders. Rapp.*

**Editorial staff**

*Text and illustrations:* department heads and secretaries.

*Cover and title page:* Geological Information and Data Centre, c/o Marianne Mie Hansen.

**Special comments**

One report in this series – *Danmarks og Grønlands Geologiske Undersøgelse Rapport 1997/64* – outlines the typography and lay-out of the series (Katz 1997). Copies of this report (in Danish) can be requested from the Survey. However, it should be noted that the style of references outlined in Katz (1997) should not be used; authors should refer to the standard bibliographic style described in Sønderholm *et al.* (1997).



### 3.1 Greenland MINEX News

**Type**

A newsletter to the international mining industry with up-to-date geoscientific and legislative information about Greenland.

**Contents**

A wide range of information of interest to prospectors and the exploration and mining industry in general, including expeditionary news, geoscientific data and assessments, recent literature, and licence and regulatory information. Standard issues: maximum 12 pages.

**Language**

English.

**Format and cover**

A4. No cover; page 1 displays the head of the newsletter in grey and red colours. The front page of a recent issue is shown in Plate 2.

**Lay-out**

Two columns with black and white illustrations in all sizes.

**Publication frequency**

As required, usually twice a year.

**Internal assessment**

The main text (*Geological and exploration brief*) is compiled by the MINEX editorial staff, critically read in the Department of Economic Geology and approved by the head of the department.

**External refereeing**

No formal external refereeing, but as a rule drafts of the main geological articles are sent to Canada for reading and assessment.

**Technical production**

In-house desk-top publishing and external photocopying on pre-printed paper. Quick technical production within a week; stapled or tape-bound.

### **Print-run and distribution**

Normal print-run is 1500; larger for special numbers. Freely available. Copies are sent to approximately 800 recipients on special mailing lists, primarily in North America. Also handed out at meetings, conferences, exhibitions etc.

### **Reprints**

Employees and others can receive a number of pre-arranged free copies.

### **Numbering**

Consecutively. Started in June 1992 with No. 1. ISSN numbering.

### **Citation and abbreviation**

It is recommend that the newsletter is cited in the literature and reference lists in the following form: *Greenland MINEX News* (see Sønderholm *et al.* 1997).

### **Editorial staff**

Peter R. Dawes (*Geological and exploration briefs*) and Henrik Højmark Thomsen (illustrations and general lay-out). The section *Regulatory & licensing information* is compiled by the Mineral Resources Administration for Greenland (Råstofforvaltningen for Grønland).

### **Special comments**

MINEX is an acronym for Greenland **M**ineral **E**xploration Newsletter. The newsletter is published by GEUS in co-operation with Råstofforvaltningen for Grønland (Mineral Resources Administration for Greenland).

Although the main geological section in *Greenland MINEX News – Geological and exploration briefs* – is compiled from data and interpretations in Survey files, the newsletter is open for input of relevant information from external sources and by others, including new data and interpretations of Greenland geology that have direct relevance to the mining industry.

## 3.2 GHEXIS

### **Type**

A newsletter to the international oil and gas industry with up-to-date geological and legislative information about Greenland and its offshore areas.

### **Contents**

A wide range of information of interest to the oil and gas industry including expeditionary news, geological-geophysical data and assessments, new publications, and licence and regulatory conditions. Standard issues: maximum 12 pages.

### **Language**

English.

### **Format and cover**

A4. No cover; page 1 displays the head of the newsletter in grey and red colours. The front page of a recent issue is shown in Plate 2.

### **Lay-out**

Full page text with black/white and colour illustrations in all sizes.

### **Publication frequency**

As required, usually twice a year.

### **Internal assessment**

Authored by the GHEXIS editorial staff, critically read in the relevant scientific departments and approved by the head of the Department of Stratigraphy.

### **External refereeing**

No formal external reviewing.

### **Technical production**

In-house desk-top publishing and internal or external photocopying on pre-printed paper. Quick technical production within a week; depending on type of illustrative material, either stapled or tape bound.

### **Print-run and distribution**

Normal print-run is up to 1000, larger for special numbers. Freely available. Copies are sent to approximately 500 recipients on special mailing lists. Also handed out at meetings, conferences, exhibitions etc.

## **Reprints**

Employees and others can receive a number of pre-arranged free copies.

## **Numbering**

Consecutively. Started in November 1990 with No. 1. ISSN numbering.

## **Citation and abbreviation**

It is recommended that the newsletter is cited in the literature and reference lists in the following way: *GHEXIS Newsletter* (see Søndersholm *et al.* 1997). In cases where the publisher needs to be mentioned, the full name of the Survey should be given: Geological Survey of Denmark and Greenland. If abbreviation is needed, the following form is recommended: Geol. Surv. Denmark Greenland.

## **Editorial staff**

Within the Department of Stratigraphy (see above under 'Internal assessment').

## **Special comments**

GHEXIS is an acronym for **G**reenland **H**ydrocarbon **E**xploration **I**nformation **S**ervice. From early 1990 to January 1996 (inclusive of No. 10) GHEXIS was authored and edited by T. C. R. Pulvertaft. The newsletter is issued in co-operation with Mineral Resources Administration for Greenland (Råstofforvaltningen for Grønland).



## PLATES

### **Plate 1.** The scientific series

- 1.1 *Geology of Denmark Survey Bulletin* (mock-up)
- 1.2 *Geology of Greenland Survey Bulletin* (facsimile)
- 1.3 *Geology of Denmark and Greenland Map Series* (mock-up)

### **Plate 2.** Open file-type reports and newsletters to industry

- 2.1 *Danmarks og Grønlands Geologiske Undersøgelse Rapport* (facsimiles)
- 3.1 *Greenland MINEX News* (facsimile)
- 3.2 *GHEXIS* (facsimile)



# I. The scientific series

1.1 *Geology of Denmark Survey Bulletin*

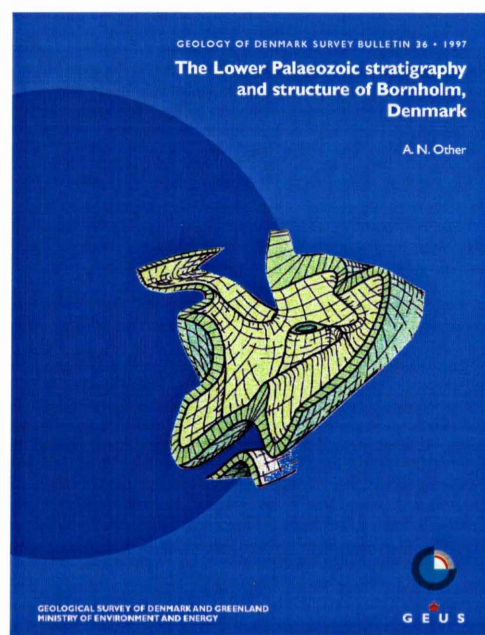
1.2 *Geology of Greenland Survey Bulletin*

1.3 *Geology of Denmark and Greenland Map Series*

*Geology of Denmark Survey Bulletin*  
(mock-up)

Format 21 x 28 cm

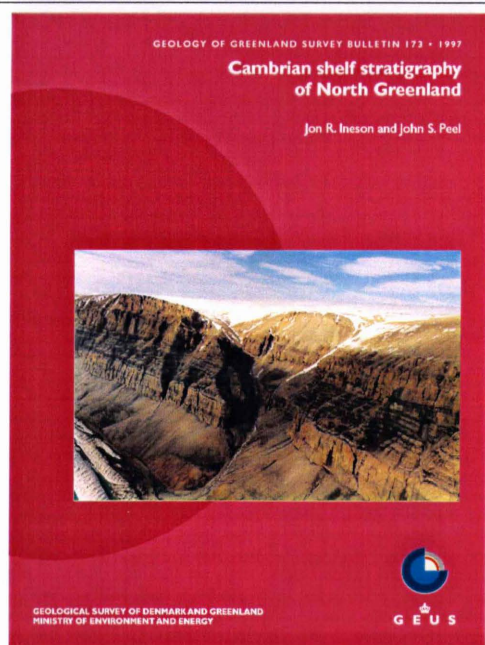
1.1



*Geology of Greenland Survey Bulletin 173 • 1997*

Format 21 x 28 cm

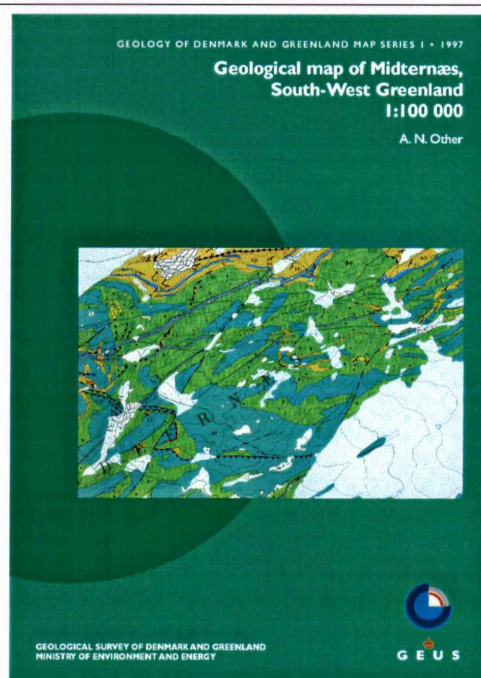
1.2



*Geology of Denmark and Greenland Map Series*  
(mock-up)

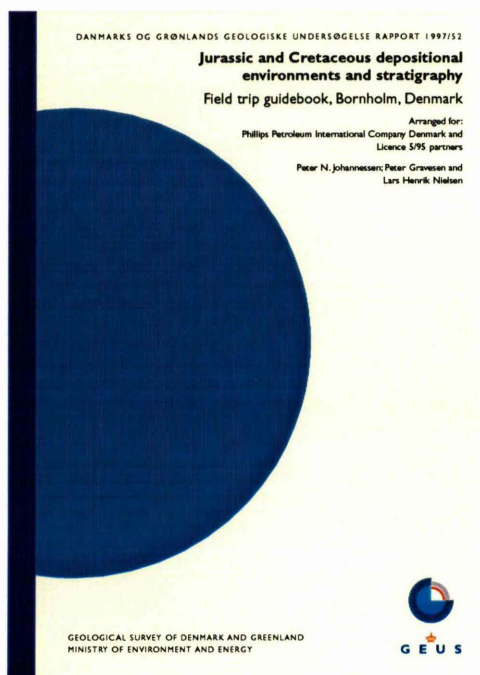
Format A4

1.3

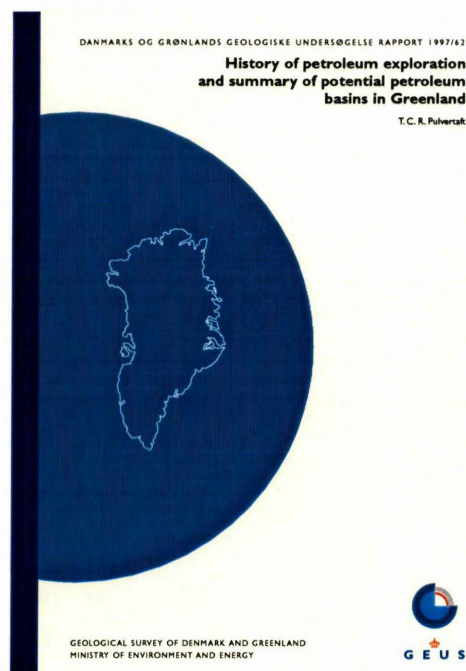


## 2. Open file-type reports

### 2.1 Danmarks og Grønlands Geologiske Undersøgelse Rapport



Rapport 1997/52 (Denmark)



Rapport 1997/62 (Greenland)

## 3. Newsletters to industry

### 3.1 Greenland MINEX News

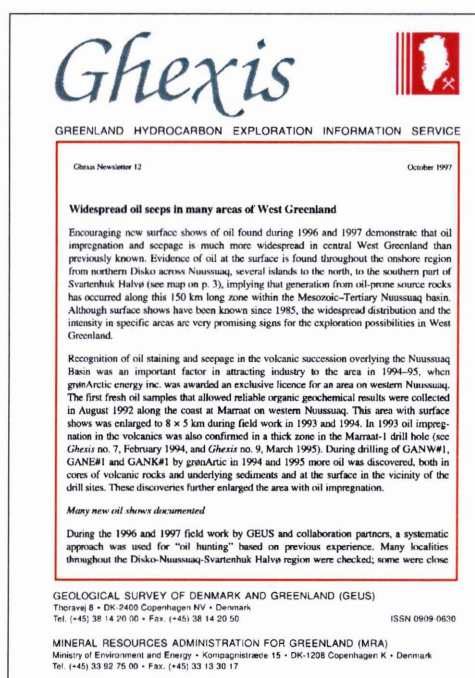
### 3.2 GHEXIS

3.1



No. 12, July 1997

3.2



No. 12, October 1997

## **APPENDIX**

1. *Authors' check list*
2. *Declaration form*

Danmarks og Grønlands Geologiske Undersøgelse (GEUS)  
*The Geological Survey of Denmark and Greenland*

**Authors' check list**

To accompany manuscripts submitted to the scientific series: *Geology of Denmark Survey Bulletin*,  
*Geology of Greenland Survey Bulletin* and *Geology of Denmark and Greenland Map Series*

**Series:** \_\_\_\_\_

**Title:** \_\_\_\_\_  
\_\_\_\_\_

**Author(s):** \_\_\_\_\_

**Manuscript**

Title page with address(es)

Keywords

Abstract (max. 1 page: 460 words)

Contents list (if relevant)

Complete text (no. of pages? )

References in GEUS format

Figure captions

Appendices (optional)

1.5 line spacing

Pages numbered at top

Text flush left, ragged right

Scale on relevant illustrations

All illustrations with stated data source

**Photographs**

Complete original set supplied

2 complete copy-sets supplied

No. of prints

No. of slides

**Tables**

Each with full title and numbered

Source(s) to data given

Tabs, no hard spaces

**Line drawings**

All originals supplied

2 complete copy-sets supplied

No. of hand-drawn line drawings

No. of computer drawings

Disk supplied and matches paper copies

**Word processing disk**

Supplied

Disk matches print-out of manuscript

Name and version of programme:

Danmarks og Grønlands Geologiske Undersøgelse (GEUS)  
*The Geological Survey of Denmark and Greenland*

**Declaration form**

To accompany manuscripts submitted to the scientific series: *Geology of Denmark Survey Bulletin*, *Geology of Greenland Survey Bulletin* and *Geology of Denmark and Greenland Map Series*

**Series:** \_\_\_\_\_

**Title:** \_\_\_\_\_  
\_\_\_\_\_

**Author(s):** \_\_\_\_\_

**Author declaration**

Have any of the illustrations/photographs/tables been published previously, in internal or external publications, either wholly, in part or in modified form? Yes ☐ no ☐ . If yes, state figure/table numbers:

Previous sources must be clearly stated in the appropriate captions. Are they?

Permission to use copyright material (from all other sources than GEUS publications) is the authors' responsibility.

I declare that the contents of this paper are agreed on by all the authors.

\_\_\_\_\_  
First author

\_\_\_\_\_  
Date

**Leader declaration**

I declare that this manuscript is suitable for publication with the changes that the editors might find necessary to meet the standard of the GEUS scientific series. It does not contain confidential or classified information and all data sources are referenced adequately.

\_\_\_\_\_  
Department leader

or

\_\_\_\_\_  
Project/programme leader

\_\_\_\_\_  
Date