

# Cameroon Fieldwork 2011

## Rutile in placer deposits and potential hard rock sources

Martin Mehlsen, Christian Knudsen, Feiko Kalsbeek, Joseph Penaye,  
Kankeu Boniface, Jean Marc Ngene, Simon Mbola & Urbain Njel

Revised edition



# Cameroon Fieldwork 2011

## Rutile in placer deposits and potential hard rock sources

Martin Mehlsen, Christian Knudsen, Feiko Kalsbeek, Joseph Penaye,  
Kankeu Boniface, Jean Marc Ngene, Simon Mbola & Urbain Njel

Revised edition

Released 30.11.2016

## Sampling methods

For the purpose of future studies, on this field expedition two types of samples were collected, rock hand specimens and soil sediment samples.

For sampling soil sediments three methods were used. In the eastern and north eastern part of the area, samples 5190XX, samples were dug from streams; samples were weighed and then panned to concentrate the heavy minerals, then labelled, weighed and packed for shipping.



Jean Marc Ngene panning a sample. Photo: Martin Mehlsen

The samples collected in the western and south western area, samples 5175XX, were drilled by two methods, with the purpose of retrieving sediments, the method used were decided upon from as a result of the grain size in the sub strait. Part of the samples were drilled by a motorized drill, this was primarily when the sediment was sand or gravel. The motor used was originally intended for drilling holes for fence posts, with a rig for retrieving the drill. The samples were weighed, panned, labelled and packed for shipment.



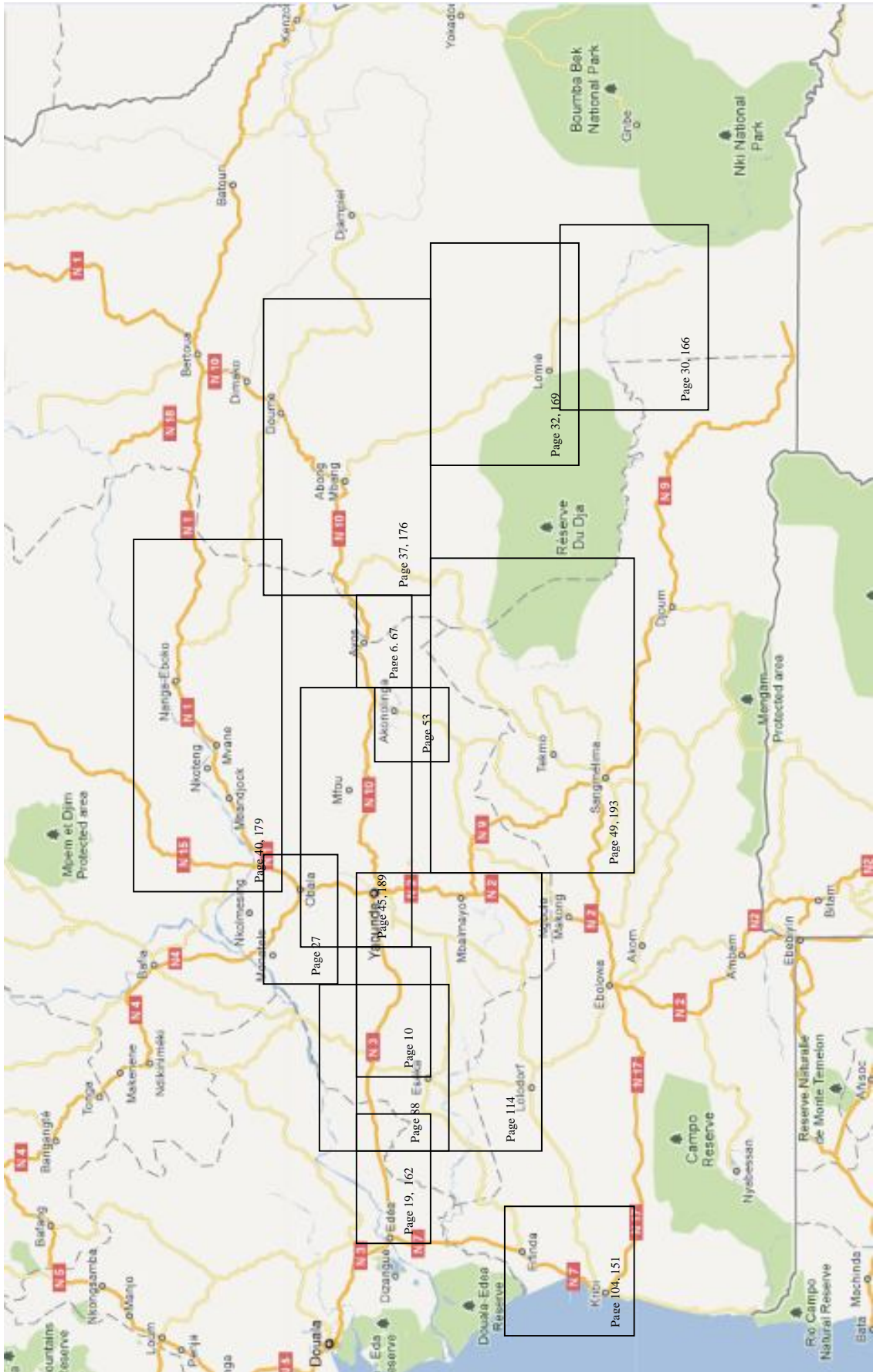
Christian Knudsen and Joseph Penaye using motorized drill. Photo: Martin Mehlsen

Samples with a high content of clay were drilled using a manual drill with a hollow tube tip, as the motorized drill either stopped on top of the clay bearing layer, or continued proving difficult to retrieve. Samples were then weighed, panned, labelled and packed for shipping.



Christian Knudsen and Martin Mehlsen using manual drill. Photo: Feiko Kalsbeek









Sample number 512401

Latitude 3,89215  
Longitude 12,54377  
Elevation 679 m  
Entry type GPS  
Sat. used 8

Sample date 04-03-2011

Geologist CKN

Material Gneiss  
Sample type Rock hand sample  
Notes Metamorphic sediment containing Quartz and Chlorite.  
Chlorite schist with tightly folded refolded isoclinal folds in quartz veins.  
The rock contains cm large garnet crystals which generally is retrograded to chlorite



Sample number 512402

Latitude 3,89215  
Longitude 12,54377  
Elevation 679 m  
Entry type GPS  
Sat. used 8

Sample date 04-03-2011

Geologist CKN

Material Gneiss

Sample type Rock hand sample

Notes Same location as 512401

Metamorphic sediment

Metamorphic sediment containing Quart and Chlorite.

Chlorite schist with tightly folded refolded isoclinal folds in quartz veins.

The rock contains cm large garnet crystals which generally is retrograded to chlorite



Sample number 512403

Latitude 3,8675  
Longitude 12,13944  
Elevation -  
Entry type GPS  
Sat. used -

Sample date 04-03-2011

Geologist CKN

Material Garnet-micaschist

Sample type Rock hand specimen

Notes Nyong river

Along the river in canoe there is an outcrop of garnet biotite schist.

Coarse grained with cm size garnets, rich q-feldspar schlieren





Sample number 512404

Latitude 3,8675  
Longitude 12,13944  
Elevation -  
Entry type GPS  
Sat. used -

Sample date 04-03-2011

Geologist CKN

Material Amphibolite  
Sample type Rock hand specimen  
Notes Same location as 512403  
Nyong river

Along the river in canoe there is an outcrop of garnet biotite schist. Coarse grained with cm size garnets, rich q-feldspar schlieren



Sample number 512405

Latitude 3,8561  
Longitude 11,5020  
Elevation -  
Entry type GPS  
Sat. used -

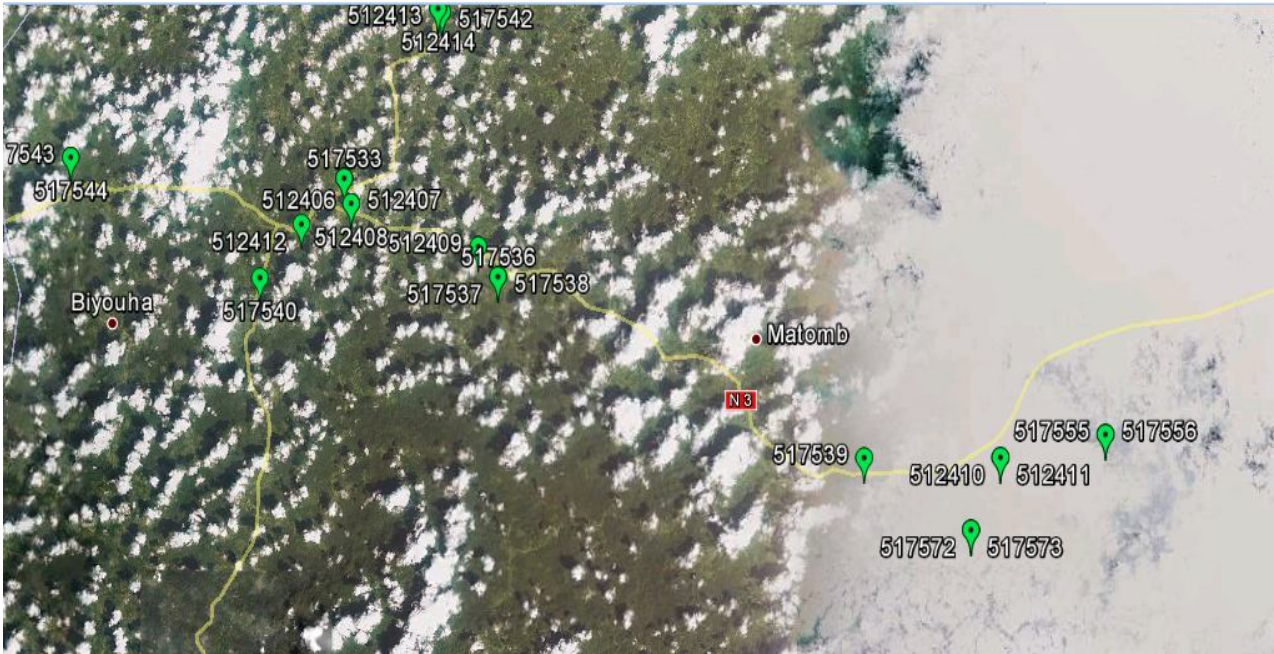
Sample date 07-03-2011

Geologist CKN

Material Quartz-dioritic gneiss,  
Sample type Rock hand specimen  
Notes Yaoundé

An outcrop of diorite. The rock is medium grained, mainly consisting of garnet biotite and feldspar. The rock is foliated, and has foliation parallel





Sample number 512406

Latitude 3,88032  
Longitude 10,86023  
Elevation 385  
Entry type GPS  
Sat. used 7

Sample date 08-03-2011

Geologist CKN

Material Gneiss

Sample type Rock hand sample

Notes Garnet mica schist

The main rocktype is a coarse grained garnet muscovite schist with garnets 1-5 mm pink





Sample number 512407

Latitude 3,88032  
Longitude 10,86023  
Elevation 385  
Entry type GPS  
Sat. used 7

Sample date 08-03-2011

Geologist CKN

Material Gneiss

Sample type Rock hand sample

Notes Same location as 512406

The main rocktype is a coarse grained garnet muscovite schist with garnets 1-5 mm pink



Sample number 512408

Latitude 3,88032  
Longitude 10,86023  
Elevation 385  
Entry type GPS  
Sat. used 7

Sample date 08-03-2011

Geologist CKN

Material Gneiss

Sample type Rock hand sample

Notes Same location as 512406

The main rocktype is a coarse grained garnet muscovite schist with garnets 1-5 mm pink



Sample number 512409

Latitude 3,86086  
Longitude 10,92706  
Elevation 396  
Entry type GPS  
Sat. used 8

Sample date 08-03-2011

Geologist CKN

Material Gneiss

Sample type Rock hand sample

Notes Road cut 5 km east of 512406-08

Garnet diorite coarse grained with up to 7 mm garnets.

There is white q-feldspar folded with a melanocratic rim rich in biotite (and pyrrhotite) this rim is is often fine grained and folded.



Sample number 512410

Latitude 3,76609  
Longitude 11,20060  
Elevation 715  
Entry type GPS  
Sat. used 9

Sample date 08-03-2011

Geologist CKN

Material Gneiss  
Sample type Rock hand sample

Notes Kyanite garnet biotite gneiss medium to coarse grained. Foliation defined by the parallel arrangement of biotite and kyanite and by schlieren of q-feldspar. Compositionally layered large (cm) feldspar blast rotated. There is a minor component of garnet biotite gneiss that may represent more sandy layers – is sampled to show detrital zircons





Sample number 512411

Latitude 3,76609  
Longitude 11,20060  
Elevation 715  
Entry type GPS  
Sat. used 9

Sample date 08-03-2011

Geologist CKN

Material Gneiss  
Sample type Rock hand sample  
Notes Same location as 512410

Kyanite garnet biotite gneiss medium to coarse grained. Foliation defined by the parallel arrangement of biotite and kyanite and by schlieren of q-feldspar. Compositionally layered large (cm) feldspar blast rotated. There is a minor component of garnet biotite gneiss that may represent more sandy layers – is sampled to show detrital zircons



Sample number 512412

Latitude 3,87101  
Longitude 10,83392  
Elevation 348  
Entry type GPS  
Sat. used 7

Sample date 09-03-2011

Geologist CKN

Material Schist  
Sample type Rock hand sample  
Colour Black  
Notes

Outcrop at the road south of town  
At least 3 m thick garnet amphibolite interlaced with a garnet biotite schist. According to Dr. Joseph Penaye this is medium grade metamorphism.



Sample number 512413

Latitude 3,96860  
Longitude 10,90572  
Elevation 376  
Entry type GPS  
Sat. used 10

Sample date 09-03-2011

Geologist CKN

Material Migmatite - amphibolite

Sample type Rock hand sample

Notes At the river Djouel, under the bridge

Amphibolite with garnet and biotite medium grained.





Sample number 512414

Latitude 3,96860  
Longitude 10,90572  
Elevation 376  
Entry type GPS  
Sat. used 10

Sample date 09-03-2011

Geologist CKN

Material Migmatite - granite

Sample type Rock hand sample

Notes Same location as 512413

At the river Djouel, under the bridge

Granite – granodiorite vein in biotite hbl gneiss with garnet.





Sample number 512415

Latitude 3,85839  
Longitude 10,55178  
Elevation 227  
Entry type GPS  
Sat. used 7

Sample date 09-03-2011

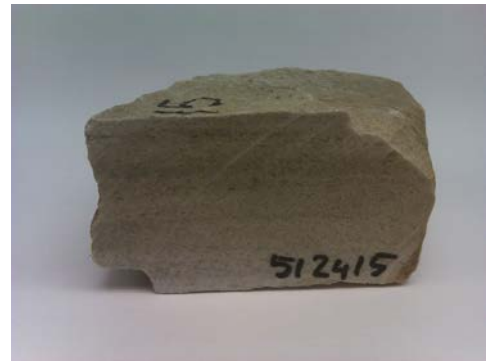
Geologist CKN

Material Metamorphic sediment – sandstone – quartzite

Sample type Rock hand sample

Notes Quarry at the roadside

Yaoundé group. A muscovite meta sandstone with a compositional layering. There is a grey version that also contain biotite





Sample number 512416

Latitude 4,04877  
Longitude 10,56956  
Elevation 234  
Entry type GPS  
Sat. used 9

Sample date 09-03-2011

Geologist CKN

Material Schist  
Sample type Rock hand sample  
Notes Babimbi at the river Sanga



Sample number 512417

Latitude 3,76000  
Longitude 10,84806  
Elevation -  
Entry type GPS  
Sat. used -

Sample date -

Geologist FK

Material Leptynite (felsic volcanic rock)  
Sample type Rock hand sample  
Notes Nyong group, Nyong river



Sample number 512418  
Latitude 3,75083  
Longitude 10,84389  
Elevation -  
Entry type GPS  
Sat. used -  
Sample date -  
Geologist FK  
Material Mafic metavolcanic rock  
Sample type Rock hand specimen  
Notes Nyong Group, Nyong river

Sample number 512419  
Latitude 3,64667  
Longitude 10,82833  
Elevation -  
Entry type GPS  
Sat. used -

Sample date -  
Geologist FK

Material Tonalitic gneiss  
Sample type Rock hand specimen  
Notes Nyong Group, roadside



Sample number 512420

Latitude 3,35000  
Longitude 10,95667  
Elevation -  
Entry type GPS  
Sat. used -

Sample date -

Geologist FK

Material Syenite  
Sample type Rock hand specimen  
Notes Intrusive into Nyong Group, roadside



Sample number 512421

Latitude 3,20556  
Longitude 11,05667  
Elevation -  
Entry type GPS  
Sat. used -

Sample date -

Geologist FK

Material Archaean TTG (charnockite)  
Sample type Rock hand specimen  
Notes Roadside quarry



Sample number 512422

Latitude 3,05000  
Longitude 11,19944  
Elevation -  
Entry type GPS  
Sat. used -

Sample date -

Geologist FK

Material Granitic vein in charnockite  
Sample type Rock hand specimen  
Notes Roadside quarry

Sample number 512423

Latitude 2,94694  
Longitude 11,55861  
Elevation -  
Entry type GPS  
Sat. used -

Sample date -

Geologist FK

Material Archean gneiss (TTG)  
Sample type Rock hand specimen  
Notes 3,2 Ga?





Sample number 512424

Latitude 3,41500  
Longitude 11,70028  
Elevation -  
Entry type GPS  
Sat. used -

Sample date -

Geologist FK

Material So'o granite (epidotized Archaean granulite)  
Sample type Rock hand specimen  
Notes So'o river



Sample number 512426

Latitude 3,43250  
Longitude 11,28710  
Elevation 656  
Entry type GPS  
Sat. used 10

Sample date 13-03-2011

Geologist CKN

Material Granite  
Sample type Rock hand sample  
Notes 20% Qtz – 65-80% Kfs  
Mineral Ass Fsp | Qtz | Amp



Sample number 512427

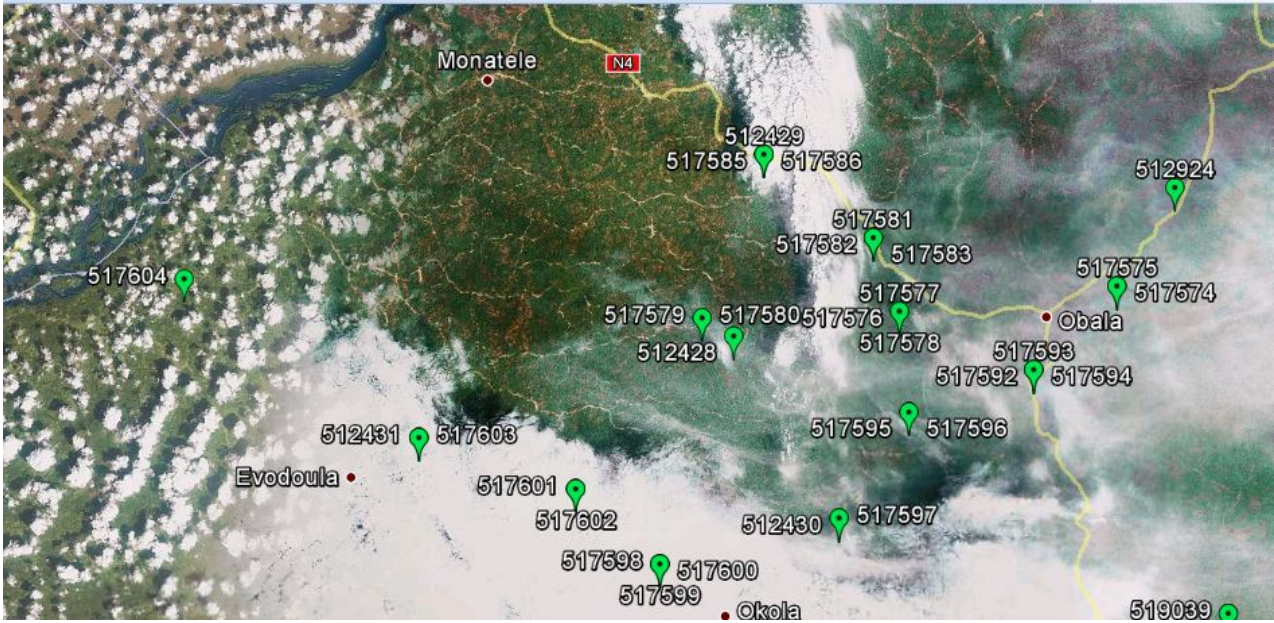
Latitude 3,60681  
Longitude 10,97159  
Elevation 592  
Entry type GPS  
Sat. used 7

Sample date 14-03-2011

Geologist CKN

Material Gneiss  
Sample type Rock hand sample  
Notes Ngwate, sandpit at the bank of the river Ngwate





Sample number 512428

Latitude 4,15118  
Longitude 11,38416  
Elevation 603  
Entry type GPS  
Sat. used 9

Sample date 16-03-2011

Geologist MMEH

Material Schist  
Sample type Rock hand sample  
Notes Nkolba, Quarry



Sample number 512429

Latitude 4,23706  
Longitude 11,39848  
Elevation 514  
Entry type GPS  
Sat. used 8

Sample date 17-03-2011

Geologist MMEH

Material Schist  
Sample type Rock hand sample  
Notes Nkomo, alluvial terrace





Sample number 512430

Latitude 4,06539  
Longitude 11,43424  
Elevation 620  
Entry type GPS  
Sat. used 7

Sample date 18-03-2011

Geologist MMEH

Material Gneiss  
Sample type Rock hand sample  
Notes Mvoua, at the river Yegue. Beadrock exposed in the river with app 1 meter sediment on top



Sample number 512431

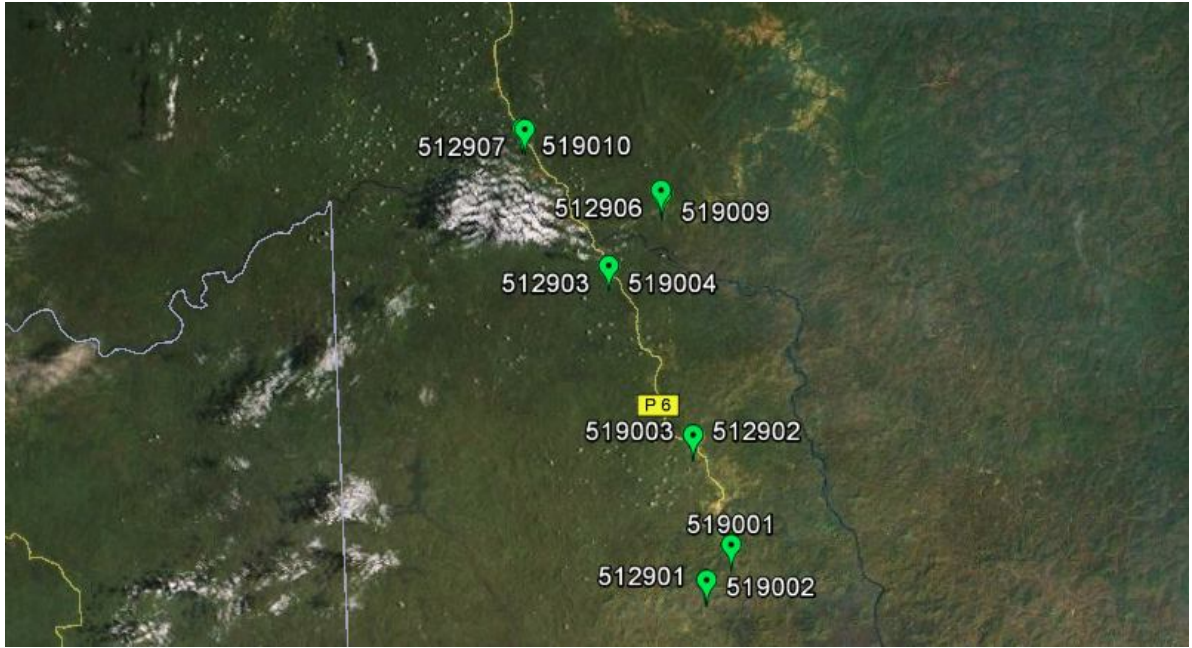
Latitude 4,10311  
Longitude 11,23453  
Elevation 467  
Entry type GPS  
Sat. used 8

Sample date 19-03-2011

Geologist MMEH

Material Gneiss  
Sample type Rock hand sample  
Notes At the river Angobo





Sample number 512901

Latitude 2,55329  
Longitude 14,013  
Elevation 555 m  
Entry type GPS

Sample date 04-03-2011

Geologist KB

Sample type Rock hand sample  
Locality Bareko  
Subdivision Ngoïla  
Type Metabasite (metagabbro?)



Sample number 512902

Latitude 2,69217  
Longitude 14,0012  
Elevation 571 m  
Entry type GPS

Sample date 04-03-2011

Geologist KB

Sample type Rock hand sample  
Locality Etekessang  
Subdivision Ngoïla  
Type Metabasite (amphibolite?)



Sample number 512903

Latitude 2,85423  
Longitude 13,9209  
Elevation 562 m  
Entry type GPS

Sample date 04-03-2011

Geologist KB

Sample type Rock hand sample  
Locality Zoulabot  
Subdivision Lomié  
Type Chlorite Schist



Sample number 512904

Latitude 3,325  
Longitude 14,0931  
Elevation 583 m  
Entry type GPS

Sample date 05-03-2011

Geologist KB

Sample type Rock hand sample  
Locality Mang Kako  
Subdivision Lomié  
Type Ultramafic rock (Serpentinised peridotite)







Sample number 512905

Latitude 3,18442  
Longitude 13,8466  
Elevation 642 m  
Entry type GPS

Sample date 05-03-2011

Geologist KB

Sample type Rock hand sample  
Locality Kongo  
Subdivision Lomié  
Type Chlorite Schist



Sample number 512906

Latitude 2,92614  
Longitude 13,9711  
Elevation 645 m  
Entry type GPS

Sample date 06-03-2011

Geologist KB

Sample type Rock hand sample  
Locality Massens  
Subdivision Messok  
Type Metagabbro



Sample number 512907

Latitude 2,98477  
Longitude 13,8409  
Elevation 573 m  
Entry type GPS

Sample date 06-03-2011

Geologist KB

Sample type Rock hand sample  
Locality Karagoua  
Subdivision Lomié  
Type Quartzite (intercalated in schists)



Sample number 512908

Latitude 3,14436  
Longitude 13,6446  
Elevation 607 m  
Entry type GPS

Sample date 06-03-2011

Geologist KB

Sample type Rock hand sample  
Locality Pouempoum  
Subdivision Lomié  
Type Garnet micaschist



Sample number 512909

Latitude 3,19325  
Longitude 13,6293  
Elevation 600 m  
Entry type GPS

Sample date 07-03-2011

Geologist KB

Sample type Rock hand sample  
Locality Pouempoum  
Subdivision Lomié  
Type Garnet micaschist



Sample number 512910

Latitude 3,6292  
Longitude 13,3725  
Elevation 710 m  
Entry type GPS

Sample date 08-03-2011

Geologist KB

Sample type Rock hand sample  
Locality Bedoumo  
Subdivision Abong Mbang  
Type Garnet micaschist







Sample number 512911

Latitude 3,76162  
Longitude 13,619  
Elevation 808 m  
Entry type GPS

Sample date 08-03-2011

Geologist KB

Sample type Rock hand sample  
Locality Kagnol  
Subdivision Abong Mbang  
Type Chlorite schist



Sample number 512912

Latitude 4,16939  
Longitude 13,3275  
Elevation 660 m  
Entry type GPS

Sample date 09-03-2011

Geologist KB

Sample type Rock hand sample  
Locality Bend  
Subdivision Doumé  
Type Metadiorite



Sample number 512913

Latitude 4,24086  
Longitude 13,4005  
Elevation 627 m  
Entry type GPS

Sample date 09-03-2011

Geologist KB

Sample type Rock hand sample  
Locality Mbama  
Subdivision Doumé  
Type Metadiorite



Sample number 512914

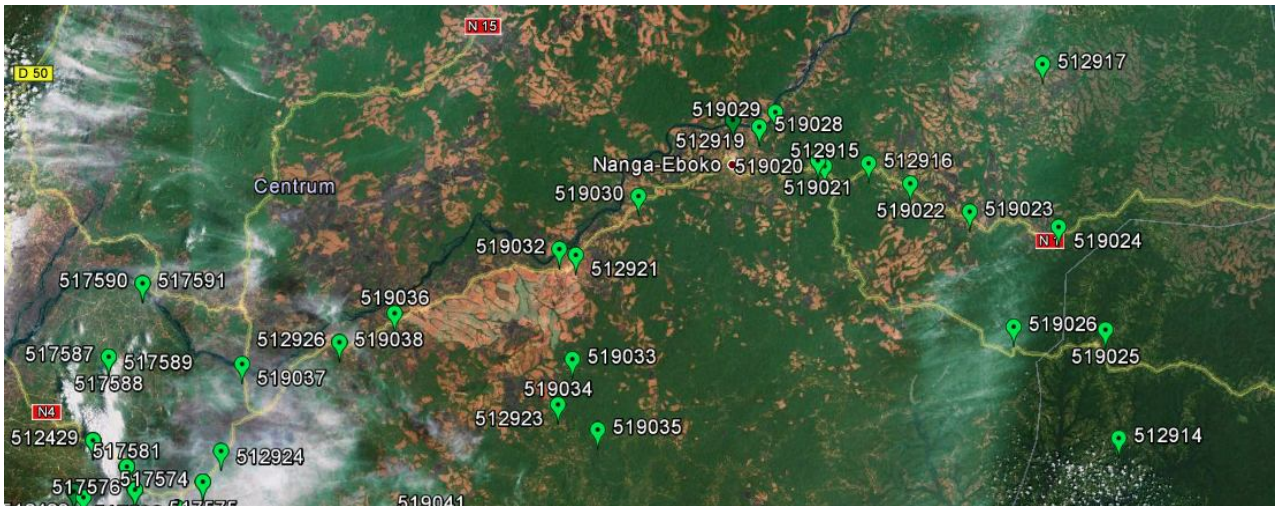
Latitude 4,24086  
Longitude 13,9603  
Elevation 627 m  
Entry type GPS

Sample date 09-03-2011

Geologist KB

Sample type Rock hand sample  
Locality Mbama  
Subdivision Abong Mbang  
Type Micaceous gneiss







Sample number 512915

Latitude 4,65149  
Longitude 12,5117  
Elevation 721 m  
Entry type GPS

Sample date 13-03-2011

Geologist KB

Sample type Rock hand sample  
Locality Nkoambang  
Subdivision Nanga Eboko  
Type Garnet micaschist



Sample number 512916

Latitude 4,6559  
Longitude 12,5788  
Elevation 761 m  
Entry type GPS

Sample date 13-03-2011

Geologist KB

Sample type Rock hand sample  
Locality Nkoambang  
Subdivision Nanga Eboko  
Type Garnet micaschist



Sample number 512917

Latitude 4,80577  
Longitude 12,8445  
Elevation 668 m  
Entry type GPS

Sample date 14-03-2011

Geologist KB

Sample type Rock hand sample  
Locality Ntal  
Subdivision Minta  
Type High grade gneiss with magnetite



Sample number 512918

Latitude 4,72102  
Longitude 12,3726  
Elevation 585 m  
Entry type GPS

Sample date 15-03-2011

Geologist KB

Sample type Rock hand sample  
Locality Bifogo  
Subdivision Nanga Eboko  
Type Quartzite



Sample number 512919

Latitude 4,71073  
Longitude 12,4127  
Elevation 604 m  
Entry type GPS

Sample date 15-03-2011

Geologist KB

Sample type Rock hand sample  
Locality Ndokoti  
Subdivision Nanga Eboko  
Type Amphibolite



Sample number 512921

Latitude 4,51782  
Longitude 12,1339  
Elevation 581 m  
Entry type GPS

Sample date 15-03-2011

Geologist KB

Sample type Rock hand sample  
Locality Nkoteng  
Subdivision Nkoteng  
Type Garnet and kyanite gneiss



Sample number 512923

Latitude 4,29243

Longitude 12,1069

Elevation 633 m

Entry type GPS

Sample date 16-03-2011

Geologist KB

Sample type Rock hand sample

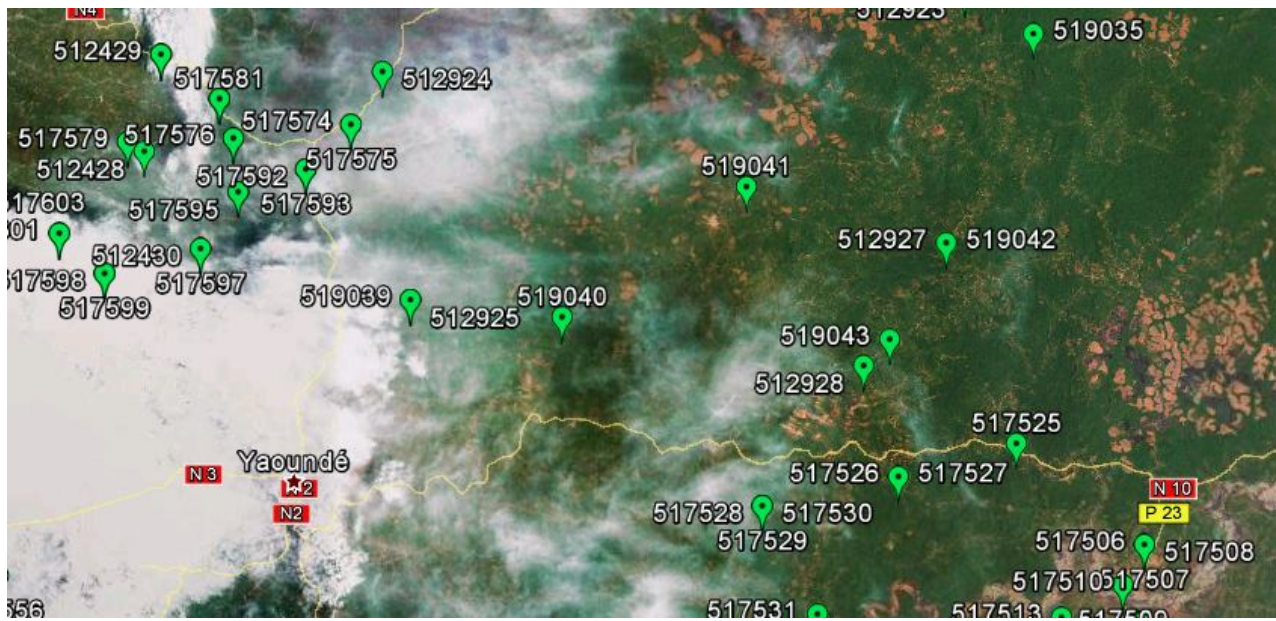
Locality Bisso

Subdivision Nkoteng

Type Garnet and kyanite gneiss







Sample number 512924

Latitude 4,22158  
Longitude 11,5942  
Elevation 495 m  
Entry type GPS

Sample date 17-03-2011

Geologist KB

Sample type Rock hand sample  
Locality Minkama  
Subdivision Obala  
Type Metadiorite (high grade)



Sample number 512925

Latitude 4,02035  
Longitude 11,6194  
Elevation 613 m  
Entry type GPS

Sample date 19-03-2011

Geologist KB

Sample type Rock hand sample  
Locality Mebougou  
Subdivision Soa  
Type Garnet and kyanite gneiss



Sample number 512926

Latitude 4,38605  
Longitude 11,7747  
Elevation 567 m  
Entry type GPS

Sample date 19-03-2011

Geologist KB

Sample type Rock hand sample  
Locality Minkouma  
Subdivision Mbandjock  
Type Garnet and biotite gneiss



Sample number 512927

Latitude 4,0706  
Longitude 12,0904  
Elevation 655 m  
Entry type GPS

Sample date 19-03-2011

Geologist KB

Sample type Rock hand sample  
Locality -  
Subdivision -  
Type Gneiss



Sample number 512928

Latitude 3,96269  
Longitude 12,0178  
Elevation 663 m  
Entry type GPS

Sample date 19-03-2011

Geologist KB

Sample type Rock hand sample  
Locality Olanuina  
Subdivision Asamba  
Type High grade mylonitic garnet gneiss



Sample number 512929

Latitude 3,41329  
Longitude 12,4869  
Elevation 623 m  
Entry type GPS

Sample date 20-03-2011

Geologist KB

Sample type Rock hand sample  
Locality Ngounayos  
Subdivision Bengbis  
Type Chlorite schist







Sample number 512930

Latitude 3,4556  
Longitude 12,3731  
Elevation 631 m  
Entry type GPS

Sample date 21-03-2011

Geologist KB

Sample type Rock hand sample  
Locality Bengbis  
Subdivision Bengbis  
Type Chlorite schist



Sample number 512931

Latitude 3,30176  
Longitude 12,2405  
Elevation 631 m  
Entry type GPS

Sample date 21-03-2011

Geologist KB

Sample type Rock hand sample  
Locality Assok  
Subdivision Sangmelima  
Type Mylonitic chlorite schist



Sample number 512932

Latitude 3,29488  
Longitude 12,2238  
Elevation 632 m  
Entry type GPS

Sample date 21-03-2011

Geologist KB

Sample type Rock hand sample  
Locality Nkolendam  
Subdivision Sangmelima  
Type High mylonitic schist



Sample number 512933

Latitude 3,17801  
Longitude 12,1279  
Elevation 653 m  
Entry type GPS

Sample date 21-03-2011

Geologist KB

Sample type Rock hand sample  
Locality Nkonemekak  
Subdivision Sangmelime  
Type Ultramafic rock



Sample number 512934

Latitude 3,04582  
Longitude 12,0315  
Elevation 708 m  
Entry type GPS

Sample date 21-03-2011

Geologist KB

Sample type Rock hand sample  
Locality Akomedibi  
Subdivision Sangmelima  
Type Charnokite



Sample number 512935

Latitude 3,35545  
Longitude 12,4354  
Elevation 627 m  
Entry type GPS

Sample date 22-03-2011

Geologist KB

Sample type Rock hand sample  
Locality Nkolmekaé  
Subdivision Dja et lobo  
Type Dioritic orthogneiss







Sample number 517501

Latitude 3,703001  
Longitude 12,29323  
Elevation 680 m  
Entry type GPS  
Sat. used 10

Sample date 02-03-2011

Geologist CKN

Material Sandy conglomerate  
Sample type Soil sediment sample  
Colour Brown-grey  
Sample weight 4,7 kg  
Reduced weight 100 g  
Sample depth 0-1 m

Vegetation Dense

#### Notes





Sample number	517502
Latitude	3,703001
Longitude	12,29323
Elevation	680 m
Entry type	GPS
Sat. used	10
Sample date	02-03-2011
Geologist	CKN
Material	Sand
Sample type	Soil sediment sample
Colour	Ggrey
Sample weight	2,6 kg
Reduced weight	183 g
Sample depth	0-2 m
Vegetation	Dense
Notes	Same location as 517501

Sample number 517503

Latitude 3,73622  
Longitude 12,26067  
Elevation 666 m  
Entry type GPS  
Sat. used 9

Sample date 02-03-2011

Geologist CKN

Material Sand  
Sample type Soil sediment sample  
Colour Light grey to white  
Sample weight 4,1 kg  
Reduced weight 207 g  
Sample depth 0-1 m

Vegetation Dense

Notes



Sample number 517504

Latitude 3,703001  
Longitude 12,29323  
Elevation 680 m  
Entry type GPS  
Sat. used 10

Sample date 02-03-2011

Geologist CKN

Material Sand  
Sample type Soil sediment sample  
Colour Light grey to white  
Sample weight 9,9 kg  
Reduced weight 46 g  
Sample depth 1-2 m

Vegetation Dense

Notes Same location as 517503

Sample number 517505

Latitude 3,703001  
Longitude 12,29323  
Elevation 680 m  
Entry type GPS  
Sat. used 10

Sample date 02-03-2011

Geologist CKN

Material Sand with clay  
Sample type Soil sediment sample  
Colour Brown-grey  
Sample weight 26,8 kg  
Reduced weight 466 g  
Sample depth 2-3 m

Vegetation Dense

Notes Same location as 517503

Sample number 517506

Latitude 3,80494  
Longitude 12,26464  
Elevation 677 m  
Entry type GPS  
Sat. used 9

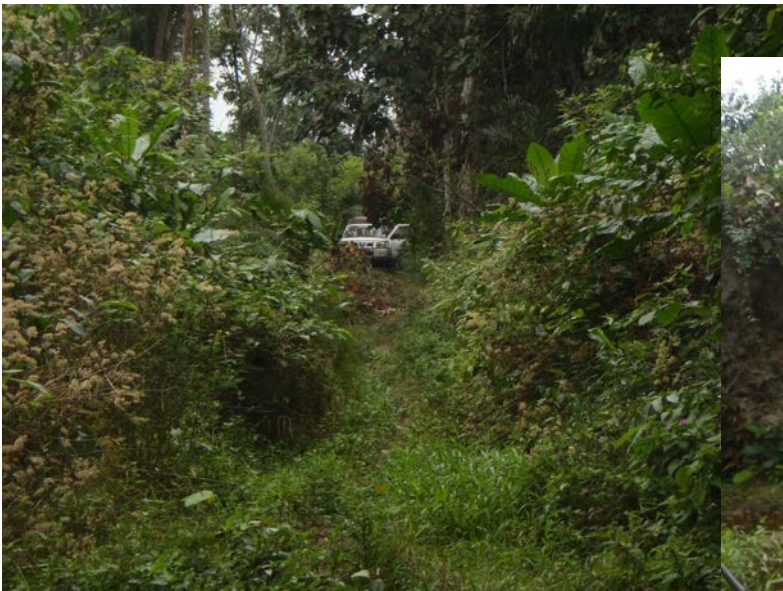
Sample date 03-03-2011

Geologist CKN

Material Sand with clay  
Sample type Soil sediment sample  
Colour Light gray to white  
Sample weight 3,9 kg  
Reduced weight 61 g  
Sample depth 0-1 m

Vegetation Dense

Notes This locality is above the river valley floor and may represent an alluvial terrace.



Sample number 517507

Latitude 3,80494  
Longitude 12,26464  
Elevation 677 m  
Entry type GPS  
Sat. used 9

Sample date 03-03-2011

Geologist CKN

Material Sand with clay  
Sample type Soil sediment sample  
Colour Light gray to white  
Sample weight 7,6 kg  
Reduced weight 129 g  
Sample depth 1-2 m

Vegetation Dense

Notes Same location as 517506  
This locality is above the river valley floor and may represent an alluvial terrace.



Sample number 517508

Latitude 3,80494  
Longitude 12,26464  
Elevation 677 m  
Entry type GPS  
Sat. used 9

Sample date 03-03-2011

Geologist CKN

Material Sand with clay  
Sample type Soil sediment sample  
Colour Light gray to white  
Sample weight 16,9 kg  
Reduced weight 328 g  
Sample depth 2-3 m

Vegetation Dense

Notes Same location as 517506  
This locality is above the river valley floor and may represent an alluvial terrace.  
This sample is Kaolinite rich clay with some mica and sand. Took a separate sample for test of Kaolinite

Sample number 517509

Latitude 3,76928  
Longitude 12,24577  
Elevation 662 m  
Entry type GPS  
Sat. used 9

Sample date 03-03-2011

Geologist CKN

Material Corse sand  
Sample type Soil sediment sample  
Colour Gray  
Sample weight 4,3 kg  
Reduced weight 96 g  
Sample depth 0-1 m

Vegetation Sparse

Notes This is drilled at the riverside at the bridge (south side)



Sample number	517510
Latitude	3,76928
Longitude	12,24577
Elevation	662 m
Entry type	GPS
Sat. used	9
Sample date	03-03-2011
Geologist	CKN
Material	Sand
Sample type	Soil sediment sample
Colour	Gray
Sample weight	5,2 kg
Reduced weight	61 g
Sample depth	0-1 m
Vegetation	Sparse
Notes	This is drilled at the riverside at the bridge (south side) Same location as 517509

Sample number 517511

Latitude 3,69907  
Longitude 12,19172  
Elevation 666 m  
Entry type GPS  
Sat. used 9

Sample date 03-03-2011

Geologist CKN

Material Sand  
Sample type Soil sediment sample  
Colour Rusty coloured  
Sample weight 11,6 kg  
Reduced weight 358 g  
Sample depth 1,5-2 m

Vegetation Dense

Notes Near a small river app. 50 meters from the road.  
There is an old exploration well here 10 meters south of the road. We  
drill on the north side.



Sample number 517512

Latitude 3,69907  
Longitude 12,19172  
Elevation 666 m  
Entry type GPS  
Sat. used 9

Sample date 03-03-2011

Geologist CKN

Material Sand  
Sample type Soil sediment sample  
Colour Rusty coloured  
Sample weight 17,8 kg  
Reduced weight 617 g  
Sample depth 2-3 m

Vegetation Dense

Notes Near a small river app. 50 meters from the road.  
There is an old exploration well here 10 meters south of the road. We  
drill on the north side.  
Drilling stopped at bedrock  
Same location as 517511



Sample number 517513

Latitude 3,74085  
Longitude 12,19183  
Elevation 657 m  
Entry type GPS  
Sat. used 9

Sample date 03-03-2011

Geologist CKN

Material Sand with kaolin  
Sample type Soil sediment sample  
Colour Light gray to white  
Sample weight 14,7 kg  
Reduced weight 313 g  
Sample depth 0-1 m

Vegetation Dense

Notes 10 m. north of the road where local people dig sand at the bottom of a small river valley.



Sample number 517514

Latitude 3,74085  
Longitude 12,19183  
Elevation 657 m  
Entry type GPS  
Sat. used 9

Sample date 03-03-2011

Geologist CKN

Material Sand with kaolin  
Sample type Soil sediment sample  
Colour Light gray to white  
Sample weight 10,7 kg  
Reduced weight 834 g  
Sample depth 0-2 m

Vegetation Dense

Notes 10 m. north of the road where local people dig sand at the bottom of a small river valley.  
Same location as 517513







Sample number 517515

Latitude 3,89789  
Longitude 12,63831  
Elevation 662 m  
Entry type GPS  
Sat. used 10

Sample date 04-03-2011

Geologist CKN

Material Fine sand  
Sample type Soil sediment sample  
Colour Brown-gray  
Sample weight 3,7 kg  
Reduced weight 217 g  
Sample depth 0-1 m

Vegetation Sparse

Notes There is an artisan sand production at the side of the riverbank using dug out canoes. Got at 3,5 meter profile in brown sand with a 10 cm kaolinite layer at 2,5 meter







Sample number	517516
Latitude	3,89789
Longitude	12,63831
Elevation	662 m
Entry type	GPS
Sat. used	10
Sample date	04-03-2011
Geologist	CKN
Material	Fine sand
Sample type	Soil sediment sample
Colour	Brown-gray
Sample weight	5,1 kg
Reduced weight	- g
Sample depth	1-2 m
Vegetation	Sparse
Notes	Same location as 517515 There is an artisan sand production at the side of the riverbank using dug out canoes. Got at 3,5 meter profile in brown sand with a 10 cm kaolinite layer at 2,5 meter

Sample number 517517

Latitude 3,89789  
Longitude 12,63831  
Elevation 662 m  
Entry type GPS  
Sat. used 10

Sample date 04-03-2011

Geologist CKN

Material Fine sand  
Sample type Soil sediment sample  
Colour Brown-gray  
Sample weight 5,9 kg  
Reduced weight 387 g  
Sample depth 2-3 m

Vegetation Sparse

Notes Same location as 517515  
There is an artisan sand production at the side of the riverbank using dug out canoes. Got at 3,5 meter profile in brown sand with a 10 cm kaolinite layer at 2,5 meter

Sample number	517518
Latitude	3,89789
Longitude	12,63831
Elevation	662 m
Entry type	GPS
Sat. used	10
Sample date	04-03-2011
Geologist	CKN
Material	Fine sand
Sample type	Soil sediment sample
Colour	Brown-gray
Sample weight	1,6 kg
Reduced weight	74 g
Sample depth	3-3,5 m
Vegetation	Sparse
Notes	Same location as 517515 There is an artisan sand production at the side of the riverbank using dug out canoes. Got at 3,5 meter profile in brown sand with a 10 cm kaolinite layer at 2,5 meter

Sample number	517519
Latitude	3,76897
Longitude	12,81740
Elevation	683 m
Entry type	GPS
Sat. used	11
Sample date	04-03-2011
Geologist	CKN
Material	Dark organic possible sand
Sample type	Soil sediment sample
Colour	Dark brown to black
Sample weight	2,9 kg
Reduced weight	0 g
Sample depth	3-3,5 m
Vegetation	Dense
Notes	Sample was pure organic material

Sample number 517520

Latitude 3,81395  
Longitude 12,86425  
Elevation 692 m  
Entry type GPS  
Sat. used 9

Sample date 04-03-2011

Geologist CKN

Material Clay with sand  
Sample type Soil sediment sample  
Colour Light gray to white  
Sample weight 3,1 kg  
Reduced weight 133 g  
Sample depth 3-3,5 m

Vegetation Dense

Notes Angry people, tribal counsel  
50 m east of the road, there is a small sand quarry with up to 5 cm quartz cobbles. We drill ca 20 m of the sandpit.





Sample number 517521

Latitude 3,91570  
Longitude 12,64810  
Elevation 675 m  
Entry type GPS  
Sat. used 9

Sample date 05-03-2011

Geologist CKN

Material Clay with a small amount of sand  
Sample type Soil sediment sample  
Colour Light gray to white  
Sample weight 5,6 kg  
Reduced weight 48 g  
Sample depth 0-1 m

Vegetation Dense

Notes The sample is taken in a small sandpit 200 m north of the road



Sample number	517522
Latitude	3,91570
Longitude	12,64810
Elevation	675 m
Entry type	GPS
Sat. used	9
Sample date	05-03-2011
Geologist	CKN
Material	Clay with sand
Sample type	Soil sediment sample
Colour	Brown-gray
Sample weight	2,7 kg
Reduced weight	495 g
Sample depth	3-4 m
Vegetation	Dense
Notes	Same location as 517522 The sample is taken in a small sandpit 200 m north of the road

Sample number 517523

Latitude 3,92587  
Longitude 12,66295  
Elevation 671 m  
Entry type GPS  
Sat. used 10

Sample date 05-03-2011

Geologist CKN

Material Fine sand  
Sample type Soil sediment sample  
Colour Light gray to white  
Sample weight 6,1 kg  
Reduced weight 43 g  
Sample depth 0-1 m

Vegetation Dense

Notes The locality is ca 5 km to the east of the village, where there is a small bridge. The locality is 30 m north of the road next to the river. The sand is white, fine to medium grained, poorly sorted. There is only little HM black shiny grains.



Sample number 517524

Latitude 3,92587  
Longitude 12,66295  
Elevation 671 m  
Entry type GPS  
Sat. used 10

Sample date 05-03-2011

Geologist CKN

Material Fine sand  
Sample type Soil sediment sample  
Colour Light gray to white  
Sample weight 4,5 kg  
Reduced weight 105 g  
Sample depth 1-2 m

Vegetation Dense

Notes Same locality as 517523  
The locality is ca 5 km to the east of the village, where there is a small bridge. The locality is 30 m north of the road next to the river.  
The sand is white, fine to medium grained, poorly sorted. There is only little HM black shiny grains.







Sample number 517525

Latitude 3,89410  
Longitude 12,15199  
Elevation 667 m  
Entry type GPS  
Sat. used 10

Sample date 05-03-2011

Geologist CKN

Material Clay  
Sample type Soil sediment sample  
Colour Light gray to white  
Sample weight 6,3 kg  
Reduced weight 112 g  
Sample depth 0-4 m

Vegetation Dense

Notes Just north of the road, where there is a bridge over the river Mfoumou. The hole is 3,5 m clay, there is some heavy minerals in fine sand to silt fraction.



Sample number 517526

Latitude 3,86502  
Longitude 12,04834  
Elevation 676 m  
Entry type GPS  
Sat. used 6

Sample date 05-03-2011

Geologist CKN

Material Sand  
Sample type Soil sediment sample  
Colour Grey  
Sample weight 7,7 kg  
Reduced weight 87 g  
Sample depth 0-1 m

Vegetation Dense

Notes App. 6 km south of the asphalt road, to the west ca 200 m.

Sample number 517527

Latitude 3,86502  
Longitude 12,04834  
Elevation 676 m  
Entry type GPS  
Sat. used 6

Sample date 05-03-2011

Geologist CKN

Material Sand with clay  
Sample type Soil sediment sample  
Colour Light gray to white  
Sample weight 6,9 kg  
Reduced weight 116 g  
Sample depth 1-2 m

Vegetation Dense

Notes Same location as 517526  
App. 6 km south of the asphalt road, to the west ca 200 m.

Sample number 517528

Latitude 3,83916  
Longitude 11,92886  
Elevation 673 m  
Entry type GPS  
Sat. used 5

Sample date 06-03-2011

Geologist CKN

Material Clay with sand  
Sample type Soil sediment sample  
Colour Grey  
Sample weight 3,7 kg  
Reduced weight 140 g  
Sample depth 0-1 m

Vegetation Dense

Notes Afamba River  
There is a clay layer at the top, and the grainsize increases towards the bottom, where we find som gravel problems above the basement.



Sample number 517529

Latitude 3,83916  
Longitude 11,92886  
Elevation 673 m  
Entry type GPS  
Sat. used 5

Sample date 06-03-2011

Geologist CKN

Material Sand  
Sample type Soil sediment sample  
Colour Grey  
Sample weight 4,7 kg  
Reduced weight 206 g  
Sample depth 1-2 m

Vegetation Dense

Notes Same location as 517528  
Afamba River  
There is a clay layer at the top, and the grainsize increses towards the bottom, where w find som gravel problems above the basement.

Sample number 517530

Latitude 3,83916  
Longitude 11,92886  
Elevation 673 m  
Entry type GPS  
Sat. used 5

Sample date 06-03-2011

Geologist CKN

Material Sand  
Sample type Soil sediment sample  
Colour Grey  
Sample weight 5,8 kg  
Reduced weight 205 g  
Sample depth 2-3 m

Vegetation Dense

Notes Same location as 517528  
Afamba River  
There is a clay layer at the top, and the grainsize increses towards the bottom, where w find som gravel problems above the basement.



Sample number 517531

Latitude 3,74371  
Longitude 11,97740  
Elevation 655 m  
Entry type GPS  
Sat. used 7

Sample date 06-03-2011

Geologist CKN

Material Sand  
Sample type Soil sediment sample  
Colour Grey  
Sample weight 5,3 kg  
Reduced weight 36 g  
Sample depth 0-1 m

Vegetation Sparse

Notes At the opposite side of the river from the GPS-coordinates  
We have to cross the river in a canoe to get to the site. The sand is very  
fine grained and the drill gets stuck several times.





Sample number 517532

Latitude 3,74371  
Longitude 11,97740  
Elevation 655 m  
Entry type GPS  
Sat. used 7

Sample date 06-03-2011

Geologist CKN

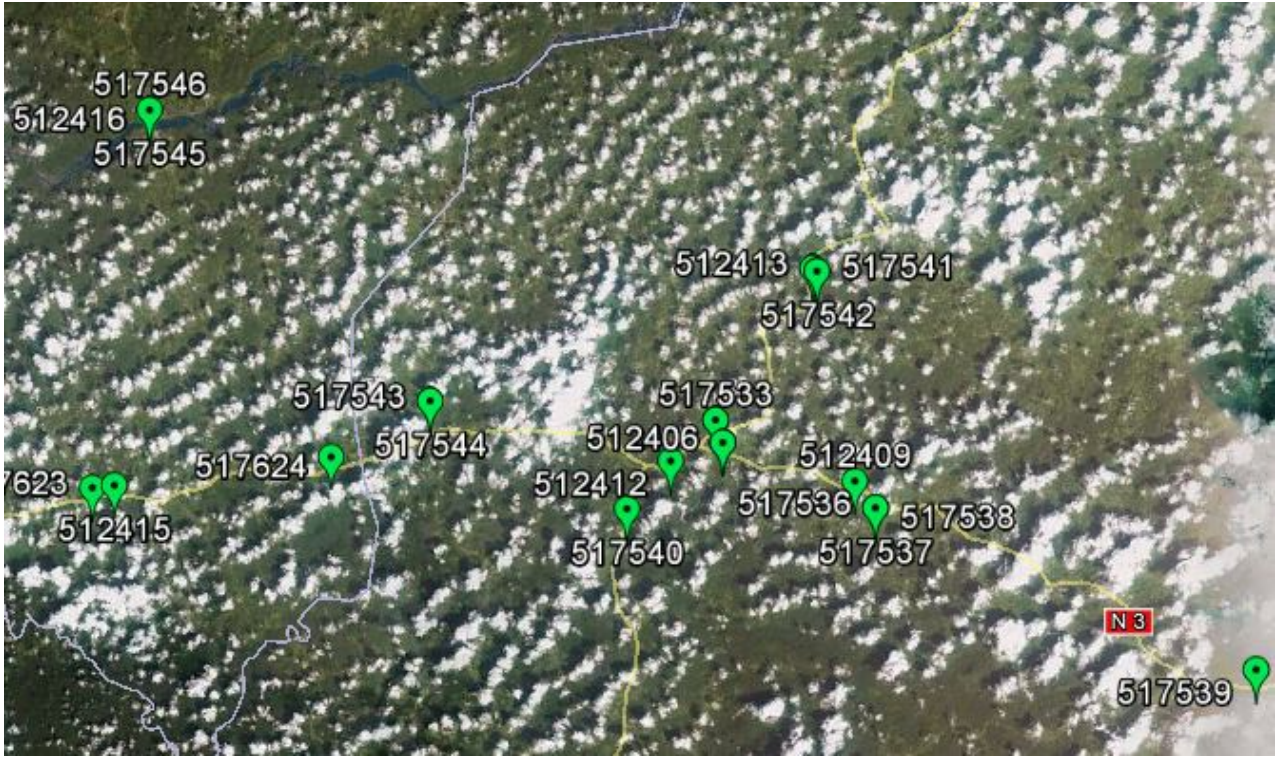
Material Fine sand  
Sample type Soil sediment sample  
Colour Grey  
Sample weight 5,0 kg  
Reduced weight 306 g  
Sample depth 1-2 m

Vegetation Sparse

Notes Same location as 517531  
At the opposite side of the river from the GPS-coordinates  
We have to cross the river in a canoe to get to the site. The sand is very fine grained and the drill gets stuck several times.







Sample number 517533

Latitude 3,89173  
Longitude 10,85659  
Elevation 371 m  
Entry type GPS  
Sat. used 9

Sample date 08-03-2011

Geologist CKN

Material Sand with clay  
Sample type Soil sediment sample  
Colour Grey  
Sample weight 3,7 kg  
Reduced weight 145 g  
Sample depth 0-1 m

Vegetation Dense

Notes Sandpit, alluvial terrace, Boumnyebel  
They mine the upper 80 cm, which is visible in profile. The sand is fine to medium grained. We try the hand drill, and are able to go down 5 m in the same time as the auger get 2,5 m









Sample number 517534

Latitude 3,89173  
Longitude 10,85659  
Elevation 371 m  
Entry type GPS  
Sat. used 9

Sample date 08-03-2011

Geologist CKN

Material Sand with clay  
Sample type Soil sediment sample  
Colour Light grey to white  
Sample weight 4,2 kg  
Reduced weight 101 g  
Sample depth 2-4 m

Vegetation Dense

Notes Same location as 517533  
Sample was rich in muscovite, Sandpit, alluvial terrace, Boumnyebel  
They mine the upper 80 cm, which is visible in profile. The sand is fine  
to medium grained. We try the hand drill, and are able to go down 5 m  
in the same time as the auger get 2,5 m

Sample number 517535

Latitude 3,89173  
Longitude 10,85659  
Elevation 371 m  
Entry type GPS  
Sat. used 9

Sample date 08-03-2011

Geologist CKN

Material Sand with clay  
Sample type Soil sediment sample  
Colour Brown-grey  
Sample weight 5,2 kg  
Reduced weight 67 g  
Sample depth 4-5 m

Vegetation Dense

Notes Same location as 517533  
Sample was rich in muscovite, Sandpit, alluvial terrace, Boumnyebel  
They mine the upper 80 cm, which is visible in profile. The sand is fine  
to medium grained. We try the hand drill, and are able to go down 5 m  
in the same time as the auger get 2,5 m

Sample number 517536

Latitude 3,84733  
Longitude 10,93748  
Elevation 399 m  
Entry type GPS  
Sat. used 9

Sample date 08-03-2011

Geologist CKN

Material Sand with muscovite  
Sample type Soil sediment sample  
Colour Rusty coloured  
Sample weight 5,9 kg  
Reduced weight 432 g  
Sample depth 0-1 m

Vegetation Dense

Notes Sandpit at the river Ndoupe, Lamal Pougue  
There is a 1½ m profile exposed



Sample number	517537
Latitude	3,84733
Longitude	10,93748
Elevation	399 m
Entry type	GPS
Sat. used	9
Sample date	08-03-2011
Geologist	CKN
Material	Fine sand with clay
Sample type	Soil sediment sample
Colour	Rusty coloured
Sample weight	5,9 kg
Reduced weight	256 g
Sample depth	1-2 m
Vegetation	Dense
Notes	Same location as 517536 Sandpit at the river Ndoupe, Lamal Pougue There is a 1½ m profile exposed

Sample number 517538

Latitude 3,84733  
Longitude 10,93748  
Elevation 399 m  
Entry type GPS  
Sat. used 9

Sample date 08-03-2011

Geologist CKN

Material Sand  
Sample type Soil sediment sample  
Colour Rusty coloured  
Sample weight 7,9 kg  
Reduced weight 382 g  
Sample depth 2-3 m

Vegetation Dense

Notes Same location as 517536  
Sandpit at the river Ndoupe, Lamal Pougue  
There is a 1½ m profile exposed





Sample number 517539

Latitude 3,76587  
Longitude 11,12937  
Elevation 671 m  
Entry type GPS  
Sat. used 10

Sample date 08-03-2011

Geologist CKN

Material Fine sand  
Sample type Soil sediment sample  
Colour Rusty coloured  
Sample weight 6,0 kg  
Reduced weight 1165 g  
Sample depth 0,5-2 m

Vegetation Dense

Notes Nkongdok, sandpit, alluvial terrace just north of the main road. In a ca 500 m wide valley.  
There is clay rich layers together with the poorly sorted sand with gravel. The sand is rich in heavy minerals



Sample number	517540
Latitude	3,84677
Longitude	10,81187
Elevation	207 m
Entry type	GPS
Sat. used	10
Sample date	09-03-2011
Geologist	CKN
Material	Sand and gravel
Sample type	Soil sediment sample
Colour	Rusty coloured
Sample weight	3,8 kg
Reduced weight	99 g
Sample depth	0-1 m
Vegetation	Dense
Notes	River La Kelle

Sample number 517541

Latitude 3,96705  
Longitude 10,90789  
Elevation 354 m  
Entry type GPS  
Sat. used 8

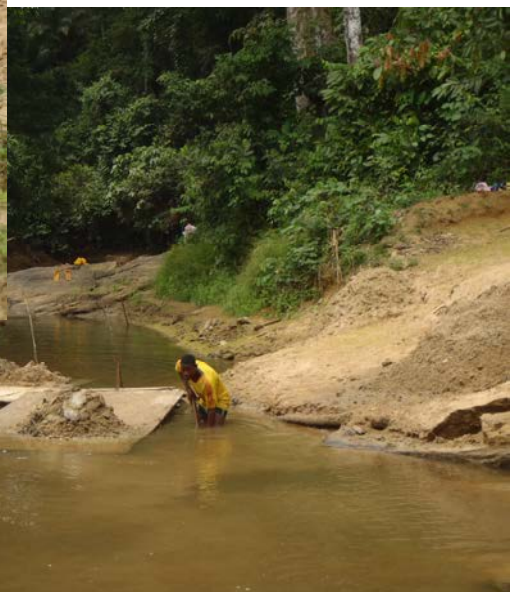
Sample date 09-03-2011

Geologist CKN

Material Sand  
Sample type Soil sediment sample  
Colour Rusty coloured  
Sample weight 5,0 kg  
Reduced weight 117 g  
Sample depth 0-1,75 m

Vegetation Dense

Notes River Djouel, alluvial terrace, sandpit  
The villegers dig sand and gravel from the river bed where they dig on to small barges. The upper sample is taken in a ca 1,3 m profile. The lower sample is taken below the river surface



Sample number	517542
Latitude	3,96705
Longitude	10,90789
Elevation	354 m
Entry type	GPS
Sat. used	8
Sample date	09-03-2011
Geologist	CKN
Material	Sand
Sample type	Soil sediment sample
Colour	Rusty coloured
Sample weight	7,5 kg
Reduced weight	461 g
Sample depth	1,75-2,75 m
Vegetation	Dense
Notes	Same location as 517541 River Djouel, alluvial terrace, sandpit The villegers dig sand and gravel from the river bed where they dig on to small barges. The upper sample is taken in a ca 1,3 m profile. The lower sample is taken below the river surface

Sample number	517543
Latitude	3,90125
Longitude	10,71206
Elevation	223 m
Entry type	GPS
Sat. used	10
Sample date	09-03-2011
Geologist	CKN
Material	Sand
Sample type	Soil sediment sample
Colour	Brown-grey
Sample weight	5,5 kg
Reduced weight	236 g
Sample depth	Dug next to the river
Vegetation	Dense
Notes	Peslipan at the river Leptol



Sample number	517544
Latitude	3,90125
Longitude	10,71206
Elevation	223 m
Entry type	GPS
Sat. used	10
Sample date	09-03-2011
Geologist	CKN
Material	Sand
Sample type	Soil sediment sample
Colour	Rusty coloured
Sample weight	11,4 kg
Reduced weight	257 g
Sample depth	30-60 cm
Vegetation	Dense
Notes	Peslipan at the river Leptol

Sample number 517545

Latitude 4,04877  
Longitude 10,56956  
Elevation 234 m  
Entry type GPS  
Sat. used 9

Sample date 09-03-2011

Geologist CKN

Material Sand  
Sample type Soil sediment sample  
Colour Rusty coloured  
Sample weight 4,9 kg  
Reduced weight 58 g  
Sample depth Dug from a side stream

Vegetation Dense

Notes Baimbi at the river Sanga



Sample number 517546

Latitude 4,04877  
Longitude 10,56956  
Elevation 234 m  
Entry type GPS  
Sat. used 9

Sample date 09-03-2011

Geologist CKN

Material Sand  
Sample type Soil sediment sample  
Colour Rusty coloured  
Sample weight 4,0 kg  
Reduced weight 33 g  
Sample depth Dug from the main river

Vegetation Dense

Notes Baimbi at the river Sanga







Sample number 517547

Latitude 3,26022

Longitude 9,90303

Elevation 15 m

Entry type GPS

Sat. used 12

Sample date 10-03-2011

Geologist CKN

Material Fine sand

Sample type Soil sediment sample

Colour Brown-grey

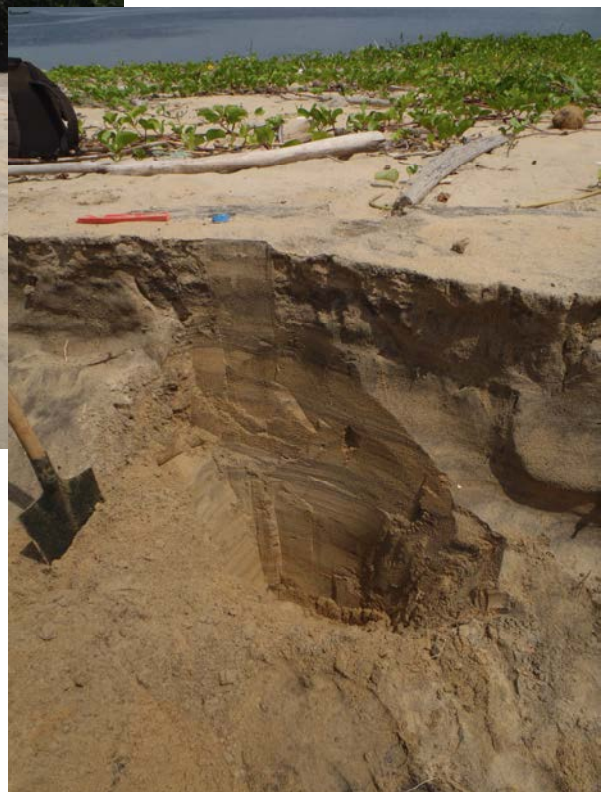
Sample weight 5,3 kg

Reduced weight 837 g

Sample depth 0-1 m

Vegetation Sparse

Notes Malanda, at the mouth of the Nyong river







Sample number	517548
Latitude	3,26022
Longitude	9,90303
Elevation	15 m
Entry type	GPS
Sat. used	12
Sample date	10-03-2011
Geologist	CKN
Material	Sand
Sample type	Soil sediment sample
Colour	Brown-grey
Sample weight	2,7 kg
Reduced weight	484 g
Sample depth	1-2 m
Vegetation	Sparse
Notes	Same location as 517547 Malanda, at the mouth of the Nyong river

Sample number	517549
Latitude	3,26022
Longitude	9,90303
Elevation	15 m
Entry type	GPS
Sat. used	12
Sample date	10-03-2011
Geologist	CKN
Material	Sand
Sample type	Soil sediment sample
Colour	Brown-grey
Sample weight	1,6 kg
Reduced weight	395 g
Sample depth	2-3 m
Vegetation	Sparse
Notes	Same location as 517547 Malanda, at the mouth of the Nyong river

Sample number 517550

Latitude 3,25678

Longitude 9,90606

Elevation 14 m

Entry type GPS

Sat. used 9

Sample date 10-03-2011

Geologist CKN

Material Sand

Sample type Soil sediment sample

Colour Brown-grey

Sample weight 2,8 kg

Reduced weight 95 g

Sample depth 0-1 m

Vegetation Dense

Notes Close to the coast, opposite Malanda, at the mouth of the Nyong river.  
At the riverside of the ca 100 m wide stretch of land between the river  
and the Atlantic ocean, on the southside of the mouth of the river Nyong



Sample number 517551

Latitude 3,25678

Longitude 9,90606

Elevation 14 m

Entry type GPS

Sat. used 9

Sample date 10-03-2011

Geologist CKN

Material Sand

Sample type Soil sediment sample

Colour Rusty coloured

Sample weight 2,9 kg

Reduced weight 93 g

Sample depth 1-2 m

Vegetation Dense

Notes Same location as 517550

Close to the coast, opposite Malanda, at the mouth of the Nyong river.

At the riverside of the ca 100 m wide stretch of land between the river and the Atlantic ocean, on the southside of the mouth of the river Nyong





Sample number 517552

Latitude 3,25658

Longitude 9,90501

Elevation 25 m

Entry type GPS

Sat. used 9

Sample date 10-03-2011

Geologist CKN

Material Sand

Sample type Soil sediment sample

Colour Rusty coloured

Sample weight 1,3 kg

Reduced weight 92 g

Sample depth 0-1 m

Vegetation Dense

Notes Close to the coast, opposite Malanda, at the mouth of the Nyong river. In the center of the ca 100 m wide stretch of land between the river and the Atlantic ocean, on the southside of the mouth of the river Nyong



Sample number 517553

Latitude 3,25658

Longitude 9,90501

Elevation 25 m

Entry type GPS

Sat. used 9

Sample date 10-03-2011

Geologist CKN

Material Sand

Sample type Soil sediment sample

Colour Rusty coloured

Sample weight 1,2 kg

Reduced weight 26 g

Sample depth 1-1,75 m

Vegetation Dense

Notes Same location as 517552

Close to the coast, opposite Malanda, at the mouth of the Nyong river.  
In the center of the ca 100 m wide stretch of land between the river and  
the Atlantic ocean, on the southside of the mouth of the river Nyong

Sample number	517554
Latitude	2,97395
Longitude	9,91425
Elevation	7 m
Entry type	GPS
Sat. used	11
Sample date	10-03-2011
Geologist	CKN
Material	Sand
Sample type	Soil sediment sample
Colour	Brown-grey
Sample weight	4,3 kg
Reduced weight	172 g
Sample depth	Sand from the beach
Vegetation	Sparse
Notes	Beach at Hotel Des Anges in Kribi



Sample number 517555

Latitude 3,77651  
Longitude 11,25553  
Elevation 688 m  
Entry type GPS  
Sat. used 9

Sample date 12-03-2011

Geologist MMEH

Material Sand with clay  
Sample type Soil sediment sample  
Colour Brown-gray  
Sample weight 2,3 kg  
Reduced weight 291 g  
Sample depth 0-1 m

Vegetation Dense

Notes Ebeba 2. Sandpit, alluvial terrace, basement dug up garnet-mica schist





Sample number 517556

Latitude 3,77651  
Longitude 11,25553  
Elevation 688 m  
Entry type GPS  
Sat. used 9

Sample date 12-03-2011

Geologist MMEH

Material Clay with sand  
Sample type Soil sediment sample  
Colour Brown-gray  
Sample weight 6,1 kg  
Reduced weight 320 g  
Sample depth 1-2 m

Vegetation Dense

Notes Ebeba 2. Sandpit, alluvial terrace, basement dug up garnet-mica schist



Sample number 517557

Latitude 3,57790  
Longitude 11,30564  
Elevation 670 m  
Entry type GPS  
Sat. used 7

Sample date 12-03-2011

Geologist MMEH

Material Sand  
Sample type Soil sediment sample  
Colour Brown-gray  
Sample weight 4,5 kg  
Reduced weight 69 g  
Sample depth 0-1 m

Vegetation Dense

Notes Nkongzok 1, alluvial terrace, sandpit



Sample number 517558

Latitude 3,57790  
Longitude 11,30564  
Elevation 670 m  
Entry type GPS  
Sat. used 7

Sample date 12-03-2011

Geologist MMEH

Material Sand with clay  
Sample type Soil sediment sample  
Colour Light grey to white  
Sample weight 4,6 kg  
Reduced weight 81 g  
Sample depth 1-2 m

Vegetation Dense

Notes Nkongzok 1, alluvial terrace, sandpit



Sample number 517559

Latitude 3,57790  
Longitude 11,30564  
Elevation 670 m  
Entry type GPS  
Sat. used 7

Sample date 12-03-2011

Geologist MMEH

Material Clay with sand  
Sample type Soil sediment sample  
Colour Brown-gray  
Sample weight 5,6 kg  
Reduced weight 61 g  
Sample depth 2-3 m

Vegetation Dense

Notes Nkongzok 1, alluvial terrace, sandpit



Sample number 517560

Latitude 3,57790  
Longitude 11,30564  
Elevation 670 m  
Entry type GPS  
Sat. used 7

Sample date 12-03-2011

Geologist MMEH

Material Clay with sand  
Sample type Soil sediment sample  
Colour Rusty coloured  
Sample weight 5,0 kg  
Reduced weight 47 g  
Sample depth 3-3,5 m

Vegetation Dense

Notes Nkongzok 1, alluvial terrace, sandpit





Sample number 517561

Latitude 3,49531  
Longitude 11,43477  
Elevation 685 m  
Entry type GPS  
Sat. used 5

Sample date 13-03-2011

Geologist MMEH

Material Sand with clay  
Sample type Soil sediment sample  
Colour Brown-gray  
Sample weight 4,7 kg  
Reduced weight 95 g  
Sample depth 0-1 m

Vegetation Dense

Notes Okode 2, sandpit



Sample number 517562

Latitude 3,49531  
Longitude 11,43477  
Elevation 685 m  
Entry type GPS  
Sat. used 5

Sample date 13-03-2011

Geologist MMEH

Material Clay with sand  
Sample type Soil sediment sample  
Colour Gray  
Sample weight 8,9 kg  
Reduced weight - g  
Sample depth 1-2 m

Vegetation Dense

Notes Okode 2, sandpit



Sample number 517563

Latitude 3,49531  
Longitude 11,43477  
Elevation 685 m  
Entry type GPS  
Sat. used 5

Sample date 13-03-2011

Geologist MMEH

Material Clay with sand (muscovite)  
Sample type Soil sediment sample  
Colour Grey  
Sample weight 6,7 kg  
Reduced weight 155 g  
Sample depth 2-3 m

Vegetation Dense

Notes Okode 2, sandpit



Sample number 517564

Latitude 3,47274  
Longitude 11,31860  
Elevation 663 m  
Entry type GPS  
Sat. used 9

Sample date 13-03-2011

Geologist MMEH

Material Fine sand  
Sample type Soil sediment sample  
Colour Rusty coloured  
Sample weight 4,6 kg  
Reduced weight 35 g  
Sample depth 0-1 m

Vegetation Dense

Notes Nfida 1, sandpit, alluvial terrace



Sample number 517565

Latitude 3,47274  
Longitude 11,31860  
Elevation 663 m  
Entry type GPS  
Sat. used 9

Sample date 13-03-2011

Geologist MMEH

Material Fine sand/silt  
Sample type Soil sediment sample  
Colour Rusty coloured  
Sample weight 4,6 kg  
Reduced weight 29 g  
Sample depth 1-2 m

Vegetation Dense

Notes Nfida 1, sandpit, alluvial terrace





Sample number 517566

Latitude 3,47274  
Longitude 11,31860  
Elevation 663 m  
Entry type GPS  
Sat. used 9

Sample date 13-03-2011

Geologist MMEH

Material Fine sand  
Sample type Soil sediment sample  
Colour Rusty coloured  
Sample weight 5,9 kg  
Reduced weight 45 g  
Sample depth 2-3 m

Vegetation Dense

Notes Nfida 1, sandpit, alluvial terrace



Sample number 517567

Latitude 3,55391  
Longitude 11,04425  
Elevation 639 m  
Entry type GPS  
Sat. used 8

Sample date 14-03-2011

Geologist MMEH

Material Top sand, bottom sand with coarse gravel  
Sample type Soil sediment sample  
Colour Brown gray  
Sample weight 8,8 kg  
Reduced weight 176 g  
Sample depth 0-1 m

Vegetation Dense

Notes Makube, sandpit. Sample dug from sandpit, no drilling possible because of coarse gravel.

Sample number 517568

Latitude 3,60681  
Longitude 10,97159  
Elevation 592 m  
Entry type GPS  
Sat. used 7

Sample date 14-03-2011

Geologist MMEH

Material Coarse sand with big garnets  
Sample type Soil sediment sample  
Colour Rusty coloured  
Sample weight 8,3 kg  
Reduced weight 109 g  
Sample depth 0-1 m

Vegetation Dense

Notes Ngwate, sandpit at the river Ngwate. Bedrock in 1 meter

Sample number 517569

Latitude 3,52812  
Longitude 11,11393  
Elevation 651 m  
Entry type GPS  
Sat. used 8

Sample date 14-03-2011

Geologist MMEH

Material Fine sand  
Sample type Soil sediment sample  
Colour Grey  
Sample weight 3,0 kg  
Reduced weight 148 g  
Sample depth 0-1 m

Vegetation Dense

Notes Malombo, alluvial terrace at the river Nyong

Sample number 517570

Latitude 3,52812  
Longitude 11,11393  
Elevation 651 m  
Entry type GPS  
Sat. used 8

Sample date 14-03-2011

Geologist MMEH

Material Fine sand with organic material  
Sample type Soil sediment sample  
Colour Grey  
Sample weight 1,9 kg  
Reduced weight 200 g  
Sample depth 1-2 m

Vegetation Dense

Notes Malombo, alluvial terrace at the river Nyong

Sample number 517571

Latitude 3,58716  
Longitude 11,12132  
Elevation 660 m  
Entry type GPS  
Sat. used 9

Sample date 14-03-2011

Geologist MMEH

Material Sand  
Sample type Soil sediment sample  
Colour Rusty coloured  
Sample weight 6,7 kg  
Reduced weight 64 g  
Sample depth 0-0,5 m

Vegetation Dense

Notes Hondol, alluvial terrace

Sample number 517572

Latitude 3,73346  
Longitude 11,18528  
Elevation 715 m  
Entry type GPS  
Sat. used 6

Sample date 14-03-2011

Geologist MMEH

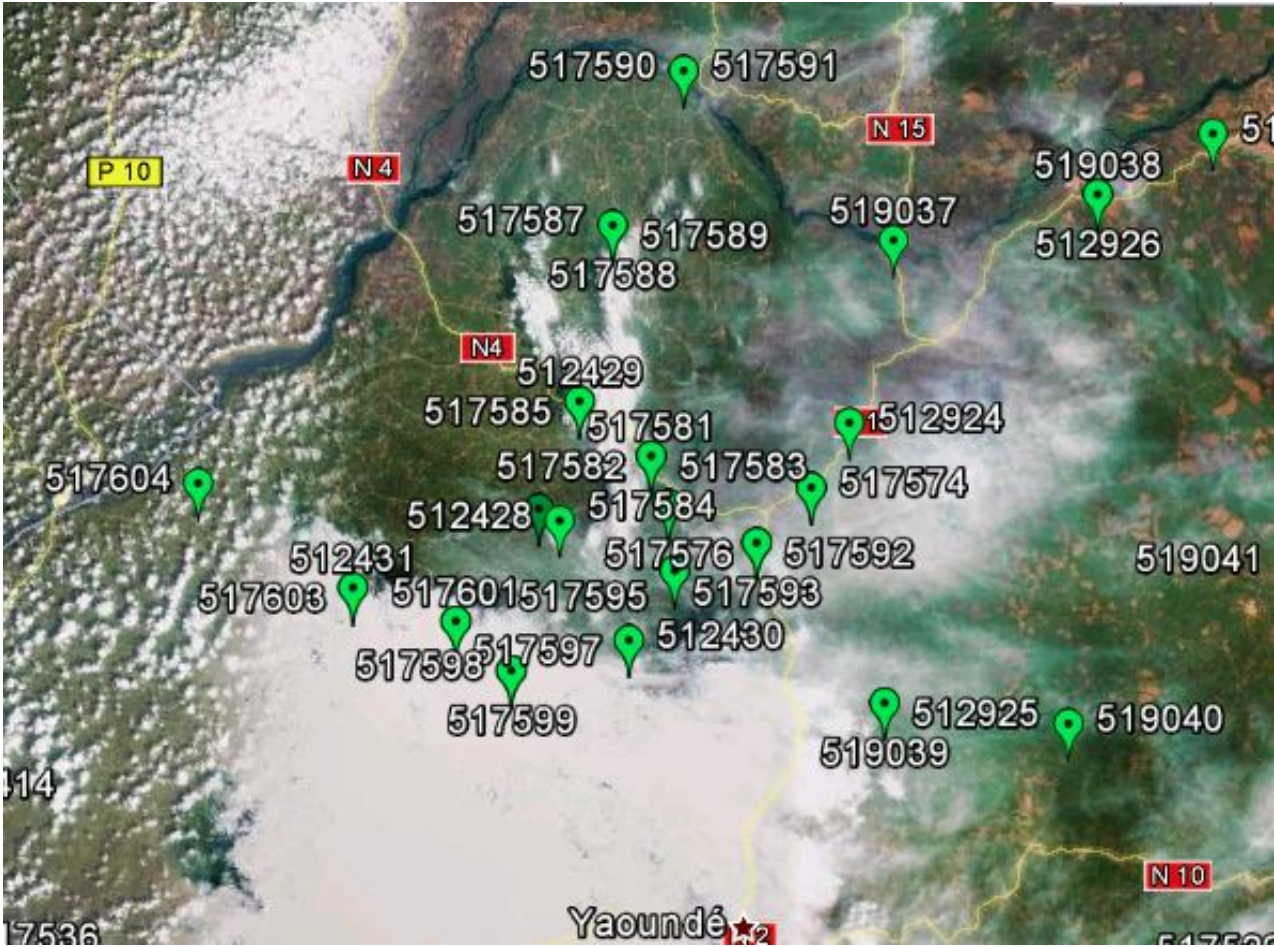
Material Clay with sand  
Sample type Soil sediment sample  
Colour Brown-grey  
Sample weight 8,0 kg  
Reduced weight 190 g  
Sample depth 0-1 m

Vegetation Dense

Notes Mambine, river Mbohe, alluvial terrace

Sample number	517573
Latitude	3,73346
Longitude	11,18528
Elevation	715 m
Entry type	GPS
Sat. used	6
Sample date	14-03-2011
Geologist	MMEH
Material	Clay with sand
Sample type	Soil sediment sample
Colour	Brown-grey
Sample weight	6,2 kg
Reduced weight	141 g
Sample depth	1-2 m
Vegetation	Dense
Notes	Mambine, river Mbohe, alluvial terrace





Sample number 517574

Latitude 4,17496  
Longitude 11,56649  
Elevation 552 m  
Entry type GPS  
Sat. used 7

Sample date 16-03-2011

Geologist MMEH

Material Fine sand progressing into clay at the bottom  
Sample type Soil sediment sample  
Colour Rusty coloured  
Sample weight 3,3 kg  
Reduced weight 60 g  
Sample depth 0-1 m

Vegetation Dense

Notes Minkama, sandpit, alluvial terrace, river Afamba

Sample number 517575

Latitude 4,17496  
Longitude 11,56649  
Elevation 552 m  
Entry type GPS  
Sat. used 7

Sample date 16-03-2011

Geologist MMEH

Material Clay with sand progressing to sand at the bottom  
Sample type Soil sediment sample  
Colour Rusty coloured  
Sample weight 2,1 kg  
Reduced weight 29 g  
Sample depth 1-2 m

Vegetation Dense

Notes Minkama, sandpit, alluvial terrace, river Afamba

Sample number 517576

Latitude 4,16293  
Longitude 11,46292  
Elevation 560 m  
Entry type GPS  
Sat. used 6

Sample date 16-03-2011

Geologist MMEH

Material Sand  
Sample type Soil sediment sample  
Colour Grey  
Sample weight 2,8 kg  
Reduced weight 78 g  
Sample depth 0-1 m

Vegetation Dense

Notes Ntsan, alluvial terrace

Sample number 517577

Latitude 4,16293  
Longitude 11,46292  
Elevation 560 m  
Entry type GPS  
Sat. used 6

Sample date 16-03-2011

Geologist MMEH

Material Sand with clay  
Sample type Soil sediment sample  
Colour Grey  
Sample weight 4,0 kg  
Reduced weight 112 g  
Sample depth 1-2 m

Vegetation Dense

Notes Ntsan, alluvial terrace

Sample number 517578

Latitude 4,16293  
Longitude 11,46292  
Elevation 560 m  
Entry type GPS  
Sat. used 6

Sample date 16-03-2011

Geologist MMEH

Material Sand with clay  
Sample type Soil sediment sample  
Colour Brown-grey  
Sample weight 2,3 kg  
Reduced weight 19 g  
Sample depth 2-3 m

Vegetation Dense

Notes Ntsan, alluvial terrace

Sample number 517579

Latitude 4,15979  
Longitude 11,36913  
Elevation 530 m  
Entry type GPS  
Sat. used 10

Sample date 16-03-2011

Geologist MMEH

Material Fine sand with muscovite  
Sample type Soil sediment sample  
Colour Rusty coloured  
Sample weight 2,7 kg  
Reduced weight 214 g  
Sample depth 0-1 m

Vegetation Dense

Notes Eligfomo, at the river Lekie, alluvial terrace

Sample number	517580
Latitude	4,15979
Longitude	11,36913
Elevation	530 m
Entry type	GPS
Sat. used	10
Sample date	16-03-2011
Geologist	MMEH
Material	Clay with sand
Sample type	Soil sediment sample
Colour	Rusty coloured
Sample weight	2,4 kg
Reduced weight	250 g
Sample depth	1-2 m
Vegetation	Dense
Notes	Eligfomo, at the river Lekie, alluvial terrace



Sample number 517581

Latitude 4,19762  
Longitude 11,45049  
Elevation 572 m  
Entry type GPS  
Sat. used 8

Sample date 17-03-2011

Geologist MMEH

Material Sand  
Sample type Soil sediment sample  
Colour Rusty coloured  
Sample weight 1,5 kg  
Reduced weight 27 g  
Sample depth 0-1 m

Vegetation Dense

Notes Nkolewodo, Alluvial terrace



Sample number 517582

Latitude 4,19762  
Longitude 11,45049  
Elevation 572 m  
Entry type GPS  
Sat. used 8

Sample date 17-03-2011

Geologist MMEH

Material Sand with clay  
Sample type Soil sediment sample  
Colour Rusty coloured  
Sample weight 1,2 kg  
Reduced weight 27 g  
Sample depth 1-2 m

Vegetation Dense

Notes Nkolewodo, Alluvial terrace



Sample number 517583

Latitude 4,19762  
Longitude 11,45049  
Elevation 572 m  
Entry type GPS  
Sat. used 8

Sample date 17-03-2011

Geologist MMEH

Material Sand with clay  
Sample type Soil sediment sample  
Colour Rusty coloured  
Sample weight 2,6 kg  
Reduced weight 33 g  
Sample depth 2-3 m

Vegetation Dense

Notes Nkolewodo, Alluvial terrace

Sample number 517584

Latitude 4,19762  
Longitude 11,45049  
Elevation 572 m  
Entry type GPS  
Sat. used 8

Sample date 17-03-2011

Geologist MMEH

Material Sand with clay  
Sample type Soil sediment sample  
Colour Rusty coloured  
Sample weight 3,3 kg  
Reduced weight 397 g  
Sample depth 3-4 m

Vegetation Dense

Notes Nkolewodo, Alluvial terrace

Sample number 517585

Latitude 4,23706  
Longitude 11,39848  
Elevation 514 m  
Entry type GPS  
Sat. used 8

Sample date 17-03-2011

Geologist MMEH

Material Sand with clay  
Sample type Soil sediment sample  
Colour Rusty coloured  
Sample weight 2,3 kg  
Reduced weight 212 g  
Sample depth 0-1 m

Vegetation Dense

Notes Nkomo, alluvial terrace

Sample number 517586

Latitude 4,23706  
Longitude 11,39848  
Elevation 514 m  
Entry type GPS  
Sat. used 8

Sample date 17-03-2011

Geologist MMEH

Material Sand with clay  
Sample type Soil sediment sample  
Colour Brown-grey  
Sample weight 1,3 kg  
Reduced weight 518 g  
Sample depth 0-1 m

Vegetation Dense

Notes Nkomo, alluvial terrace

Sample number 517587

Latitude 4,36358  
Longitude 11,42265  
Elevation 550 m  
Entry type GPS  
Sat. used 8

Sample date 17-03-2011

Geologist MMEH

Material Clay with sand and organic material  
Sample type Soil sediment sample  
Colour Brown-grey  
Sample weight 1,7 kg  
Reduced weight 77 g  
Sample depth 0-1 m

Vegetation Dense

Notes Abanzina, alluvial terrace





Sample number 517588

Latitude 4,36358  
Longitude 11,42265  
Elevation 550 m  
Entry type GPS  
Sat. used 8

Sample date 17-03-2011

Geologist MMEH

Material Clay with sand  
Sample type Soil sediment sample  
Colour Brown-grey  
Sample weight 0,8 kg  
Reduced weight 171 g  
Sample depth 1-2 m

Vegetation Dense

Notes Abanzina, alluvial terrace

Sample number 517589

Latitude 4,36358  
Longitude 11,42265  
Elevation 550 m  
Entry type GPS  
Sat. used 8

Sample date 17-03-2011

Geologist MMEH

Material Clay with sand  
Sample type Soil sediment sample  
Colour Brown-grey  
Sample weight 0,9 kg  
Reduced weight 131 g  
Sample depth 2-3 m

Vegetation Dense

Notes Abanzina, alluvial terrace

Sample number 517590

Latitude 4,47476  
Longitude 11,47410  
Elevation 423 m  
Entry type GPS  
Sat. used 9

Sample date 17-03-2011

Geologist MMEH

Material Sand  
Sample type Soil sediment sample  
Colour Dark brown to black  
Sample weight 2,6 kg  
Reduced weight 405 g  
Sample depth 0-1 m

Vegetation Dense

Notes Senaga, at the river Mbanga, alluvial terrace

Sample number 517591

Latitude 4,47476  
Longitude 11,47410  
Elevation 423 m  
Entry type GPS  
Sat. used 9

Sample date 17-03-2011

Geologist MMEH

Material Sand  
Sample type Soil sediment sample  
Colour Dark brown to black  
Sample weight 1,3 kg  
Reduced weight 449 g  
Sample depth 1-2 m

Vegetation Dense

Notes Senaga, at the river Mbanga, alluvial terrace

Sample number 517592

Latitude 4,13544  
Longitude 11,52680  
Elevation 549 m  
Entry type GPS  
Sat. used 8

Sample date 18-03-2011

Geologist MMEH

Material Clay with sand  
Sample type Soil sediment sample  
Colour Rusty coloured  
Sample weight 2,0 kg  
Reduced weight 48 g  
Sample depth 0-1 m

Vegetation Dense

Notes Nkolmelen, alluvial terrace



Sample number 517593

Latitude 4,13544  
Longitude 11,52680  
Elevation 549 m  
Entry type GPS  
Sat. used 8

Sample date 18-03-2011

Geologist MMEH

Material Sand/silt  
Sample type Soil sediment sample  
Colour Rusty coloured  
Sample weight 2,2 kg  
Reduced weight 57 g  
Sample depth 1-2 m

Vegetation Dense

Notes Nkolmelen, alluvial terrace



Sample number 517594

Latitude 4,13544  
Longitude 11,52680  
Elevation 549 m  
Entry type GPS  
Sat. used 8

Sample date 18-03-2011

Geologist MMEH

Material Clay with sand  
Sample type Soil sediment sample  
Colour Brown-grey  
Sample weight 5,5 kg  
Reduced weight 69 g  
Sample depth 2-3 m

Vegetation Dense

Notes Nkolmelen, alluvial terrace

Sample number 517595

Latitude 4,11538  
Longitude 11,46743  
Elevation 599 m  
Entry type GPS  
Sat. used 7

Sample date 18-03-2011

Geologist MMEH

Material Sand with clay  
Sample type Soil sediment sample  
Colour Rusty coloured  
Sample weight 1,0 kg  
Reduced weight 95 g  
Sample depth 0-1 m

Vegetation Dense

Notes Edinding, alluvial terrace



Sample number 517596

Latitude 4,11538  
Longitude 11,46743  
Elevation 599 m  
Entry type GPS  
Sat. used 7

Sample date 18-03-2011

Geologist MMEH

Material Sand  
Sample type Soil sediment sample  
Colour Brown-grey  
Sample weight 1,3 kg  
Reduced weight 140 g  
Sample depth 2-3 m

Vegetation Dense

Notes Edinding, alluvial terrace

Sample number 517597

Latitude 4,06539  
Longitude 11,43424  
Elevation 620 m  
Entry type GPS  
Sat. used 7

Sample date 18-03-2011

Geologist MMEH

Material Sand  
Sample type Soil sediment sample  
Colour Rusty coloured  
Sample weight 6,4 kg  
Reduced weight 76 g  
Sample depth 0-1 m

Vegetation Dense

Notes Mvoua, at the river Yegue, bedrock exposed in the river, approximately 1 m sediment deposited over it.

Sample number 517598

Latitude 4,04356  
Longitude 11,34916  
Elevation 576 m  
Entry type GPS  
Sat. used 8

Sample date 18-03-2011

Geologist MMEH

Material Sand  
Sample type Soil sediment sample  
Colour Grey  
Sample weight 2,4 kg  
Reduced weight 10 g  
Sample depth 0-1 m

Vegetation Dense

Notes Mvaa 1, sandpit, alluvial terrace

Sample number 517599

Latitude 4,04356  
Longitude 11,34916  
Elevation 576 m  
Entry type GPS  
Sat. used 8

Sample date 18-03-2011

Geologist MMEH

Material Sand with clay, layer of gravel in 1,5 m. then sand containing significant amounts of muscovite  
Sample type Soil sediment sample  
Colour Grey  
Sample weight 4,8 kg  
Reduced weight 32 g  
Sample depth 1-2 m

Vegetation Dense

Notes Mvaa 1, sandpit, alluvial terrace

Sample number 517600

Latitude 4,04356  
Longitude 11,34916  
Elevation 576 m  
Entry type GPS  
Sat. used 8

Sample date 18-03-2011

Geologist MMEH

Material Sand with muscovite and kaolin  
Sample type Soil sediment sample  
Colour Light grey to white  
Sample weight 4,4 kg  
Reduced weight 61 g  
Sample depth 0-1 m

Vegetation Dense

Notes Mvaa 1, sandpit, alluvial terrace

Sample number 517601

Latitude 4,07896  
Longitude 11,30909  
Elevation 566 m  
Entry type GPS  
Sat. used 8

Sample date 19-03-2011

Geologist MMEH

Material Sand with clay  
Sample type Soil sediment sample  
Colour Grey  
Sample weight 3,5 kg  
Reduced weight 158 g  
Sample depth 0-1 m

Vegetation Dense

Notes Ekakam 2, alluvial terrace

Sample number 517602

Latitude 4,07896  
Longitude 11,30909  
Elevation 566 m  
Entry type GPS  
Sat. used 8

Sample date 19-03-2011

Geologist MMEH

Material Sand with clay  
Sample type Soil sediment sample  
Colour Grey  
Sample weight 0,2 kg  
Reduced weight 74 g  
Sample depth 1-2 m

Vegetation Dense

Notes Ekakam 2, alluvial terrace

Sample number 517603

Latitude 4,10311  
Longitude 11,23453  
Elevation 467 m  
Entry type GPS  
Sat. used 8

Sample date 19-03-2011

Geologist MMEH

Material Sand  
Sample type Soil sediment sample  
Colour Grey  
Sample weight 3,3 kg dry  
Reduced weight 80 g  
Sample depth 1 meter exposed on top of bedrock

Vegetation Dense

Notes The river Angobo

Sample number	517604
Latitude	4,17803
Longitude	11,12211
Elevation	386 m
Entry type	GPS
Sat. used	10
Sample date	19-03-2011
Geologist	MMEH
Material	Sand
Sample type	Soil sediment sample
Colour	Grey
Sample weight	3,9 kg
Reduced weight	347 g
Sample depth	0-1 m
Vegetation	Dense
Notes	Eyen Meyong, alluvial terrace





Sample number 517605

Latitude 3,15965  
Longitude 10,02155  
Elevation 23 m  
Entry type GPS  
Sat. used 4

Sample date 21-03-2011

Geologist MMEH

Material Sand with clay  
Sample type Soil sediment sample  
Colour Rusty coloured  
Sample weight 1,1 kg  
Reduced weight 16 g  
Sample depth 0-1 m

Vegetation Dense

Notes The river Nvige, alluvial terrace



Sample number 517606

Latitude 3,15965  
Longitude 10,02155  
Elevation 23 m  
Entry type GPS  
Sat. used 4

Sample date 21-03-2011

Geologist MMEH

Material Sand, from 1,5 m sand with gravel  
Sample type Soil sediment sample  
Colour Brown-grey  
Sample weight 2,1 kg  
Reduced weight 78 g  
Sample depth 1-2 m

Vegetation Dense

Notes Same location as 517605  
The river Nvige, alluvial terrace

Sample number 517607

Latitude 3,14165  
Longitude 9,95169  
Elevation 20 m  
Entry type GPS  
Sat. used 8

Sample date 22-03-2011

Geologist MMEH

Material Sand  
Sample type Soil sediment sample  
Colour Rusty coloured  
Sample weight 1,5 kg  
Reduced weight 100 g  
Sample depth 0-1 m

Vegetation Dense

Notes Overwashfane north of Kribi

Sample number 517608

Latitude 3,14165  
Longitude 9,95169  
Elevation 20 m  
Entry type GPS  
Sat. used 8

Sample date 22-03-2011

Geologist MMEH

Material Sand  
Sample type Soil sediment sample  
Colour Brown-grey  
Sample weight 3,4 kg  
Reduced weight 246 g  
Sample depth 1-2 m

Vegetation Dense

Notes Overwashfane north of Kribi

Sample number 517609

Latitude 3,14165  
Longitude 9,95169  
Elevation 20 m  
Entry type GPS  
Sat. used 8

Sample date 22-03-2011

Geologist MMEH

Material Sand  
Sample type Soil sediment sample  
Colour Grey  
Sample weight 1,9 kg  
Reduced weight 50 g  
Sample depth 0-1 m

Vegetation Dense

Notes Overwashfane north of Kribi  
Sample taken app 40 meters inland from 517607 and 08

Sample number 517610

Latitude 3,12872  
Longitude 9,95831  
Elevation 27 m  
Entry type GPS  
Sat. used 10

Sample date 22-03-2011

Geologist MMEH

Material Sand  
Sample type Soil sediment sample  
Colour Rusty coloured  
Sample weight 3,7 kg  
Reduced weight 89 g  
Sample depth 0-1 m

Vegetation Sparse

Notes Overwashfane north of Kribi

Sample number 517611

Latitude 3,12872  
Longitude 9,95831  
Elevation 27 m  
Entry type GPS  
Sat. used 10

Sample date 22-03-2011

Geologist MMEH

Material Sand  
Sample type Soil sediment sample  
Colour Rusty coloured  
Sample weight 3,5 kg  
Reduced weight 114 g  
Sample depth 1-2 m

Vegetation Sparse

Notes Overwashfane north of Kribi

Sample number	517612
Latitude	3,12881
Longitude	9,95866
Elevation	21 m
Entry type	GPS
Sat. used	10
Sample date	22-03-2011
Geologist	MMEH
Material	Sand
Sample type	Soil sediment sample
Colour	Rusty coloured
Sample weight	3,0 kg
Reduced weight	34 g
Sample depth	0-1 m
Vegetation	Sparse
Notes	Overwashfane north of Kribi Backside of the overwashfane/edge of hinterland basin

Sample number 517613

Latitude 3,11776  
Longitude 9,96374  
Elevation 27 m  
Entry type GPS  
Sat. used 11

Sample date 22-03-2011

Geologist MMEH

Material Sand  
Sample type Soil sediment sample  
Colour Rusty coloured  
Sample weight 6,0 kg  
Reduced weight 45 g  
Sample depth 0-1 m

Vegetation Sparse

Notes Overwashfane north of Kribi  
On top of the overwashfane

Sample number 517614

Latitude 3,38321  
Longitude 10,10487  
Elevation 72 m  
Entry type GPS  
Sat. used 8

Sample date 22-03-2011

Geologist MMEH

Material Sand with clay  
Sample type Soil sediment sample  
Colour Rusty coloured  
Sample weight 0,5 kg  
Reduced weight 59 g  
Sample depth 0-1 m

Vegetation Dense

Notes Mbape, alluvial terrace



Sample number 517615

Latitude 3,38321  
Longitude 10,10487  
Elevation 72 m  
Entry type GPS  
Sat. used 8

Sample date 22-03-2011

Geologist MMEH

Material Sand with clay, a layer of gravel in app 1,5 m  
Sample type Soil sediment sample  
Colour Brown-grey  
Sample weight 4,9 kg  
Reduced weight 133 g  
Sample depth 1-2 m

Vegetation Dense

Notes Mbape, alluvial terrace

Sample number 517616

Latitude 3,38321  
Longitude 10,10487  
Elevation 72 m  
Entry type GPS  
Sat. used 9

Sample date 23-03-2011

Geologist MMEH

Material Sand with clay and gravel  
Sample type Soil sediment sample  
Colour Brown-grey  
Sample weight 2,4 kg  
Reduced weight 105 g  
Sample depth 0-1 m

Vegetation Dense

Notes Mbebe, alluvial terrace

Sample number	517617
Latitude	3,38321
Longitude	10,10487
Elevation	72 m
Entry type	GPS
Sat. used	9
Sample date	23-03-2011
Geologist	MMEH
Material	Sand with clay
Sample type	Soil sediment sample
Colour	Rusty coloured
Sample weight	5,5 kg
Reduced weight	132 g
Sample depth	1-2 m
Vegetation	Dense
Notes	Mbebe, alluvial terrace

Sample number 517618

Latitude 3,43810  
Longitude 10,12902  
Elevation 78 m  
Entry type GPS  
Sat. used 8

Sample date 23-03-2011

Geologist MMEH

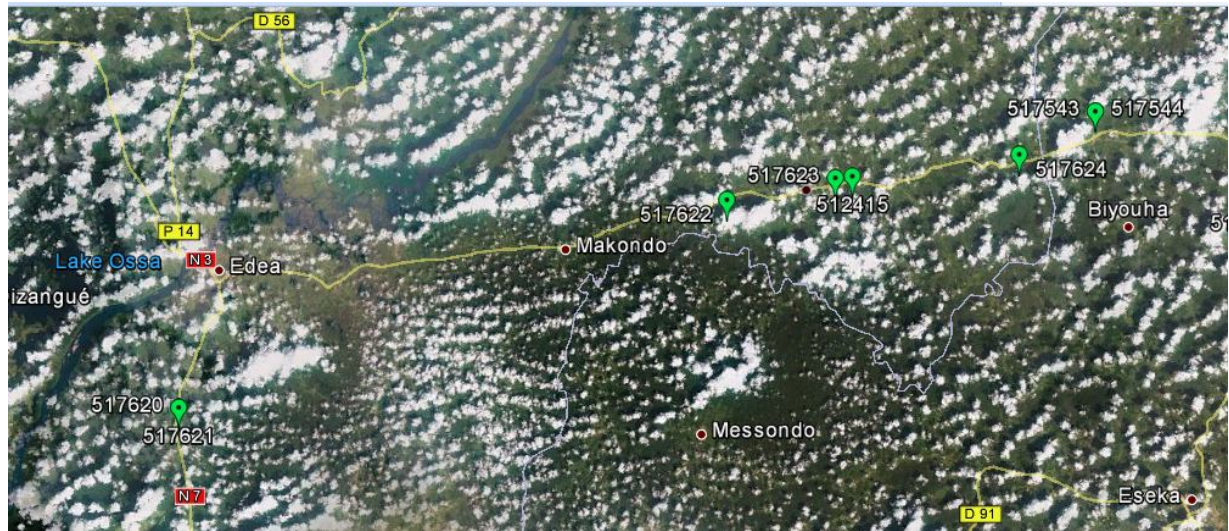
Material Sand  
Sample type Soil sediment sample  
Colour Light grey to white  
Sample weight 1,9 kg  
Reduced weight 64 g  
Sample depth 0-1 m

Vegetation Dense

Notes Elogbatindi



Sample number	517619
Latitude	3,43810
Longitude	10,12902
Elevation	78 m
Entry type	GPS
Sat. used	8
Sample date	23-03-2011
Geologist	MMEH
Material	Sand with clay
Sample type	Soil sediment sample
Colour	Light grey to white
Sample weight	4,5 kg
Reduced weight	51 g
Sample depth	1-2 m
Vegetation	Dense
Notes	Same location as 517618 Elogbatindi



Sample number 517620

Latitude 3,70562  
Longitude 10,10722  
Elevation 57 m  
Entry type GPS  
Sat. used 9

Sample date 23-03-2011

Geologist MMEH

Material Sand  
Sample type Soil sediment sample  
Colour Brown-grey  
Sample weight 1,0 kg  
Reduced weight 54 g  
Sample depth 0-1 m

Vegetation Dense

Notes Alluvial terrace

Sample number 517621

Latitude 3,70562  
Longitude 10,10722  
Elevation 57 m  
Entry type GPS  
Sat. used 9

Sample date 23-03-2011

Geologist MMEH

Material Sand  
Sample type Soil sediment sample  
Colour Rusty coloured  
Sample weight 6,4 kg  
Reduced weight 138 g  
Sample depth 1-2 m

Vegetation Dense

Notes Alluvial terrace



Sample number 517622

Latitude 3,84276  
Longitude 10,46912  
Elevation 129 m  
Entry type GPS  
Sat. used 9

Sample date 24-03-2011

Geologist MMEH

Material Fine sand  
Sample type Soil sediment sample  
Colour Rusty coloured  
Sample weight 5,3 kg  
Reduced weight 87 g  
Sample depth 0-0,5 m

Vegetation Dense

Notes Small alluvial terrace on top of bedrock

Sample number 517623

Latitude 3,85721  
Longitude 10,54057  
Elevation 57 m  
Entry type GPS  
Sat. used 9

Sample date 24-03-2011

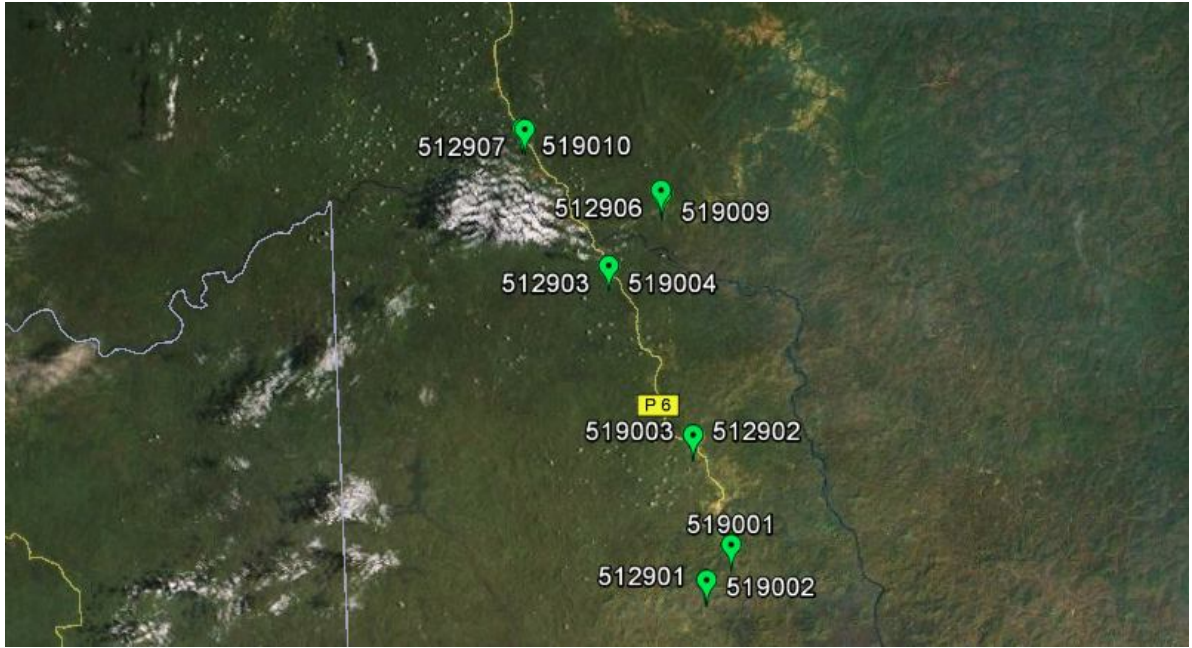
Geologist MMEH

Material Sand with clay  
Sample type Soil sediment sample  
Colour Light grey to white  
Sample weight 3,2 kg  
Reduced weight 95 g  
Sample depth 0-1 m

Vegetation Dense

Notes

Sample number	517624
Latitude	3,87289
Longitude	10,66185
Elevation	216 m
Entry type	GPS
Sat. used	8
Sample date	24-03-2011
Geologist	MMEH
Material	Sand
Sample type	Soil sediment sample
Colour	Rusty coloured
Sample weight	1,3 kg
Reduced weight	35 g
Sample depth	0-1 m
Vegetation	Dense
Notes	Ndoupe, at the bank of the river 1 meter sediment them beadrock



Sample number 519001  
Latitude 2,58713  
Longitude 14,0375  
Elevation 542 m  
Entry type GPS  
Sample date 04-03-2011  
Geologist KB  
Sampletype Soil sediment sample  
Locality Adjela  
Subdivision Ngoïla  
Country rock Metaplutonite (metagabbro)  
Sample weight 26,6 kg

Sample number 519002  
Latitude 2,55329  
Longitude 14,014  
Elevation 555 m  
Entry type GPS  
Sample date 04-03-2011  
Geologist KB  
Sampletype Soil sediment sample  
Locality Bareko  
Subdivision Ngoïla  
Country rock Metaplutonite (metagabbro)  
Sample weight 33 kg

Sample number 519003  
Latitude 2,69217  
Longitude 14,0012  
Elevation 571 m  
Entry type GPS  
Sample date 04-03-2011  
Geologist KB  
Sampletype Soil sediment sample  
Locality Etekessang  
Subdivision Ngoïla  
Country rock Amphibolite  
Sample weight 24 kg

Sample number 519004  
Latitude 2,85432  
Longitude 13,9209  
Elevation 562 m  
Entry type GPS  
Sample date 04-03-2011  
Geologist KB  
Sampletype Soil sediment sample  
Locality Zoulabot  
Subdivision Lomié  
Country rock Chlorite schist  
Sample weight 22,7 kg





Sample number 519005  
Latitude 3,15209  
Longitude 13,778  
Elevation 592 m  
Entry type GPS  
Sample date 05-03-2011  
Geologist KB  
Sampletype Soil sediment sample  
Locality Eschiembor  
Subdivision Lomié  
Country rock Chlorite schist  
Sample weight 34,5 kg

Sample number 519006  
Latitude 3,1946  
Longitude 13,9198  
Elevation 629 m  
Entry type GPS  
Sample date 05-03-2011  
Geologist KB  
Sampletype Soil sediment sample  
Locality Ntam  
Subdivision Lomié  
Country rock Garnet micaschist  
Sample weight 29,5 kg

Sample number 519007  
Latitude 3,31253  
Longitude 14,0781  
Elevation 568 m  
Entry type GPS  
Sample date 05-03-2011  
Geologist KB  
Sampletype Soil sediment sample  
Locality Mpan Kobera  
Subdivision Lomié  
Country rock Serpentinised peridotite  
Sample weight 25 kg

Sample number 519008  
Latitude 3,18301  
Longitude 13,8409  
Elevation 624 m  
Entry type GPS  
Sample date 05-03-2011  
Geologist KB  
Sampletype Soil sediment sample  
Locality Kongo  
Subdivision Lomié  
Country rock Chlorite schist  
Sample weight 27 kg

Sample number 519009  
Latitude 2,92237  
Longitude 13,9718  
Elevation 580 m  
Entry type GPS  
Sample date 06-03-2011  
Geologist KB  
Sampletype Soil sediment sample  
Locality Massens  
Subdivision Messok  
Country rock Metagabbro  
Sample weight 24,9 kg

Sample number 519010  
Latitude 2,98592  
Longitude 13,8385  
Elevation 582 m  
Entry type GPS  
Sample date 06-03-2011  
Geologist KB  
Sampletype Soil sediment sample  
Locality Karagoua  
Subdivision Lomié  
Country rock Chlorite schist  
Sample weight 31,6 kg

Sample number 519011  
Latitude 3,14436  
Longitude 13,6446  
Elevation 607 m  
Entry type GPS  
Sample date 06-03-2011  
Geologist KB  
Sampletype Soil sediment sample  
Locality Pouempoum  
Subdivision Lomié  
Country rock Garnet micaschist  
Sample weight 10 kg

Sample number 519012  
Latitude 3,19325  
Longitude 13,6293  
Elevation 600 m  
Entry type GPS  
Sample date 07-03-2011  
Geologist KB  
Sampletype Soil sediment sample  
Locality Bingongol 1  
Subdivision Lomié  
Country rock Garnet micaschist  
Sample weight 30,2 kg

Sample number 519013  
Latitude 3,36923  
Longitude 13,5696  
Elevation 681 m  
Entry type GPS  
Sample date 07-03-2011  
Geologist KB  
Sampletype Soil sediment sample  
Locality Bapilé  
Subdivision Lomié  
Country rock Garnet micaschist  
Sample weight 33,6 kg

Sample number 519014  
Latitude 3,4978  
Longitude 13,4529  
Elevation 714 m  
Entry type GPS  
Sample date 07-03-2011  
Geologist KB  
Sampletype Soil sediment sample  
Locality Diassa  
Subdivision Mindourou  
Country rock Garnet micaschist  
Sample weight 22,6 kg

Sample number	519015
Latitude	3,63862
Longitude	13,3743
Elevation	687 m
Entry type	GPS
Sample date	08-03-2011
Geologist	KB
Sampletype	Soil sediment sample
Locality	Bedoumo
Subdivision	Abong Mbang
Country rock	Garnet micaschist
Sample weight	32,5 kg



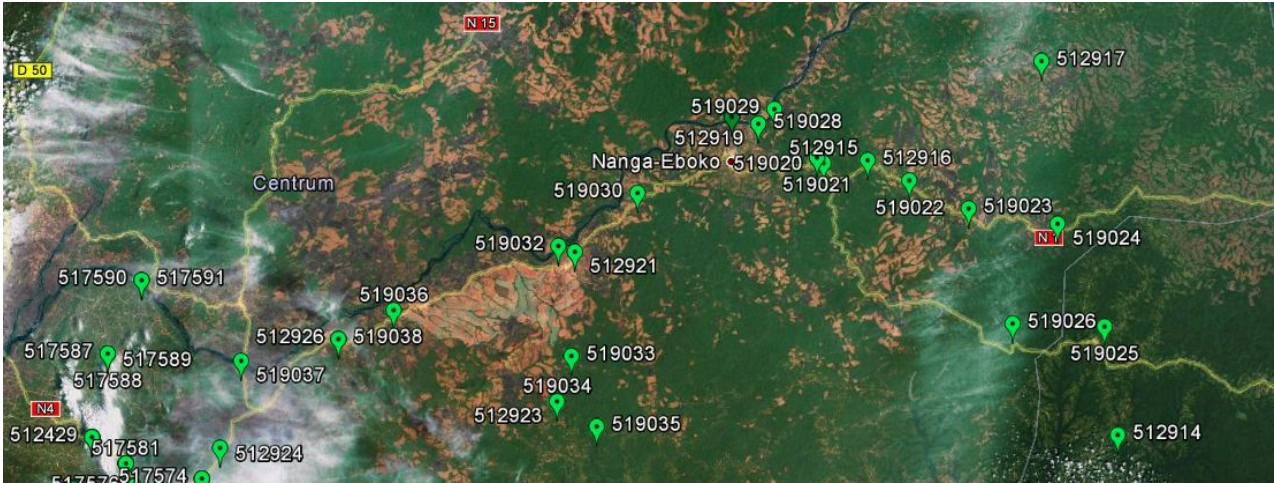


Sample number 519016  
Latitude 3,76033  
Longitude 13,5897  
Elevation 745 m  
Entry type GPS  
Sample date 08-03-2011  
Geologist KB  
Sampletype Soil sediment sample  
Locality Kagnol  
Subdivision Abong Mbang  
Country rock Garnet micaschist  
Sample weight 32 kg

Sample number 519017  
Latitude 4,0694  
Longitude 13,2323  
Elevation 630 m  
Entry type GPS  
Sample date 09-03-2011  
Geologist KB  
Sampletype Soil sediment sample  
Locality Djendé 2  
Subdivision Abong Mbang  
Country rock Garnet micaschist  
Sample weight 41 kg

Sample number 519018  
Latitude 4,01346  
Longitude 13,0688  
Elevation 671 m  
Entry type GPS  
Sample date 10-03-2011  
Geologist KB  
Sampletype Soil sediment sample  
Locality Bamako  
Subdivision Abong Mbang  
Country rock Micaceous gneiss  
Sample weight 22 kg

Sample number 519019  
Latitude 3,941  
Longitude 12,7878  
Elevation 651 m  
Entry type GPS  
Sample date 10-03-2011  
Geologist KB  
Sampletype Soil sediment sample  
Locality Mbama  
Subdivision Abong Mbang  
Country rock Micaceous gneiss  
Sample weight 13 kg



Sample number 519020  
Latitude 4,65995  
Longitude 12,5018  
Elevation 647 m  
Entry type GPS  
Sample date 13-03-2011  
Geologist KB  
Sampletype Soil sediment sample  
Locality Nkoambang  
Subdivision Nanga Ebogo  
Country rock Garnet micaschist  
Sample weight 7,7 kg  
Depth 20 cm

Sample number 519021  
Latitude 4,65995  
Longitude 12,5018  
Elevation 647 m  
Entry type GPS  
Sample date 13-03-2011  
Geologist KB  
Sampletype Soil sediment sample  
Locality Nkoambang  
Subdivision Nanga Ebogo  
Country rock Garnet micaschist  
Sample weight 6,4 kg  
Depth 30 cm

Sample number 519022  
Latitude 4,6253  
Longitude 12,6421  
Elevation 679 m  
Entry type GPS  
Sample date 13-03-2011  
Geologist KB  
Sampletype Soil sediment sample  
Locality Berkong  
Subdivision Nanga Ebogo  
Country rock Garnet micaschist  
Sample weight 11 kg  
Depth 30 cm

Sample number 519023  
Latitude 4,58299  
Longitude 12,7324  
Elevation 639 m  
Entry type GPS  
Sample date 14-03-2011  
Geologist KB  
Sampletype Soil sediment sample  
Locality Elot  
Subdivision Nanga Ebogo  
Country rock Garnet micaschist  
Sample weight 7 kg  
Depth 30 cm



Sample number 519024  
Latitude 4,55991  
Longitude 12,8682  
Elevation 716 m  
Entry type GPS  
Sample date 14-03-2011  
Geologist KB  
Sampletype Soil sediment sample  
Locality Ekak  
Subdivision Minta  
Country rock Garnet micaschist  
Sample weight 11,2 kg  
Depth 30 cm

Sample number 519025  
Latitude 4,40471  
Longitude 12,9397  
Elevation 679 m  
Entry type GPS  
Sample date 14-03-2011  
Geologist KB  
Sampletype Soil sediment sample  
Locality Ka'a  
Subdivision Nanga Ebogo  
Country rock Garnet micaschist  
Sample weight 8 kg  
Depth 30 cm

Sample number 519026  
Latitude 4,40924  
Longitude 12,7994  
Elevation 708 m  
Entry type GPS  
Sample date 14-03-2011  
Geologist KB  
Sampletype Soil sediment sample  
Locality Ngo'o  
Subdivision Minta  
Country rock Amphibolite  
Sample weight 9 kg  
Depth 30 cm

Sample number 519027  
Latitude 4,72102  
Longitude 12,3726  
Elevation 585 m  
Entry type GPS  
Sample date 15-03-2011  
Geologist KB  
Sampletype Soil sediment sample  
Locality Bifogo  
Subdivision Nanga Ebogo  
Country rock Amphibolite  
Sample weight 5 kg  
Depth 110 cm

Sample number 519028  
Latitude 4,71073  
Longitude 12,4127  
Elevation 604 m  
Entry type GPS  
Sample date 15-03-2011  
Geologist KB  
Sampletype Soil sediment sample  
Locality Ndokoti  
Subdivision Nanga Ebogo  
Country rock Amphibolite  
Sample weight 5 kg  
Depth 30 cm

Sample number 519029  
Latitude 4,73302  
Longitude 12,4371  
Elevation 582 m  
Entry type GPS  
Sample date 15-03-2011  
Geologist KB  
Sampletype Soil sediment sample  
Locality  
Subdivision Nanga Ebogo  
Country rock ?  
Sample weight 13 kg  
Depth 30 cm

Sample number 519030  
Latitude 4,60641  
Longitude 12,2292  
Elevation 600 m  
Entry type GPS  
Sample date 15-03-2011  
Geologist KB  
Sampletype Soil sediment sample  
Locality Medjanmé  
Subdivision Nkoteng  
Country rock Garnet micaschist  
Sample weight 4,8 kg  
Depth 30 cm

Sample number 519032  
Latitude 4,52676  
Longitude 12,1089  
Elevation 593 m  
Entry type GPS  
Sample date 16-03-2011  
Geologist KB  
Sampletype Soil sediment sample  
Locality Nkoteng  
Subdivision Nkoteng  
Country rock ?  
Sample weight 7,4 kg  
Depth 30 cm

Sample number 519033  
Latitude 4,52676  
Longitude 12,1287  
Elevation 568 m  
Entry type GPS  
Sample date 16-03-2011  
Geologist KB  
Sampletype Soil sediment sample  
Locality Nkoteng  
Subdivision Nkoteng  
Country rock ?  
Sample weight 8 kg  
Depth 30 cm

Sample number 519034  
Latitude 4,29243  
Longitude 12,1069  
Elevation 633 m  
Entry type GPS  
Sample date 16-03-2011  
Geologist KB  
Sampletype Soil sediment sample  
Locality Bisso  
Subdivision Nkoteng  
Country rock Garnet gneiss  
Sample weight 9 kg  
Depth 30 cm

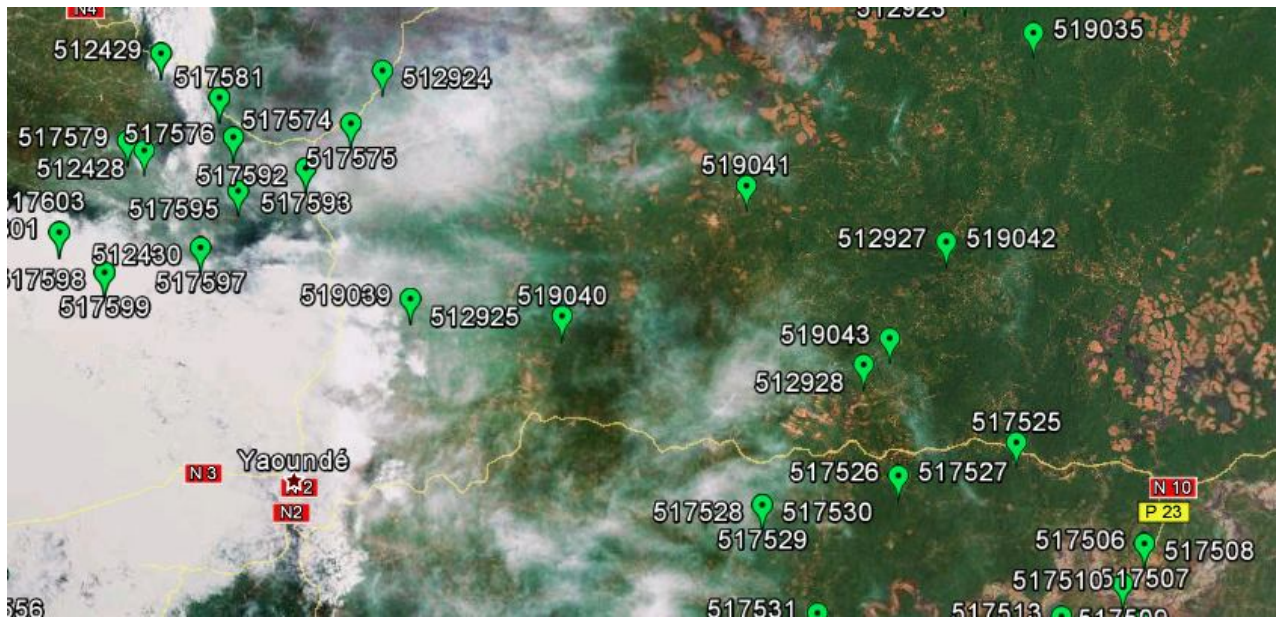
Sample number 519035  
Latitude 4,25467  
Longitude 12,1671  
Elevation 672 m  
Entry type GPS  
Sample date 16-03-2011  
Geologist KB  
Sampletype Soil sediment sample  
Locality Meza'a  
Subdivision Nkoteng  
Country rock Garnet gneiss  
Sample weight 8,2 kg  
Depth 40 cm

Sample number 519036  
Latitude 4,42982  
Longitude 11,8587  
Elevation 564 m  
Entry type GPS  
Sample date 17-03-2011  
Geologist KB  
Sampletype Soil sediment sample  
Locality Mbandjock  
Subdivision Mbandjock  
Country rock Garnet gneiss  
Sample weight 10 kg  
Depth 30 cm



Sample number 519037  
Latitude 4,353  
Longitude 11,626  
Elevation 445 m  
Entry type GPS  
Sample date 18-03-2011  
Geologist KB  
Sampletype Soil sediment sample  
Locality Nachtigal  
Subdivision Ntui  
Country rock Amphibolite  
Sample weight 5,6 kg  
Depth 30 cm

Sample number 519038  
Latitude 4,38605  
Longitude 11,7747  
Elevation 567 m  
Entry type GPS  
Sample date 18-03-2011  
Geologist KB  
Sampletype Soil sediment sample  
Locality Minkouma  
Subdivision Mbandjock  
Country rock Garnet gneiss  
Sample weight 6,5 kg  
Depth 30 cm



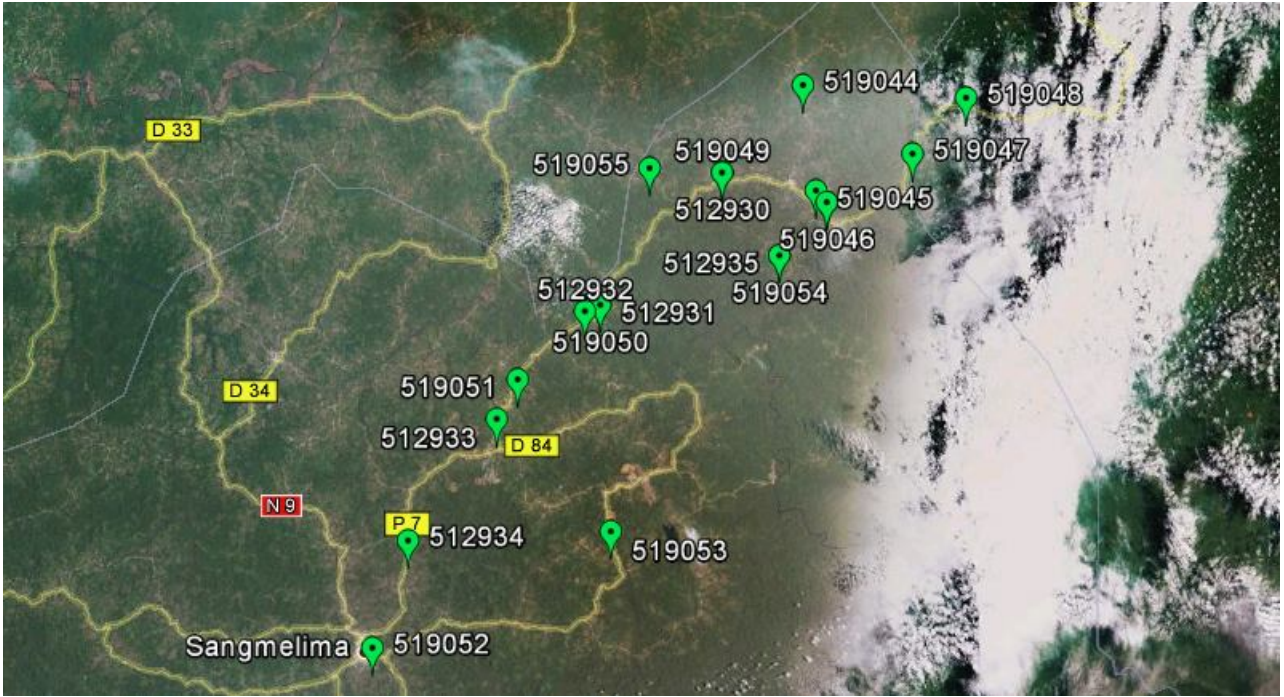
Sample number 519039  
Latitude 4,02035  
Longitude 11,6194  
Elevation 613 m  
Entry type GPS  
Sample date 19-03-2011  
Geologist KB  
Sampletype Soil sediment sample  
Locality Mebougou  
Subdivision Soa  
Country rock High grade gneiss  
Sample weight 8 kg  
Depth 30 cm

Sample number 519040  
Latitude 4,00533  
Longitude 11,7528  
Elevation 639 m  
Entry type GPS  
Sample date 19-03-2011  
Geologist KB  
Sampletype Soil sediment sample  
Locality Eyanmembeng  
Subdivision Esse  
Country rock High grade gneiss  
Sample weight 6,8 kg  
Depth 30 cm

Sample number 519041  
Latitude 4,12011  
Longitude 11,9149  
Elevation 616 m  
Entry type GPS  
Sample date 19-03-2011  
Geologist KB  
Sampletype Soil sediment sample  
Locality Bikoé  
Subdivision Esse  
Country rock High grade gneiss  
Sample weight 4 kg  
Depth 30 cm

Sample number 519042  
Latitude 4,0706  
Longitude 12,0904  
Elevation 655 m  
Entry type GPS  
Sample date 19-03-2011  
Geologist KB  
Sampletype Soil sediment sample  
Locality ?  
Subdivision ?  
Country rock ?  
Sample weight 2,9 kg  
Depth 30 cm

Sample number	519043
Latitude	3,98579
Longitude	12,0407
Elevation	641 m
Entry type	GPS
Sample date	19-03-2011
Geologist	KB
Sampletype	Soil sediment sample
Locality	Mvolo
Subdivision	Assamba
Country rock	High grade mylonitic gneiss
Sample weight	6,2 kg
Depth	30 cm





Sample number 519044  
Latitude 3,54076  
Longitude 12,4611  
Elevation 676 m  
Entry type GPS  
Sample date 20-03-2011  
Geologist KB  
Sampletype Soil sediment sample  
Locality Bibinda  
Subdivision Bengbis  
Country rock ?  
Sample weight 5,8 kg  
Depth 30 cm

Sample number 519045  
Latitude 3,4261  
Longitude 12,4752  
Elevation 650 m  
Entry type GPS  
Sample date 20-03-2011  
Geologist KB  
Sampletype Soil sediment sample  
Locality Ngounayos  
Subdivision Bengbis  
Country rock Chlorite schist  
Sample weight 4,6 kg  
Depth 30 cm

Sample number 519046  
Latitude 3,41329  
Longitude 12,4869  
Elevation 623 m  
Entry type GPS  
Sample date 20-03-2011  
Geologist KB  
Sampletype Soil sediment sample  
Locality Ngounayos  
Subdivision Bengbis  
Country rock Chlorite schist  
Sample weight 4,5 kg  
Depth 30 cm

Sample number 519047  
Latitude 3,46603  
Longitude 12,5805  
Elevation 572 m  
Entry type GPS  
Sample date 20-03-2011  
Geologist KB  
Sampletype Soil sediment sample  
Locality Makok-Aloum  
Subdivision Somalomo  
Country rock Chlorite schist  
Sample weight 8 kg  
Depth 30 cm

Sample number 519048  
Latitude 3,527  
Longitude 12,6388  
Elevation 644 m  
Entry type GPS  
Sample date 20-03-2011  
Geologist KB  
Sampletype Soil sediment sample  
Locality Longndzap  
Subdivision Somalomo  
Country rock Chlorite schist  
Sample weight 5,5 kg  
Depth 30 cm

Sample number 519049  
Latitude 3,44556  
Longitude 12,3731  
Elevation 631 m  
Entry type GPS  
Sample date 21-03-2011  
Geologist KB  
Sampletype Soil sediment sample  
Locality Bengbis  
Subdivision Bengbis  
Country rock Chlorite schist  
Sample weight 5,4 kg  
Depth 30 cm

Sample number 519050  
Latitude 3,30176  
Longitude 12,2405  
Elevation 631 m  
Entry type GPS  
Sample date 21-03-2011  
Geologist KB  
Sampletype Soil sediment sample  
Locality Assok  
Subdivision Dja et Lobo  
Country rock Chlorite schist  
Sample weight 8,5 kg  
Depth 30 cm

Sample number 519051  
Latitude 3,22085  
Longitude 12,1507  
Elevation 652 m  
Entry type GPS  
Sample date 21-03-2011  
Geologist KB  
Sampletype Soil sediment sample  
Locality Ngoundou  
Subdivision Dja et Lobo  
Country rock Mylonitic schist  
Sample weight 5,6 kg  
Depth 30 cm

Sample number 519052  
Latitude 2,92922  
Longitude 11,9926  
Elevation 651 m  
Entry type GPS  
Sample date 21-03-2011  
Geologist KB  
Sampletype Soil sediment sample  
Locality Sangmelima  
Subdivision Dja et Lobo  
Country rock Charnockite  
Sample weight 5,3 kg  
Depth 30 cm

Sample number 519053  
Latitude 3,05556  
Longitude 12,2518  
Elevation 631 m  
Entry type GPS  
Sample date 21-03-2011  
Geologist KB  
Sampletype Soil sediment sample  
Locality Meyomessala  
Subdivision Dja et Lobo  
Country rock Charnockite  
Sample weight 5,1 kg  
Depth 30 cm

Sample number 519054  
Latitude 3,35545  
Longitude 12,4354  
Elevation 627 m  
Entry type GPS  
Sample date 22-03-2011  
Geologist KB  
Sampletype Soil sediment sample  
Locality Nkolmekae  
Subdivision Dja et Lobo  
Country rock Garnet bearing metadiorite  
Sample weight 6,5 kg  
Depth 30 cm

Sample number 519055  
Latitude 3,4504  
Longitude 12,2942  
Elevation 574 m  
Entry type GPS  
Sample date 23-03-2011  
Geologist KB  
Sampletype Soil sediment sample  
Locality Mbome Ta'a  
Subdivision Dja et Lobo  
Country rock Schists  
Sample weight 5,1 kg  
Depth 30 cm