

Special core analysis for DONG Energy A/S
Well: 5604/29-3, Gwen-2

Mini-permeametry measured on core section
13900' - 14020.5' feet

Niels Springer



Special core analysis for DONG Energy A/S
Well: 5604/29-3, Gwen-2

Mini-permeametry measured on core section
13900' - 14020.5' feet

Niels Springer
Core Laboratory

Released 29.02.2012

Contents

1. Introduction	2
2. Analytical procedure	3
2.1 <i>Measurement</i>	3
2.2 <i>Calculation</i>	3
2.3 <i>Instrumental</i>	3
3. Results	4
3.1 <i>Mini permeability measurements</i>	4

Enclosure: - Core log
 - Data on CD-ROM

Req. no.: 09201-561
File: Gwen2-minipermrep.doc
 Gwen-2_miniperm.xls

1. Introduction

By request of DONG Energy A/S, GEUS Core Laboratory has performed special core analysis on the well Gwen-2 (5604/29-3), Danish North Sea. This well was drilled in the autumn of 1986 with Mærsk Olie og Gas AS as operator.

The experimental programme was specified in e-mail communications with Mr. Christian Høier. The following analytical programme has been carried out:

- Mini permeametry on 42 selected core sections

Data in a spreadsheet was forwarded to DONG Energy before February 1, 2007.

2. Analytical procedure

2.1 Measurement

From the Gwen-2 well 42 core boxes covering the depth interval 13900' – 14020.5' feet were received in the laboratory. The core had previously been slabbed and mini permeametry readings were taken along the major core slab at a step interval of 1.5 cm. Due to the overall low permeability of this core an upstream pressure of 2.8 bar was used throughout this study. Observations relating to the condition of the slab and the possible effect on the measurements were recorded during the work. This information is contained with the data sheets in section 3 of this report.

2.2 Calculation

In construction of the final mini permeametry log the medium flowmeter reading has been selected. Readings from the small and large flowmeter were normalized to the medium range by a set of conversion factors as follows:

- $L * 42 - 5.8 = M_1$
- $S * 0.22 - 3.4 = M_1$

where L and S indicates the large and small flowmeter reading respectively and M_1 is the calculated medium flowmeter figure. The linear regression analysis was based on a large number of simultaneous flowmeter readings at a number of depths along the core sections.

To proceed from the mean normalized flow reading to an equivalent gas permeability, gas permeability data were taken from the routine core analysis report¹ and a scatter diagram was constructed based on plug data and nearby mean flowmeter readings, ref. the 'sum' sub-spreadsheet in the attached Excel spreadsheet. Normalized (mean) flow readings below 9, equal to 0.3 mD, have been reset to 0 mD in preparation of the core log to avoid negative figures.

2.3 Instrumental

GEUS field mini permeameter M 1990 was used as a stationary lab instrument to measure the gas spot permeability. The instrument was connected directly to a regulated air supply in the laboratory and spot measurements taken with a 6 mm diameter flow probe. The upstream pressure was regulated to 2.8 bar setting on the pressure transducer (Druck®), and flow readings were recorded from 3 ball flowmeter tubes covering 3 orders of magnitude in gas flow (Ruska®). A leakage test is performed at regular intervals by placing the probe tip on an impermeable plate. The field mini permeameter has been described earlier in an internal GEUS report².

1. Olsen, Dan: Conventional Core Analysis for Mærsk Olie og Gas. Well: Gwen-2. Core no. 1, 2 and 3. DGU Confidential Report No. 3, 1987.

2. Madsen, Lena: Minipermeametry: Testing the DGU-minipermeameter. A contribution to the EFP-92 Project: Stochastic Modelling of Petrophysical properties in Chalk. DGU Service report no. 39, 1994.

3. Results

3.1 Mini permeability measurements

Readings vs depth are given in the following charts. A bar graph along the chart provides a quick visual impression of the scatter within the core box. Descriptive comments have been added as a guide to interpretation. The following abbreviations have been used:

'nxt plug nn'	- reading taken next to plug no. nn
'frc'	- reading taken close to or possibly affected by a fracture
'edge'	- reading taken close at the slab edge
'nd'	- reading not possible due to large fracture or missing core
'rubble'	- core material unsuitable for measurement
'btm'	- bottom reading - may be affected by marginal position

The attached core log show the mini permeability readings normalized to plug permeability data, and plug data have been added to make direct comparison possible.

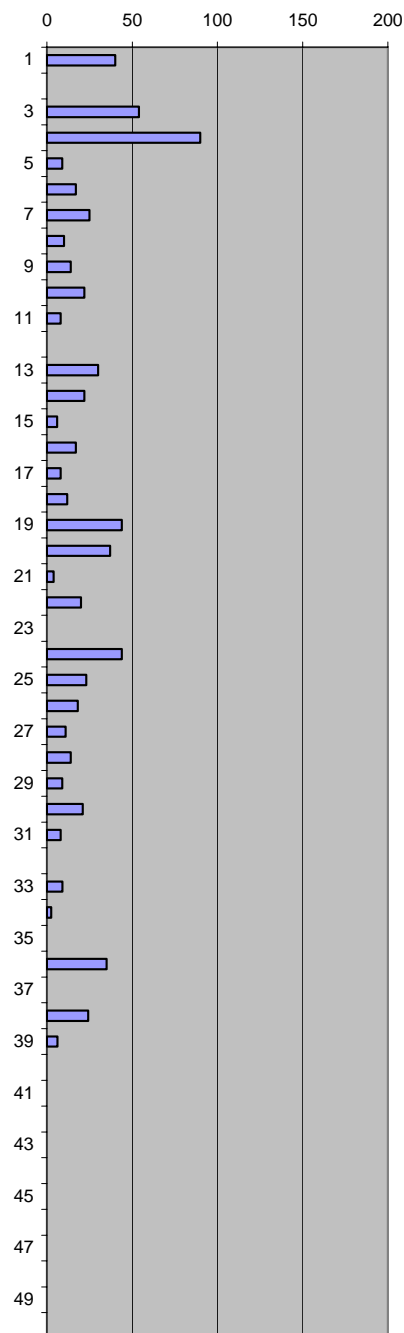
Sections along the Gwen-2 core are frequently calcite cemented and have very low gas permeability. Some core sections show a poor alignment between plug data and mini perm data presumably due to micro-cracks formed in the old, dry core enhancing the measured gas permeability.

Company: DONG Energy Well: Gwen-2, core 1
 Subject: Miniperm. Data 13900' - 13902'50"

Top box 1 4236.72 m

Flowm 1: small Flowm 2: medium
 Upstream P : 2.8 bar 2.8 bar

Depth, m	Flowm 1	Flowm 2	Mean flow	Comments
4236.735		40	40	
4236.750	8	0	0	
4236.765		54	54	nxt plug
4236.780		90	90	plug
4236.795		9	9	
4236.810		17	17	
4236.825		25	25	
4236.840		10	10	
4236.855		14	14	
4236.870		22	22	
4236.885		8	8	
4236.900				nd
4236.915		30	30	
4236.930		22	22	
4236.945		6	6	
4236.960		17	17	
4236.975		8	8	
4236.990	68	12	12	
4237.005		44	44	nxt plug
4237.020		37	37	nxt plug
4237.035		4	4	
4237.050		20	20	
4237.065				nd
4237.080		44	44	
4237.095		23	23	
4237.110		18	18	
4237.125		11	11	
4237.140		14	14	
4237.155	53	9	9	
4237.170	98	23	21	
4237.185	45	9	8	
4237.200	9		0	
4237.215	57		9	
4237.230	27		3	
4237.245				nd
4237.260	145	40	35	nxt kul
4237.275			0	nd kullag
4237.290	125		24	nxt kullag
4237.305	43		6	
4237.320	13		0	
4237.335	0		0	plug 3
4237.350	0		0	
4237.365	0		0	
4237.380	0		0	
4237.395	0		0	
4237.410	0		0	
4237.425	0		0	
4237.440	0		0	
4237.455	0		0	
4237.470	8		0	btm

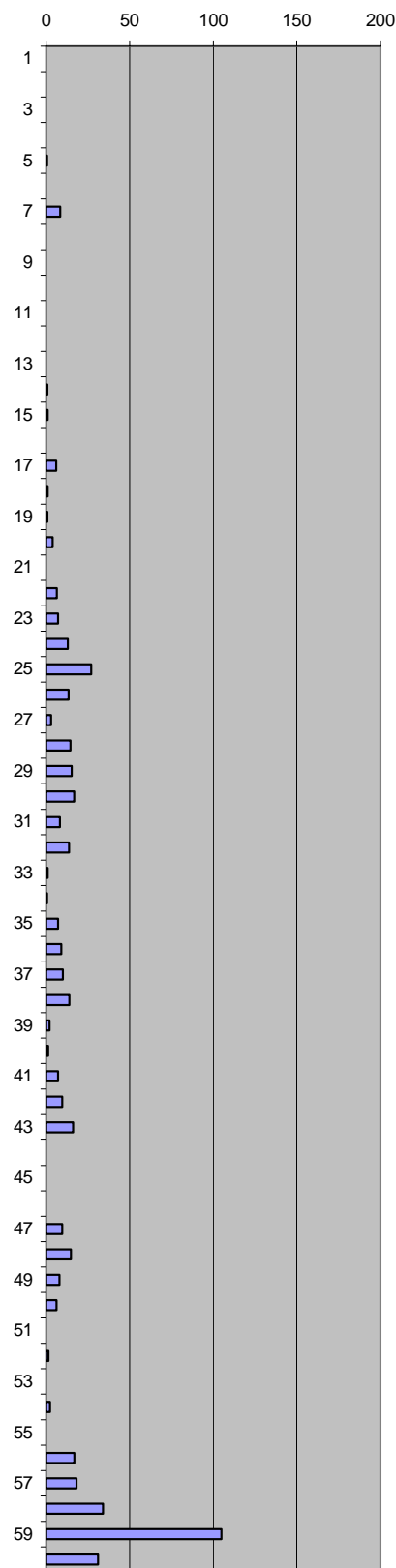


Company: DONG Energy Well: Gwen-2, core 1
 Subject: Miniperm. Data 13902'50" - 13905'50"

Top box 2 4237.48 m

Flowm 1: small Flowm 2: medium
 Upstream P : 2.8 bar 2.8 bar

Depth, m	Flowm 1	Flowm 2	Mean flow	Comments
4237.495	0		0	
4237.510	0		0	
4237.525	0		0	
4237.540	0		0	
4237.555	18		1	
4237.570	0		0	
4237.585	54		8	
4237.600	6		0	nxt plug
4237.615	3		0	plug 4
4237.630	0		0	
4237.645	1		0	
4237.660	0		0	
4237.675	13		0	
4237.690	19		1	
4237.705	20		1	
4237.720	16		0	
4237.735	43		6	
4237.750	20		1	
4237.765	19		1	
4237.780	33		4	
4237.795	16		0	
4237.810	45		7	
4237.825	48		7	
4237.840	85	10	13	
4237.855	148	25	27	
4237.870	77		14	
4237.885	29		3	
4237.900	82		15	
4237.915	85		15	nxt plug
4237.930	92		17	plug 5
4237.945	53		8	nxt plug
4237.960	78		14	
4237.975	20		1	
4237.990	18		1	
4238.005	48		7	
4238.020	57		9	
4238.035	75	7	10	
4238.050	64	16	14	
4238.065	25		2	
4238.080	21		1	
4238.095	48		7	
4238.110	60		10	
4238.125	89		16	
4238.140	16		0	
4238.155	16		0	
4238.170	4		0	
4238.185	60		10	
4238.200	83		15	
4238.215	52		8	
4238.230	44		6	plug 6
4238.245	12		0	
4238.260	22		1	
4238.275	12		0	
4238.290	26		2	
4238.305	10		0	
4238.320	90	17	17	
4238.335	98		18	frc
4238.350		34	34	frc
4238.365		105	105	frc
4238.380		31	31	btm

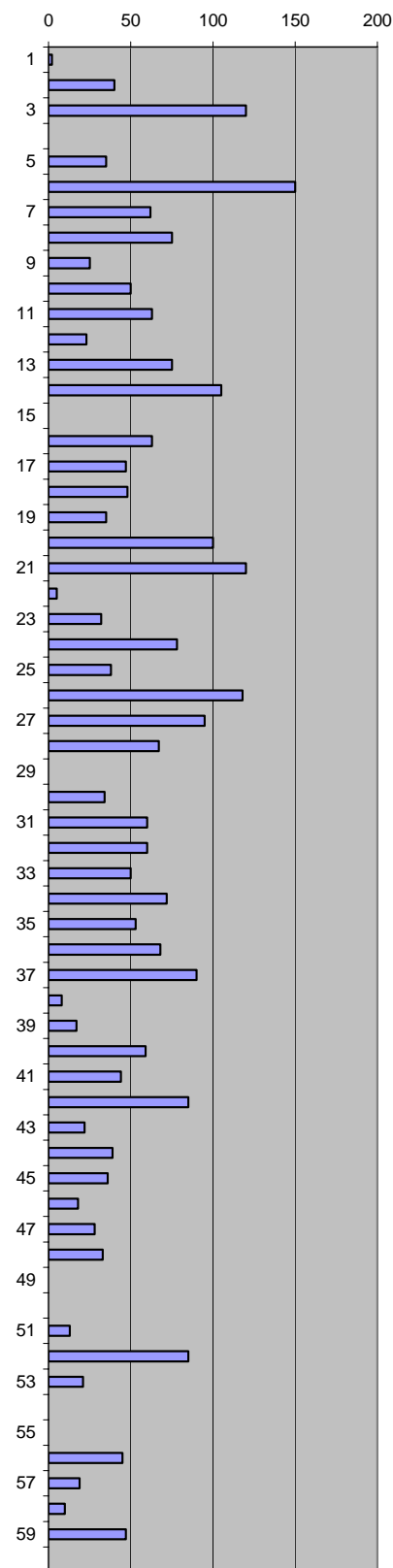


Company: DONG Energy Well: Gwen-2, core 1
 Subject: Miniperm. Data 13905'50" - 13908'50"

Top box 3 4238.395 m

Flowm 1: small Flowm 2: medium
 Upstream P : 2.8 bar 2.8 bar

Depth, m	Flowm 1	Flowm 2	Mean flow	Comments
4238.41		2	2	
4238.425		40	40	
4238.440		120	120	frc
4238.455				nd
4238.470		35	35	
4238.485		150	150	frc
4238.500		62	62	
4238.515		75	75	
4238.530		25	25	
4238.545		50	50	
4238.560		63	63	
4238.575		23	23	
4238.590		75	75	nxt plug 7
4238.605		105	105	frc
4238.620				nd
4238.635		63	63	
4238.650		47	47	
4238.665		48	48	
4238.680		35	35	
4238.695		100	100	frc
4238.710		120	120	frc
4238.725		5	5	
4238.740		32	32	
4238.755		78	78	
4238.770		38	38	
4238.785		118	118	
4238.800		95	95	
4238.815		67	67	
4238.830				nd
4238.845		34	34	
4238.860		60	60	
4238.875		60	60	
4238.890		50	50	
4238.905		72	72	frc
4238.920		53	53	nxt plug
4238.935		68	68	nxt plug
4238.950		90	90	plug 8
4238.965		8	8	
4238.980		17	17	
4238.995		59	59	
4239.010		44	44	frc, nxt plug
4239.025		85	85	frc, nxt plug
4239.040		22	22	frc, nxt plug
4239.055		39	39	
4239.070		36	36	
4239.085	84	20	18	
4239.100		28	28	
4239.115		33	33	
4239.130				nd
4239.145				nd
4239.160		13	13	
4239.175		85	85	
4239.190	101	22	21	
4239.205				nd
4239.220				nd
4239.235		45	45	
4239.250	103		19	
4239.265	56	10	10	
4239.280		47	47	nxt plug 9, frc
4239.295				btm, nd

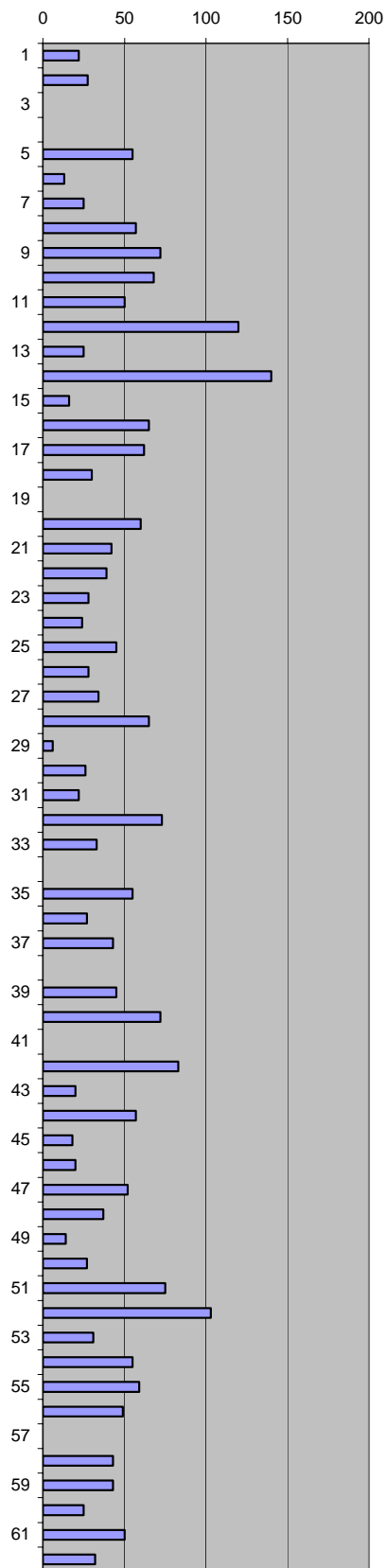


Company: DONG Energy Well: Gwen-2, core 1
 Subject: Miniperm. Data 13908'50" - 13911'50"

Top box 4 4239.31 m

Flowm 1: small Flowm 2: medium
 Upstream P : 2.8 bar 2.8 bar

Depth, m	Flowm 1	Flowm 2	Mean flow	Comments
4239.325	115		22	frc
4239.340	140		27	frc
4239.355	7		0	
4239.370	14		0	
4239.385		55	55	
4239.400	67	15	13	
4239.415	125	25	25	
4239.430		57	57	
4239.445		72	72	
4239.460		68	68	
4239.475		50	50	
4239.490		120	120	frc
4239.505		25	25	
4239.520		140	140	frc, nxt plug
4239.535		16	16	
4239.550		65	65	nxt plug 1,5"
4239.565		62	62	nxt plug 1,5"
4239.580		30	30	
4239.595				nd
4239.610		60	60	plug 10
4239.625		42	42	plug 10
4239.640		39	39	
4239.655		28	28	
4239.670		24	24	
4239.685		45	45	
4239.700		28	28	
4239.715		34	34	
4239.730		65	65	
4239.745		6	6	
4239.760		26	26	
4239.775		22	22	
4239.790		73	73	
4239.805		33	33	
4239.820				nd
4239.835		55	55	
4239.850		27	27	
4239.865		43	43	
4239.880				nd
4239.895		45	45	
4239.910		72	72	plug 2V
4239.925				
4239.940		83	83	nxt plug, frc
4239.955		20	20	plug 11
4239.970		57	57	nxt plug
4239.985		18	18	
4240.000		20	20	
4240.015		52	52	
4240.030		37	37	
4240.045		14	14	
4240.060		27	27	
4240.075		75	75	
4240.090		103	103	
4240.105		31	31	
4240.120		55	55	
4240.135		59	59	
4240.150		49	49	
4240.165	8		0	
4240.180		43	43	
4240.195		43	43	
4240.210		25	25	
4240.225		50	50	
4240.240		32	32	btm

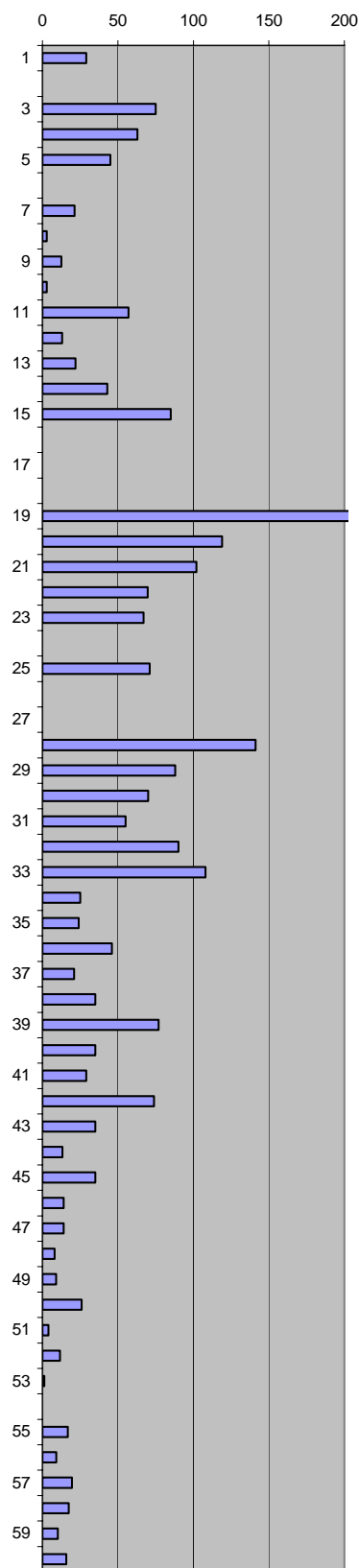


Company: DONG Energy Well: Gwen-2, core 1
 Subject: Miniper. Data 13911'50" - 13914'50"

Top box 5 4240.225 m

Flowm 1: small	Flowm 2: medium	Flowm 3: large
Upstream P : 2.8 bar	2.8 bar	2.8 bar

Depth, m	Flowm 1	Flowm 2	Flowm 3	Mean flow	Comments
4240.240		29		29	nxt plug 12
4240.255	0	0		0	
4240.270		75		75	
4240.285		63		63	
4240.300		45		45	
4240.315	10			0	
4240.330	112			21	
4240.345	29			3	
4240.360	73			13	
4240.375	29			3	
4240.390		57		57	frc
4240.405		13		13	
4240.420		22		22	
4240.435		43		43	
4240.450		85		85	frc
4240.465					nd
4240.480					nd
4240.495					nd
4240.510			6	246	frc
4240.525		117	3	119	frc
4240.540		104	2.5	102	frc
4240.555			1.8	70	frc
4240.570		67		67	frc
4240.585					nd
4240.600		71		71	
4240.615					nd
4240.630					nd
4240.645		140	3.5	141	
4240.660		88		88	nxt plug
4240.675		70		70	plug 13
4240.690		55		55	nxt plug
4240.705		90		90	plug
4240.720		108		108	nxt plug/frc
4240.735		25		25	
4240.750		24		24	
4240.765		46		46	plug
4240.780		21		21	
4240.795		35		35	
4240.810		77		77	
4240.825		35		35	
4240.840		29		29	
4240.855		74		74	plug
4240.870		35		35	
4240.885	75	13		13	
4240.900		35		35	
4240.915		14		14	
4240.930		14		14	
4240.945		8		8	
4240.960		9		9	
4240.975		26		26	plug 14
4240.990	23	5		4	
4241.005	68			12	
4241.020	21			1	
4241.035	13			0	
4241.050	92			17	
4241.065	57			9	
4241.080	104			19	
4241.095	95			18	
4241.110	62			10	
4241.125	87			16	edge

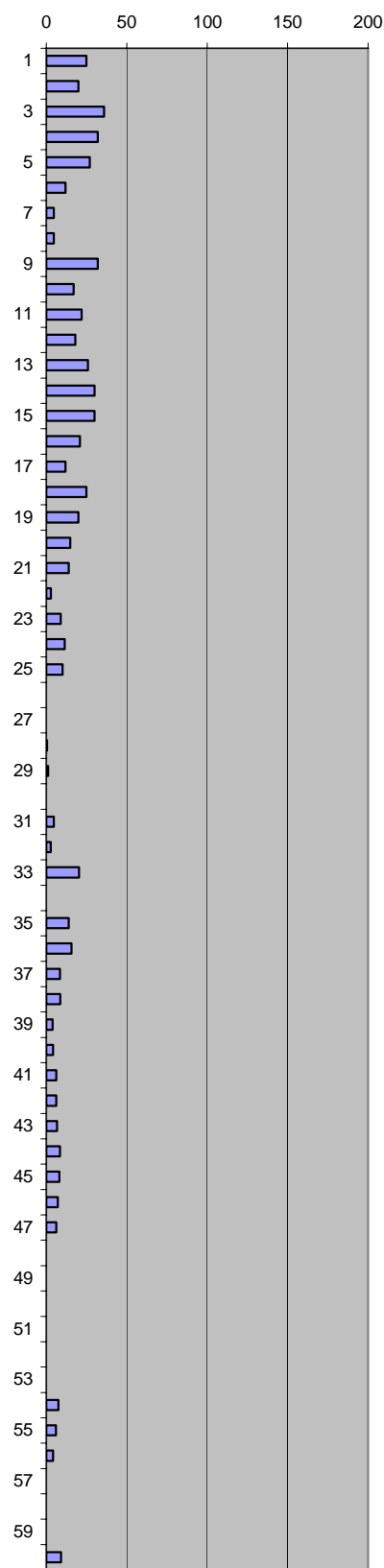


Company: DONG Energy Well: Gwen-2, core 1
 Subject: Miniperm. Data 13914'50" - 13917'50"

Top box 6 4241.14 m

Flowm 1: small Flowm 2: medium
 Upstream P : 2.8 bar 2.8 bar

Depth, m	Flowm 1	Flowm 2	Mean flow	Comments
4241.155		25	25	
4241.170		20	20	
4241.185		36	36	
4241.200		32	32	
4241.215	114	31	27	
4241.230	76	10	12	
4241.245	37	4	5	
4241.260	37		5	
4241.275		32	32	plug 15
4241.290		17	17	
4241.305		22	22	
4241.320		18	18	
4241.335		26	26	
4241.350		30	30	
4241.365		30	30	
4241.380		21	21	
4241.395		12	12	
4241.410		25	25	
4241.425		20	20	
4241.440		15	15	
4241.455		14	14	
4241.470		3	3	
4241.485	67	7	9	
4241.500	68		12	
4241.515	62		10	
4241.530	13		0	
4241.545	8		0	
4241.560	18		1	
4241.575	21		1	
4241.590	10		0	plug 16
4241.605	37		5	nxt plug
4241.620	28		3	nxt plug
4241.635	108		20	nxt plug, frc
4241.650				nd
4241.665	82	12	14	
4241.680	87		16	
4241.695	54		8	
4241.710	55		9	
4241.725	33		4	
4241.740	35		4	
4241.755	44		6	
4241.770	44		6	
4241.785	46		7	
4241.800	54		8	
4241.815	53		8	
4241.830	48		7	
4241.845	44		6	
4241.860	16		0	
4241.875	16		0	
4241.890	13		0	plug 17
4241.905	11		0	
4241.920	13		0	
4241.935	10		0	
4241.950	50		8	
4241.965	43		6	
4241.980	35		4	
4241.995	12		0	
4242.010	11		0	
4242.025	12		0	
4242.040	57		9	btm

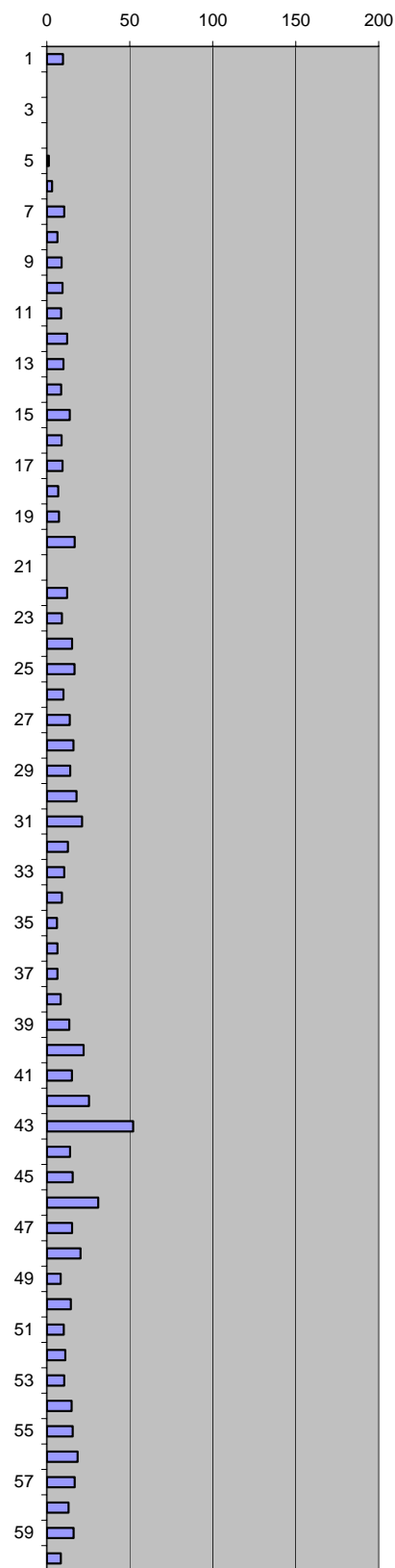


Company: DONG Energy Well: Gwen-2, core 1
 Subject: Miniperm. Data 13917'50" - 13920'50"

Top box 7 4242.055 m

Flowm 1: small Flowm 2: medium
 Upstream P : 2.8 bar 2.8 bar

Depth, m	Flowm 1	Flowm 2	Mean flow	Comments
4242.070	60		10	
4242.085	10		0	
4242.100	10		0	
4242.115	15		0	
4242.130	21		1	
4242.145	30		3	
4242.160	63		10	
4242.175	45		7	nxt plug
4242.190	56		9	plug 18
4242.205	58		9	plug
4242.220	55		9	nxt plug
4242.235	71		12	
4242.250	61		10	
4242.265	55		9	
4242.280	78		14	
4242.295	56		9	
4242.310	58		9	
4242.325	47		7	
4242.340	49		7	
4242.355	92		17	
4242.370				nd
4242.385	71		12	
4242.400	57		9	
4242.415	85		15	
4242.430	91		17	
4242.445	61		10	
4242.460	78		14	
4242.475	88		16	
4242.490	80		14	plug
4242.505	97		18	plug 19
4242.520	112		21	plug
4242.535	73		13	plug
4242.550	63		10	nxt plug
4242.565	57		9	
4242.580	43		6	
4242.595	45		7	frc
4242.610	45		7	
4242.625	53		8	
4242.640	77		14	nxt plug
4242.655	116		22	plug
4242.670	84		15	plug
4242.685	131		25	nxt plug
4242.700		52	52	
4242.715	89	11	14	
4242.730	86		16	
4242.745	148	33	31	
4242.760	85		15	
4242.775	108		20	
4242.790	53		8	
4242.805	81		14	plug
4242.820	62		10	plug 20
4242.835	66		11	
4242.850	63		10	
4242.865	83		15	
4242.880	86		16	
4242.895	100		19	
4242.910	92		17	plug V
4242.925	75		13	plug V
4242.940	89		16	plug V
4242.955	54		8	plug 3V, edge

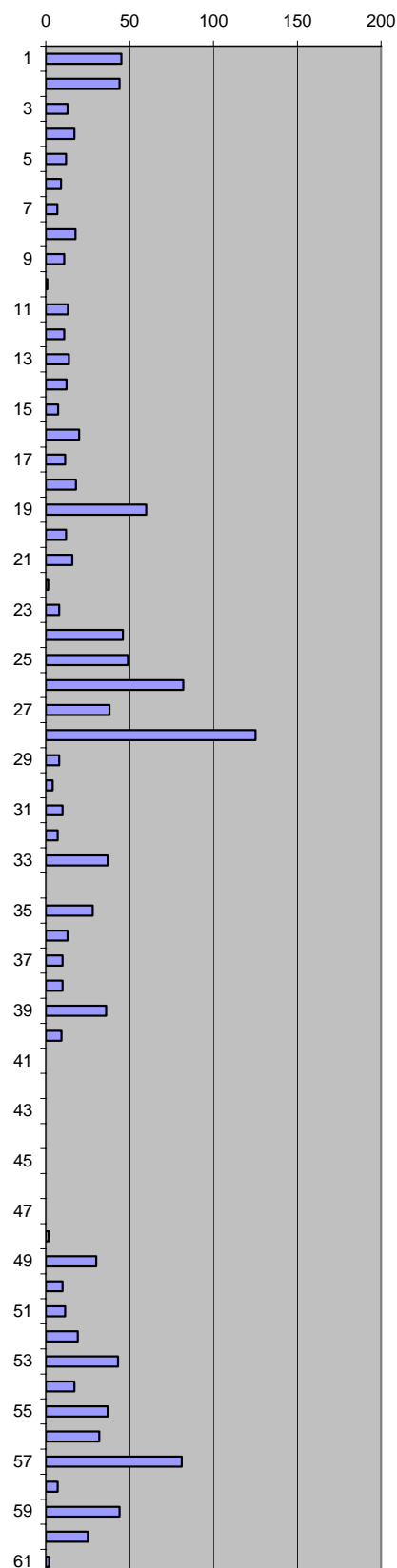


Company: DONG Energy Well: Gwen-2, core 1
 Subject: Miniperm. Data 13920'50" - 13923'50"

Top box 8 4242.97 m

Flowm 1: small Flowm 2: medium
 Upstream P : 2.8 bar 2.8 bar

Depth, m	Flowm 1	Flowm 2	Mean flow	Comments
4242.985		45	45	
4243.000		44	44	
4243.015		13	13	
4243.030		17	17	
4243.045		12	12	
4243.060		9	9	
4243.075	47		7	
4243.090	96		18	plug
4243.105	65		11	plug 21
4243.120	20		1	
4243.135	75		13	
4243.150	65		11	
4243.165	78		14	
4243.180	72		12	
4243.195	49		7	
4243.210	106		20	frc
4243.225	68		12	
4243.240	85	20	18	
4243.255		60	60	
4243.270	85	8	12	
4243.285	87		16	
4243.300	22		1	
4243.315	56	7	8	
4243.330		46	46	
4243.345		49	49	
4243.360		82	82	
4243.375		38	38	
4243.390		125	125	
4243.405		8	8	
4243.420	27	4	4	plug 22
4243.435		10	10	
4243.450		7	7	
4243.465		37	37	
4243.480				nd
4243.495		28	28	
4243.510		13	13	
4243.525		10	10	
4243.540		10	10	
4243.555		36	36	
4243.570	58		9	
4243.585	5		0	
4243.600	13		0	
4243.615	5		0	
4243.630	5		0	
4243.645	5		0	
4243.660	9		0	
4243.675	16		0	
4243.690	23		2	
4243.705		30	30	
4243.720	72	8	10	nxt plug
4243.735	68		12	plug 23
4243.750	102		19	plug
4243.765		43	43	
4243.780		17	17	
4243.795		37	37	
4243.810		32	32	
4243.825		81	81	
4243.840		7	7	
4243.855		44	44	
4243.870		25	25	
4243.885	21	2	2	btm

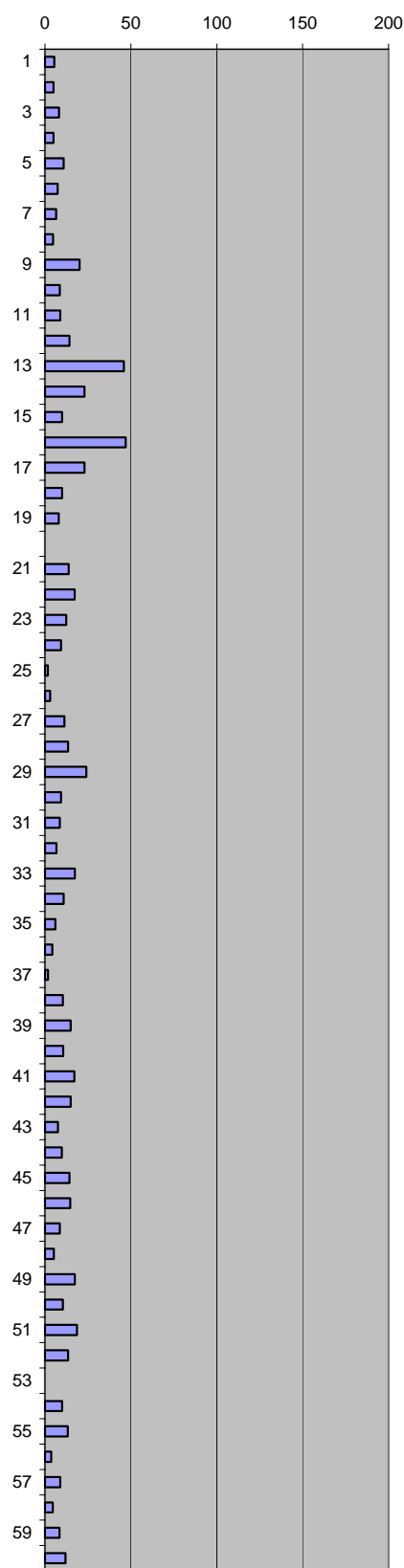


Company: DONG Energy Well: Gwen-2, core 1
 Subject: Miniperm. Data 13923'50" - 13926'50"

Top box 9 4243.885 m

Flowm 1: small Flowm 2: medium
 Upstream P : 2.8 bar 2.8 bar

Depth, m	Flowm 1	Flowm 2	Mean flow	Comments
4243.900	40		5	
4243.915	38		5	
4243.930	53		8	
4243.945	38		5	
4243.960	65		11	plug 1,5"
4243.975	49		7	
4243.990	45		7	
4244.005	37		5	
4244.020	107		20	plug
4244.035	55		9	plug 24
4244.050	56		9	
4244.065	80		14	
4244.080		46	46	
4244.095		23	23	
4244.110	72	8	10	
4244.125		47	47	
4244.140		23	23	
4244.155		10	10	
4244.170	66	5	8	
4244.185				nd
4244.200	78		14	
4244.215	94		17	
4244.230	72		12	
4244.245	58		9	
4244.260	23		2	
4244.275	29		3	
4244.290	67		11	
4244.305	77		14	
4244.320	125		24	nxt plug
4244.335	58		9	plug 25
4244.350	55		9	
4244.365	46		7	
4244.380	95		18	
4244.395	65		11	
4244.410	43		6	
4244.425	35		4	
4244.440	24		2	
4244.455	63		10	
4244.470	84		15	
4244.485	64		11	
4244.500	93		17	
4244.515	84		15	
4244.530	50		8	
4244.545	60		10	
4244.560	80		14	
4244.575	82		15	
4244.590	55		9	
4244.605	39		5	
4244.620	95		18	nxt plug
4244.635	63		10	plug 26
4244.650	100		19	nxt plug
4244.665	77		14	
4244.680				nd
4244.695	61		10	plug
4244.710	76		13	plug
4244.725	32		4	
4244.740	56		9	
4244.755	36		5	
4244.770	54		8	
4244.785	70		12	btm

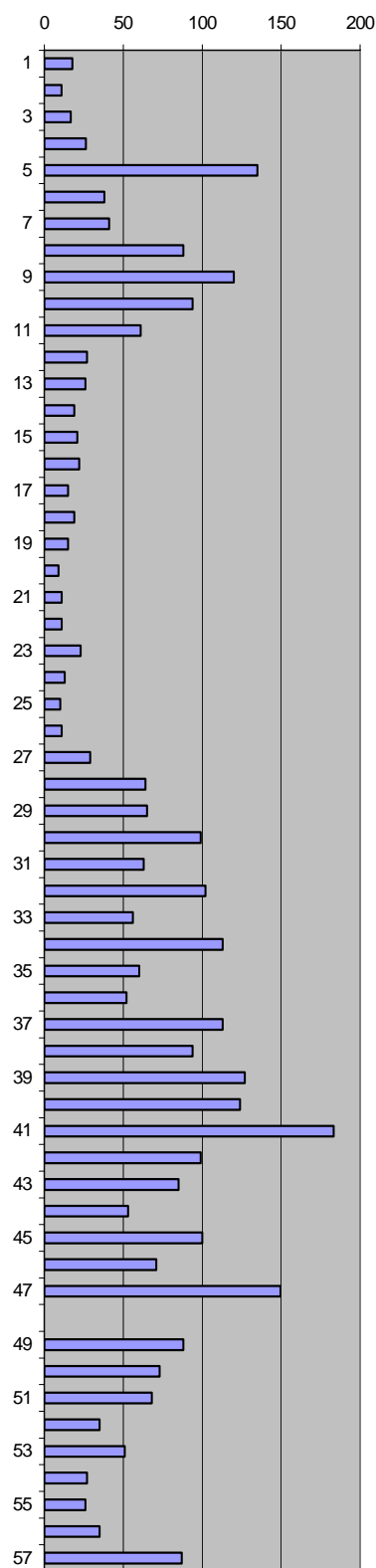


Company: DONG Energy Well: Gwen-2, core 1
 Subject: Miniper. Data 13926'50" - 13929'41"

Top box 10 4244.795 m

Flowm 1: small	Flowm 2: medium	Flowm 3: large
Upstream P : 2.8 bar	2.8 bar	2.8 bar

Depth, m	Flowm 1	Flowm 2	Flowm 3	Mean flow	Comments
4244.810	96			18	
4244.825	65			11	
4244.840	92			17	
4244.855	135	26		26	
4244.870		135		135	
4244.885		36	1.1	38	
4244.900		41		41	
4244.915		88		88	nxt plug
4244.930		120		120	plug, frc
4244.945		94		94	plug 27
4244.960		61		61	plug
4244.975		27		27	nxt plug
4244.990		26		26	
4245.005		19		19	
4245.020		21		21	
4245.035		22		22	
4245.050		15		15	
4245.065		19		19	
4245.080		15		15	
4245.095		9		9	
4245.110		11		11	
4245.125		11		11	
4245.140		23		23	
4245.155		13		13	
4245.170		10		10	
4245.185		11		11	
4245.200		29		29	
4245.215		64		64	
4245.230		65		65	nxt plug
4245.245		99		99	plug 28
4245.260		63		63	plug
4245.275		102		102	plug
4245.290		56		56	
4245.305		113		113	
4245.320		60		60	
4245.335		52		52	
4245.350		113		113	
4245.365		94		94	nxt plug
4245.380		127		127	plug
4245.395		124		124	plug
4245.410			4.5	183	plug
4245.425		95	2.6	99	nxt plug
4245.440		76	2.4	85	plug
4245.455		53		53	plug
4245.470		100		100	nxt plug
4245.485		71		71	
4245.500			3.7	150	frc
4245.515					nd
4245.530		88		88	nxt plug
4245.545		73		73	plug 29
4245.560		68		68	
4245.575		35		35	
4245.590		51		51	
4245.605		27		27	
4245.620		26		26	
4245.635		35		35	
4245.650		87		87	btm

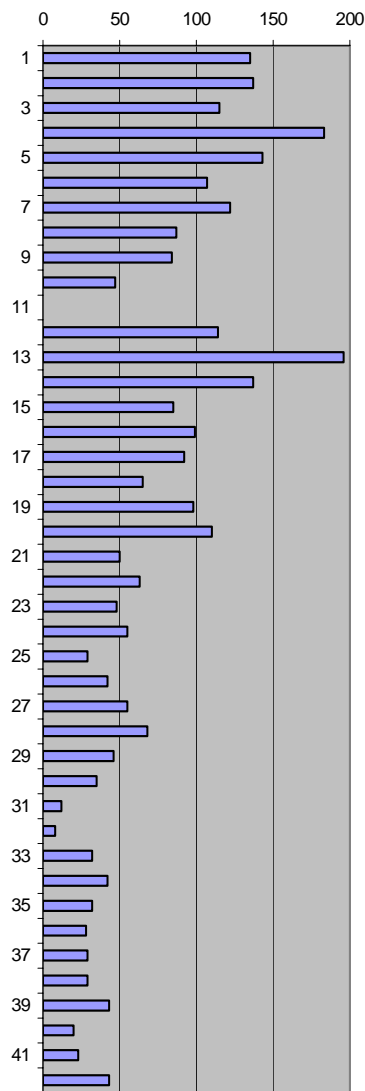


Company: DONG Energy Well: Gwen-2, core 1
 Subject: Miniper. Data 13929'41" - 13931'50"

Top box 11 4245.685 m

Flowm 1: small	Flowm 2: medium	Flowm 3: large
Upstream P: 2.8 bar	2.8 bar	2.8 bar

Depth, m	Flowm 1	Flowm 2	Flowm 3	Mean flow	Comments
4245.700		135		135	
4245.715		137		137	
4245.730		115		115	
4245.745			4.5	183	
4245.760		145	3.5	143	
4245.775		102	2.8	107	
4245.790		120	3.1	122	
4245.805		87		87	plug 4V
4245.820		84		84	plug
4245.835		47		47	plug 30
4245.850					nd
4245.865		114		114	
4245.880			4.8	196	nxt plug
4245.895			3.4	137	plug
4245.910		82	2.2	85	
4245.925		99		99	
4245.940		92		92	
4245.955		65		65	
4245.970		98		98	
4245.985		110		110	
4246.000		50		50	
4246.015		63		63	
4246.030		48		48	
4246.045		55		55	
4246.060		29		29	
4246.075		42		42	
4246.090		55		55	
4246.105		68		68	
4246.120		46		46	
4246.135		35		35	
4246.150		12		12	plug 31
4246.165		8		8	
4246.180		32		32	
4246.195		42		42	
4246.210		32		32	
4246.225		28		28	
4246.240		29		29	
4246.255		29		29	
4246.270		43		43	
4246.285		20		20	
4246.300		23		23	
4246.315		43		43	btm

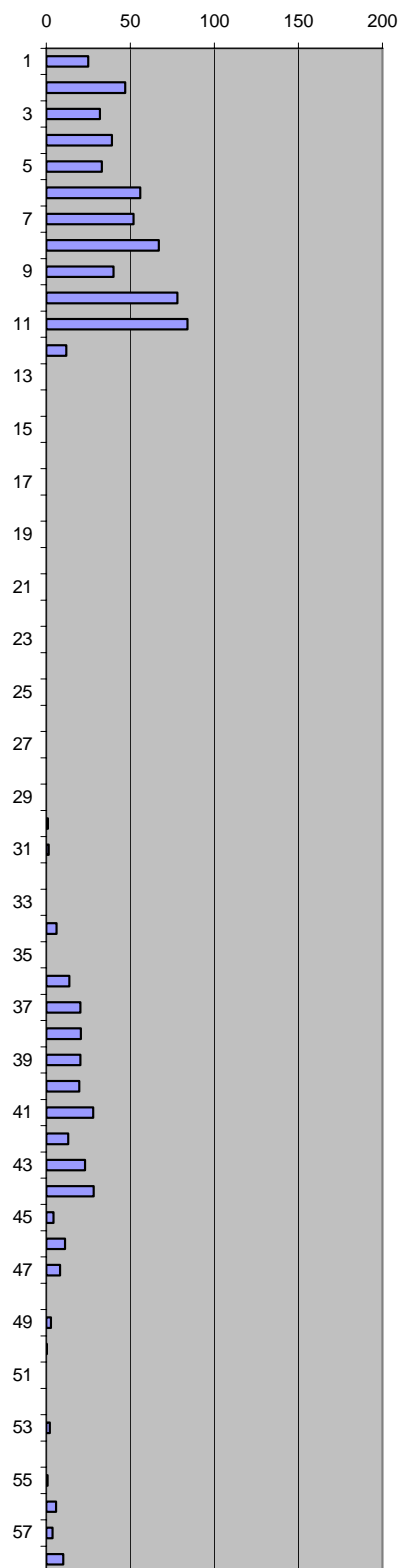


Company: DONG Energy Well: Gwen-2, core 1
 Subject: Miniperm. Data 13931'50" - 13934'50"

Top box 12 4246.32 m

Flowm 1: small Flowm 2: medium
 Upstream P : 2.8 bar 2.8 bar

Depth, m	Flowm 1	Flowm 2	Mean flow	Comments
4246.335		25	25	
4246.350		47	47	
4246.365		32	32	
4246.380		39	39	
4246.395		33	33	
4246.410		56	56	
4246.425		52	52	
4246.440		67	67	
4246.455		40	40	
4246.470		78	78	
4246.485		84	84	plug 32
4246.500		12	12	
4246.515	0		0	
4246.530	3		0	
4246.545	3		0	
4246.560	1		0	
4246.575	1		0	
4246.590	4		0	
4246.605	1		0	
4246.620	10		0	
4246.635	2		0	
4246.650	0		0	
4246.665	3		0	
4246.680	0		0	
4246.695	0		0	
4246.710	7		0	
4246.725	4		0	
4246.740	0		0	
4246.755	3		0	
4246.770	20		1	plug 33
4246.785	22		1	
4246.800	8		0	
4246.815	15		0	
4246.830	43		6	
4246.845	16		0	
4246.860	78		14	
4246.875	108		20	
4246.890	109		21	
4246.905	108		20	plug
4246.920	105		20	plug
4246.935	142		28	plug
4246.950	75		13	
4246.965	120		23	
4246.980	144		28	
4246.995	35		4	
4247.010	66		11	
4247.025	53		8	
4247.040	12		0	
4247.055	28		3	
4247.070	17		0	plug 34
4247.085	8		0	
4247.100	7		0	
4247.115	25		2	
4247.130	9		0	
4247.145	19		1	
4247.160	42		6	
4247.175	32		4	
4247.190	62		10	btm

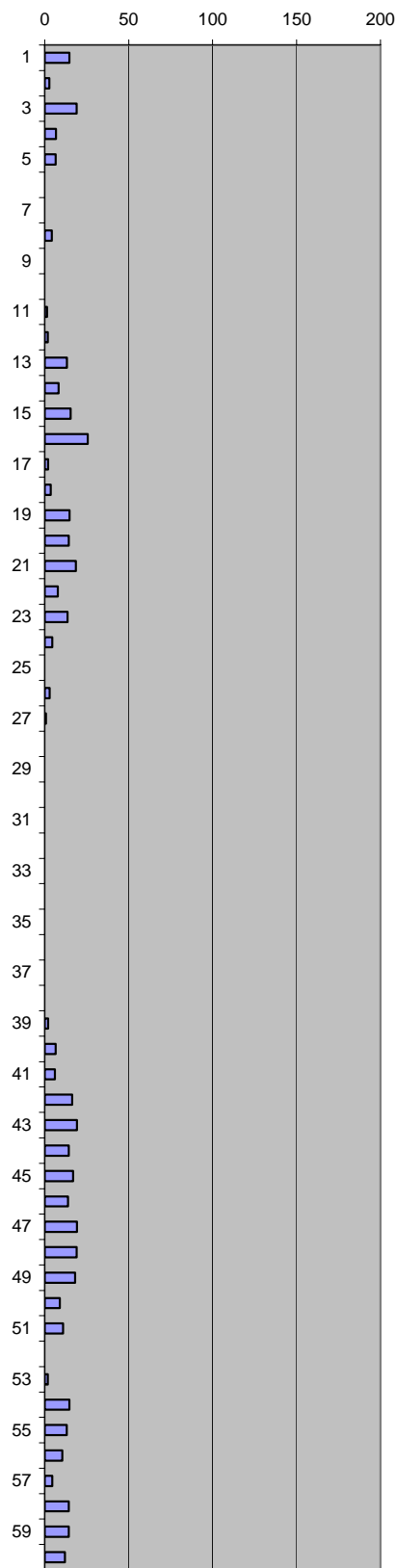


Company: DONG Energy Well: Gwen-2, core 1
 Subject: Miniperm. Data 13934'50" - 13937'50"

Top box 13 4247.235 m

Flowm 1: small Flowm 2: medium
 Upstream P : 2.8 bar 2.8 bar

Depth, m	Flowm 1	Flowm 2	Mean flow	Comments
4247.250	82		15	
4247.265	28		3	
4247.280	102		19	plug
4247.295	46		7	
4247.310	45		7	
4247.325	16		0	
4247.340	10		0	
4247.355	35		4	
4247.370	17		0	
4247.385	10		0	plug 35
4247.400	22		1	
4247.415	24		2	
4247.430	76		13	
4247.445	53		8	
4247.460	86		16	
4247.475	132	28	26	
4247.490	25		2	
4247.505	32		4	
4247.520	83		15	
4247.535	81		14	
4247.550	100		19	
4247.565	51		8	
4247.580	77		14	
4247.595	36		5	
4247.610	15		0	
4247.625	29		3	
4247.640	19		1	
4247.655	15		0	
4247.670	9		0	
4247.685	13		0	plug 36
4247.700	9		0	
4247.715	5		0	
4247.730	1		0	
4247.745	12		0	
4247.760	2		0	
4247.775	6		0	
4247.790	8		0	
4247.805	9		0	
4247.820	25		2	
4247.835	45		7	
4247.850	43		6	
4247.865	90		16	
4247.880	103		19	
4247.895	81		14	
4247.910	92		17	
4247.925	79		14	
4247.940	103		19	
4247.955	102		19	
4247.970	98		18	nxt plug
4247.985	57		9	plug 37
4248.000	65		11	plug
4248.015	17		0	
4248.030	24		2	
4248.045	82		15	
4248.060	75		13	
4248.075	63		10	
4248.090	36		5	
4248.105	81		14	
4248.120	81		14	
4248.135	70		12	btm

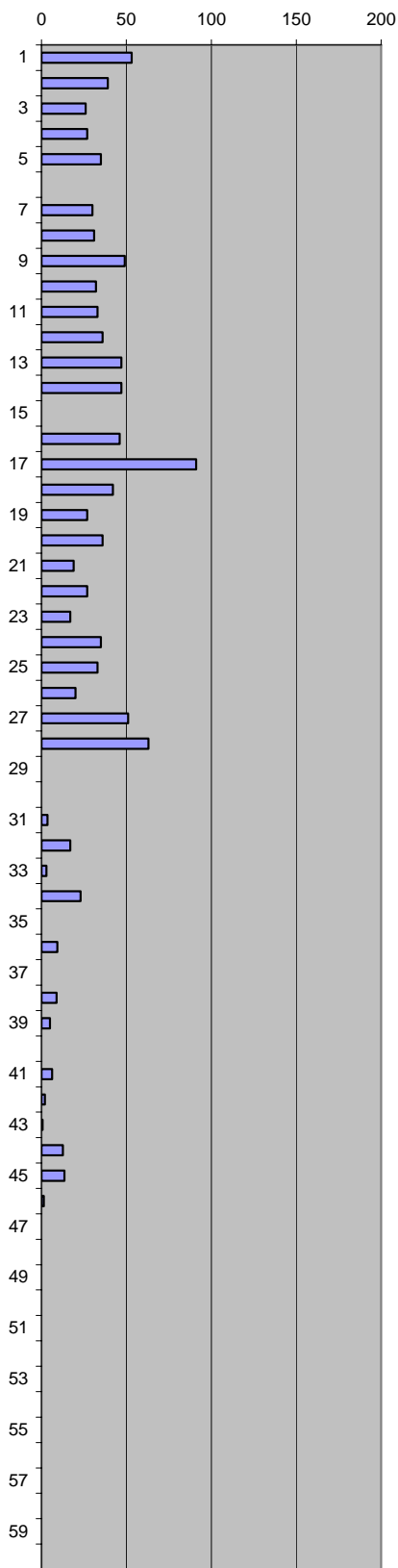


Company: DONG Energy Well: Gwen-2, core 1
 Subject: Miniperm. Data 13937'50" - 13940'50"

Top box 14 4248.15 m

Flowm 1: small Flowm 2: medium
 Upstream P : 2.8 bar 2.8 bar

Depth	Flowm 1	Flowm 2	Mean flow	Comments
4248.165		53	53	
4248.180		39	39	
4248.195		26	26	
4248.210		27	27	
4248.225		35	35	
4248.240				nd
4248.255		30	30	
4248.270		31	31	
4248.285		49	49	plug 38
4248.300		32	32	
4248.315		33	33	
4248.330		36	36	
4248.345		47	47	
4248.360		47	47	
4248.375				nd
4248.390		46	46	
4248.405		91	91	
4248.420		42	42	
4248.435		27	27	
4248.450		36	36	
4248.465		19	19	
4248.480		27	27	
4248.495		17	17	
4248.510		35	35	
4248.525		33	33	
4248.540		20	20	
4248.555		51	51	nxt plug
4248.570		63	63	plug 39
4248.585	4		0	
4248.600	1		0	
4248.615	32		4	
4248.630	113	13	17	
4248.645	32	2	3	
4248.660	120		23	
4248.675	12		0	
4248.690	58		9	
4248.705	17		0	
4248.720	56		9	
4248.735	38		5	
4248.750	11		0	
4248.765	44		6	
4248.780	25		2	
4248.795	18		1	
4248.810	73		13	
4248.825	77		14	
4248.840	22		1	
4248.855	3		0	
4248.870	5		0	
4248.885	8		0	
4248.900	10		0	plug 40
4248.915	7		0	
4248.930			0	nd
4248.945	12		0	plug 5V
4248.960	6		0	
4248.975	6		0	
4248.990	9		0	
4249.005	5		0	
4249.020	8		0	
4249.035	5		0	
4249.050	5		0	btm

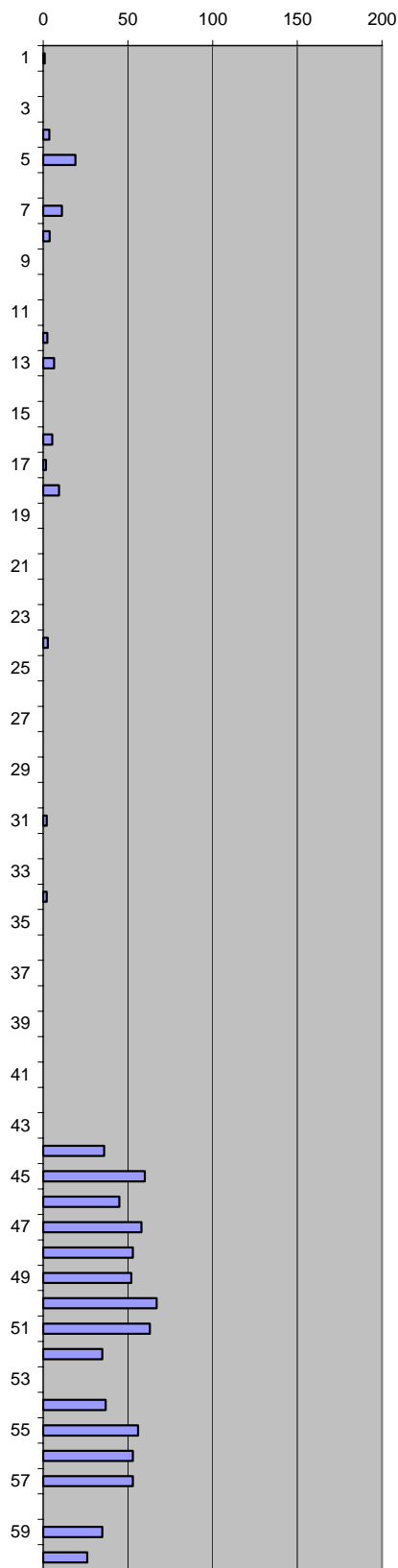


Company: DONG Energy Well: Gwen-2, core 1
 Subject: Miniperm. Data 13940'50" - 13943'50"

Top box 15 4249.065 m

Flowm 1: small Flowm 2: medium
 Upstream P : 2.8 bar 2.8 bar

Depth, m	Flowm 1	Flowm 2	Mean flow	Comments
4249.080	20		1	edge
4249.095	6		0	
4249.110	5		0	
4249.125	32		4	
4249.140	102		19	frc
4249.155	5		0	frc
4249.170	66		11	plug
4249.185	33		4	plug
4249.200	5		0	nxt plug
4249.215	4		0	plug 41
4249.230	10		0	plug
4249.245	27		3	nxt plug
4249.260	45		7	
4249.275	3		0	
4249.290	8		0	
4249.305	40		5	
4249.320	23		2	
4249.335	58		9	
4249.350	6		0	
4249.365	6		0	
4249.380	2		0	
4249.395	3		0	
4249.410	1		0	
4249.425	28		3	
4249.440	2		0	
4249.455	2		0	
4249.470	5		0	
4249.485	2		0	
4249.500	4		0	
4249.515	2		0	plug 42
4249.530	25		2	nxt plug
4249.545	0		0	
4249.560	4		0	
4249.575	25		2	
4249.590	7		0	
4249.605	3		0	
4249.620	2		0	
4249.635	1		0	
4249.650	1		0	
4249.665	2		0	
4249.680	6		0	
4249.695	8		0	
4249.710	10		0	
4249.725		36	36	
4249.740		60	60	
4249.755		45	45	
4249.770		58	58	
4249.785		53	53	nxt plug
4249.800		52	52	plug 43
4249.815		67	67	plug
4249.830		63	63	plug
4249.845		35	35	nxt plug
4249.860				nd
4249.875		37	37	
4249.890		56	56	
4249.905		53	53	
4249.920		53	53	
4249.935				nd
4249.950		35	35	
4249.965		26	26	btm

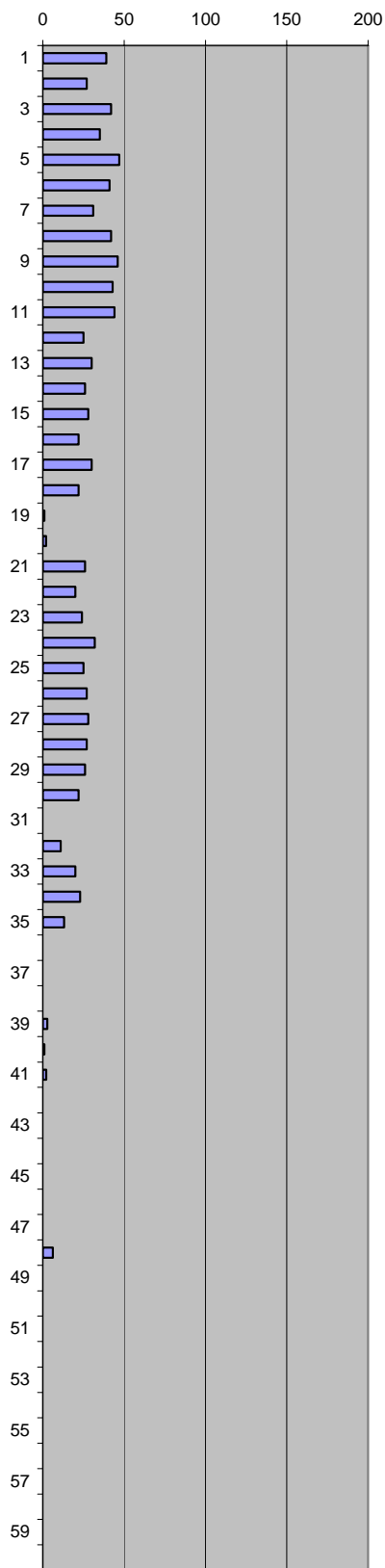


Company: DONG Energy Well: Gwen-2, core 1
 Subject: Miniperm. Data 13943'50" - 13946'50"

Top box 16 4249.98 m

Flowm 1: small Flowm 2: medium
 Upstream P : 2.8 bar 2.8 bar

Depth, m	Flowm 1	Flowm 2	Mean flow	Comments
4249.995		39	39	
4250.010		27	27	
4250.025		42	42	
4250.040		35	35	
4250.055		47	47	
4250.070		41	41	
4250.085		31	31	
4250.100		42	42	
4250.115		46	46	
4250.130		43	43	plug 44
4250.145		44	44	
4250.160		25	25	
4250.175		30	30	
4250.190		26	26	
4250.205		28	28	
4250.220		22	22	
4250.235		30	30	
4250.250		22	22	
4250.265	20		1	
4250.280	24		2	
4250.295	102	33	26	
4250.310		20	20	
4250.325		24	24	
4250.340		32	32	
4250.355		25	25	
4250.370		27	27	
4250.385		28	28	
4250.400		27	27	
4250.415		26	26	
4250.430		22	22	plug 45
4250.445				nd
4250.460		11	11	
4250.475		20	20	
4250.490		23	23	
4250.505		13	13	
4250.520	1		0	
4250.535	15		0	
4250.550	8		0	
4250.565	28		3	
4250.580	20		1	
4250.595	25		2	
4250.610	13		0	
4250.625	14		0	
4250.640	15		0	
4250.655	13		0	
4250.670	9		0	
4250.685	15		0	
4250.700	43		6	frc
4250.715				nd
4250.730	11		0	plug 46
4250.745	9		0	
4250.760	8		0	
4250.775	10		0	
4250.790	12		0	
4250.805	13		0	
4250.820	10		0	
4250.835	9		0	
4250.850	9		0	
4250.865	9		0	
4250.880	12		0	btm

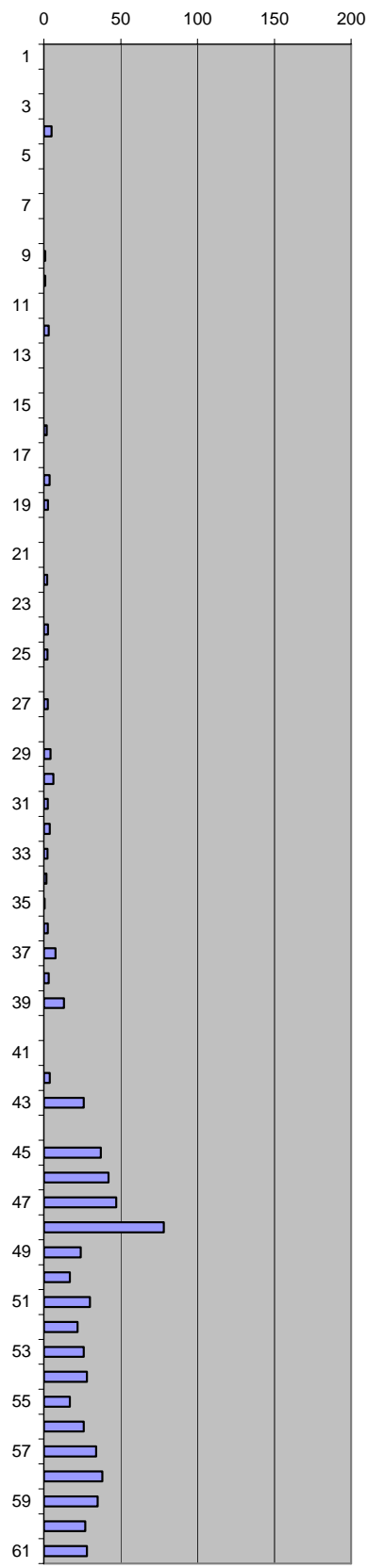


Company: DONG Energy Well: Gwen-2, core 1
 Subject: Miniperm. Data 13946'50" - 13949'50"

Top box 17 4250.895 m

Flowm 1: small Flowm 2: medium
 Upstream P : 2.8 bar 2.8 bar

Depth, m	Flowm 1	Flowm 2	Mean flow	Comments
4250.910	9		0	
4250.925	7		0	
4250.940	4		0	
4250.955	38		5	
4250.970	10		0	
4250.985	10		0	
4251.000	12		0	
4251.015	12		0	
4251.030	19		1	plug 6V
4251.045	19		1	plug 47
4251.060				nd
4251.075	30		3	
4251.090	17		0	
4251.105	9		0	
4251.120	11		0	
4251.135	24		2	
4251.150	11		0	
4251.165	32		4	
4251.180	28		3	
4251.195	11		0	
4251.210	9		0	
4251.225	25		2	
4251.240	16		0	
4251.255	28		3	
4251.270	26		2	
4251.285	11		0	
4251.300	27		3	
4251.315	17		0	
4251.330	35		4	plug
4251.345	44		6	plug 48
4251.360	27		3	plug
4251.375	33		4	plug
4251.390	26		2	
4251.405	23		2	
4251.420	18		1	
4251.435	27		3	
4251.450	50		8	
4251.465	30		3	
4251.480	75		13	
4251.495	15		0	
4251.510	13		0	
4251.525	33		4	
4251.540	130	26	26	
4251.555				nd
4251.570		37	37	
4251.585		42	42	
4251.600		47	47	
4251.615		78	78	
4251.630		24	24	
4251.645		17	17	plug 49
4251.660		30	30	
4251.675		22	22	
4251.690		26	26	
4251.705		28	28	
4251.720		17	17	
4251.735		26	26	
4251.750		34	34	
4251.765		38	38	
4251.780		35	35	
4251.795		27	27	
4251.810		28	28	btm

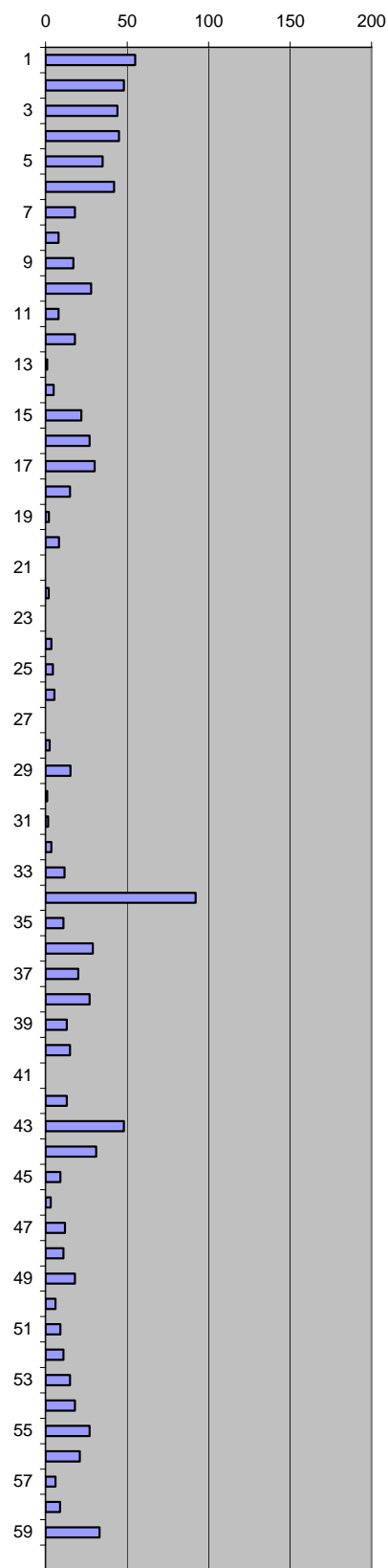


Company: DONG Energy Well: Gwen-2, core 1
 Subject: Miniperm. Data 13949'50" - 13952'50"

Top box 18 4251.81 m

Flowm 1: small Flowm 2: medium
 Upstream P : 2.8 bar 2.8 bar

Depth, m	Flowm 1	Flowm 2	Mean flow	Comments
4251.825		55	55	
4251.840		48	48	
4251.855		44	44	
4251.870		45	45	
4251.885		35	35	
4251.900		42	42	
4251.915		18	18	
4251.930		8	8	
4251.945		17	17	plug
4251.960		28	28	plug 50
4251.975		8	8	
4251.990		18	18	
4252.005	10	2	1	
4252.020		5	5	
4252.035		22	22	
4252.050		27	27	
4252.065		30	30	
4252.080		15	15	
4252.095	21	2	2	
4252.110	53		8	
4252.125	17		0	
4252.140	24		2	
4252.155	17		0	
4252.170	31		3	
4252.185	36		5	
4252.200	40		5	
4252.215	10		0	
4252.230	27		3	plug
4252.245	85		15	plug
4252.260	20		1	plug51
4252.275	23		2	plug
4252.290	31		3	
4252.305	68		12	nxt plug
4252.320		92	92	plug
4252.335	80	8	11	
4252.350		29	29	
4252.365		20	20	
4252.380		27	27	
4252.395		13	13	
4252.410		15	15	
4252.425				nd
4252.440		13	13	
4252.455		48	48	
4252.470		31	31	
4252.485		9	9	
4252.500	30	3	3	
4252.515		12	12	
4252.530		11	11	
4252.545		18	18	
4252.560		6	6	plug 52
4252.575		9	9	plug
4252.590		11	11	
4252.605		15	15	
4252.620		18	18	
4252.635		27	27	
4252.650		21	21	
4252.665		6	6	
4252.680	56		9	
4252.695		33	33	
4252.710				btm

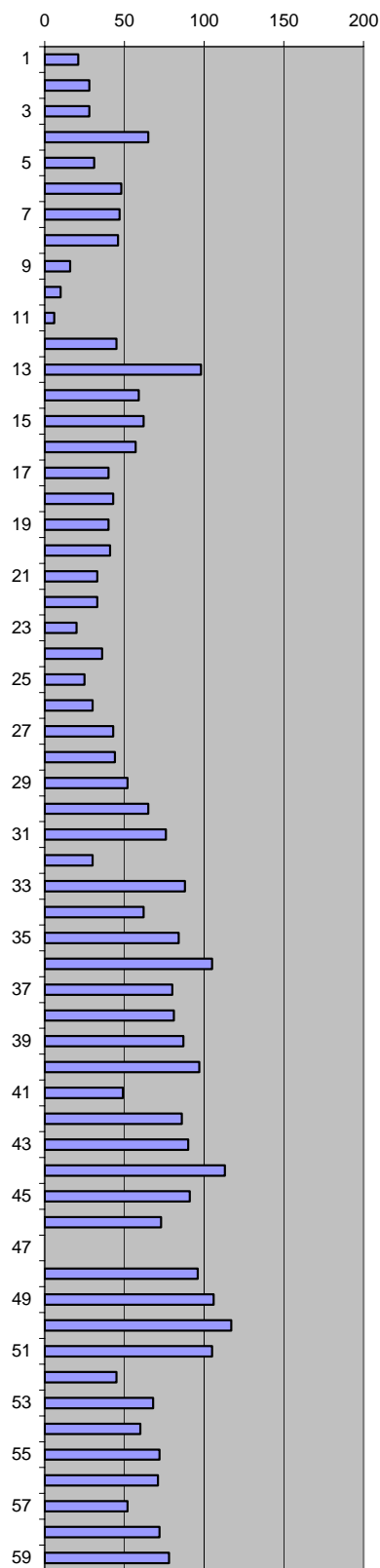


Company: DONG Energy Well: Gwen-2, core 1
 Subject: Miniperm. Data 13952'50" - 13955'50"

Top box 19 4252.72 m

Flowm 1: small Flowm 2: medium
 Upstream P : 2.8 bar 2.8 bar

Depth, m	Flowm 1	Flowm 2	Mean flow	Comments
4252.735		21	21	
4252.750		28	28	
4252.765		28	28	
4252.780		65	65	
4252.795		31	31	
4252.810		48	48	
4252.825		47	47	
4252.840		46	46	
4252.855		16	16	
4252.870		10	10	plug 53
4252.885		6	6	
4252.900		45	45	
4252.915		98	98	
4252.930		59	59	
4252.945		62	62	
4252.960		57	57	
4252.975		40	40	
4252.990		43	43	
4253.005		40	40	
4253.020		41	41	
4253.035		33	33	
4253.050		33	33	
4253.065		20	20	
4253.080		36	36	
4253.095		25	25	
4253.110		30	30	
4253.125		43	43	
4253.140		44	44	
4253.155		52	52	
4253.170		65	65	plug 54
4253.185		76	76	nxt plug
4253.200		30	30	
4253.215		88	88	
4253.230		62	62	
4253.245		84	84	
4253.260		105	105	
4253.275		80	80	
4253.290		81	81	
4253.305		87	87	
4253.320		97	97	
4253.335		49	49	
4253.350		86	86	
4253.365		90	90	
4253.380		113	113	
4253.395		91	91	
4253.410		73	73	
4253.425				nd
4253.440		96	96	nxt plug
4253.455		106	106	plug
4253.470		117	117	plug 55
4253.485		105	105	nxt plug
4253.500		45	45	
4253.515		68	68	
4253.530		60	60	
4253.545		72	72	
4253.560		71	71	
4253.575		52	52	
4253.590		72	72	
4253.605		78	78	btm

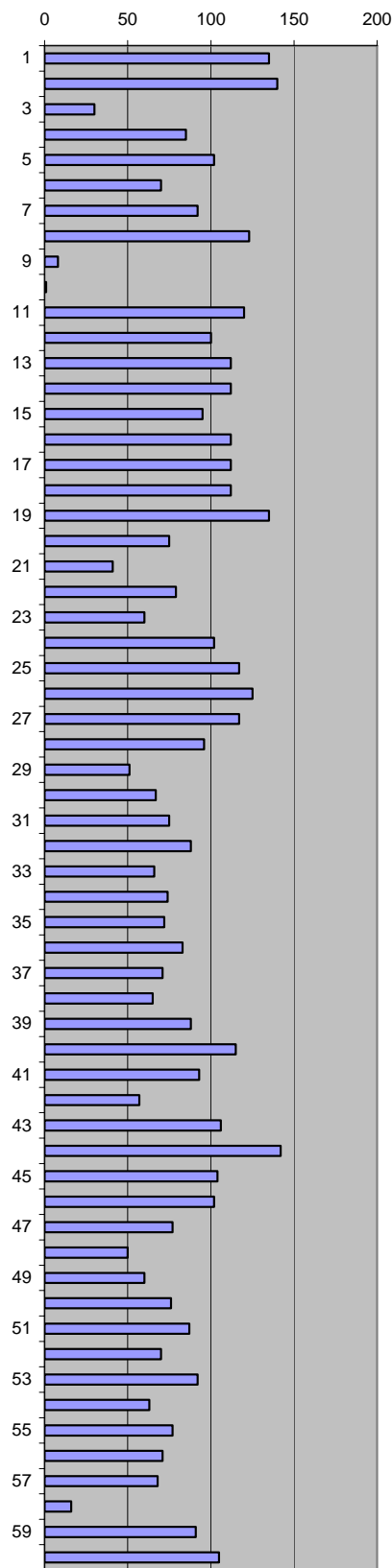


Company: DONG Energy Well: Gwen-2, core 1
 Subject: Miniperm. Data 13955'50" - 13958'50"

Top box 20 4253.635 m

Flowm 1: small Flowm 2: medium
 Upstream P : 2.8 bar 2.8 bar

Depth, m	Flowm 1	Flowm 2	Mean flow	Comments
4253.650		135	135	
4253.665		140	140	
4253.680		30	30	
4253.695		85	85	
4253.710		102	102	
4253.725		70	70	
4253.740		92	92	
4253.755		123	123	nxt plug
4253.770		8	8	
4253.785		1	1	
4253.800		120	120	plug 56
4253.815		100	100	
4253.830		112	112	
4253.845		112	112	
4253.860		95	95	
4253.875		112	112	
4253.890		112	112	
4253.905		112	112	
4253.920		135	135	
4253.935		75	75	
4253.950		41	41	
4253.965		79	79	
4253.980		60	60	
4253.995		102	102	
4254.010		117	117	
4254.025		125	125	
4254.040		117	117	
4254.055		96	96	
4254.070		51	51	
4254.085		67	67	plug 57
4254.100		75	75	
4254.115		88	88	
4254.130		66	66	
4254.145		74	74	
4254.160		72	72	
4254.175		83	83	
4254.190		71	71	
4254.205		65	65	
4254.220		88	88	
4254.235		115	115	
4254.250		93	93	
4254.265		57	57	
4254.280		106	106	
4254.295		142	142	
4254.310		104	104	
4254.325		102	102	
4254.340		77	77	
4254.355		50	50	
4254.370		60	60	
4254.385		76	76	plug 58
4254.400		87	87	
4254.415		70	70	
4254.430		92	92	
4254.445		63	63	
4254.460		77	77	
4254.475		71	71	
4254.490		68	68	
4254.505		16	16	
4254.520		91	91	
4254.535		105	105	btm

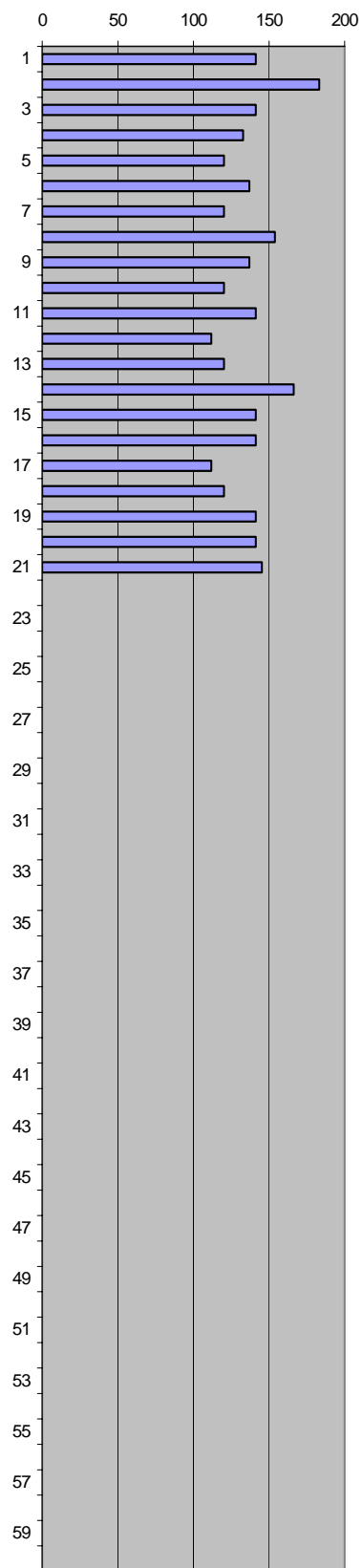


Company: DONG Energy Well: Gwen-2, core 1
 Subject: Miniperm. Data 13958'50" - 13959'58"

Top box 21 4254.55 m

Flowm 1: small	Flowm 2: medium	Flowm 3: large
Upstream P : 2.8 bar	2.8 bar	2.8 bar

Depth, m	Flowm 1	Flowm 2	Flowm 3	Mean flow	Comments
4254.565			3.5	141	
4254.580			4.5	183	
4254.595			3.5	141	
4254.610			3.3	133	
4254.625			3.0	120	
4254.640			3.4	137	
4254.655			3.0	120	
4254.670			3.8	154	
4254.685			3.4	137	
4254.700			3.0	120	plug 59
4254.715			3.5	141	
4254.730			2.8	112	
4254.745			3.0	120	
4254.760			4.1	166	
4254.775			3.5	141	
4254.790			3.5	141	
4254.805			2.8	112	
4254.820			3.0	120	
4254.835			3.5	141	
4254.850			3.5	141	
4254.865			3.6	145	
4254.880					nd
4254.895					btm

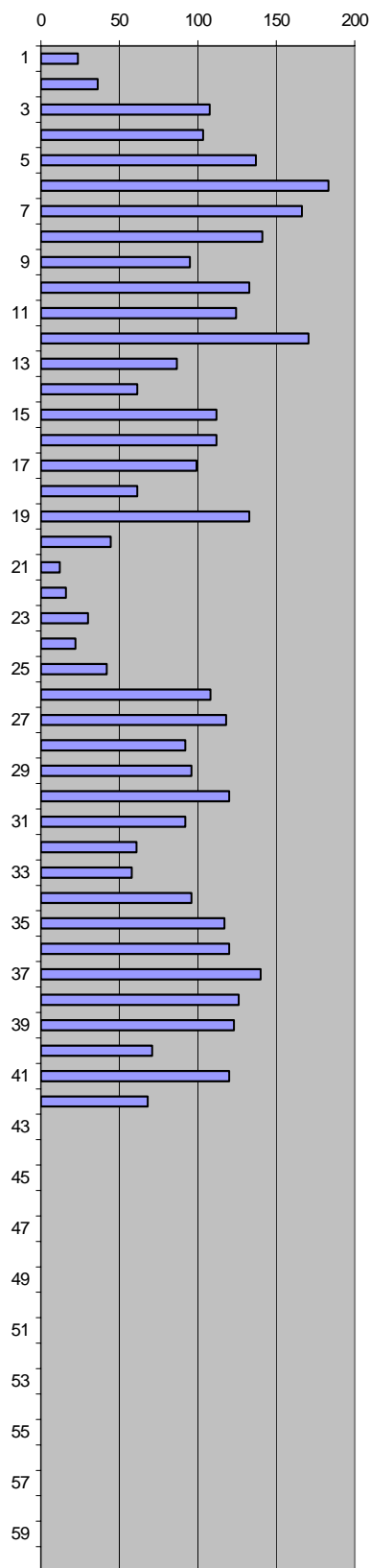


Company: DONG Energy Well: Gwen-2, core 1
 Subject: Miniperm. Data 13959'58" - 13961'66"

Top box 22b 4254.88 m

Flowm 1: small Flowm 2: medium Flowm 3: medium
 Upstream P: 2.8 bar 2.8 bar 2.8 bar

Depth, m	Flowm 1	Flowm 2	Flowm 3	Mean flow	Comments
4254.895			0.7	24	alu foil
4254.910			1	36	alu foil
4254.925			2.7	108	
4254.940			2.6	103	
4254.955			3.4	137	
4254.970			4.5	183	plug
4254.985			4.1	166	plug
4255.000			3.5	141	plug
4255.015			2.4	95	
4255.030			3.3	133	plug 7V
4255.045			3.1	124	plug 60
4255.060			4.2	171	nxt plug
4255.075			2.2	87	
4255.090			1.6	61	
4255.105			2.8	112	
4255.120			2.8	112	
4255.135			2.5	99	
4255.150			1.6	61	
4255.165			3.3	133	
4255.180			1.2	45	
4255.195		9	0.5	12	
4255.210		16		16	
4255.225		30		30	
4255.240		22		22	
4255.255		42		42	
4255.270		100	2.9	108	
4255.285		120	2.9	118	nxt plug
4255.300		92		92	plug
4255.315		96		96	plug 61
4255.330		120		120	nxt plug
4255.345		92		92	
4255.360		61		61	
4255.375		58		58	
4255.390		96		96	
4255.405		117		117	
4255.420		120		120	
4255.435		138	3.5	140	
4255.450		132	3	126	
4255.465		123		123	
4255.480		71		71	
4255.495		120		120	
4255.510		68		68	btm

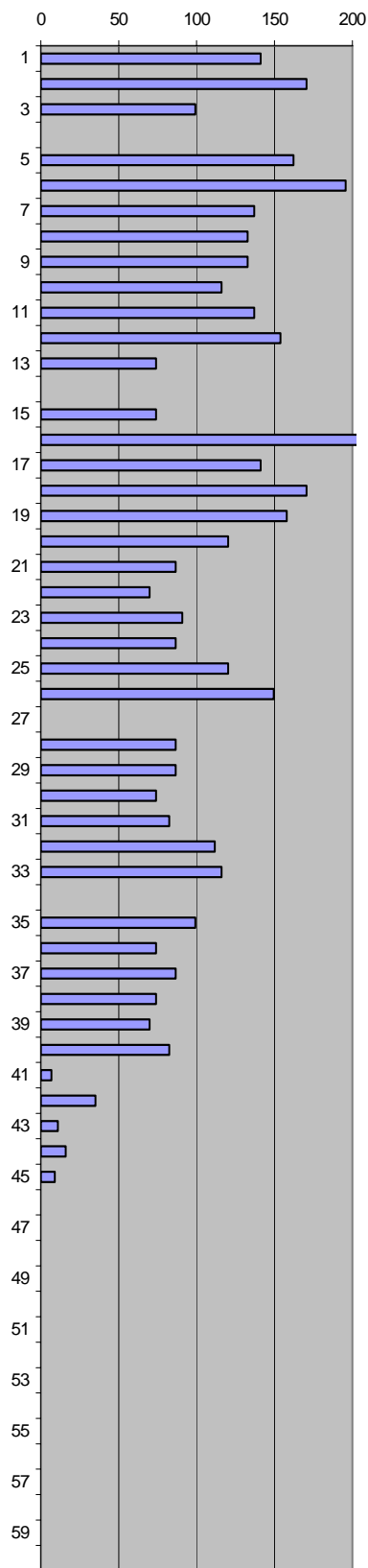


Company: DONG Energy Well: Gwen-2, core 2
 Subject: Miniperm. Data 13961'66" - 13964'50"

Top box 1 4255.515 m

Flowm 1: small	Flowm 2: medium	Flowm 3: large
Upstream P : 2.8 bar	2.8 bar	2.8 bar

Depth, m	Flowm 1	Flowm 2	Flowm 3	Mean flow	Comments
4255.530			3.5	141	
4255.545			4.2	171	
4255.560			2.5	99	
4255.575					nd
4255.590			4	162	
4255.605			4.8	196	
4255.620			3.4	137	
4255.635			3.3	133	
4255.650			3.3	133	
4255.665			2.9	116	plug 62
4255.680			3.4	137	
4255.695			3.8	154	
4255.710			1.9	74	
4255.725					nd
4255.740			1.9	74	
4255.755			6.8	280	
4255.770			3.5	141	
4255.785			4.2	171	
4255.800			3.9	158	
4255.815			3	120	
4255.830			2.2	87	
4255.845			1.8	70	
4255.860			2.3	91	
4255.875			2.2	87	
4255.890			3	120	plug
4255.905			3.7	150	plug
4255.920					nd
4255.935			2.2	87	
4255.950			2.2	87	
4255.965			1.9	74	plug 63
4255.980			2.1	82	
4255.995			2.8	112	
4256.010			2.9	116	
4256.025					nd
4256.040			2.5	99	
4256.055			1.9	74	
4256.070			2.2	87	
4256.085			1.9	74	
4256.100			1.8	70	
4256.115			2.1	82	
4256.130			0.3	7	
4256.145		35		35	
4256.160		11		11	
4256.175		16		16	
4256.190		9		9	
4256.205	7			0	plug
4256.220	6			0	plug
4256.235	3			0	
4256.250	6			0	
4256.265	5			0	plug 64
4256.280	8			0	
4256.295	6			0	
4256.310	4			0	
4256.325	6			0	btm

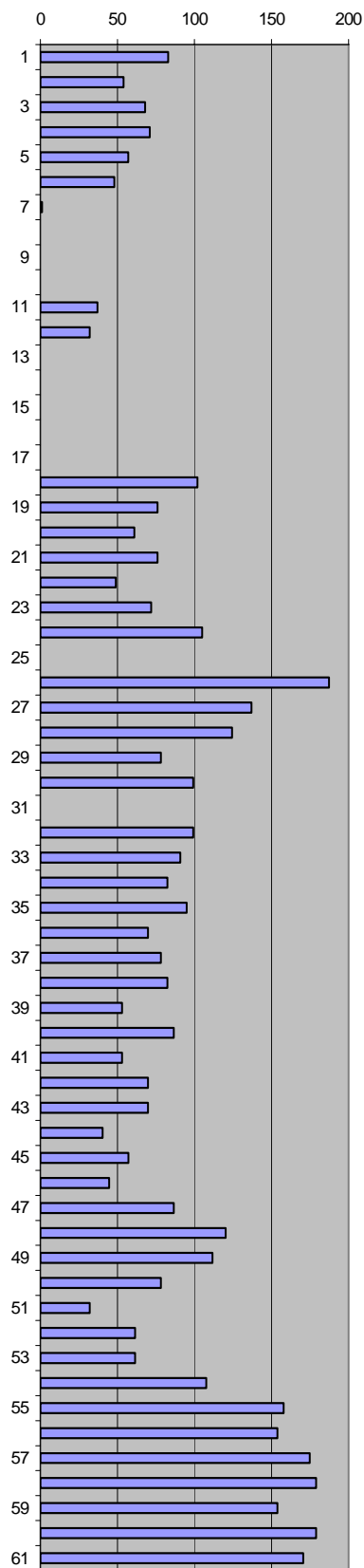


Company: DONG Energy Well: Gwen-2, core 2
 Subject: Miniperf. Data 13964'50" - 13967'50"

Top box 2 4256.38 m

Flowm 1: small	Flowm 2: medium	Flowm 3: large
Upstream P : 2.8 bar	2.8 bar	2.8 bar

Depth, m	Flowm 1	Flowm 2	Flowm 3	Mean flow	Comments
4256.395		83		83	plug
4256.410		55	1.4	54	plug
4256.425		68		68	nxt plug
4256.440		71		71	plug
4256.455		57		57	plug
4256.470		48		48	nxt plug
4256.485	6	1		1	
4256.500	3	0		0	
4256.515	3			0	
4256.530					nd,plug 65
4256.545		37		37	plug
4256.560		32		32	plug
4256.575	15			0	
4256.590	9			0	
4256.605	2			0	
4256.620	3			0	
4256.635	3			0	
4256.650		102		102	
4256.665		76		76	
4256.680		61		61	
4256.695		76		76	
4256.710		49		49	
4256.725		72		72	
4256.740		105		105	
4256.755					nd
4256.770			4.6	187	
4256.785			3.4	137	
4256.800			3.1	124	
4256.815			2	78	
4256.830			2.5	99	plug 66
4256.845					nd
4256.860			2.5	99	
4256.875			2.3	91	
4256.890			2.1	82	
4256.905			2.4	95	
4256.920			1.8	70	
4256.935			2	78	
4256.950			2.1	82	
4256.965			1.4	53	
4256.980			2.2	87	
4256.995			1.4	53	
4257.010			1.8	70	
4257.025			1.8	70	
4257.040			1.1	40	
4257.055			1.5	57	
4257.070			1.2	45	
4257.085			2.2	87	
4257.100			3	120	
4257.115			2.8	112	
4257.130			2	78	plug 67
4257.145			0.9	32	
4257.160			1.6	61	
4257.175			1.6	61	
4257.190			2.7	108	
4257.205			3.9	158	
4257.220			3.8	154	
4257.235			4.3	175	
4257.250			4.4	179	
4257.265			3.8	154	
4257.280			4.4	179	
4257.295			4.2	171	btm

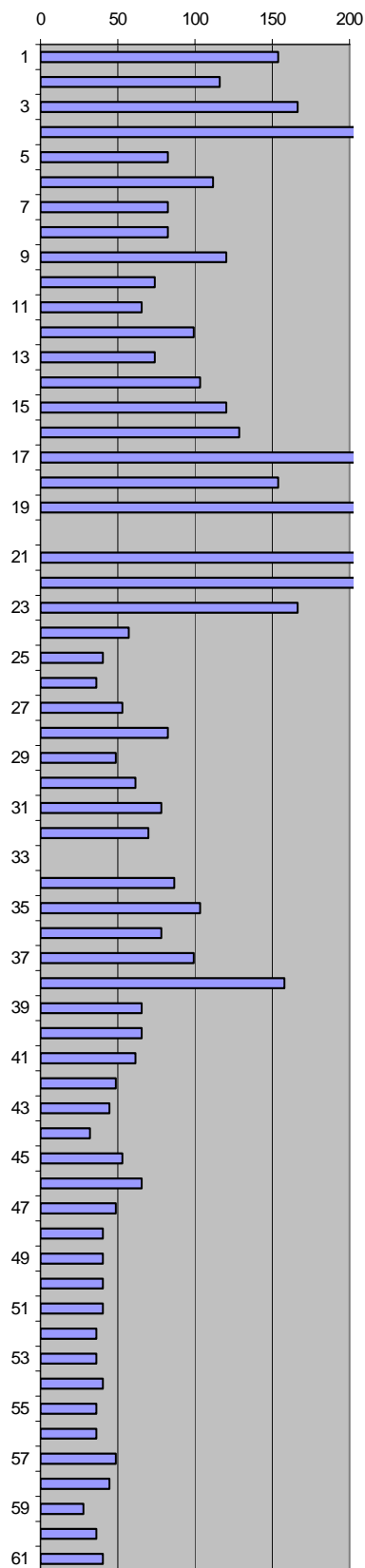


Company: DONG Energy Well: Gwen-2, core 2
 Subject: Miniperm. Data 13967'50" - 13970'50"

Top box 3 4257.295 m

Flowm 1: small	Flowm 2: medium	Flowm 3: large
Upstream P: 2.8 bar	2.8 bar	2.8 bar

Depth, m	Flowm 1	Flowm 2	Flowm 3	Mean flow	Comments
4257.310			3.8	154	
4257.325			2.9	116	plug68
4257.340			4.1	166	plug
4257.355			5.4	221	plug
4257.370			2.1	82	
4257.385			2.8	112	
4257.400			2.1	82	
4257.415			2.1	82	
4257.430			3	120	nxt plug
4257.445			1.9	74	plug 69
4257.460			1.7	66	plug
4257.475			2.5	99	nxt plug
4257.490			1.9	74	
4257.505			2.6	103	
4257.520			3	120	
4257.535			3.2	129	
4257.550			5	204	
4257.565			3.8	154	
4257.580			6.6	271	edge
4257.595					nd
4257.610			8	330	edge
4257.625			8.1	334	
4257.640			4.1	166	
4257.655			1.5	57	
4257.670			1.1	40	
4257.685			1	36	
4257.700			1.4	53	
4257.715			2.1	82	
4257.730			1.3	49	
4257.745			1.6	61	plug 70
4257.760			2	78	
4257.775			1.8	70	
4257.790					nd
4257.805			2.2	87	
4257.820			2.6	103	
4257.835			2	78	
4257.850			2.5	99	
4257.865			3.9	158	
4257.880			1.7	66	
4257.895			1.7	66	
4257.910			1.6	61	
4257.925			1.3	49	
4257.940			1.2	45	
4257.955			0.9	32	
4257.970			1.4	53	
4257.985			1.7	66	
4258.000			1.3	49	
4258.015			1.1	40	
4258.030			1.1	40	
4258.045			1.1	40	plug71
4258.060			1.1	40	
4258.075			1	36	
4258.090			1	36	
4258.105			1.1	40	
4258.120			1	36	
4258.135			1	36	
4258.150			1.3	49	
4258.165			1.2	45	
4258.180			0.8	28	
4258.195			1	36	
4258.210			1.1	40	btm

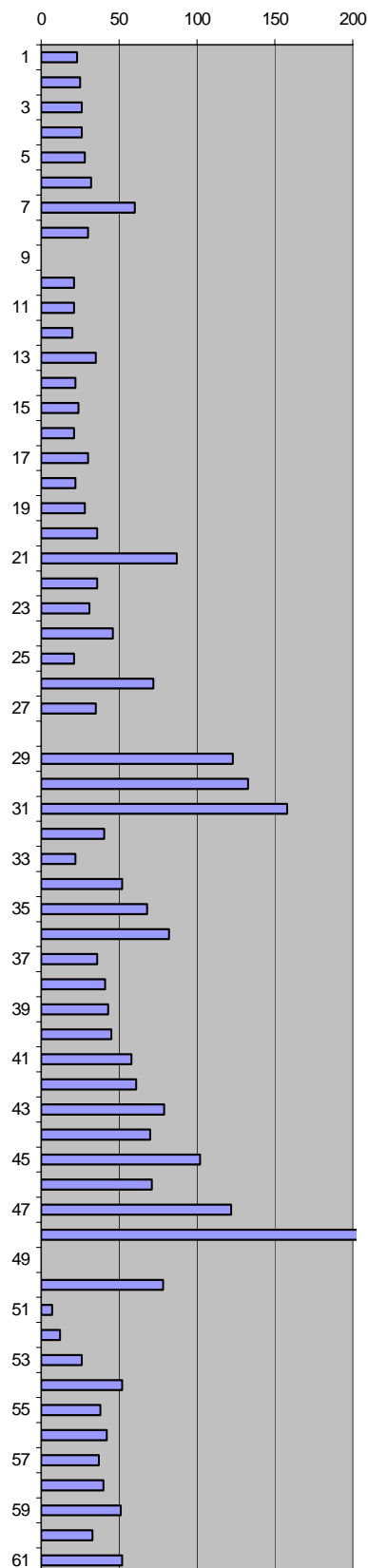


Company: DONG Energy Well: Gwen-2, core 2
 Subject: Miniperm. Data 13970'50" - 13973'50"

Top box 4 4258.21 m

Flowm 1: small	Flowm 2: medium	Flowm 3: large
Upstream P: 2.8 bar	2.8 bar	2.8 bar

Depth, m	Flowm 1	Flowm 2	Flowm 3	Mean flow	Comments
4258.225		18	0.8	23	
4258.240		25		25	
4258.255		26		26	
4258.270		26		26	
4258.285		28		28	
4258.300		32		32	
4258.315		60		60	edge
4258.330		30		30	
4258.345					nd, nxt plug
4258.360		21		21	plug 72
4258.375		21		21	
4258.390		20		20	
4258.405		35		35	
4258.420		22		22	
4258.435		24		24	
4258.450		21		21	
4258.465		30		30	
4258.480		22		22	
4258.495		28		28	
4258.510		36		36	
4258.525		87		87	
4258.540		36		36	
4258.555		31		31	
4258.570		46		46	
4258.585		21		21	
4258.600		72		72	
4258.615		35		35	edge
4258.630					nd
4258.645		142	2.6	123	edge
4258.660			3.3	133	plug 73
4258.675			3.9	158	plug
4258.690			1.1	40	
4258.705		13	0.8	22	
4258.720		52		52	
4258.735		68		68	
4258.750		82		82	
4258.765		36		36	
4258.780		41		41	
4258.795		43		43	
4258.810		45		45	
4258.825		58		58	
4258.840		61		61	
4258.855		79		79	
4258.870		70		70	
4258.885		102		102	
4258.900		71		71	
4258.915		122		122	
4258.930			5.1	208	edge
4258.945					nd
4258.960			2	78	plug 74
4258.975		7		7	
4258.990		12		12	
4259.005		26		26	
4259.020		52		52	
4259.035		38		38	
4259.050		42		42	
4259.065		37		37	
4259.080		40		40	
4259.095		51		51	
4259.110		33		33	
4259.125		52		52	btm

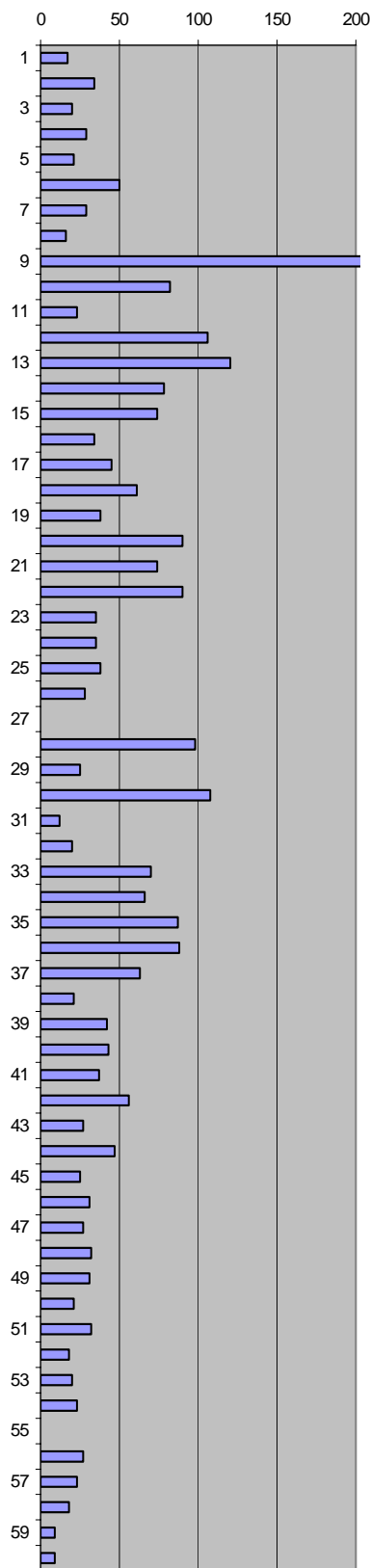


Company: DONG Energy Well: Gwen-2, core 2
 Subject: Miniperm. Data 13973'50" - 13976'50"

Top box 5 4259.125 m

Flowm 1: small	Flowm 2: medium	Flowm 3: large
Upstream P: 2.8 bar	2.8 bar	2.8 bar

Depth, m	Flowm 1	Flowm 2	Flowm 3	Mean flow	Comments
4259.140		17		17	
4259.155		34		34	
4259.170		20		20	
4259.185		29		29	
4259.200		21		21	
4259.215		50		50	
4259.230		29		29	
4259.245		16		16	
4259.260			7	288	plug 75
4259.275		93	1.8	82	edge
4259.290		23		23	
4259.305		106		106	
4259.320			3	120	
4259.335			2	78	
4259.350			1.9	74	
4259.365		36	0.9	34	
4259.380		45		45	
4259.395		61		61	
4259.410		38		38	
4259.425		90		90	
4259.440		74		74	
4259.455		90		90	
4259.470		35		35	
4259.485		35		35	
4259.500		38		38	
4259.515		28		28	
4259.530					nd
4259.545		98		98	
4259.560		25		25	
4259.575			2.7	108	plug 76
4259.590		12		12	plug
4259.605		20		20	plug
4259.620		70		70	nxt plug
4259.635		66		66	
4259.650		87		87	
4259.665		88		88	
4259.680		63		63	
4259.695		21		21	
4259.710		42		42	
4259.725		43		43	
4259.740		37		37	
4259.755		56		56	
4259.770		27		27	
4259.785		47		47	
4259.800		25		25	
4259.815		31		31	
4259.830		27		27	
4259.845		32		32	
4259.860		31		31	
4259.875		21		21	plug 77
4259.890		32		32	
4259.905		18		18	
4259.920		20		20	
4259.935		23		23	
4259.950					nd
4259.965		27		27	
4259.980		23		23	
4259.995		18		18	
4260.010		9		9	
4260.025		9		9	btm

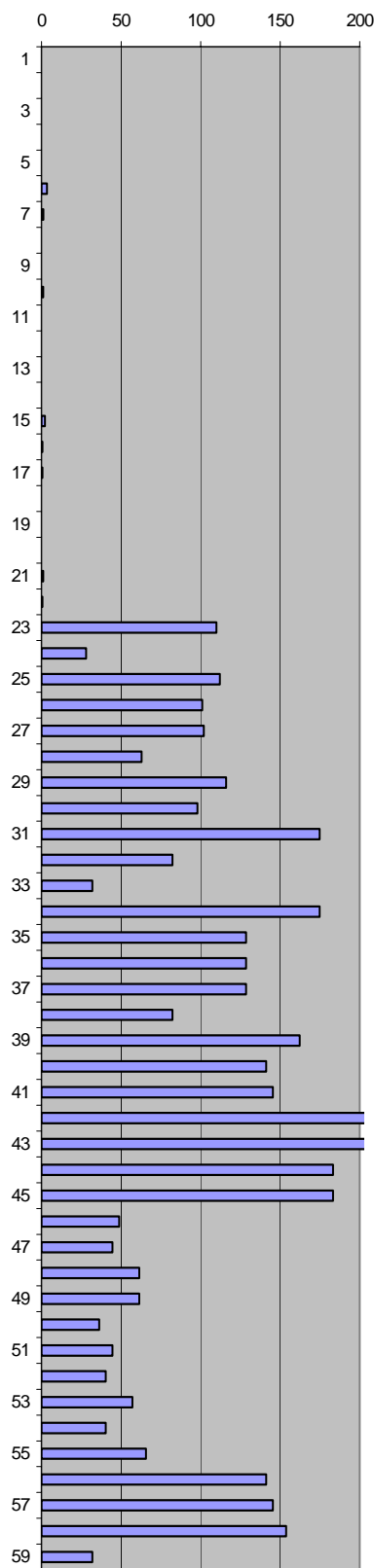


Company: DONG Energy Well: Gwen-2, core 2
 Subject: Miniperm. Data 13976'50" - 13979'50"

Top box 6 4260.035 m

Flowm 1: small	Flowm 2: medium	Flowm 3: large
Upstream P : 2.8 bar	2.8 bar	2.8 bar

Depth, m	Flowm 1	Flowm 2	Flowm 3	Mean flow	Comments
4260.050	9			0	
4260.065	15			0	
4260.080	10			0	
4260.095	6			0	
4260.110	6			0	
4260.125	31			3	
4260.140	21			1	
4260.155	9			0	
4260.170	8			0	
4260.185	20			1	
4260.200	9			0	plug 78
4260.215	16			0	
4260.230	9			0	
4260.245	7			0	
4260.260	25			2	
4260.275	18			1	
4260.290	18			1	
4260.305	8			0	
4260.320	10			0	
4260.335	9			0	
4260.350	20			1	
4260.365	18			1	
4260.380		110		110	nxt plug
4260.395		28		28	plug
4260.410		112		112	plug
4260.425		101		101	
4260.440		102		102	
4260.455		63		63	
4260.470		116		116	plug
4260.485		98		98	plug 79
4260.500			4.3	175	nxt plug
4260.515			2.1	82	
4260.530			0.9	32	
4260.545			4.3	175	
4260.560			3.2	129	
4260.575			3.2	129	
4260.590			3.2	129	
4260.605			2.1	82	
4260.620			4.0	162	nxt plug
4260.635			3.5	141	plug
4260.650			3.6	145	plug
4260.665			6.7	276	nxt plug
4260.680			7.6	313	
4260.695			4.5	183	
4260.710			4.5	183	
4260.725			1.3	49	
4260.740			1.2	45	
4260.755			1.6	61	
4260.770			1.6	61	
4260.785			1.0	36	plug 80
4260.800			1.2	45	
4260.815			1.1	40	
4260.830			1.5	57	
4260.845			1.1	40	
4260.860			1.7	66	
4260.875			3.5	141	
4260.890			3.6	145	
4260.905			3.8	154	
4260.920			0.9	32	btm

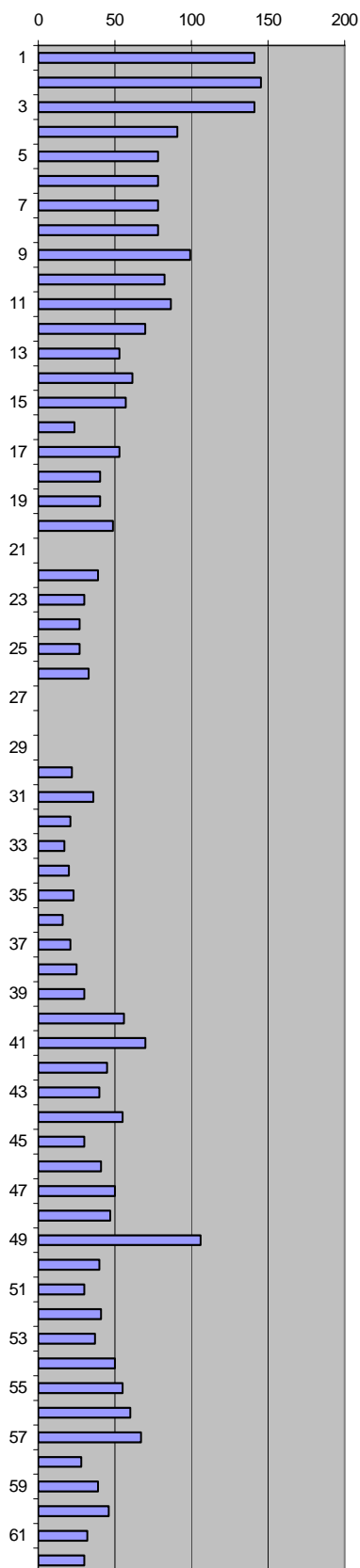


Company: DONG Energy Well: Gwen-2, core 2
 Subject: Miniperm. Data 13979'50" - 13982'50"

Top box 7 4260.95 m

Flowm 1: small	Flowm 2: medium	Flowm 3: large
Upstream P : 2.8 bar	2.8 bar	2.8 bar

Depth, m	Flowm 1	Flowm 2	Flowm 3	Mean flow	Comments
4260.965			3.5	141	
4260.980			3.6	145	
4260.995			3.5	141	
4261.010			2.3	91	
4261.025			2.0	78	
4261.040			2.0	78	
4261.055			2.0	78	
4261.070			2.0	78	
4261.085			2.5	99	
4261.100			2.1	82	plug 81
4261.115			2.2	87	
4261.130			1.8	70	
4261.145			1.4	53	
4261.160			1.6	61	
4261.175			1.5	57	
4261.190			0.7	24	
4261.205			1.4	53	
4261.220			1.1	40	
4261.235			1.1	40	
4261.250			1.3	49	
4261.265	2			0	plug9V, edge
4261.280		39		39	
4261.295		30		30	
4261.310		27		27	
4261.325		27		27	
4261.340		33		33	
4261.355	0			0	
4261.370	5			0	
4261.385	3			0	
4261.400		22		22	plug 82
4261.415		36		36	plug
4261.430		21		21	nxt plug
4261.445		17		17	
4261.460		20		20	
4261.475		23		23	
4261.490		16		16	
4261.505		21		21	
4261.520		25		25	
4261.535		30		30	
4261.550		56		56	
4261.565		70		70	
4261.580		45		45	
4261.595		40		40	
4261.610		55		55	
4261.625		30		30	
4261.640		41		41	
4261.655		50		50	
4261.670		47		47	
4261.685		106		106	
4261.700		40		40	plug 83
4261.715		30		30	
4261.730		41		41	
4261.745		37		37	
4261.760		50		50	
4261.775		55		55	
4261.790		60		60	
4261.805		67		67	
4261.820		28		28	
4261.835		39		39	
4261.850		46		46	
4261.865		32		32	
4261.880		30		30	btm

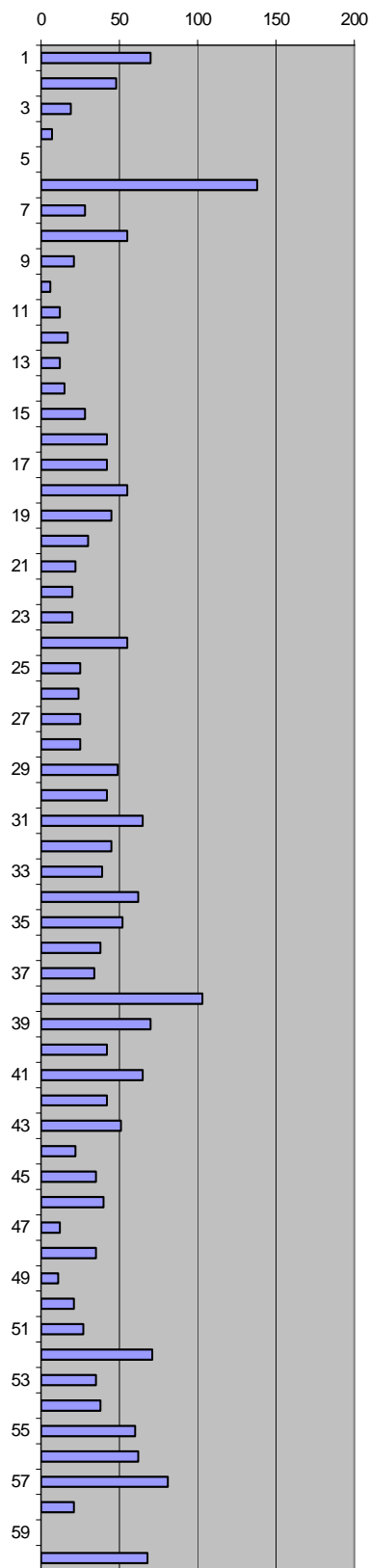


Company: DONG Energy Well: Gwen-2, core 2
 Subject: Miniperm. Data 13982'50" - 13985'50"

Top box 8 4261.865 m

Flowm 1: small	Flowm 2: medium	Flowm 3: large
Upstream P: 2.8 bar	2.8 bar	2.8 bar

Depth, m	Flowm 1	Flowm 2	Flowm 3	Mean flow	Comments
4261.880		70		70	
4261.895		48		48	
4261.910		19		19	
4261.925		7		7	
4261.940					nd
4261.955		135	3.5	138	nxt plug
4261.970		28		28	plug
4261.985		55		55	plug
4262.000		21		21	
4262.015		6		6	plug 84
4262.030		12		12	
4262.045		17		17	
4262.060		12		12	
4262.075		15		15	
4262.090		28		28	
4262.105		42		42	
4262.120		42		42	
4262.135		55		55	
4262.150		45		45	
4262.165		30		30	
4262.180		22		22	
4262.195		20		20	
4262.210		20		20	
4262.225		55		55	
4262.240		25		25	
4262.255		24		24	
4262.270		25		25	
4262.285		25		25	
4262.300		49		49	nxt plug
4262.315		42		42	plug 85
4262.330		65		65	plug
4262.345		45		45	
4262.360		39		39	
4262.375		62		62	
4262.390		52		52	
4262.405		38		38	
4262.420		34		34	
4262.435		103		103	
4262.450		70		70	
4262.465		42		42	nxt plug
4262.480		65		65	plug
4262.495		42		42	plug
4262.510		51		51	nxt plug
4262.525		22		22	
4262.540		35		35	
4262.555		40		40	
4262.570		12		12	
4262.585		35		35	
4262.600		11		11	
4262.615		21		21	plug 86
4262.630		27		27	plug
4262.645		71		71	nxt plug
4262.660		35		35	
4262.675		38		38	
4262.690		60		60	
4262.705		62		62	
4262.720		81		81	
4262.735		21		21	
4262.750	0			0	
4262.765		68		68	btm

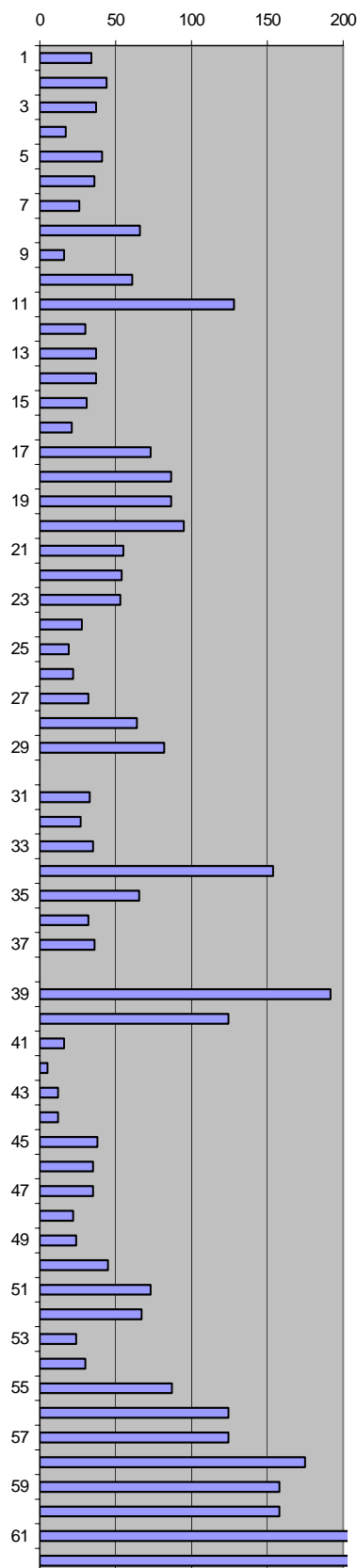


Company: DONG Energy Well: Gwen-2, core 2
 Subject: Miniperm. Data 13985'50" - 13988'50"

Top box 9 4262.78 m

Flowm 1: small	Flowm 2: medium	Flowm 3: large
Upstream P : 2.8 bar	2.8 bar	2.8 bar

Depth, m	Flowm 1	Flowm 2	Flowm 3	Mean flow	Comments
4262.795		34		34	
4262.810		44		44	
4262.825		37		37	
4262.840		17		17	
4262.855		41		41	
4262.870		36		36	
4262.885		26		26	
4262.900		66		66	nxt plug
4262.915		16		16	
4262.930		61		61	plug 87
4262.945		128		128	plug, edge
4262.960		30		30	
4262.975		37		37	
4262.990		37		37	
4263.005		31		31	
4263.020		21		21	
4263.035		73		73	
4263.050			2.2	87	
4263.065			2.2	87	
4263.080			2.4	95	
4263.095		53	1.5	55	
4263.110		52	1.5	54	nxt plug
4263.125			1.4	53	plug 1,5"
4263.140		27	0.8	28	
4263.155		19		19	
4263.170		22		22	
4263.185		32		32	
4263.200		64		64	
4263.215		82		82	edge
4263.230					nd, plug 88
4263.245		33		33	
4263.260		27		27	
4263.275		35		35	
4263.290			3.8	154	
4263.305			1.7	66	
4263.320			0.9	32	
4263.335			1	36	
4263.350					nd
4263.365			4.7	192	edge
4263.380			3.1	124	
4263.395		21	0.4	16	
4263.410		5		5	
4263.425		12		12	
4263.440		12		12	
4263.455		38		38	
4263.470		35		35	
4263.485		35		35	
4263.500		22		22	
4263.515		24		24	
4263.530		45		45	edge, plug 89
4263.545		73		73	nxt plug
4263.560		67		67	plug
4263.575		24		24	
4263.590		30		30	
4263.605		87		87	
4263.620			3.1	124	
4263.635			3.1	124	
4263.650			4.3	175	
4263.665			3.9	158	
4263.680			3.9	158	
4263.695			5.8	238	
4263.710			5.5	225	btm

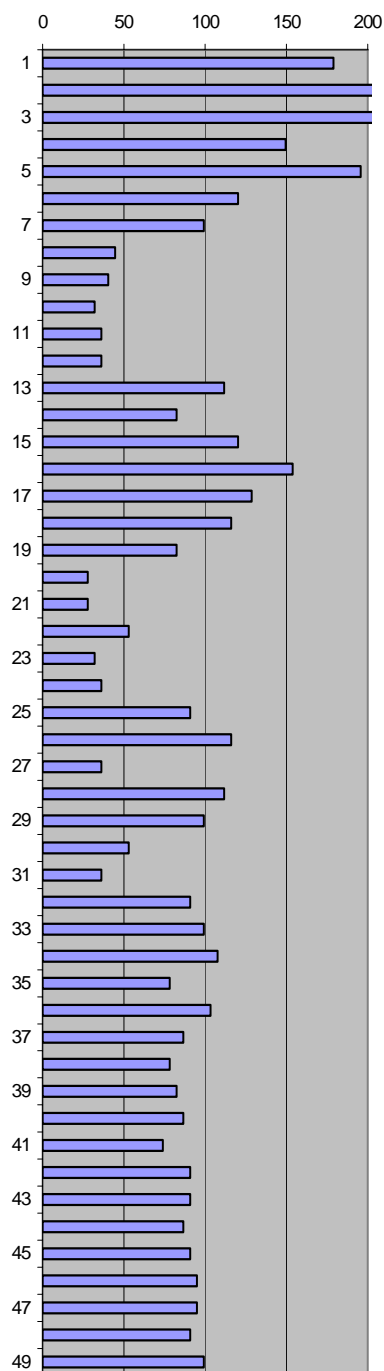


Company: DONG Energy Well: Gwen-2, core 2
 Subject: Miniperm. Data 13988'50" - 13991'00"

Flowm 1: small Flowm 2: medium Flowm 3: large
 Upstream P: 2.8 bar 2.8 bar 2.8 bar

Depth, m	Flowm 1	Flowm 2	Flowm 3	Mean flow	Comments
4263.710			4.4	179	
4263.725			5.5	225	
4263.740			5.7	234	
4263.755			3.7	150	
4263.770			4.8	196	
4263.785			3.0	120	
4263.800			2.5	99	
4263.815			1.2	45	
4263.830			1.1	40	
4263.845			0.9	32	plug 90
4263.860			1.0	36	
4263.875			1.0	36	
4263.890			2.8	112	
4263.905			2.1	82	
4263.920			3.0	120	
4263.935			3.8	154	
4263.950			3.2	129	
4263.965			2.9	116	
4263.980			2.1	82	
4263.995			0.8	28	
4264.010			0.8	28	
4264.025			1.4	53	
4264.040			0.9	32	
4264.055			1.0	36	
4264.070			2.3	91	
4264.085			2.9	116	
4264.100			1.0	36	
4264.115			2.8	112	nxt plug
4264.130			2.5	99	plug
4264.145			1.4	53	plug 91
4264.160			1.0	36	
4264.175			2.3	91	
4264.190			2.5	99	
4264.205			2.7	108	plug 10V
4264.220			2.0	78	
4264.235			2.6	103	
4264.250			2.2	87	
4264.265			2.0	78	
4264.280			2.1	82	
4264.295			2.2	87	
4264.310			1.9	74	
4264.325			2.3	91	
4264.340			2.3	91	
4264.355			2.2	87	
4264.370			2.3	91	
4264.385			2.4	95	
4264.400			2.4	95	
4264.415			2.3	91	
4264.430			2.5	99	plug 92, btm

Top box 10 4263.695 m

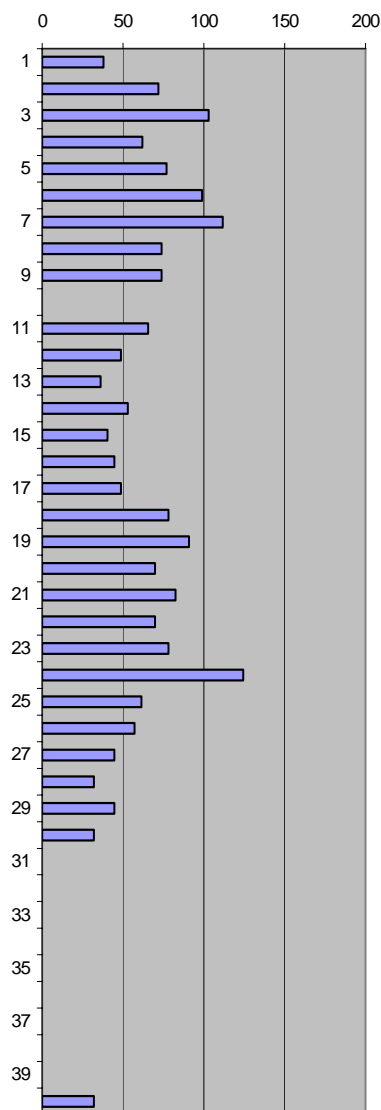


Company: DONG Energy Well: Gwen-2, core 2
 Subject: Miniperm. Data 13991'00" - 13993'50"

Top box 11 4264.455 m

Flowm 1: small	Flowm 2: medium	Flowm 3: large
Upstream P : 2.8 bar	2.8 bar	2.8 bar

Depth, m	Flowm 1	Flowm 2	Flowm 3	Mean flow	Comments
4264.470		44	0.9	38	
4264.485		72		72	
4264.500		106	2.5	103	
4264.515		62		62	
4264.530		77		77	
4264.545		102	2.4	99	
4264.560			2.8	112	
4264.575			1.9	74	
4264.590			1.9	74	
4264.605					nd, plug 93
4264.620			1.7	66	
4264.635			1.3	49	
4264.650			1.0	36	
4264.665			1.4	53	
4264.680			1.1	40	
4264.695			1.2	45	
4264.710			1.3	49	
4264.725			2.0	78	plug
4264.740			2.3	91	nxt plug
4264.755			1.8	70	
4264.770			2.1	82	nxt plug
4264.785			1.8	70	plug
4264.800			2.0	78	plug
4264.815			3.1	124	nxt plug
4264.830			1.6	61	
4264.845			1.5	57	
4264.860			1.2	45	
4264.875			0.9	32	
4264.890			1.2	45	
4264.905			0.9	32	edge, plug 94
4264.920					
4264.935					
4264.950					
4264.965					
4264.980					
4264.995					
4265.010					
4265.025					
4265.040					
4265.055			0.9	32	rubble

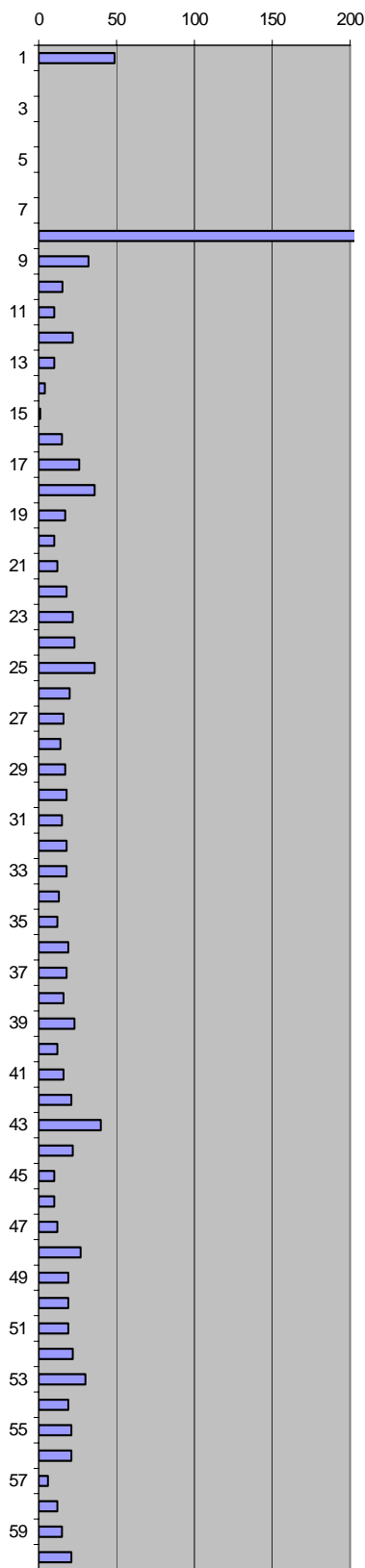


Company: DONG Energy Well: Gwen-2, core 2
 Subject: Miniperm. Data 13993'50" - 13996'50"

Top box 12 4265.22 m

Flowm 1: small	Flowm 2: medium	Flowm 3: large
Upstream P : 2.8 bar	2.8 bar	2.8 bar

Depth, m	Flowm 1	Flowm 2	Flowm 3	Mean flow	Comments
4265.235			1.3	49	rubble
4265.250					rubble
4265.265					rubble
4265.280					rubble
4265.295					rubble
4265.310					rubble
4265.325					rubble
4265.340			5	204	edge
4265.355			0.9	32	plug
4265.370			0.5	15	plug 95
4265.385		8	0.4	10	plug
4265.400		22		22	
4265.415		10		10	
4265.430	22	6		4	
4265.445	19			1	
4265.460		15		15	
4265.475		26		26	
4265.490		36		36	
4265.505		17		17	
4265.520		10		10	
4265.535		12		12	
4265.550		18		18	
4265.565		22		22	
4265.580		23		23	
4265.595		36		36	
4265.610		20		20	
4265.625		16		16	
4265.640		14		14	
4265.655		17		17	
4265.670		18		18	plug 96
4265.685		15		15	
4265.700		18		18	
4265.715		18		18	
4265.730		13		13	
4265.745		12		12	
4265.760		19		19	
4265.775		18		18	
4265.790		16		16	
4265.805		23		23	
4265.820		12		12	
4265.835		16		16	
4265.850		21		21	
4265.865		40		40	
4265.880		22		22	
4265.895		10		10	
4265.910		10		10	
4265.925		12		12	
4265.940		27		27	
4265.955		19		19	
4265.970		19		19	plug 97
4265.985		19		19	
4266.000		22		22	
4266.015		30		30	
4266.030		19		19	
4266.045		21		21	
4266.060		21		21	
4266.075		6		6	
4266.090		12		12	
4266.105		15		15	
4266.120		21		21	btm

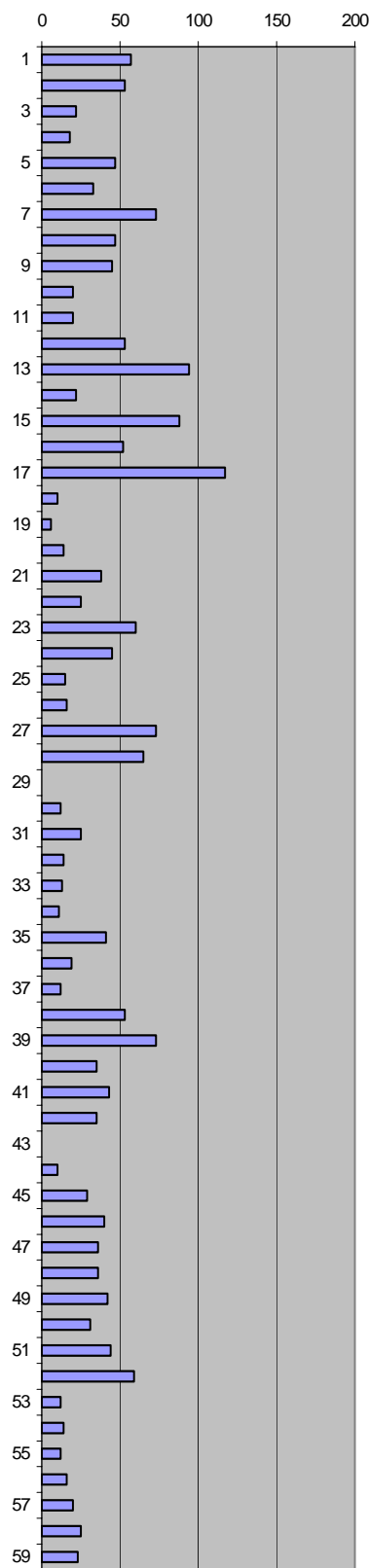


Company: DONG Energy Well: Gwen-2, core 2
 Subject: Miniperm. Data 13996'50" - 13999'50"

Top box 13 4266.135 m

Flowm 1: small	Flowm 2: medium	Flowm 3: large
Upstream P : 2.8 bar	2.8 bar	2.8 bar

Depth, m	Flowm 1	Flowm 2	Flowm 3	Mean flow	Comments
4266.150		57		57	
4266.165		53		53	
4266.180		22		22	
4266.195		18		18	
4266.210		47		47	
4266.225		33		33	
4266.240		73		73	
4266.255		47		47	
4266.270		45		45	
4266.285		20		20	plug 98
4266.300		20		20	nxt plug
4266.315		53		53	
4266.330		94		94	
4266.345		22		22	
4266.360		88		88	
4266.375		52		52	
4266.390		114	3.0	117	
4266.405		10		10	
4266.420		6		6	
4266.435		14		14	
4266.450		38		38	
4266.465		25		25	
4266.480		60		60	
4266.495		45		45	
4266.510		15		15	
4266.525		16		16	
4266.540		73		73	nxt plug
4266.555		65		65	nxt plug, edge
4266.570					nd, edge
4266.585		12		12	plug 99
4266.600		25		25	plug
4266.615		14		14	
4266.630		13		13	
4266.645		11		11	
4266.660		41		41	
4266.675		19		19	
4266.690		12		12	
4266.705		53		53	
4266.720		73		73	
4266.735		35		35	
4266.750		43		43	
4266.765		35		35	
4266.780					nd, edge
4266.795		10		10	edge
4266.810		29		29	
4266.825		40		40	
4266.840		36		36	
4266.855		36		36	
4266.870		42		42	
4266.885		31		31	plug 100
4266.900		44		44	
4266.915		59		59	
4266.930		12		12	
4266.945		14		14	
4266.960		12		12	
4266.975		16		16	
4266.990		20		20	
4267.005		25		25	
4267.020		23		23	btm

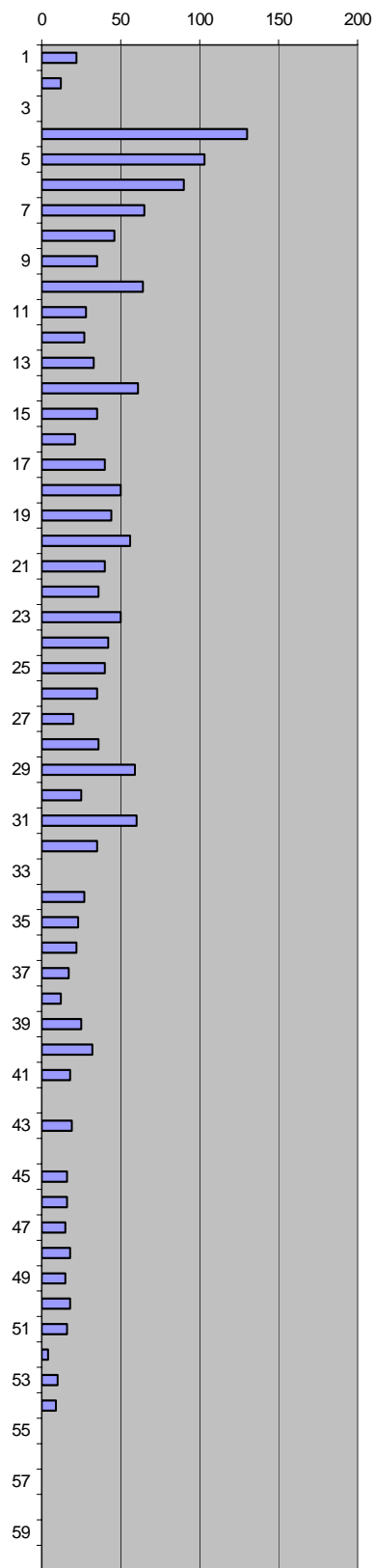


Company: DONG Energy Well: Gwen-2, core 2
 Subject: Miniperm. Data 13999'50" - 14002'50"

Top box 14 4267.05 m

Flowm 1: small	Flowm 2: medium	Flowm 3: large
Upstream P: 2.8 bar	2.8 bar	2.8 bar

Depth, m	Flowm 1	Flowm 2	Flowm 3	Mean flow	Comments
4267.065		22		22	
4267.080		12		12	
4267.095					nd, edge
4267.110		130		130	
4267.125		103		103	
4267.140		90		90	
4267.155		65		65	
4267.170		46		46	
4267.185		35		35	
4267.200		64		64	plug 101
4267.215		28		28	
4267.230		27		27	
4267.245		33		33	
4267.260		61		61	plug 11V
4267.275		35		35	
4267.290		21		21	
4267.305		40		40	
4267.320		50		50	
4267.335		44		44	
4267.350		56		56	
4267.365		40		40	
4267.380		36		36	
4267.395		50		50	
4267.410		42		42	
4267.425		40		40	
4267.440		35		35	
4267.455		20		20	
4267.470		36		36	
4267.485		60	1.5	59	plug
4267.500		25		25	plug 102
4267.515		60		60	plug
4267.530		35		35	
4267.545					nd, edge
4267.560		27		27	
4267.575		23		23	
4267.590		22		22	
4267.605		17		17	
4267.620		12		12	
4267.635		25		25	
4267.650		32		32	
4267.665		18		18	
4267.680	12			0	
4267.695	97	20		19	
4267.710					nd
4267.725		16		16	
4267.740		16		16	
4267.755		15		15	
4267.770		18		18	
4267.785		15		15	
4267.800		18		18	plug 103
4267.815		16		16	
4267.830		4		4	
4267.845		10		10	
4267.860		9		9	
4267.875	3			0	
4267.890	6			0	
4267.905	2			0	
4267.920	6			0	
4267.935	1			0	
4267.950	1			0	btm

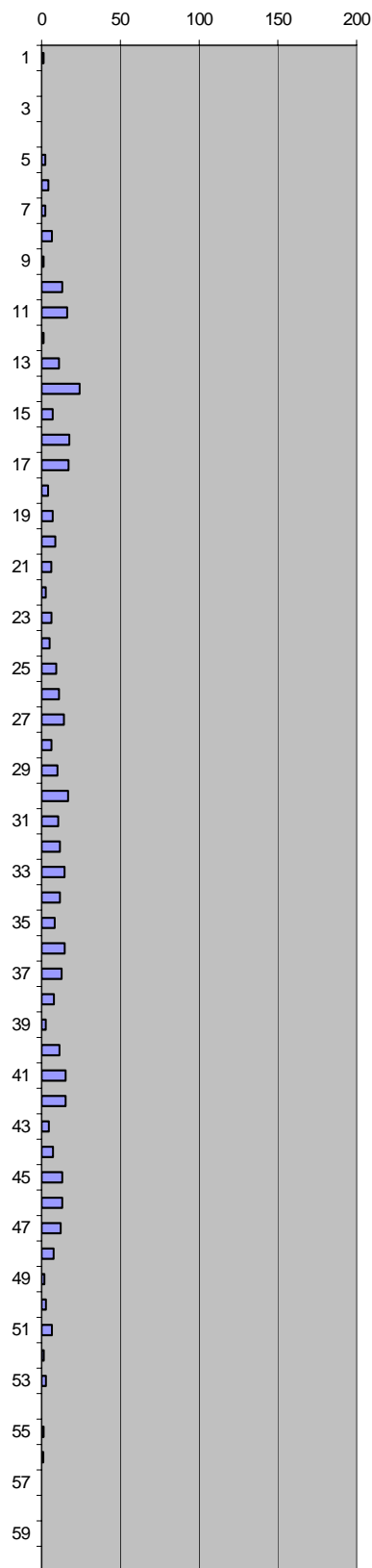


Company: DONG Energy Well: Gwen-2, core 2
 Subject: Miniperm. Data 14002'50" - 14005'50"

Top box 15 4267.96 m

Flowm 1: small	Flowm 2: medium	Flowm 3: large
Upstream P: 2.8 bar	2.8 bar	2.8 bar

Depth, m	Flowm 1	Flowm 2	Flowm 3	Mean flow	Comments
4267.975	21			1	
4267.990	16			0	
4268.005	13			0	
4268.020	15			0	
4268.035	26			2	
4268.050	35			4	
4268.065	26			2	
4268.080	45			7	
4268.095	21			1	
4268.110	75			13	plug 104
4268.125	89			16	plug
4268.140	21			1	
4268.155	65			11	
4268.170	125			24	
4268.185	47			7	
4268.200	95			18	
4268.215	97	15		17	
4268.230	34			4	
4268.245	47			7	
4268.260	55			9	
4268.275	43			6	
4268.290	27			3	
4268.305	44			6	
4268.320	38			5	
4268.335	58			9	
4268.350	65			11	
4268.365	80			14	
4268.380	44			6	
4268.395	61			10	plug
4268.410	92			17	plug 105
4268.425	63			10	plug
4268.440	68			12	plug
4268.455	81			14	nxt plug
4268.470	68			12	
4268.485	53			8	
4268.500	82			15	
4268.515	73			13	
4268.530	51			8	
4268.545	27			3	
4268.560	67			11	
4268.575	85			15	
4268.590	85			15	
4268.605	36			5	
4268.620	48			7	
4268.635	75			13	
4268.650	75			13	
4268.665	70			12	
4268.680	50			8	
4268.695	23			2	
4268.710	28			3	plug 106
4268.725	45			7	plug
4268.740	22			1	
4268.755	28			3	
4268.770	12			0	
4268.785	21			1	
4268.800	20			1	
4268.815	3			0	
4268.830	1			0	
4268.845	1			0	
4268.860	0			0	btm

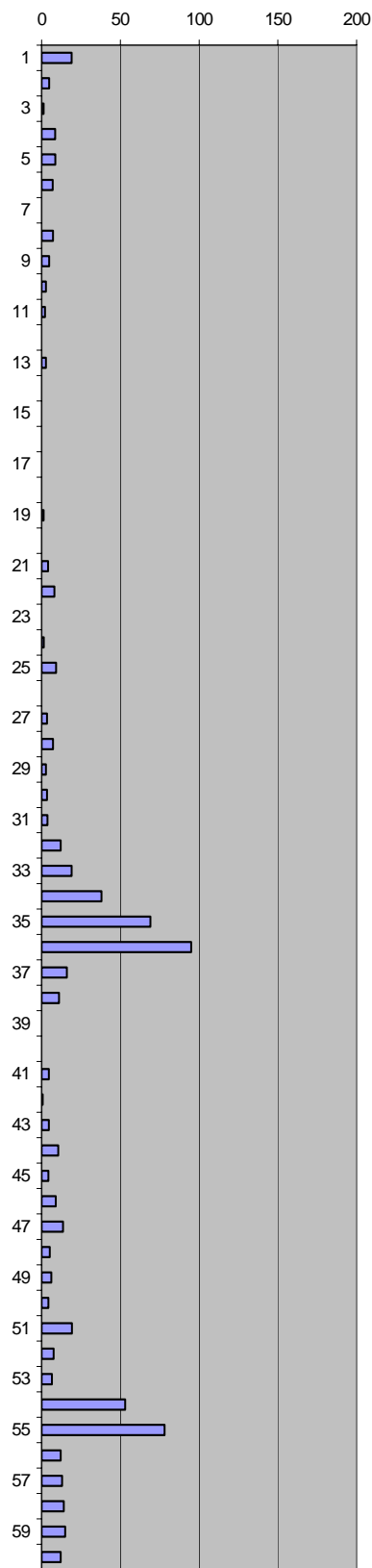


Company: DONG Energy Well: Gwen-2, core 2
 Subject: Miniperm. Data 14005'50" - 14008'50"

Top box 16 4268.875 m

Flowm 1: small	Flowm 2: medium	Flowm 3: large
Upstream P: 2.8 bar	2.8 bar	2.8 bar

Depth, m	Flowm 1	Flowm 2	Flowm 3	Mean flow	Comments
4268.890	102			19	
4268.905	37			5	
4268.920	21			1	
4268.935	54			8	plug
4268.950	55			9	plug
4268.965	47			7	plug
4268.980	17			0	
4268.995	48			7	
4269.010	37			5	plug
4269.025	28			3	plug 107
4269.040	25			2	
4269.055	12			0	
4269.070	28			3	
4269.085	16			0	
4269.100	6			0	
4269.115	15			0	
4269.130	17			0	
4269.145	14			0	
4269.160	21			1	
4269.175	10			0	
4269.190	34			4	
4269.205	52			8	
4269.220	6			0	
4269.235	22			1	
4269.250	57			9	
4269.265	8			0	
4269.280	31			3	
4269.295	48			7	
4269.310	28			3	
4269.325	31			3	plug 108
4269.340	32			4	
4269.355	70			12	plug
4269.370	102			19	nxt plug
4269.385		38		38	
4269.400		69		69	
4269.415		95		95	
4269.430		16		16	
4269.445		11		11	
4269.460	0			0	
4269.475	2			0	
4269.490	36			5	
4269.505	18			1	
4269.520	36			5	
4269.535	63			10	
4269.550	35			4	
4269.565	56			9	
4269.580	77			14	plug
4269.595	39			5	
4269.610	43			6	
4269.625	35			4	plug 109
4269.640	103			19	plug
4269.655	50			8	plug
4269.670	45			7	
4269.685		53		53	
4269.700		78		78	
4269.715		12		12	
4269.730		13		13	
4269.745		14		14	
4269.760		15		15	
4269.775		12		12	btm

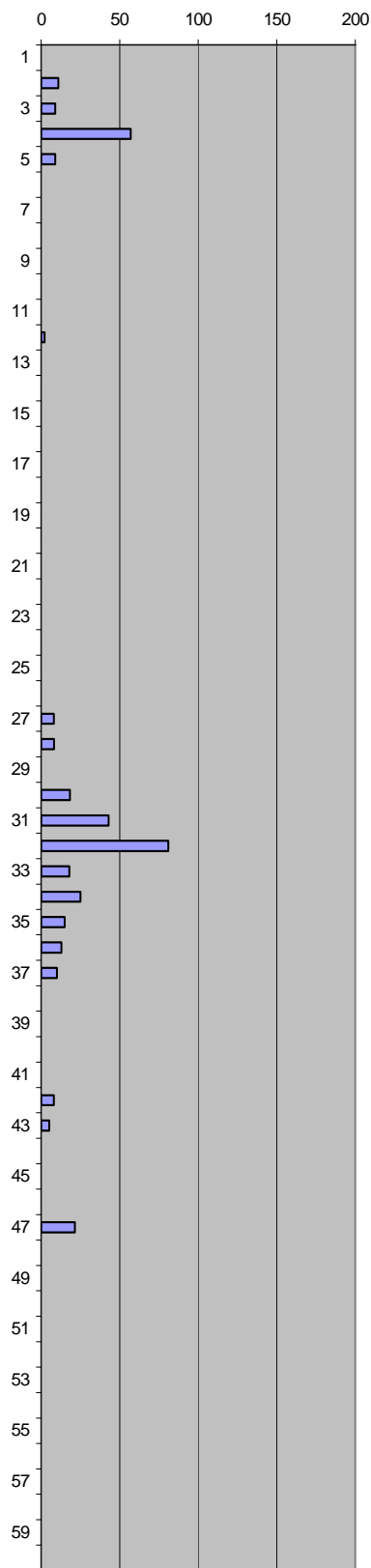


Company: DONG Energy Well: Gwen-2, core 2
 Subject: Miniperme. Data 14008'50" - 14011'50"

Top box 17 4269.79 m

Flowm 1: small	Flowm 2: medium	Flowm 3: large
Upstream P: 2.8 bar	2.8 bar	2.8 bar

Depth, m	Flowm 1	Flowm 2	Flowm 3	Mean flow	Comments
4269.805					nd
4269.820		11		11	
4269.835		9		9	
4269.850		57		57	
4269.865		9		9	
4269.880	0			0	
4269.895	1			0	
4269.910	8			0	
4269.925	0			0	
4269.940	0			0	plug 110
4269.955	0			0	
4269.970	25			2	
4269.985	0			0	
4270.000	2			0	
4270.015	16			0	
4270.030	1			0	
4270.045	8			0	
4270.060	0			0	
4270.075	0			0	
4270.090	0			0	
4270.105	3			0	
4270.120	15			0	
4270.135	3			0	
4270.150	1			0	plug
4270.165	8			0	plug
4270.180	8			0	
4270.195	52			8	plug
4270.210	53			8	plug
4270.225	14			0	
4270.240	95			18	plug 111
4270.255		43		43	plug
4270.270		81		81	nxt plug
4270.285		18		18	
4270.300		25		25	
4270.315		15		15	plug 12V
4270.330		13		13	
4270.345		10		10	
4270.360	1			0	
4270.375	3			0	
4270.390	1			0	
4270.405	5			0	
4270.420	52			8	
4270.435	40			5	
4270.450	1			0	
4270.465	1			0	plug
4270.480	5			0	plug
4270.495	108			21	nxt plug
4270.510	0			0	
4270.525	1			0	
4270.540				0	plug 112, nd
4270.555	7			0	
4270.570	0			0	
4270.585	0			0	
4270.600	10			0	
4270.615	2			0	
4270.630	3			0	
4270.645	16			0	
4270.660	3			0	
4270.675	3			0	
4270.690	1			0	btm

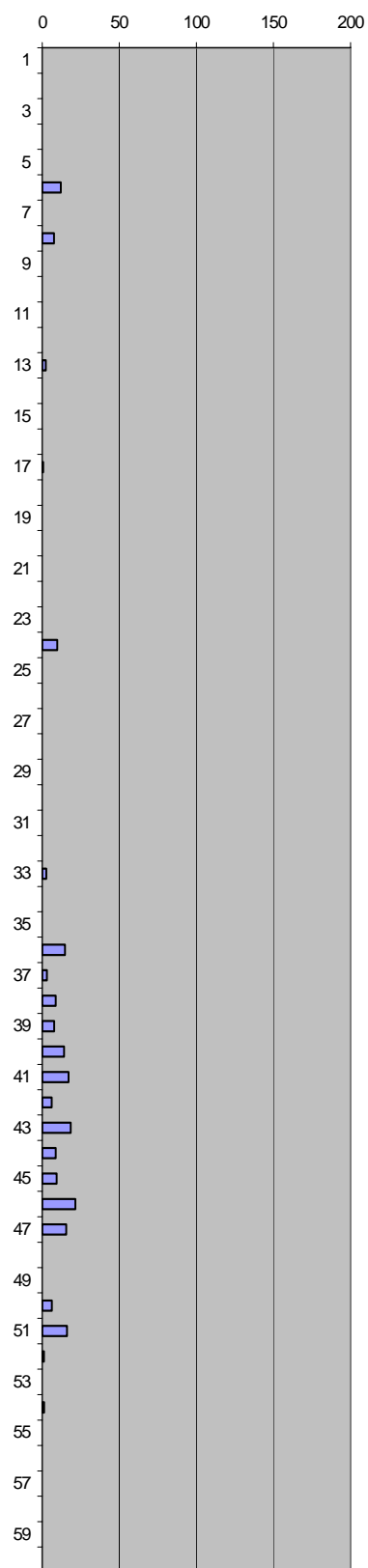


Company: DONG Energy Well: Gwen-2, core 2
 Subject: Miniperm. Data 14011'50" - 14014'50"

Top box 18 4270.705 m

Flowm 1: small	Flowm 2: medium	Flowm 3: large
Upstream P : 2.8 bar	2.8 bar	2.8 bar

Depth, m	Flowm 1	Flowm 2	Flowm 3	Mean flow	Comments
4270.720	4			0	
4270.735	12			0	
4270.750	6			0	
4270.765	7			0	
4270.780	5			0	
4270.795	70			12	
4270.810	12			0	
4270.825	50			8	nxt plug
4270.840	4			0	plug
4270.855	4			0	plug 113
4270.870	2			0	
4270.885	2			0	
4270.900	26			2	
4270.915	6			0	
4270.930	3			0	
4270.945	0			0	
4270.960	18			1	
4270.975	5			0	
4270.990	3			0	
4271.005	1			0	
4271.020	15			0	
4271.035	0			0	
4271.050	2			0	
4271.065	60			10	
4271.080	5			0	
4271.095	2			0	
4271.110	5			0	
4271.125	7			0	plug
4271.140	3			0	plug
4271.155	11			0	plug 114, edge
4271.170	11			0	nxt plug
4271.185	6			0	
4271.200	27			3	
4271.215	8			0	
4271.230	8			0	
4271.245	83			15	
4271.260	29			3	
4271.275	55			9	
4271.290	51			8	
4271.305	80			14	
4271.320	93			17	
4271.335	43			6	
4271.350	99			18	
4271.365	55			9	
4271.380	58			9	
4271.395	113			21	
4271.410	86			16	
4271.425	12			0	
4271.440	7			0	nxt plug
4271.455	44			6	plug 115
4271.470	88			16	plug
4271.485	20			1	nxt plug
4271.500	10			0	
4271.515	21			1	edge
4271.530					Rubble
4271.545					-
4271.560					-
4271.575					-
4271.590					-
4271.605					btm



Company: DONG Energy Well: Gwen-2, core 2
 Subject: Miniperm. Data 14017'50" - 14020'50"

Top box 20 4272.535 m

Flowm 1: small	Flowm 2: medium	Flowm 3: large
Upstream P : 2.8 bar	2.8 bar	2.8 bar

Depth, m	Flowm 1	Flowm 2	Flowm 3	Mean flow	Comments
4272.550	17			0	
4272.565	20			1	
4272.580	22			1	edge
4272.595	27			3	
4272.610	15			0	
4272.625	25			2	
4272.640	22			1	
4272.655	40			5	nxt plug
4272.670	48			7	plug
4272.685	53			8	plug 119
4272.700	39			5	nxt plug
4272.715	35			4	plug
4272.730	34			4	plug
4272.745	18			1	plug
4272.760	33			4	plug
4272.775	22			1	
4272.790	33			4	
4272.805	17			0	
4272.820	9			0	
4272.835	5			0	
4272.850	7			0	
4272.865	25			2	
4272.880	11			0	
4272.895	16			0	
4272.910	8			0	
4272.925	11			0	
4272.940	16			0	
4272.955	22			1	nxt plug
4272.970	10			0	plug
4272.985	1			0	plug 120
4273.000	42			6	plug
4273.015	9			0	
4273.030	5			0	
4273.045	1			0	
4273.060	3			0	
4273.075	1			0	
4273.090	1			0	
4273.105	1			0	
4273.120	7			0	
4273.135	5			0	
4273.150	3			0	
4273.165	3			0	
4273.180	1			0	
4273.195	10			0	
4273.210	3			0	
4273.225	0			0	
4273.240	2			0	
4273.255	13			0	
4273.270	1			0	plug
4273.285	1			0	plug 121
4273.300	15			0	nxt plug 1,5"
4273.315	18			1	plug
4273.330	12			0	plug
4273.345	7			0	plug
4273.360	0			0	
4273.375	1			0	
4273.390	2			0	
4273.405	1			0	btm

