

## **Special core analysis for DONG A/S**

**Well: 5605/10-1A, Nini-1A**

**Well: 5605/10-3, Nini-3**

Mini-permeametry measured on  
selected core sections

Niels Springer



**Special core analysis for DONG A/S**  
**Well: 5605/10-1A, Nini-1A**  
**Well: 5605/10-3, Nini-3**

Mini-permeametry measured on  
selected core sections

Niels Springer  
Core Laboratory

Released 29.07.2006

# Contents

---

<b>1. Introduction</b>	<b>2</b>
<b>2. Analytical procedure</b>	<b>3</b>
2.1 <i>Measurement</i>	3
2.2 <i>Calculation</i>	3
2.3 <i>Instrumental</i>	3
<b>3. Results</b>	<b>4</b>
3.1 <i>Mini permeability measurements</i>	4
3.2 <i>Nini-1A data</i>	5
3.3 <i>Nini-3 data</i>	16

**Enclosure:** - Core log  
              - Data on diskette

Req. no.: 09201-515  
File: Nini-minipermrep.doc  
      Nini-1A miniperm.xls  
      Nini-3 miniperm.xls

# 1. Introduction

---

By request of DONG E&P A/S, GEUS Core Laboratory has performed special core analysis on the wells 5605/10-1A and 5605/10-3 (Nini-1A and Nini-3), Danish North Sea.

The experimental programme was specified in e-mail communications with Mr. Christian Høier. The following analytical programme has been carried out:

- Mini permeametry on 10 and 18 meter resinated cuts from each well respectively

The study was carried out under DONG E&P contract no. R061/04.

## 2. Analytical procedure

---

### 2.1 Measurement

From the Nini wells 28 resinated cuts were received in the laboratory covering the following intervals:

- Nini-1A: 1908 – 1918 meter
- Nini-3: 1696 – 1714 meter

Most core slabs consist of loosely consolidated sand but appears surprisingly cohesive due to a very high 'dead oil' saturation. Core sections having no oil stain have been identified with a different colour code in the 'Comments' column in the attached datasheets.

Mini permeametry readings were taken along the resinated core slabs at a step interval of 1.5 cm. Observations relating to the condition of the slab and the possible effect on the measurements were recorded during the work. This information is contained with the data sheets in section 3 of this report.

### 2.2 Calculation

Gas permeability measurement was carried out using the large flowmeter tube only at an upstream pressure of 0.13 bar. Thus no conversion calculation between flowmeter tubes have been necessary in this study.

### 2.3 Instrumental

GEUS field mini permeameter M 1990 was used as a stationary lab instrument to measure the gas spot permeability. The instrument was connected directly to a regulated air supply in the laboratory and spot measurements taken with a 6 mm diameter flow probe. The upstream pressure was regulated to a suitable setting on the pressure transducer (Druck®), and flow readings were recorded from 3 ball flowmeter tubes covering 3 orders of magnitude in gas flow (Ruska®). A leakage test is performed at regular intervals by placing the probe tip on an impermeable plate. The field mini permeameter has been described earlier in a GEUS internal report<sup>1</sup>.

1. Madsen, Lena: Minipermeametry: Testing the DGU-minipermeameter. A contribution to the EFP-92 Project: Stochastic Modelling of Petrophysical properties in Chalk. DGU Service report no. 39, 1994.

## 3. Results

---

### 3.1 Mini permeability measurements

Readings vs depth are given in the following charts. A bar graph along the chart provides a quick visual impression of the scatter within the core box. Descriptive comments have been added as a guide to interpretation. The following abbreviations have been used:

'nxt plug nn'	- reading taken next to plug no. nn
'frc'	- reading taken close to or possibly affected by a fracture
'epoxy'	- reading may be affected by the resin
'edge'	- reading taken close at the slab edge
'surface'	- reading may be affected by surface irregularities
'nd'	- reading not possible due to large fracture or missing core
'oil-stain'	- the full colour coded interval is having a high dead oil saturation
'v-soft'	- soft section of core with clear imprint of the measurement tip that may have affected the reading.

The attached core log shows the mini permeability readings normalized to plug permeability data, and plug data have been added to make direct comparison possible.

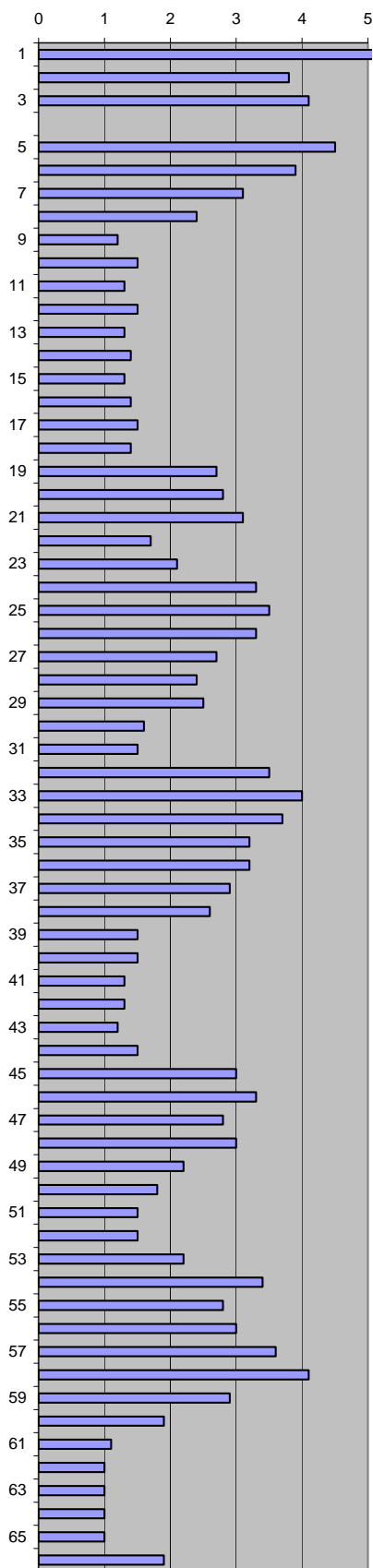
## 3.2 Nini-1A data

Company: DONG Well: 5605/10-1A # 1  
 Subject: Miniperm. Data  
 1908-1909 m

Nini-1A

Flowmeter: Large  
 Upstream P: 0,13 bar

Depth, m	Flow	Comments
1908.015	5.8	'oil-stain'
1908.030	3.8	'nxt plug 1'
1908.045	4.1	'nxt plug 1'
1908.060		'nd'
1908.075	4.5	'nxt plug 1 + 1V'
1908.090	3.9	'nxt plug 1V'
1908.105	3.1	'nxt plug 1V'
1908.120	2.4	'nxt plug 1V'
1908.135	1.2	
1908.150	1.5	
1908.165	1.3	
1908.180	1.5	
1908.195	1.3	
1908.210	1.4	
1908.225	1.3	
1908.240	1.4	
1908.255	1.5	
1908.270	1.4	
1908.285	2.7	'frc'
1908.300	2.8	'frc'
1908.315	3.1	'frc'
1908.330	1.7	
1908.345	2.1	
1908.360	3.3	'nxt plug 2'
1908.375	3.5	'nxt plug 2'
1908.390	3.3	'nxt plug 2'
1908.405	2.7	
1908.420	2.4	
1908.435	2.5	
1908.450	1.6	
1908.465	1.5	
1908.480	3.5	'frc'
1908.495	4.0	'nxt plug'
1908.510	3.7	'nxt plug'
1908.525	3.2	'nxt plug'
1908.540	3.2	
1908.555	2.9	
1908.570	2.6	
1908.585	1.5	
1908.600	1.5	
1908.615	1.3	
1908.630	1.3	
1908.645	1.2	
1908.660	1.5	
1908.675	3.0	'nxt plug 3' 'frc'
1908.690	3.3	'nxt plug 3' 'frc'
1908.705	2.8	'nxt plug 3'
1908.720	3.0	'nxt plug 3'
1908.735	2.2	
1908.750	1.8	
1908.765	1.5	
1908.780	1.5	
1908.795	2.2	
1908.810	3.4	'frc'
1908.825	2.8	
1908.840	3.0	
1908.855	3.6	
1908.870	4.1	
1908.885	2.9	
1908.900	1.9	
1908.915	1.1	
1908.930	1.0	
1908.945	1.0	
1908.960	1.0	
1908.975	1.0	
1908.990	1.9	'edge'



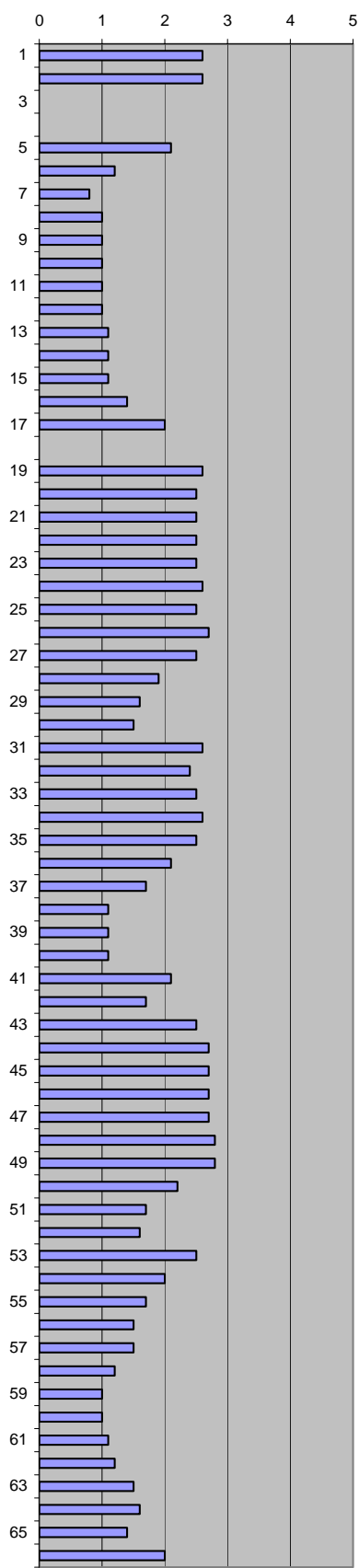


Company: DONG Well: 5605/10-1A # 1  
 Subject: Miniperm. Data  
 1909-1910 m

Nini-1A

Flowmeter: Large  
 Upstream P: 0,13 bar

Depth, m	Flow	Comments
1909.015	2.6	'nxt plug 4V'
1909.030	2.6	'nxt plug 4 + 4V'
1909.045		'nd'
1909.060		'nd'
1909.075	2.1	'nxt plug 4v'
1909.090	1.2	
1909.105	0.8	'oil-stain'
1909.120	1.0	
1909.135	1.0	
1909.150	1.0	
1909.165	1.0	
1909.180	1.0	
1909.195	1.1	
1909.210	1.1	
1909.225	1.1	
1909.240	1.4	
1909.255	2.0	'frc'
1909.270		'nd'
1909.285	2.6	
1909.300	2.5	
1909.315	2.5	
1909.330	2.5	
1909.345	2.5	
1909.360	2.6	'nxt plug 5'
1909.375	2.5	'nxt plug 5'
1909.390	2.7	'nxt plug 5'
1909.405	2.5	'nxt plug 5'
1909.420	1.9	
1909.435	1.6	
1909.450	1.5	
1909.465	2.6	'nxt plug'
1909.480	2.4	'nxt plug'
1909.495	2.5	'nxt plug'
1909.510	2.6	'nxt plug'
1909.525	2.5	
1909.540	2.1	
1909.555	1.7	
1909.570	1.1	
1909.585	1.1	
1909.600	1.1	
1909.615	2.1	
1909.630	1.7	
1909.645	2.5	
1909.660	2.7	
1909.675	2.7	
1909.690	2.7	'nxt plug 6'
1909.705	2.7	'nxt plug 6'
1909.720	2.8	'nxt plug 6'
1909.735	2.8	
1909.750	2.2	
1909.765	1.7	
1909.780	1.6	
1909.795	2.5	
1909.810	2.0	
1909.825	1.7	
1909.840	1.5	
1909.855	1.5	
1909.870	1.2	
1909.885	1.0	
1909.900	1.0	
1909.915	1.1	
1909.930	1.2	
1909.945	1.5	
1909.960	1.6	
1909.975	1.4	
1909.990	2.0	'edge'

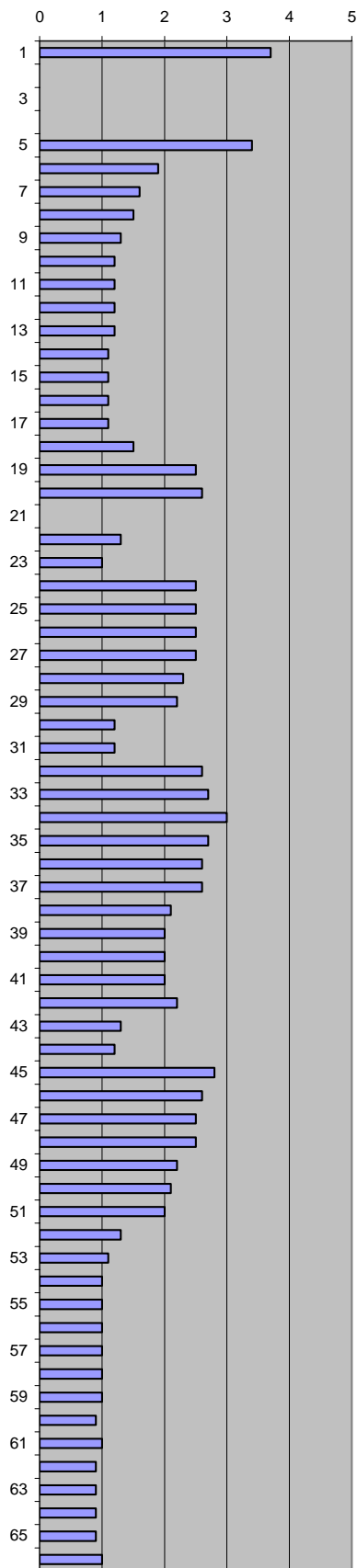


Company: DONG Well: 5605/10-1A # 1  
 Subject: Miniperm. Data  
 1910-1911 m

Nini-1A

Flowmeter: Large  
 Upstream P: 0,13 bar

Depth, m	Flow	Comments
1910.015	3.7	'nxt plug 7 + 7V'
1910.030		'nd'
1910.045		'nd'
1910.060		'nd'
1910.075	3.4	'nxt plug 7 + 7V'
1910.090	1.9	'nxt plug 7 + 7V'
1910.105	1.6	
1910.120	1.5	
1910.135	1.3	'oil-stain'
1910.150	1.2	
1910.165	1.2	
1910.180	1.2	
1910.195	1.2	
1910.210	1.1	
1910.225	1.1	
1910.240	1.1	
1910.255	1.1	
1910.270	1.5	'frc'
1910.285	2.5	'frc'
1910.300	2.6	
1910.315		'nd'
1910.330	1.3	
1910.345	1.0	
1910.360	2.5	'nxt plug 8'
1910.375	2.5	'nxt plug 8'
1910.390	2.5	'nxt plug 8'
1910.405	2.5	'nxt plug 8'
1910.420	2.3	
1910.435	2.2	
1910.450	1.2	
1910.465	1.2	
1910.480	2.6	'nxt plug'
1910.495	2.7	'nxt plug'
1910.510	3.0	'nxt plug'
1910.525	2.7	
1910.540	2.6	
1910.555	2.6	
1910.570	2.1	
1910.585	2.0	
1910.600	2.0	
1910.615	2.0	
1910.630	2.2	
1910.645	1.3	
1910.660	1.2	
1910.675	2.8	'nxt plug 9'
1910.690	2.6	'nxt plug 9'
1910.705	2.5	'nxt plug 9'
1910.720	2.5	'nxt plug 9'
1910.735	2.2	
1910.750	2.1	
1910.765	2.0	
1910.780	1.3	
1910.795	1.1	
1910.810	1.0	
1910.825	1.0	
1910.840	1.0	
1910.855	1.0	
1910.870	1.0	
1910.885	1.0	
1910.900	0.9	
1910.915	1.0	
1910.930	0.9	
1910.945	0.9	
1910.960	0.9	
1910.975	0.9	
1910.990	1.0	

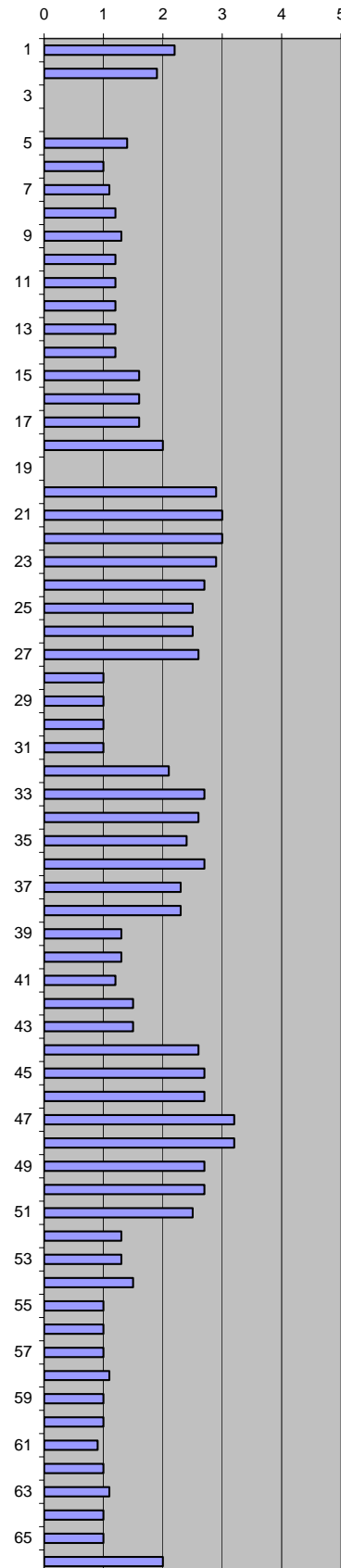


Company: DONG Well: 5605/10-1A # 1  
 Subject: Miniperm. Data  
 1911-1912 m

Nini-1A

Flowmeter: Large  
 Upstream P: 0,13 bar

Depth, m	Flow	Comments
1911.015	2.2	'nxt plug 10 + 10V'
1911.030	1.9	'nxt plug 10 + 10V'
1911.045		'nd'
1911.060		'nd'
1911.075	1.4	'nxt plug 10 + 10V'
1911.090	1.0	'nxt plug 10V'
1911.105	1.1	
1911.120	1.2	
1911.135	1.3	'oil-stain'
1911.150	1.2	
1911.165	1.2	
1911.180	1.2	
1911.195	1.2	
1911.210	1.2	
1911.225	1.6	
1911.240	1.6	
1911.255	1.6	
1911.270	2.0	
1911.285		'nd'
1911.300	2.9	'frc'
1911.315	3.0	'frc'
1911.330	3.0	
1911.345	2.9	
1911.360	2.7	'nxt plug 11'
1911.375	2.5	'nxt plug 11'
1911.390	2.5	'nxt plug 11'
1911.405	2.6	'nxt plug 11'
1911.420	1.0	
1911.435	1.0	
1911.450	1.0	
1911.465	1.0	
1911.480	2.1	'frc'
1911.495	2.7	'nxt plug'
1911.510	2.6	'nxt plug'
1911.525	2.4	'nxt plug'
1911.540	2.7	
1911.555	2.3	
1911.570	2.3	
1911.585	1.3	
1911.600	1.3	
1911.615	1.2	
1911.630	1.5	
1911.645	1.5	
1911.660	2.6	
1911.675	2.7	
1911.690	2.7	'nxt plug 12'
1911.705	3.2	'nxt plug 12'
1911.720	3.2	'nxt plug 12'
1911.735	2.7	
1911.750	2.7	
1911.765	2.5	
1911.780	1.3	
1911.795	1.3	
1911.810	1.5	
1911.825	1.0	
1911.840	1.0	
1911.855	1.0	
1911.870	1.1	
1911.885	1.0	
1911.900	1.0	
1911.915	0.9	
1911.930	1.0	
1911.945	1.1	
1911.960	1.0	
1911.975	1.0	
1911.990	2.0	'edge'

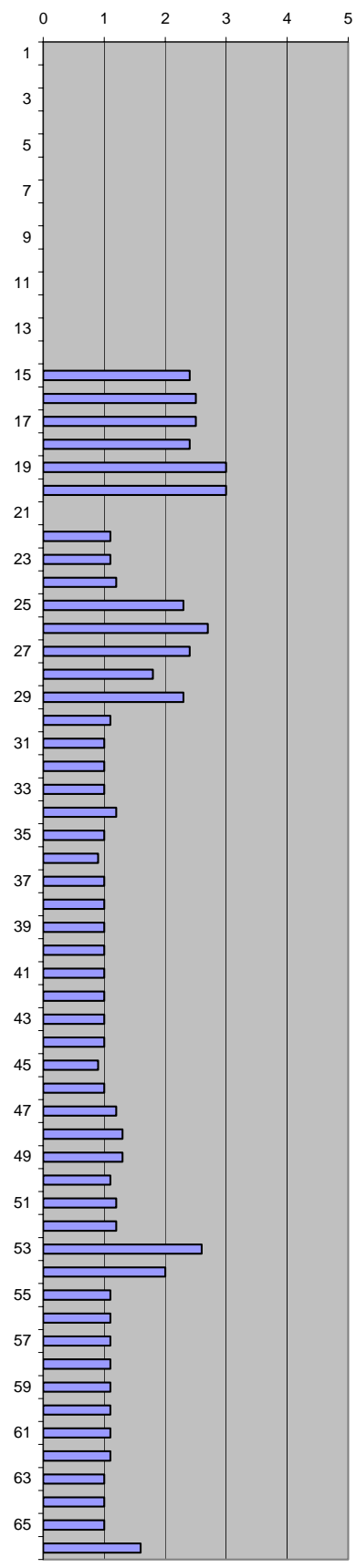


Company: DONG Well: 5605/10-1A # 1  
 Subject: Miniperm. Data 1912-1913 m

Nini-1A

Flowmeter: Large  
 Upstream P: 0,13 bar

Depth, m	Flow	Comments
1912.015		Flowmeter:
1912.030		small
1912.045		
1912.060		
1912.075		'cem sst'
1912.090		
1912.105		
1912.120		
1912.135		
1912.150		
1912.165		
1912.180		
1912.195		
1912.210		
1912.225	2.4	'frc'
1912.240	2.5	
1912.255	2.5	
1912.270	2.4	'frc'
1912.285	3.0	'frc'
1912.300	3.0	'frc'
1912.315		'nd'
1912.330	1.1	
1912.345	1.1	
1912.360	1.2	'nxt plug 14'
1912.375	2.3	'nxt plug 14'
1912.390	2.7	'nxt plug 14'
1912.405	2.4	'nxt plug 14'
1912.420	1.8	
1912.435	2.3	'oil-stain'
1912.450	1.1	
1912.465	1.0	
1912.480	1.0	'nxt plug'
1912.495	1.0	'nxt plug'
1912.510	1.2	'nxt plug' 'frc'
1912.525	1.0	
1912.540	0.9	
1912.555	1.0	
1912.570	1.0	
1912.585	1.0	
1912.600	1.0	
1912.615	1.0	
1912.630	1.0	
1912.645	1.0	
1912.660	1.0	
1912.675	0.9	
1912.690	1.0	
1912.705	1.2	'nxt plug 15'
1912.720	1.3	'nxt plug 15'
1912.735	1.3	'nxt plug 15'
1912.750	1.1	'nxt plug 15'
1912.765	1.2	
1912.780	1.2	
1912.795	2.6	'frc'
1912.810	2.0	
1912.825	1.1	
1912.840	1.1	
1912.855	1.1	
1912.870	1.1	
1912.885	1.1	
1912.900	1.1	
1912.915	1.1	
1912.930	1.1	
1912.945	1.0	
1912.960	1.0	
1912.975	1.0	
1912.990	1.6	'edge'

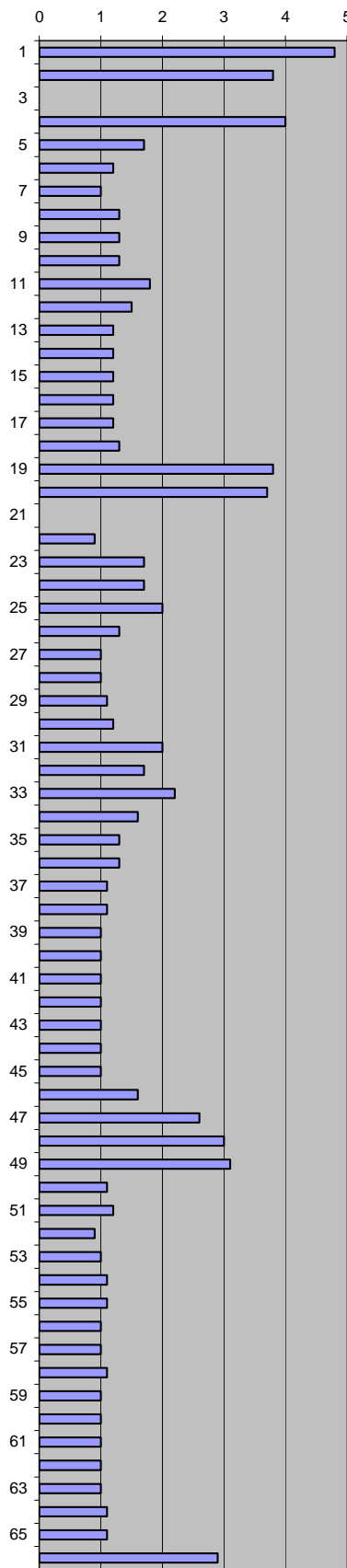


Company: DONG Well: 5605/10-1A # 1  
 Subject: Miniperm. Data  
 1913-1914 m

Nini-1A

Flowmeter: Large  
 Upstream P: 0,13 bar

Depth, m	Flow	Comments
1913.015	4.8	'nxt plug 16' 'frc'
1913.030	3.8	
1913.045		'nd'
1913.060	4.0	'nxt plug 16' 'frc'
1913.075	1.7	'nxt plug 16 + 16V'
1913.090	1.2	'nxt plug 16V'
1913.105	1.0	
1913.120	1.3	
1913.135	1.3	'oil-stain'
1913.150	1.3	
1913.165	1.8	
1913.180	1.5	
1913.195	1.2	
1913.210	1.2	
1913.225	1.2	
1913.240	1.2	
1913.255	1.2	
1913.270	1.3	
1913.285	3.8	'frc'
1913.300	3.7	
1913.315		'nd'
1913.330	0.9	
1913.345	1.7	'nxt plug 17'
1913.360	1.7	'nxt plug 17'
1913.375	2.0	'nxt plug 17'
1913.390	1.3	
1913.405	1.0	
1913.420	1.0	
1913.435	1.1	
1913.450	1.2	
1913.465	2.0	'frc'
1913.480	1.7	'nxt plug'
1913.495	2.2	'nxt plug'
1913.510	1.6	'nxt plug'
1913.525	1.3	
1913.540	1.3	
1913.555	1.1	
1913.570	1.1	
1913.585	1.0	
1913.600	1.0	
1913.615	1.0	
1913.630	1.0	
1913.645	1.0	
1913.660	1.0	
1913.675	1.0	
1913.690	1.6	'nxt plug 18'
1913.705	2.6	'nxt plug 18'
1913.720	3.0	'nxt plug 18' 'frc'
1913.735	3.1	
1913.750	1.1	
1913.765	1.2	
1913.780	0.9	
1913.795	1.0	
1913.810	1.1	
1913.825	1.1	
1913.840	1.0	
1913.855	1.0	
1913.870	1.1	
1913.885	1.0	
1913.900	1.0	
1913.915	1.0	
1913.930	1.0	
1913.945	1.0	
1913.960	1.1	
1913.975	1.1	
1913.990	2.9	'edge'

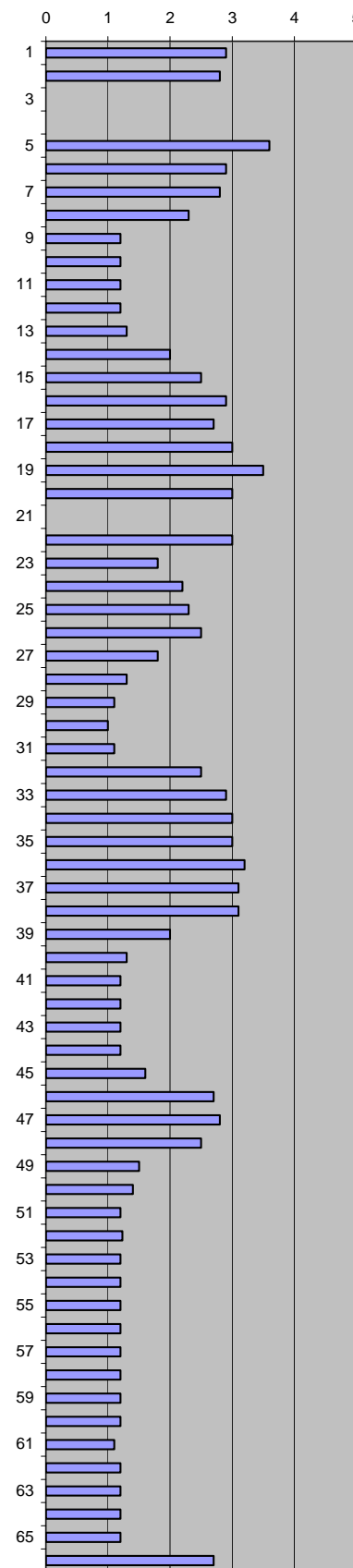


Company: DONG Well: 5605/10-1A # 1  
 Subject: Miniperm. Data  
 1914-1915 m

Nini-1A

Flowmeter: Large  
 Upstream P: 0,13 bar

Depth, m	Flow	Comments
1914.015	2.9	'nxt plug 19 + 19V'
1914.030	2.8	'nxt plug 19 + 19V'
1914.045		'nd'
1914.060		'nd'
1914.075	3.6	'nxt plug 19V'
1914.090	2.9	'nxt plug 19V'
1914.105	2.8	
1914.120	2.3	
1914.135	1.2	'oil-stain'
1914.150	1.2	
1914.165	1.2	
1914.180	1.2	
1914.195	1.3	
1914.210	2.0	
1914.225	2.5	
1914.240	2.9	
1914.255	2.7	
1914.270	3.0	
1914.285	3.5	'frc'
1914.300	3.0	
1914.315		'nd'
1914.330	3.0	'frc'
1914.345	1.8	
1914.360	2.2	'nxt plug 20'
1914.375	2.3	'nxt plug 20'
1914.390	2.5	'nxt plug 20'
1914.405	1.8	'nxt plug 20'
1914.420	1.3	
1914.435	1.1	
1914.450	1.0	
1914.465	1.1	
1914.480	2.5	
1914.495	2.9	
1914.510	3.0	
1914.525	3.0	
1914.540	3.2	
1914.555	3.1	
1914.570	3.1	
1914.585	2.0	
1914.600	1.3	
1914.615	1.2	
1914.630	1.2	
1914.645	1.2	
1914.660	1.2	
1914.675	1.6	
1914.690	2.7	'nxt plug 21'
1914.705	2.8	'nxt plug 21'
1914.720	2.5	'nxt plug 21'
1914.735	1.5	
1914.750	1.4	
1914.765	1.2	
1914.780	1.2	
1914.795	1.2	
1914.810	1.2	
1914.825	1.2	
1914.840	1.2	
1914.855	1.2	
1914.870	1.2	
1914.885	1.2	
1914.900	1.2	
1914.915	1.1	
1914.930	1.2	
1914.945	1.2	
1914.960	1.2	
1914.975	1.2	
1914.990	2.7	'edge'

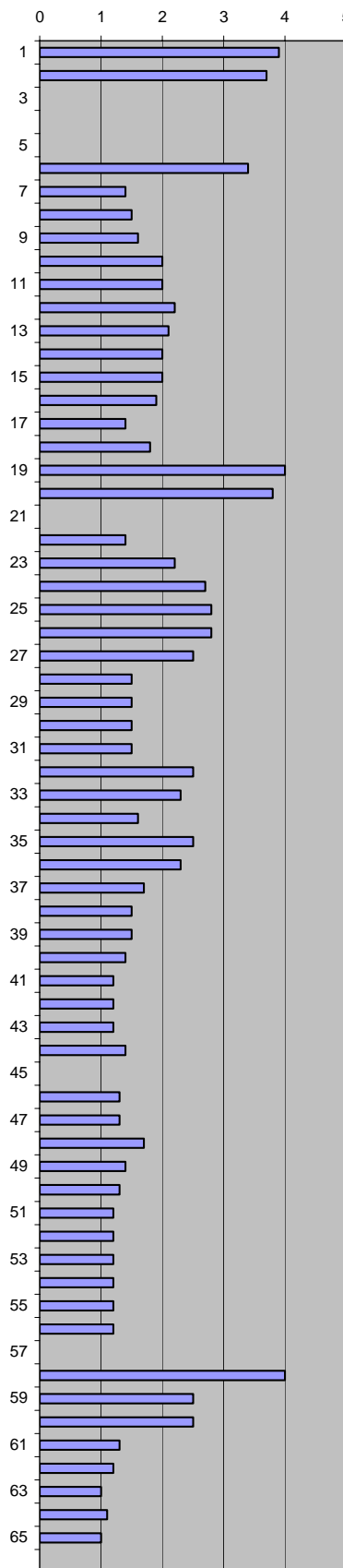


Company: DONG Well: 5605/10-1A # 1  
 Subject: Miniperm. Data  
 1915-1916 m

Nini-1A

Flowmeter: Large  
 Upstream P: 0,13 bar

Depth, m	Flow	Comments
1915.015	3.9	'oil-stain'
1915.030	3.7	
1915.045		'nd'
1915.060		'nd'
1915.075		'nd'
1915.090	3.4	'nxt plug 22'
1915.105	1.4	nxt plug 22V'
1915.120	1.5	
1915.135	1.6	
1915.150	2.0	
1915.165	2.0	
1915.180	2.2	
1915.195	2.1	
1915.210	2.0	
1915.225	2.0	
1915.240	1.9	
1915.255	1.4	
1915.270	1.8	
1915.285	4.0	'frc'
1915.300	3.8	
1915.315		'nd'
1915.330	1.4	'frc'
1915.345	2.2	'frc'
1915.360	2.7	'nxt plug 23'
1915.375	2.8	'nxt plug 23'
1915.390	2.8	'nxt plug 23'
1915.405	2.5	'nxt plug 23'
1915.420	1.5	
1915.435	1.5	
1915.450	1.5	
1915.465	1.5	
1915.480	2.5	'nxt plug'
1915.495	2.3	'nxt plug'
1915.510	1.6	'nxt plug' 'frc'
1915.525	2.5	'nxt plug'
1915.540	2.3	
1915.555	1.7	
1915.570	1.5	
1915.585	1.5	
1915.600	1.4	
1915.615	1.2	
1915.630	1.2	
1915.645	1.2	
1915.660	1.4	'frc'
1915.675		'nd'
1915.690	1.3	
1915.705	1.3	'nxt plug 24'
1915.720	1.7	'nxt plug 24'
1915.735	1.4	'nxt plug 24'
1915.750	1.3	'nxt plug 24'
1915.765	1.2	
1915.780	1.2	
1915.795	1.2	
1915.810	1.2	
1915.825	1.2	
1915.840	1.2	
1915.855		'nd'
1915.870	4.0	'frc'
1915.885	2.5	
1915.900	2.5	
1915.915	1.3	
1915.930	1.2	
1915.945	1.0	
1915.960	1.1	
1915.975	1.0	
1915.990		'nd'

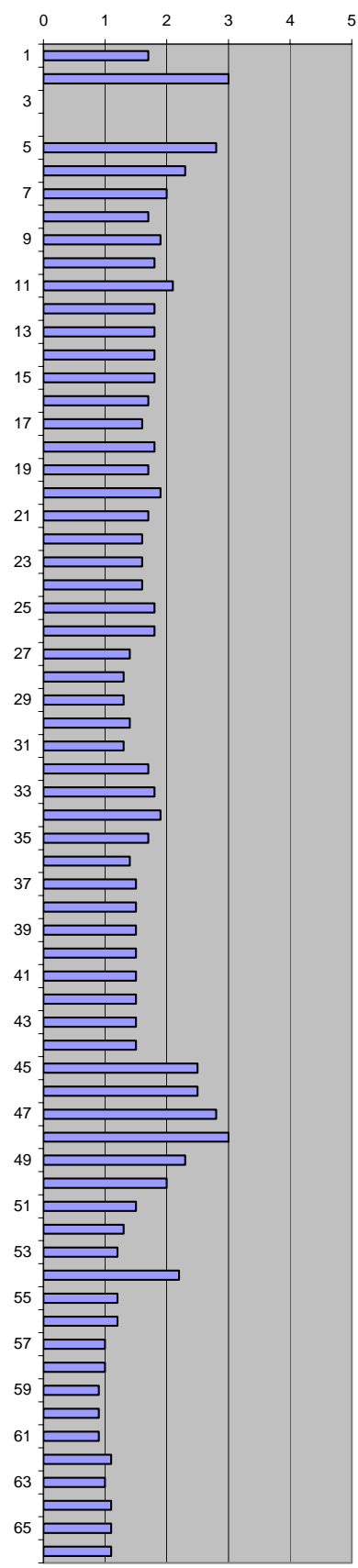


Company: DONG Well: 5605/10-1A # 1  
 Subject: Miniperm. Data  
 1916-1917 m

Nini-1A

Flowmeter: Large  
 Upstream P: 0,13 bar

Depth, m	Flow	Comments
1916.015	1.7	
1916.030	3.0	'nxt plug 25' 'frc'
1916.045		'nxt plug 25V' 'nd'
1916.060		'nxt plug 25V' 'nd'
1916.075	2.8	'nxt plug 25' 'frc'
1916.090	2.3	'nxt plug 25 + 25V'
1916.105	2.0	'nxt plug 25V'
1916.120	1.7	
1916.135	1.9	
1916.150	1.8	'oil-stain'
1916.165	2.1	
1916.180	1.8	
1916.195	1.8	
1916.210	1.8	
1916.225	1.8	
1916.240	1.7	
1916.255	1.6	
1916.270	1.8	
1916.285	1.7	
1916.300	1.9	
1916.315	1.7	
1916.330	1.6	
1916.345	1.6	'nxt plug 26'
1916.360	1.6	'nxt plug 26'
1916.375	1.8	'nxt plug 26'
1916.390	1.8	'nxt plug 26'
1916.405	1.4	
1916.420	1.3	
1916.435	1.3	
1916.450	1.4	
1916.465	1.3	
1916.480	1.7	'nxt plug'
1916.495	1.8	'nxt plug'
1916.510	1.9	'nxt plug'
1916.525	1.7	'nxt plug'
1916.540	1.4	
1916.555	1.5	
1916.570	1.5	
1916.585	1.5	
1916.600	1.5	
1916.615	1.5	
1916.630	1.5	
1916.645	1.5	
1916.660	1.5	
1916.675	2.5	
1916.690	2.5	'nxt plug 27'
1916.705	2.8	'nxt plug 27'
1916.720	3.0	'nxt plug 27'
1916.735	2.3	
1916.750	2.0	
1916.765	1.5	
1916.780	1.3	
1916.795	1.2	
1916.810	2.2	'frc'
1916.825	1.2	
1916.840	1.2	
1916.855	1.0	
1916.870	1.0	
1916.885	0.9	
1916.900	0.9	
1916.915	0.9	
1916.930	1.1	
1916.945	1.0	
1916.960	1.1	
1916.975	1.1	
1916.990	1.1	



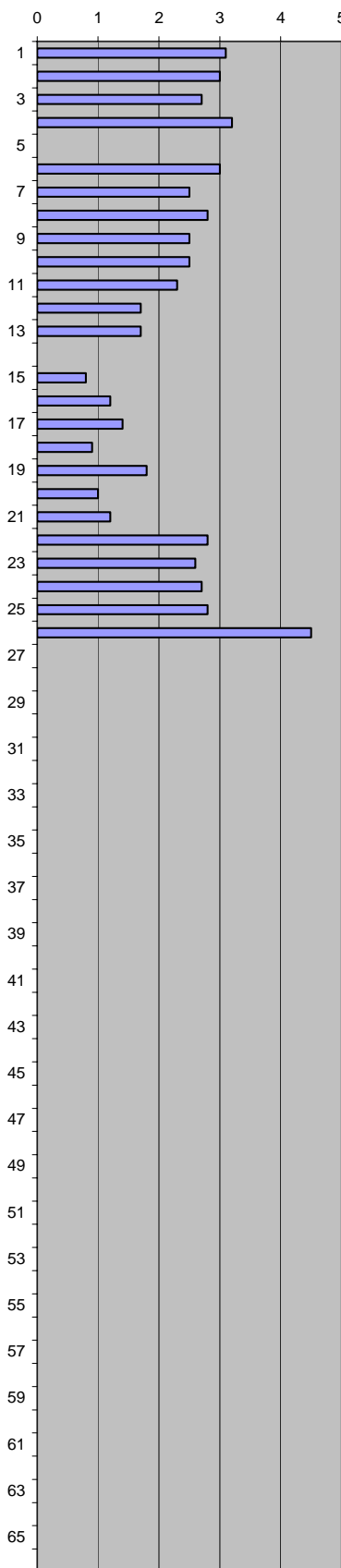


Company: DONG Well: 5605/10-1A # 1  
 Subject: Miniperm. Data  
 1917-1918 m

Nini-1A

Flowmeter: Large  
 Upstream P: 0,13 bar

Depth, m	Flow	Comments
1917.015	3.1	'oil-stain'
1917.030	3.0	'nxt plug 28 + 28V' 'frc'
1917.045	2.7	'nxt plug 28 + 28V' 'frc'
1917.060	3.2	'nxt plug 28 + 28V' 'frc'
1917.075		'nd'
1917.090	3.0	'nxt plug 28 + 28V' 'frc'
1917.105	2.5	'nxt plug 28 + 28V' 'frc'
1917.120	2.8	'nxt plug 28V'
1917.135	2.5	
1917.150	2.5	
1917.165	2.3	
1917.180	1.7	
1917.195	1.7	
1917.210		'nd'
1917.225	0.8	
1917.240	1.2	
1917.255	1.4	
1917.270	0.9	
1917.285	1.8	
1917.300	1.0	
1917.315	1.2	
1917.330	2.8	
1917.345	2.6	'nxt plug 29'
1917.360	2.7	'nxt plug 29'
1917.375	2.8	'nxt plug 29' 'frc'
1917.390	4.5	'nxt plug 29' 'frc'
1917.405		'nd'
1917.420	0.0	Flowmeter:
1917.435	0.0	small
1917.450	0.0	
1917.465	0.0	
1917.480	0.0	'Shale'
1917.495	0.0	
1917.510	0.0	
1917.525	0.0	
1917.540	0.0	
1917.555	0.0	
1917.570	0.0	
1917.585	0.0	
1917.600	0.0	
1917.615	0.0	
1917.630	0.0	
1917.645	0.0	
1917.660	0.0	
1917.675	0.0	
1917.690	0.0	
1917.705	0.0	
1917.720	0.0	
1917.735	0.0	
1917.750	0.0	
1917.765	0.0	
1917.780	0.0	
1917.795	0.0	
1917.810	0.0	
1917.825	0.0	
1917.840	0.0	
1917.855	0.0	
1917.870	0.0	
1917.885	0.0	
1917.900	0.0	
1917.915	0.0	
1917.930	0.0	
1917.945	0.0	
1917.960	0.0	
1917.975	0.0	
1917.990	0.0	



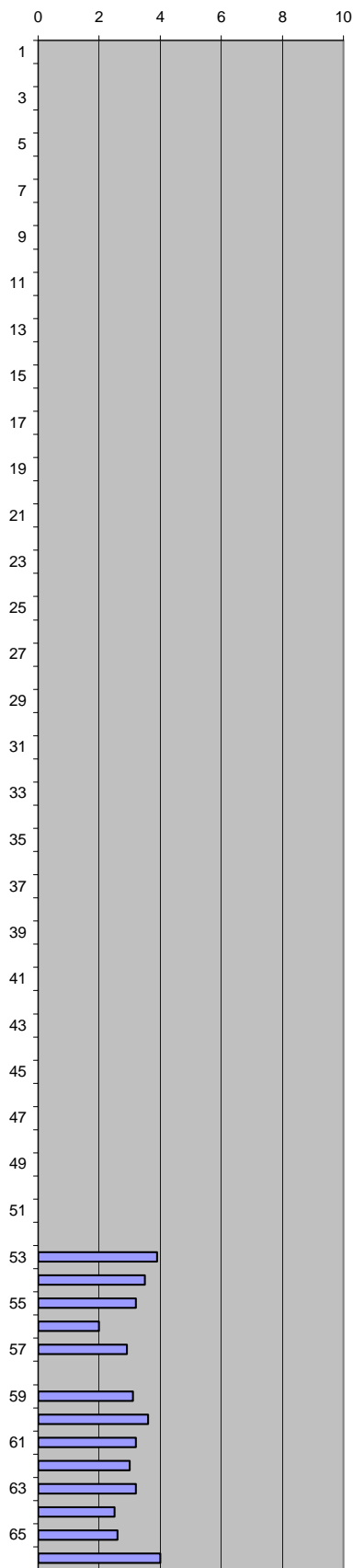
### 3.3 Nini-3 data

Company: DONG Well: 5605/10-3 # 1  
 Subject: Miniperm. Data  
 1696 -1697 m

Nini-3

Flowmeter: Large  
 Upstream P: 0,13 bar

Depth, m	Flow	Comments
1696.015		'Shale'
1696.030		
1696.045		
1696.060		
1696.075		
1696.090		
1696.105		
1696.120		
1696.135		
1696.150		
1696.165		
1696.180		
1696.195		
1696.210		
1696.225		
1696.240		
1696.255		
1696.270		
1696.285		
1696.300		
1696.315		
1696.330		
1696.345		
1696.360		
1696.375		
1696.390		
1696.405		
1696.420		
1696.435		
1696.450		
1696.465		
1696.480		
1696.495		
1696.510		
1696.525		
1696.540		
1696.555		
1696.570		
1696.585		
1696.600		
1696.615		
1696.630		
1696.645		
1696.660		
1696.675		
1696.690		
1696.705		
1696.720		
1696.735		
1696.750		
1696.765		
1696.780		
1696.795	3.9	'oil-stain'
1696.810	3.5	
1696.825	3.2	
1696.840	2.0	
1696.855	2.9	
1696.870		'nd'
1696.885	3.1	
1696.900	3.6	
1696.915	3.2	
1696.930	3.0	
1696.945	3.2	
1696.960	2.5	'nxt plug 40'
1696.975	2.6	'nxt plug 40'
1696.990	4.0	'edge'

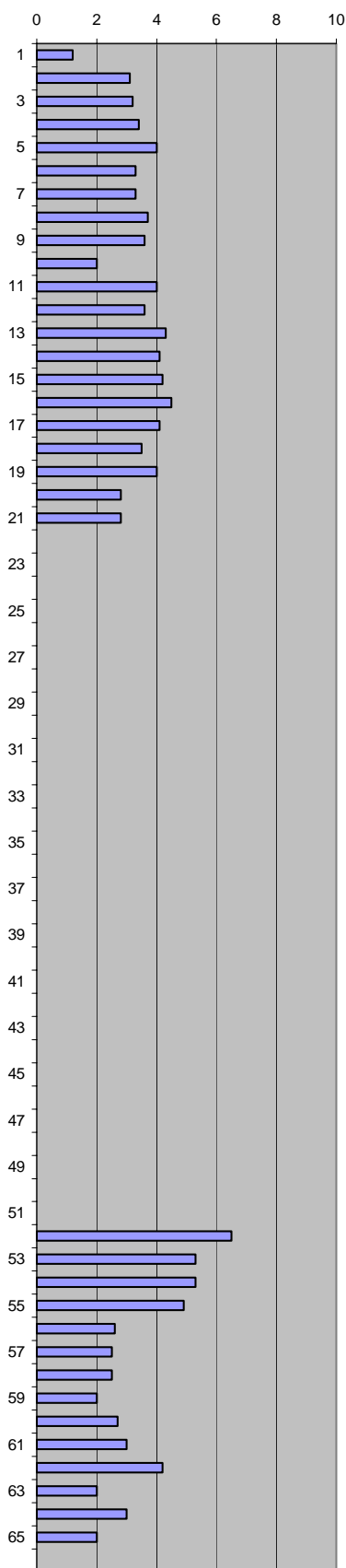


Company: DONG Well: 5605/10-3 # 1  
 Subject: Miniperm. Data  
 1697 -1698 m

Nini-3

Flowmeter: Large  
 Upstream P: 0,13 bar

Depth, m	Flow	Comments
1697.015	1.2	'oil-stain'
1697.030	3.1	
1697.045	3.2	
1697.060	3.4	
1697.075	4.0	
1697.090	3.3	
1697.105	3.3	
1697.120	3.7	'nxt plug 40V'
1697.135	3.6	'nxt plug 40V'
1697.150	2.0	
1697.165	4.0	'frc'
1697.180	3.6	
1697.195	4.3	
1697.210	4.1	'nxt plug 41'
1697.225	4.2	
1697.240	4.5	
1697.255	4.1	'nxt plug'
1697.270	3.5	'nxt plug'
1697.285	4.0	'nxt plug'
1697.300	2.8	
1697.315	2.8	
1697.330		'Shale'
1697.345		
1697.360		
1697.375		
1697.390		
1697.405		
1697.420		
1697.435		
1697.450		
1697.465		
1697.480		
1697.495		
1697.510		
1697.525		
1697.540		
1697.555		
1697.570		
1697.585		
1697.600		
1697.615		
1697.630		
1697.645		
1697.660		
1697.675		
1697.690		
1697.705		
1697.720		
1697.735		
1697.750		
1697.765		
1697.780	6.5	'frc'
1697.795	5.3	
1697.810	5.3	'oil-stain'
1697.825	4.9	
1697.840	2.6	
1697.855	2.5	
1697.870	2.5	
1697.885	2.0	
1697.900	2.7	
1697.915	3.0	
1697.930	4.2	
1697.945	2.0	
1697.960	3.0	
1697.975	2.0	
1697.990		'nd'

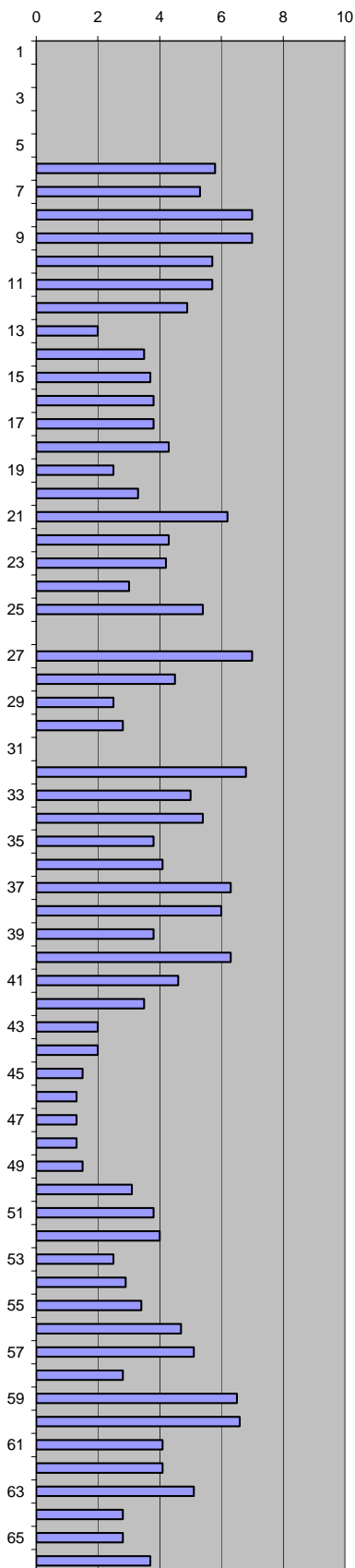


Company: DONG Well: 5605/10-3 # 1  
 Subject: Miniperm. Data  
 1698 -1699 m

Nini-3

Flowmeter: Large  
 Upstream P: 0,13 bar

Depth, m	Flow	Comments
1698.015		'oil-stain'
1698.030		'nd'
1698.045		'nd'
1698.060		'nd'
1698.075		'nd'
1698.090	5.8	
1698.105	5.3	
1698.120	7.0	' v-soft'
1698.135	7.0	' v-soft'
1698.150	5.7	
1698.165	5.7	
1698.180	4.9	
1698.195	2.0	
1698.210	3.5	
1698.225	3.7	
1698.240	3.8	
1698.255	3.8	
1698.270	4.3	'nxt plug 44'
1698.285	2.5	
1698.300	3.3	
1698.315	6.2	
1698.330	4.3	
1698.345	4.2	
1698.360	3.0	
1698.375	5.4	'frc'
1698.390		'nd'
1698.405	7.0	' v-soft'
1698.420	4.5	
1698.435	2.5	epoxy ?
1698.450	2.8	epoxy ?
1698.465		'nd'
1698.480	6.8	
1698.495	5.0	
1698.510	5.4	
1698.525	3.8	
1698.540	4.1	
1698.555	6.3	
1698.570	6.0	
1698.585	3.8	
1698.600	6.3	
1698.615	4.6	
1698.630	3.5	
1698.645	2.0	'nxt plug 45DS'
1698.660	2.0	'nxt plug 45DS'
1698.675	1.5	
1698.690	1.3	
1698.705	1.3	
1698.720	1.3	
1698.735	1.5	
1698.750	3.1	
1698.765	3.8	
1698.780	4.0	
1698.795	2.5	
1698.810	2.9	
1698.825	3.4	
1698.840	4.7	
1698.855	5.1	
1698.870	2.8	
1698.885	6.5	
1698.900	6.6	
1698.915	4.1	
1698.930	4.1	
1698.945	5.1	
1698.960	2.8	
1698.975	2.8	
1698.990	3.7	'edge'

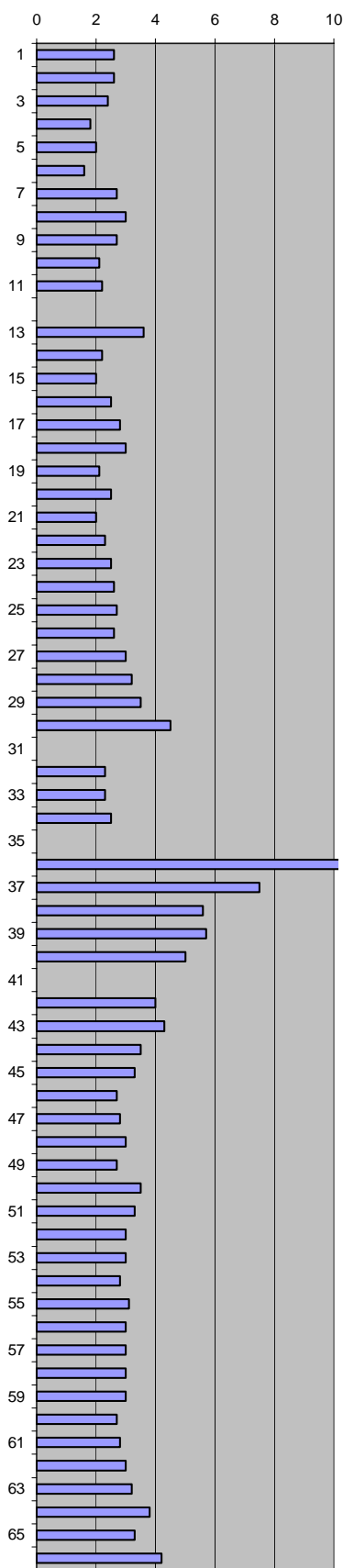


Company: DONG Well: 5605/10-3 # 1  
 Subject: Miniperm. Data  
 1699 -1700 m

Nini-3

Flowmeter: Large  
 Upstream P: 0,13 bar

Depth, m	Flow	Comments
1699.015	2.6	'oil-stain'
1699.030	2.6	'nxt plug 46'
1699.045	2.4	'nxt plug 46'
1699.060	1.8	
1699.075	2.0	
1699.090	1.6	
1699.105	2.7	
1699.120	3.0	'nxt plug 46V'
1699.135	2.7	'nxt plug 46V'
1699.150	2.1	
1699.165	2.2	
1699.180		'nd'
1699.195	3.6	
1699.210	2.2	
1699.225	2.0	
1699.240	2.5	
1699.255	2.8	
1699.270	3.0	
1699.285	2.1	
1699.300	2.5	
1699.315	2.0	
1699.330	2.3	'nxt plug 47'
1699.345	2.5	'nxt plug 47'
1699.360	2.6	'nxt plug 47'
1699.375	2.7	'nxt plug'
1699.390	2.6	'nxt plug'
1699.405	3.0	'nxt plug'
1699.420	3.2	
1699.435	3.5	
1699.450	4.5	'frc'
1699.465		'nd'
1699.480	2.3	
1699.495	2.3	
1699.510	2.5	
1699.525		'nd'
1699.540	11.5	
1699.555	7.5	
1699.570	5.6	
1699.585	5.7	
1699.600	5.0	
1699.615		'nd'
1699.630	4.0	'nxt plug 48DS'
1699.645	4.3	'nxt plug 48DS'
1699.660	3.5	
1699.675	3.3	
1699.690	2.7	
1699.705	2.8	
1699.720	3.0	
1699.735	2.7	
1699.750	3.5	
1699.765	3.3	
1699.780	3.0	
1699.795	3.0	
1699.810	2.8	
1699.825	3.1	
1699.840	3.0	
1699.855	3.0	
1699.870	3.0	
1699.885	3.0	
1699.900	2.7	
1699.915	2.8	
1699.930	3.0	
1699.945	3.2	
1699.960	3.8	
1699.975	3.3	
1699.990	4.2	'edge'

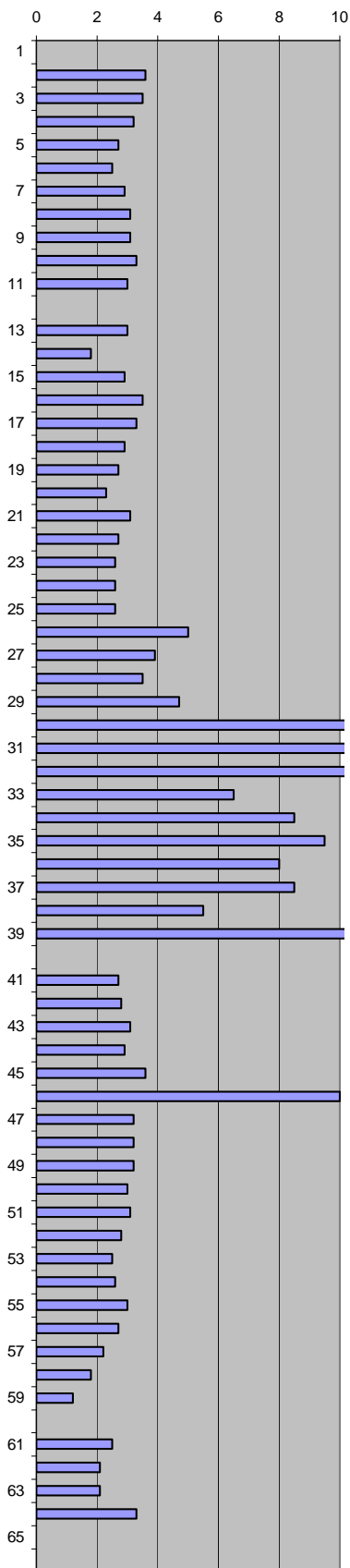


Company: DONG Well: 5605/10-3 # 1  
 Subject: Miniperm. Data 1700-1701 m

Nini-3

Flowmeter: Large  
 Upstream P: 0,13 bar

Depth, m	Flow	Comments
1700.015		'nd'
1700.030	3.6	'nxt plug 49'
1700.045	3.5	'nxt plug 49'
1700.060	3.2	
1700.075	2.7	'oil-stain'
1700.090	2.5	
1700.105	2.9	
1700.120	3.1	
1700.135	3.1	
1700.150	3.3	
1700.165	3.0	
1700.180		'nd'
1700.195	3.0	
1700.210	1.8	
1700.225	2.9	
1700.240	3.5	
1700.255	3.3	
1700.270	2.9	
1700.285	2.7	'nxt plug 50'
1700.300	2.3	'nxt plug 50'
1700.315	3.1	'nxt plug 50'
1700.330	2.7	
1700.345	2.6	'nxt plug'
1700.360	2.6	'nxt plug'
1700.375	2.6	'nxt plug'
1700.390	5.0	'frc'
1700.405	3.9	
1700.420	3.5	
1700.435	4.7	
1700.450	10.5	'v-soft'
1700.465	10.5	'v-soft'
1700.480	10.3	'v-soft'
1700.495	6.5	
1700.510	8.5	
1700.525	9.5	
1700.540	8.0	
1700.555	8.5	
1700.570	5.5	
1700.585	11.2	'v-soft'
1700.600		'nd'
1700.615	2.7	'nxt plug 51DS'
1700.630	2.8	'nxt plug 51DS'
1700.645	3.1	
1700.660	2.9	
1700.675	3.6	
1700.690	10.0	'v-soft'
1700.705	3.2	
1700.720	3.2	
1700.735	3.2	
1700.750	3.0	
1700.765	3.1	
1700.780	2.8	
1700.795	2.5	
1700.810	2.6	
1700.825	3.0	
1700.840	2.7	
1700.855	2.2	
1700.870	1.8	
1700.885	1.2	
1700.900		'nd'
1700.915	2.5	
1700.930	2.1	
1700.945	2.1	
1700.960	3.3	'frc'
1700.975		'nd'
1700.990		'nd'

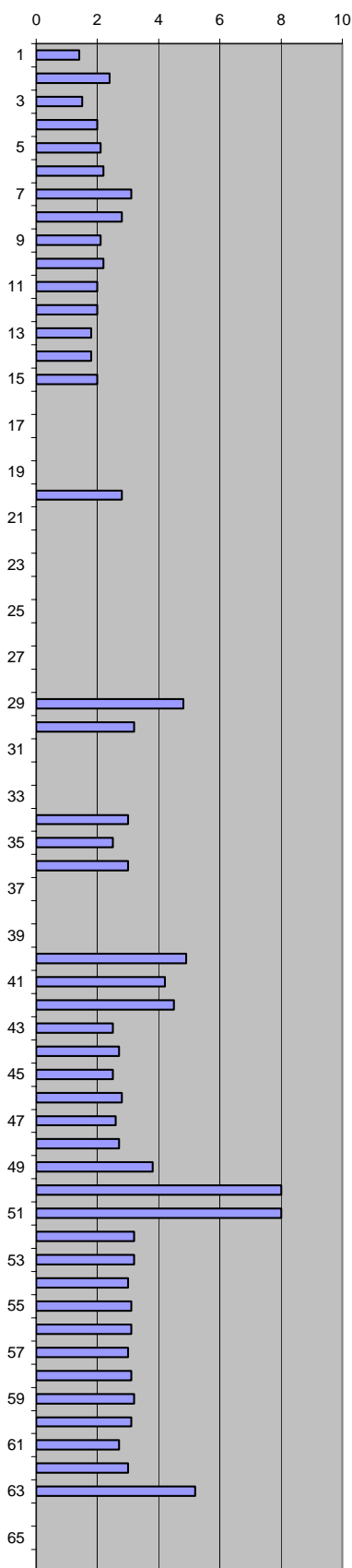


Company: DONG Well: 5605/10-3 # 1  
 Subject: Miniperm. Data 1701-1702 m

Nini-3

Flowmeter: Large  
 Upstream P: 0,13 bar

Depth, m	Flow	Comments
1701.015	1.4	'oil-stain'
1701.030	2.4	
1701.045	1.5	
1701.060	2.0	
1701.075	2.1	
1701.090	2.2	
1701.105	3.1	'nxt plug 52'
1701.120	2.8	'nxt plug 52'
1701.135	2.1	
1701.150	2.2	
1701.165	2.0	
1701.180	2.0	
1701.195	1.8	
1701.210	1.8	
1701.225	2.0	
1701.240		'nd', 'epoxy'
1701.255		'nd', 'epoxy'
1701.270		'nd', 'epoxy'
1701.285		'nd', 'epoxy'
1701.300	2.8	
1701.315		'nd', 'epoxy'
1701.330		'nd', 'epoxy'
1701.345		'nd', 'epoxy'
1701.360		'nd', 'epoxy'
1701.375		'nd', 'epoxy'
1701.390		'nd', 'epoxy'
1701.405		'nd', 'epoxy'
1701.420		'nd', 'epoxy'
1701.435	4.8	
1701.450	3.2	
1701.465		'nd', 'epoxy'
1701.480		'nd', 'epoxy'
1701.495		'nd', 'epoxy'
1701.510	3.0	
1701.525	2.5	
1701.540	3.0	
1701.555		'nd', 'epoxy'
1701.570		'nd', 'epoxy'
1701.585		'nd', 'epoxy'
1701.600	4.9	'nxt plug 54DS'
1701.615	4.2	'nxt plug 54DS'
1701.630	4.5	'nxt plug 54DS'
1701.645	2.5	
1701.660	2.7	
1701.675	2.5	
1701.690	2.8	
1701.705	2.6	
1701.720	2.7	
1701.735	3.8	
1701.750	8.0	'v-soft'
1701.765	8.0	'v-soft'
1701.780	3.2	
1701.795	3.2	
1701.810	3.0	
1701.825	3.1	
1701.840	3.1	
1701.855	3.0	
1701.870	3.1	
1701.885	3.2	
1701.900	3.1	
1701.915	2.7	
1701.930	3.0	
1701.945	5.2	'frc'
1701.960		'nd'
1701.975		'nd'
1701.990		'nd'



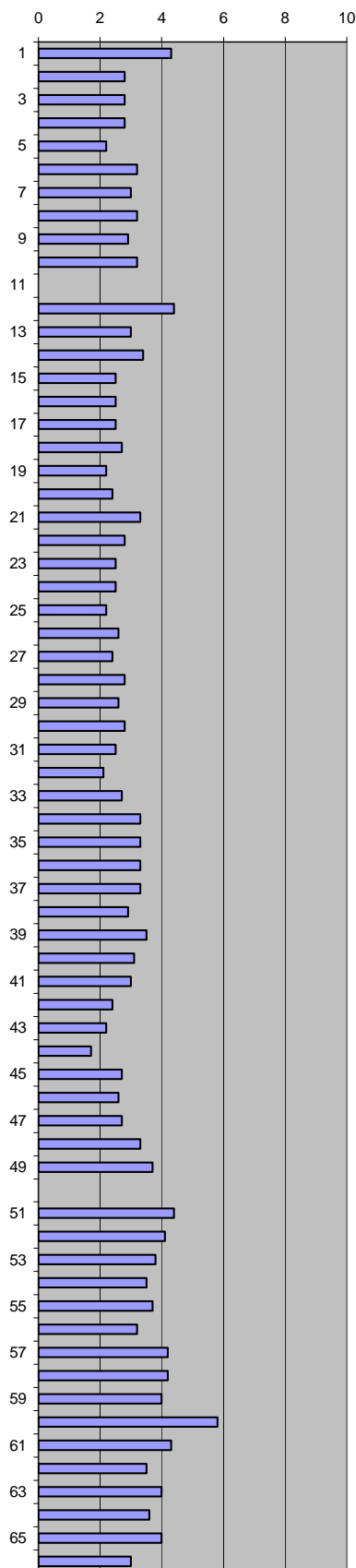


Company: DONG Well: 5605/10-3 # 1  
 Subject: Miniperm. Data 1702-1703 m

Nini-3

Flowmeter: Large  
 Upstream P: 0,13 bar

Depth, m	Flow	Comments
1702.015	4.3	'edge'
1702.030	2.8	'nxt plug 55'
1702.045	2.8	'nxt plug 55'
1702.060	2.8	'nxt plug 55'
1702.075	2.2	
1702.090	3.2	'oil-stain'
1702.105	3.0	
1702.120	3.2	
1702.135	2.9	
1702.150	3.2	
1702.165		'nd'
1702.180	4.4	'frc'
1702.195	3.0	
1702.210	3.4	
1702.225	2.5	
1702.240	2.5	
1702.255	2.5	
1702.270	2.7	
1702.285	2.2	
1702.300	2.4	
1702.315	3.3	'nxt plug 56'
1702.330	2.8	'nxt plug 56'
1702.345	2.5	'nxt plug 56'
1702.360	2.5	'nxt plug'
1702.375	2.2	'nxt plug'
1702.390	2.6	
1702.405	2.4	
1702.420	2.8	
1702.435	2.6	
1702.450	2.8	
1702.465	2.5	
1702.480	2.1	'frc'
1702.495	2.7	'frc'
1702.510	3.3	
1702.525	3.3	
1702.540	3.3	
1702.555	3.3	
1702.570	2.9	
1702.585	3.5	'frc'
1702.600	3.1	
1702.615	3.0	
1702.630	2.4	'nxt plug 57DS'
1702.645	2.2	'nxt plug 57DS'
1702.660	1.7	
1702.675	2.7	'nxt plug V'
1702.690	2.6	'nxt plug V'
1702.705	2.7	'nxt plug V'
1702.720	3.3	
1702.735	3.7	
1702.750		'nd'
1702.765	4.4	
1702.780	4.1	
1702.795	3.8	
1702.810	3.5	
1702.825	3.7	
1702.840	3.2	
1702.855	4.2	
1702.870	4.2	
1702.885	4.0	
1702.900	5.8	
1702.915	4.3	
1702.930	3.5	
1702.945	4.0	
1702.960	3.6	
1702.975	4.0	
1702.990	3.0	

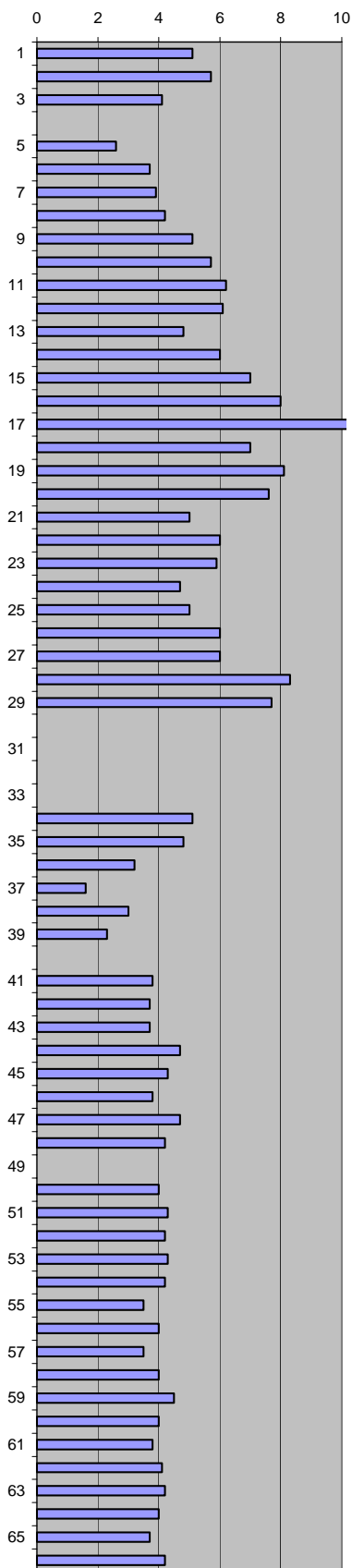


Company: DONG Well: 5605/10-3 # 1  
 Subject: Miniperm. Data  
 1703-1704 m

Nini-3

Flowmeter: Large  
 Upstream P: 0,13 bar

Depth, m	Flow	Comments
1703.015	5.1	'oil-stain'
1703.030	5.7	'nxt plug'
1703.045	4.1	
1703.060		'nd'
1703.075	2.6	'edge' 'epoxy'
1703.090	3.7	
1703.105	3.9	
1703.120	4.2	
1703.135	5.1	
1703.150	5.7	
1703.165	6.2	
1703.180	6.1	
1703.195	4.8	
1703.210	6.0	
1703.225	7.0	'v-soft'
1703.240	8.0	'v-soft'
1703.255	13.5	'v-soft'
1703.270	7.0	'v-soft'
1703.285	8.1	'nxt plug 59'
1703.300	7.6	'nxt plug 59'
1703.315	5.0	'nxt plug 59'
1703.330	6.0	'nxt plug 59'
1703.345	5.9	'nxt plug 59'
1703.360	4.7	'nxt plug'
1703.375	5.0	'nxt plug'
1703.390	6.0	'nxt plug'
1703.405	6.0	
1703.420	8.3	'v-soft'
1703.435	7.7	'v-soft'
1703.450		'nd', 'v-soft'
1703.465		'nd', 'v-soft'
1703.480		'nd', 'v-soft'
1703.495		'nd', 'v-soft'
1703.510	5.1	
1703.525	4.8	
1703.540	3.2	
1703.555	1.6	
1703.570	3.0	
1703.585	2.3	
1703.600		'nd'
1703.615	3.8	'nxt plug 60DS'
1703.630	3.7	'nxt plug 60DS'
1703.645	3.7	'nxt plug 60DS'
1703.660	4.7	
1703.675	4.3	
1703.690	3.8	
1703.705	4.7	
1703.720	4.2	
1703.735		'epoxy'
1703.750	4.0	
1703.765	4.3	
1703.780	4.2	
1703.795	4.3	
1703.810	4.2	
1703.825	3.5	
1703.840	4.0	
1703.855	3.5	
1703.870	4.0	
1703.885	4.5	'frc'
1703.900	4.0	
1703.915	3.8	
1703.930	4.1	
1703.945	4.2	
1703.960	4.0	
1703.975	3.7	
1703.990	4.2	

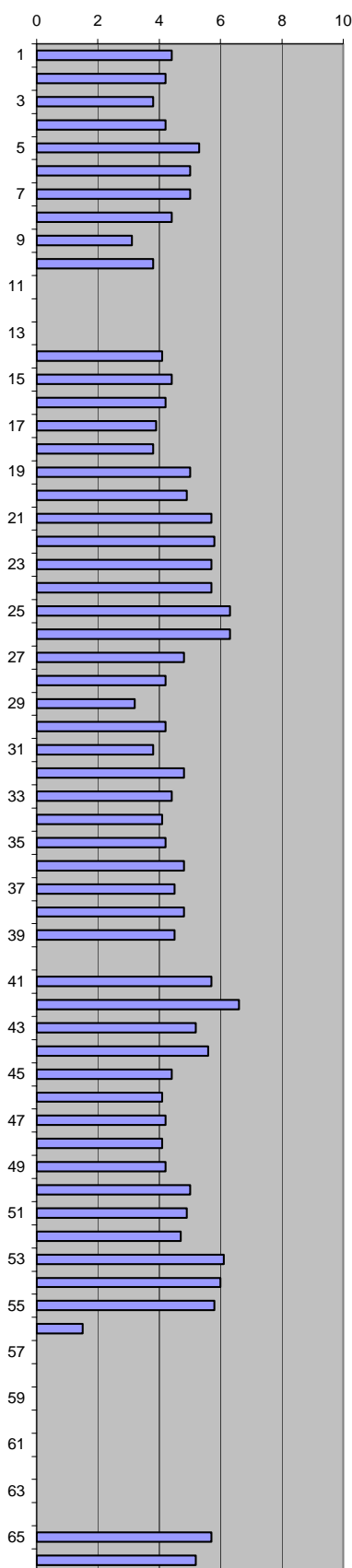


Company: DONG Well: 5605/10-3 #1  
 Subject: Miniperm. Data  
 1704-1705 m

Nini-3

Flowmeter: Large  
 Upstream P: 0,13 bar

Depth, m	Flow	Comments
1704.015	4.4	'oil-stain'
1704.030	4.2	
1704.045	3.8	'nxt plug 61'
1704.060	4.2	'nxt plug 61'
1704.075	5.3	'nxt plug 61'
1704.090	5.0	'v-soft'
1704.105	5.0	'v-soft'
1704.120	4.4	
1704.135	3.1	
1704.150	3.8	
1704.165		'frc' 'epoxy'
1704.180		'frc' 'epoxy'
1704.195		'frc' 'epoxy'
1704.210	4.1	
1704.225	4.4	
1704.240	4.2	
1704.255	3.9	
1704.270	3.8	
1704.285	5.0	
1704.300	4.9	
1704.315	5.7	'nxt plug 62'
1704.330	5.8	'nxt plug 62'
1704.345	5.7	'nxt plug 62'
1704.360	5.7	'nxt plug'
1704.375	6.3	'nxt plug'
1704.390	6.3	'nxt plug'
1704.405	4.8	
1704.420	4.2	
1704.435	3.2	
1704.450	4.2	
1704.465	3.8	
1704.480	4.8	
1704.495	4.4	
1704.510	4.1	
1704.525	4.2	
1704.540	4.8	
1704.555	4.5	
1704.570	4.8	
1704.585	4.5	
1704.600		'nd'
1704.615	5.7	'nxt plug 63DS'
1704.630	6.6	'nxt plug 63DS'
1704.645	5.2	'nxt plug 63DS'
1704.660	5.6	'nxt plug 63DS'
1704.675	4.4	
1704.690	4.1	
1704.705	4.2	
1704.720	4.1	
1704.735	4.2	
1704.750	5.0	
1704.765	4.9	
1704.780	4.7	'frc'
1704.795	6.1	'frc'
1704.810	6.0	
1704.825	5.8	
1704.840	1.5	'epoxy'
1704.855		'nd' 'surface'
1704.870		'shale', 'nd'
1704.885		
1704.900		
1704.915		
1704.930		
1704.945		
1704.960		
1704.975	5.7	
1704.990	5.2	

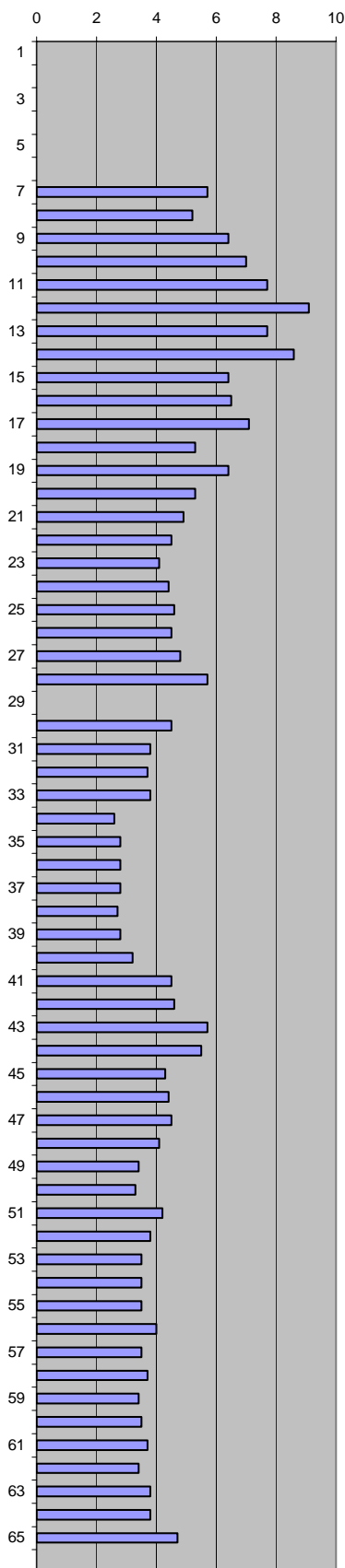


Company: DONG Well: 5605/10-3 # 1  
 Subject: Miniperm. Data 1705-1706 m

Nini-3

Flowmeter: Large  
 Upstream P: 0,13 bar

Depth, m	Flow	Comments
1705.015		'oil-stain'
1705.030		'nd' 'epoxy
1705.045		'nd' 'epoxy
1705.060		'nd' 'epoxy
1705.075		'nd' 'epoxy
1705.090		'nd' 'epoxy
1705.105	5.7	
1705.120	5.2	
1705.135	6.4	
1705.150	7.0	
1705.165	7.7	
1705.180	9.1	'nxt plug'
1705.195	7.7	'nxt plug'
1705.210	8.6	'nxt plug'
1705.225	6.4	'nxt plug'
1705.240	6.5	
1705.255	7.1	
1705.270	5.3	
1705.285	6.4	
1705.300	5.3	
1705.315	4.9	'nxt plug'
1705.330	4.5	'nxt plug'
1705.345	4.1	'nxt plug'
1705.360	4.4	'nxt plug'
1705.375	4.6	
1705.390	4.5	
1705.405	4.8	'nxt plug 65'
1705.420	5.7	'nxt plug 65'
1705.435		'nd'
1705.450	4.5	'nxt plug 65'
1705.465	3.8	
1705.480	3.7	
1705.495	3.8	
1705.510	2.6	
1705.525	2.8	
1705.540	2.8	
1705.555	2.8	
1705.570	2.7	
1705.585	2.8	
1705.600	3.2	
1705.615	4.5	
1705.630	4.6	'nxt plug 66'
1705.645	5.7	'nxt plug 66'
1705.660	5.5	'nxt plug 66'
1705.675	4.3	'nxt plug 66'
1705.690	4.4	
1705.705	4.5	
1705.720	4.1	
1705.735	3.4	
1705.750	3.3	
1705.765	4.2	
1705.780	3.8	
1705.795	3.5	
1705.810	3.5	
1705.825	3.5	
1705.840	4.0	
1705.855	3.5	
1705.870	3.7	
1705.885	3.4	
1705.900	3.5	
1705.915	3.7	
1705.930	3.4	
1705.945	3.8	
1705.960	3.8	
1705.975	4.7	
1705.990		'nd'

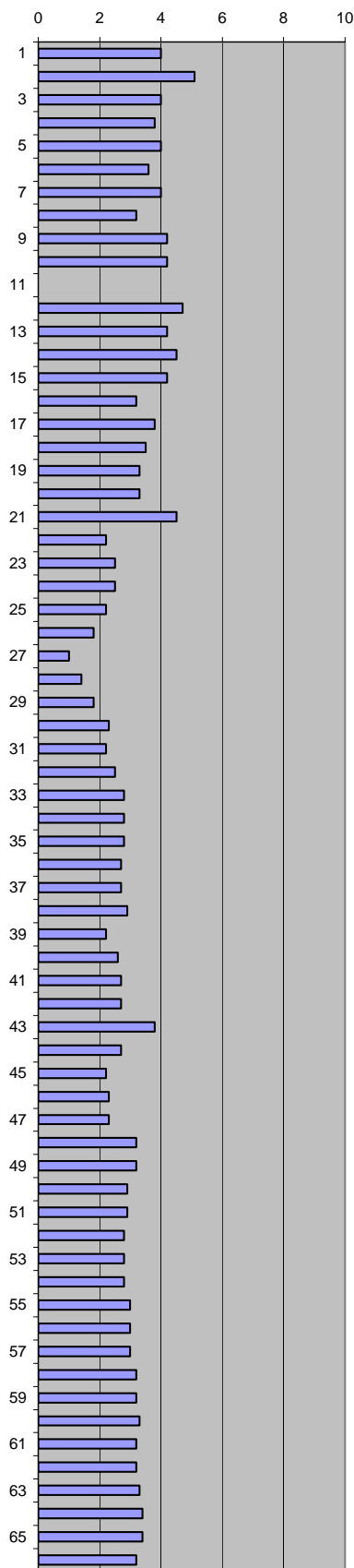


Company: **DONG** Well: **5605/10-3 # 1**  
 Subject: Miniperm. Data 1706-1707 m

Nini-3

Flowmeter: Large  
 Upstream P: 0,13 bar

Depth, m	Flow	Comments
1706.015	4.0	'oil-stain'
1706.030	5.1	'nxt plug 67'
1706.045	4.0	'nxt plug 67'
1706.060	3.8	'nxt plug 67'
1706.075	4.0	'nxt plug 67 V'
1706.090	3.6	'nxt plug 67 V'
1706.105	4.0	'nxt plug 67 V'
1706.120	3.2	'nxt plug 67 V'
1706.135	4.2	'nxt plug 67 V'
1706.150	4.2	
1706.165		'nd'
1706.180	4.7	
1706.195	4.2	
1706.210	4.5	
1706.225	4.2	
1706.240	3.2	
1706.255	3.8	
1706.270	3.5	
1706.285	3.3	
1706.300	3.3	
1706.315	4.5	
1706.330	2.2	nxt plug 68'
1706.345	2.5	nxt plug 68'
1706.360	2.5	nxt plug 68'
1706.375	2.2	nxt plug 68'
1706.390	1.8	
1706.405	1.0	
1706.420	1.4	
1706.435	1.8	
1706.450	2.3	
1706.465	2.2	
1706.480	2.5	
1706.495	2.8	
1706.510	2.8	
1706.525	2.8	
1706.540	2.7	
1706.555	2.7	
1706.570	2.9	
1706.585	2.2	
1706.600	2.6	
1706.615	2.7	
1706.630	2.7	
1706.645	3.8	
1706.660	2.7	'nxt plug 69'
1706.675	2.2	'nxt plug 69'
1706.690	2.3	'nxt plug 69'
1706.705	2.3	'nxt plug 69'
1706.720	3.2	
1706.735	3.2	
1706.750	2.9	
1706.765	2.9	
1706.780	2.8	
1706.795	2.8	
1706.810	2.8	
1706.825	3.0	
1706.840	3.0	
1706.855	3.0	
1706.870	3.2	
1706.885	3.2	
1706.900	3.3	
1706.915	3.2	
1706.930	3.2	
1706.945	3.3	
1706.960	3.4	
1706.975	3.4	
1706.990	3.2	

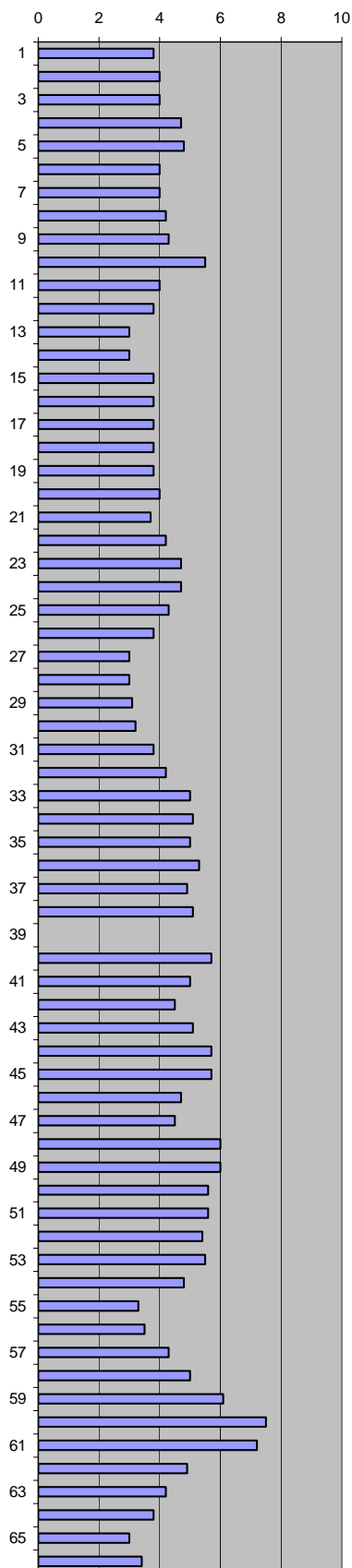


Company: **DONG** Well: **5605/10-3 # 1**  
 Subject: Miniperm. Data  
 1707-1708 m

Nini-3

Flowmeter: Large  
 Upstream P: 0,13 bar

Depth, m	Flow	Comments
1707.015	3.8	'oil-stain'
1707.030	4.0	'nxt plug 70'
1707.045	4.0	'nxt plug 70'
1707.060	4.7	'nxt plug 70'
1707.075	4.8	'nxt plug 70V'
1707.090	4.0	'nxt plug 70V'
1707.105	4.0	'nxt plug 70V'
1707.120	4.2	'nxt plug 70V'
1707.135	4.3	'nxt plug 70V'
1707.150	5.5	'frc'
1707.165	4.0	
1707.180	3.8	
1707.195	3.0	
1707.210	3.0	
1707.225	3.8	
1707.240	3.8	
1707.255	3.8	
1707.270	3.8	
1707.285	3.8	
1707.300	4.0	
1707.315	3.7	
1707.330	4.2	'nxt plug 71'
1707.345	4.7	'nxt plug 71'
1707.360	4.7	'nxt plug 71'
1707.375	4.3	'nxt plug 71'
1707.390	3.8	
1707.405	3.0	
1707.420	3.0	
1707.435	3.1	
1707.450	3.2	
1707.465	3.8	
1707.480	4.2	
1707.495	5.0	
1707.510	5.1	
1707.525	5.0	
1707.540	5.3	
1707.555	4.9	
1707.570	5.1	
1707.585		'nd'
1707.600	5.7	'frc'
1707.615	5.0	
1707.630	4.5	
1707.645	5.1	
1707.660	5.7	
1707.675	5.7	'nxt plug 72'
1707.690	4.7	'nxt plug 72'
1707.705	4.5	'nxt plug 72'
1707.720	6.0	'nxt plug 72'
1707.735	6.0	
1707.750	5.6	
1707.765	5.6	
1707.780	5.4	
1707.795	5.5	
1707.810	4.8	
1707.825	3.3	
1707.840	3.5	
1707.855	4.3	
1707.870	5.0	
1707.885	6.1	
1707.900	7.5	
1707.915	7.2	'frc'
1707.930	4.9	'frc'
1707.945	4.2	
1707.960	3.8	
1707.975	3.0	
1707.990	3.4	

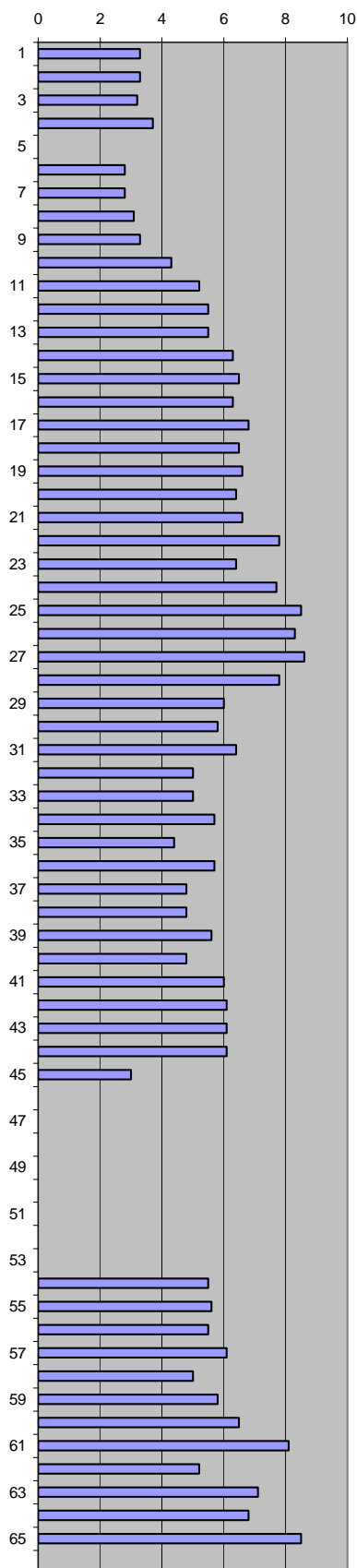


Company: DONG Well: 5605/10-3 # 1  
 Subject: Miniperm. Data 1708-1709 m

Nini-3

Flowmeter: Large  
 Upstream P: 0,13 bar

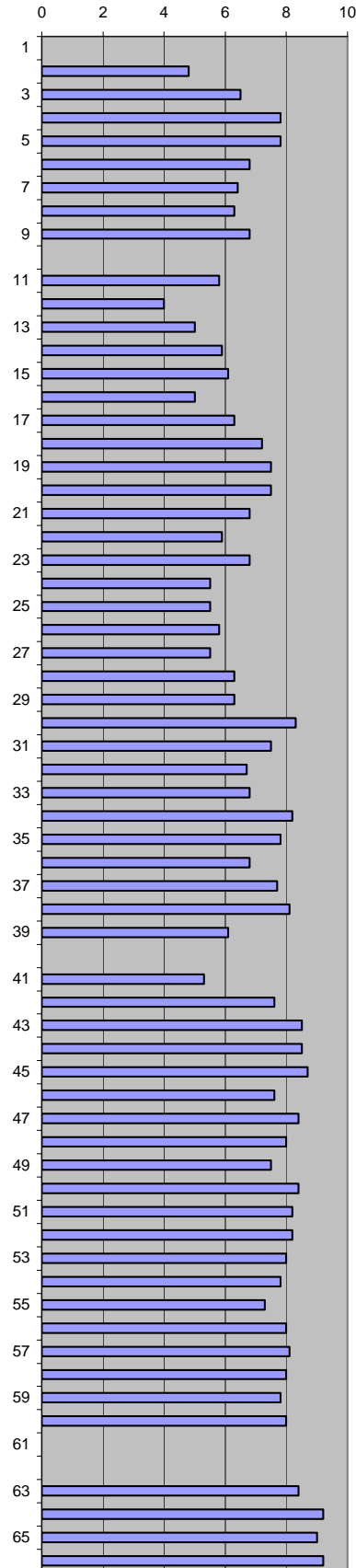
Depth, m	Flow	Comments
1708.015	3.3	'oil-stain'
1708.030	3.3	
1708.045	3.2	'nxt plug 73'
1708.060	3.7	'nxt plug 73'
1708.075		'nd'
1708.090	2.8	
1708.105	2.8	
1708.120	3.1	
1708.135	3.3	
1708.150	4.3	
1708.165	5.2	
1708.180	5.5	
1708.195	5.5	
1708.210	6.3	
1708.225	6.5	
1708.240	6.3	
1708.255	6.8	
1708.270	6.5	
1708.285	6.6	
1708.300	6.4	
1708.315	6.6	
1708.330	7.8	
1708.345	6.4	'nxt plug 74'
1708.360	7.7	'nxt plug 74'
1708.375	8.5	'nxt plug 74'
1708.390	8.3	'nxt plug 74'
1708.405	8.6	
1708.420	7.8	
1708.435	6.0	
1708.450	5.8	
1708.465	6.4	
1708.480	5.0	
1708.495	5.0	
1708.510	5.7	
1708.525	4.4	
1708.540	5.7	
1708.555	4.8	
1708.570	4.8	
1708.585	5.6	'frc', 'nxt plug'
1708.600	4.8	'frc', 'nxt plug'
1708.615	6.0	'nxt plug'
1708.630	6.1	'nxt plug'
1708.645	6.1	
1708.660	6.1	
1708.675	3.0	'frc' 'epoxy'
1708.690		'shale', 'nd'
1708.705		
1708.720		
1708.735		
1708.750		
1708.765		
1708.780		
1708.795		
1708.810	5.5	
1708.825	5.6	
1708.840	5.5	
1708.855	6.1	
1708.870	5.0	
1708.885	5.8	
1708.900	6.5	
1708.915	8.1	
1708.930	5.2	
1708.945	7.1	
1708.960	6.8	
1708.975	8.5	
1708.990		'nd'



1709-1710 m

Flowmeter: Large  
 Upstream P: 0,13 bar

Depth, m	Flow	Comments
1709.015		'oil-stain'
1709.030	4.8	'nxt plug 76' 'epoxy'
1709.045	6.5	'nxt plug 76' 'epoxy'
1709.060	7.8	'nxt plug 76' 'epoxy'
1709.075	7.8	'nxt plug V'
1709.090	6.8	'nxt plug V'
1709.105	6.4	'nxt plug V'
1709.120	6.3	'nxt plug V'
1709.135	6.8	'frc' 'epoxy'
1709.150		'nd'
1709.165	5.8	
1709.180	4.0	
1709.195	5.0	
1709.210	5.9	
1709.225	6.1	
1709.240	5.0	
1709.255	6.3	
1709.270	7.2	'nxt plug'
1709.285	7.5	'nxt plug'
1709.300	7.5	'nxt plug'
1709.315	6.8	
1709.330	5.9	
1709.345	6.8	
1709.360	5.5	
1709.375	5.5	'nxt plug 77'
1709.390	5.8	'nxt plug 77'
1709.405	5.5	'frc' 'epoxy'
1709.420	6.3	
1709.435	6.3	
1709.450	8.3	
1709.465	7.5	
1709.480	6.7	
1709.495	6.8	
1709.510	8.2	
1709.525	7.8	
1709.540	6.8	
1709.555	7.7	
1709.570	8.1	
1709.585	6.1	
1709.600		'nd'
1709.615	5.3	'epoxy'
1709.630	7.6	
1709.645	8.5	
1709.660	8.5	
1709.675	8.7	
1709.690	7.6	
1709.705	8.4	'nxt plug 78'
1709.720	8.0	'nxt plug 78'
1709.735	7.5	'nxt plug 78'
1709.750	8.4	
1709.765	8.2	
1709.780	8.2	
1709.795	8.0	
1709.810	7.8	
1709.825	7.3	
1709.840	8.0	
1709.855	8.1	
1709.870	8.0	
1709.885	7.8	
1709.900	8.0	
1709.915		'nd'
1709.930		'nd'
1709.945	8.4	
1709.960	9.2	
1709.975	9.0	
1709.990	9.2	



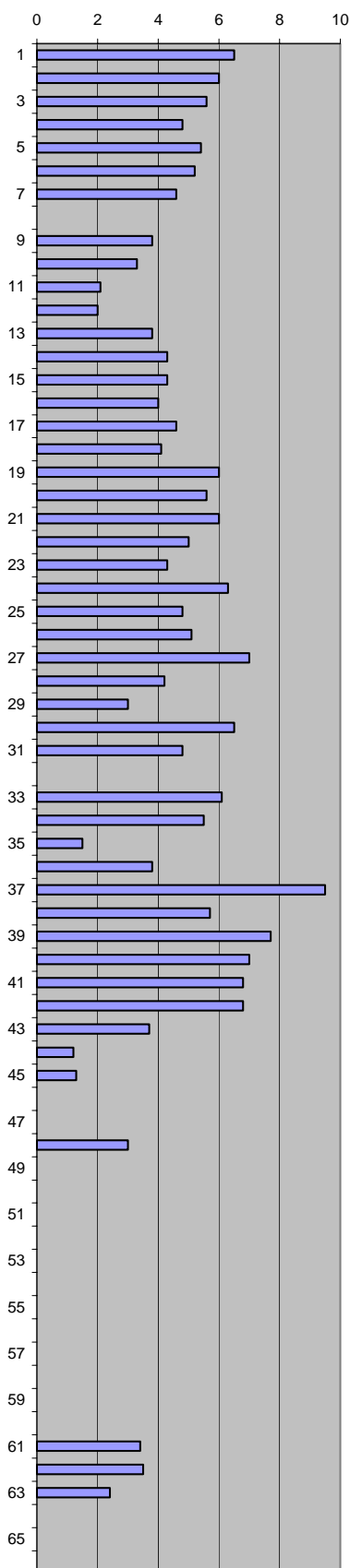


Company: DONG Well: 5605/10-3 # 1  
 Subject: Miniperm. Data 1710-1711 m

Nini-3

Flowmeter: Large  
 Upstream P: 0,13 bar

Depth, m	Flow	Comments
1710.015	6.5	'oil-stain'
1710.030	6.0	'nxt plug 79'
1710.045	5.6	'nxt plug 79'
1710.060	4.8	'nxt plug 79'
1710.075	5.4	
1710.090	5.2	
1710.105	4.6	
1710.120		'nd' 'epoxy'
1710.135	3.8	'frc'
1710.150	3.3	
1710.165	2.1	
1710.180	2.0	
1710.195	3.8	
1710.210	4.3	
1710.225	4.3	
1710.240	4.0	
1710.255	4.6	
1710.270	4.1	
1710.285	6.0	
1710.300	5.6	
1710.315	6.0	
1710.330	5.0	
1710.345	4.3	'nxt plug 80'
1710.360	6.3	'nxt plug 80'
1710.375	4.8	'nxt plug 80'
1710.390	5.1	'nxt plug 80'
1710.405	7.0	
1710.420	4.2	
1710.435	3.0	
1710.450	6.5	
1710.465	4.8	
1710.480		'shale', 'nd'
1710.495	6.1	
1710.510	5.5	
1710.525	1.5	
1710.540	3.8	
1710.555	9.5	
1710.570	5.7	
1710.585	7.7	'frc'
1710.600	7.0	'frc'
1710.615	6.8	
1710.630	6.8	'nxt plug 81'
1710.645	3.7	'nxt plug 81'
1710.660	1.2	'nxt plug 81'
1710.675	1.3	'nxt plug 81'
1710.690		'shale', 'nd'
1710.705		
1710.720	3.0	
1710.735		'shale', 'nd'
1710.750		
1710.765		
1710.780		
1710.795		
1710.810		
1710.825		
1710.840		
1710.855		
1710.870		
1710.885		
1710.900		
1710.915	3.4	'nxt plug 82'
1710.930	3.5	'nxt plug 82'
1710.945	2.4	
1710.960		'shale', 'nd'
1710.975		
1710.990		

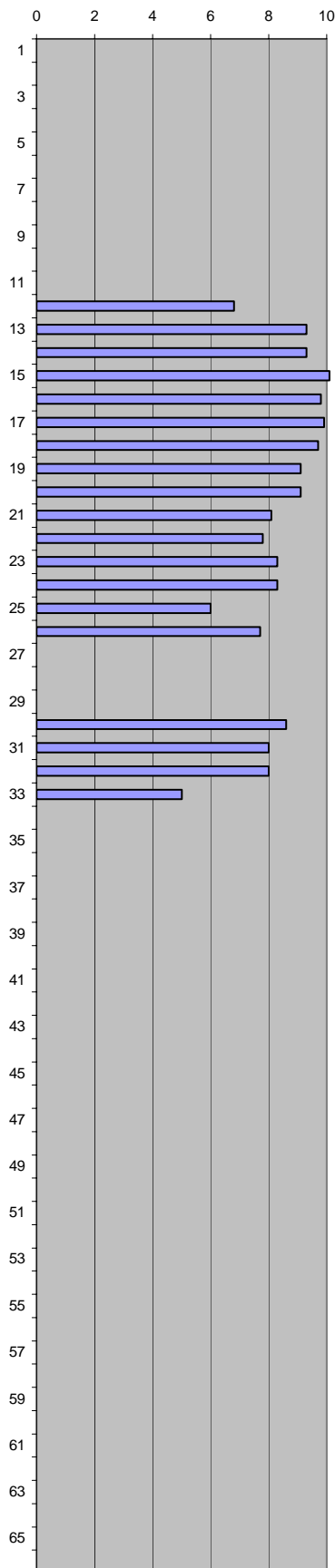


Company: DONG Well: 5605/10-3 # 1  
 Subject: Miniperm. Data 1711-1712 m

Nini-3

Flowmeter: Large  
 Upstream P: 0,13 bar

Depth, m	Flow	Comments
1711.015		'shale', 'nd'
1711.030		
1711.045		
1711.060		
1711.075		
1711.090		
1711.105		
1711.120		
1711.135		
1711.150		
1711.165		
1711.180	6.8	
1711.195	9.3	
1711.210	9.3	
1711.225	10.1	
1711.240	9.8	
1711.255	9.9	
1711.270	9.7	
1711.285	9.1	'nxt plug 83'
1711.300	9.1	'nxt plug 83'
1711.315	8.1	'nxt plug 83'
1711.330	7.8	'nxt plug 83'
1711.345	8.3	
1711.360	8.3	
1711.375	6.0	'frc' 'epoxy'
1711.390	7.7	'frc' 'epoxy'
1711.405		'shale', 'nd'
1711.420		
1711.435		
1711.450	8.6	
1711.465	8.0	
1711.480	8.0	
1711.495	5.0	'frc' 'epoxy'
1711.510		'shale', 'nd'
1711.525		
1711.540		
1711.555		
1711.570		
1711.585		
1711.600		
1711.615		
1711.630		
1711.645		
1711.660		
1711.675		
1711.690		
1711.705		
1711.720		
1711.735		
1711.750		
1711.765		
1711.780		
1711.795		
1711.810		
1711.825		
1711.840		
1711.855		
1711.870		
1711.885		
1711.900		
1711.915		
1711.930		
1711.945		
1711.960		
1711.975		
1711.990		

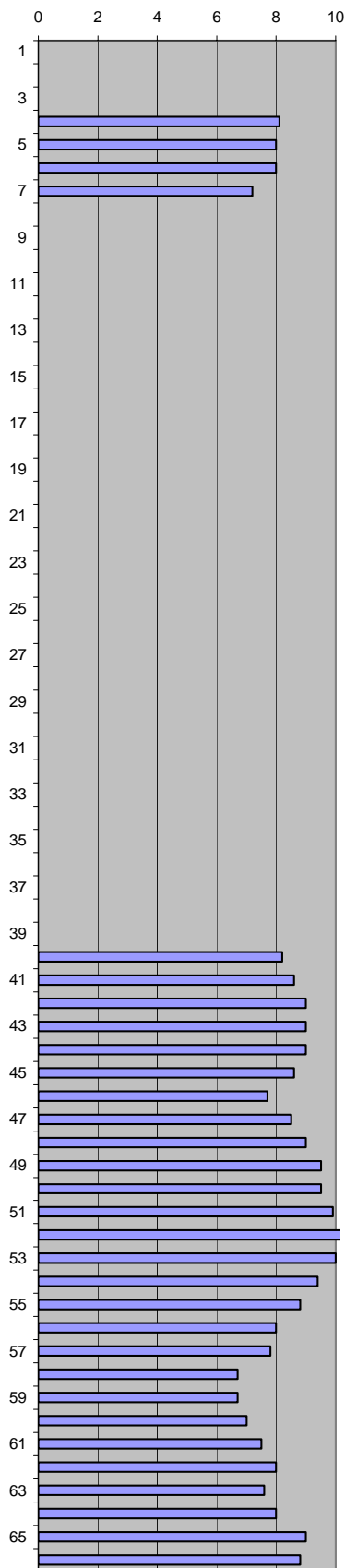


Company: DONG Well: 5605/10-3 # 1  
 Subject: Miniperm. Data 1712-1713 m

Nini-3

Flowmeter: medium  
 Upstream P: 0,13 bar

Depth, m	Flow	Comments
1712.015		'nd'
1712.030		'nd'
1712.045		'nd'
1712.060	8.1	'nxt plug 85'
1712.075	8.0	'nxt plug 85'
1712.090	8.0	
1712.105	7.2	
1712.120		'nd'
1712.135		'shale', 'nd'
1712.150		
1712.165		
1712.180		
1712.195		
1712.210		
1712.225		
1712.240		
1712.255		
1712.270		
1712.285		
1712.300		
1712.315		
1712.330		
1712.345		
1712.360		
1712.375		
1712.390		
1712.405		
1712.420		
1712.435		
1712.450		
1712.465		
1712.480		
1712.495		
1712.510		
1712.525		
1712.540		
1712.555		
1712.570		
1712.585		
1712.600	8.2	'oil-stain'
1712.615	8.6	
1712.630	9.0	
1712.645	9.0	
1712.660	9.0	
1712.675	8.6	'nxt plug 87'
1712.690	7.7	'nxt plug 87'
1712.705	8.5	'nxt plug 87'
1712.720	9.0	'nxt plug 87'
1712.735	9.5	
1712.750	9.5	
1712.765	9.9	
1712.780	10.2	
1712.795	10.0	
1712.810	9.4	
1712.825	8.8	
1712.840	8.0	
1712.855	7.8	
1712.870	6.7	
1712.885	6.7	
1712.900	7.0	
1712.915	7.5	
1712.930	8.0	
1712.945	7.6	
1712.960	8.0	
1712.975	9.0	
1712.990	8.8	

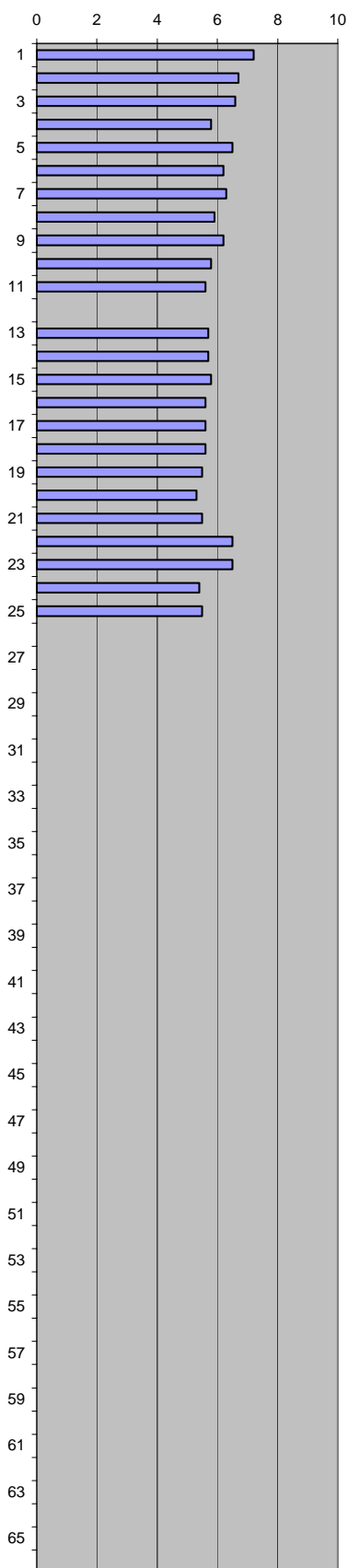


Company: DONG Well: 5605/10-3 # 1  
 Subject: Miniperm. Data  
 1713-1714 m

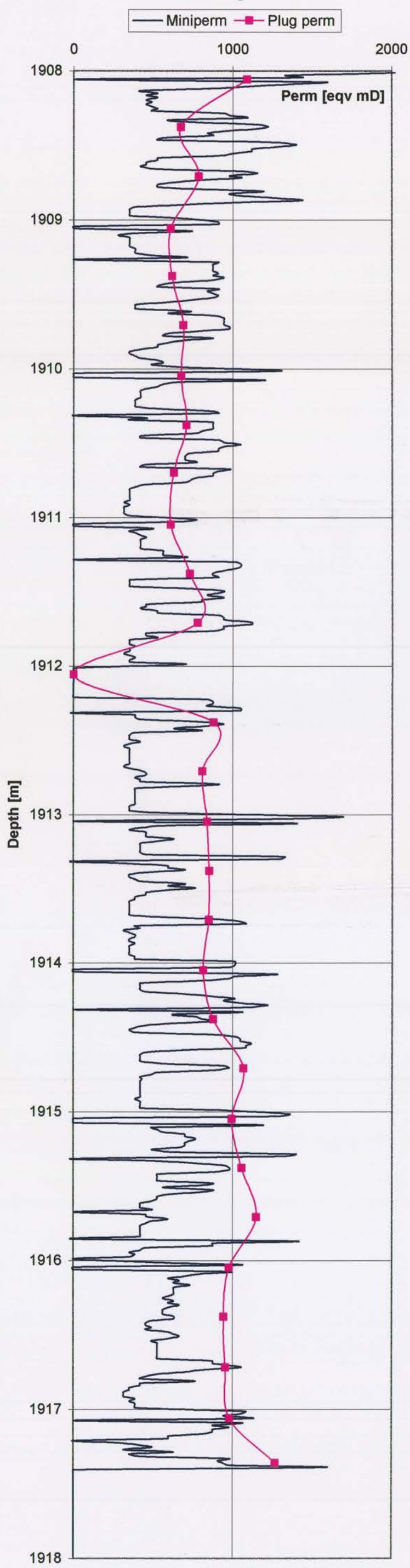
Nini-3

Flowmeter: medium  
 Upstream P: 0,13 bar

Depth, m	Flow	Comments
1713.015	7.2	'nxt plug 88'
1713.030	6.7	'nxt plug 88'
1713.045	6.6	'nxt plug 88'
1713.060	5.8	'nxt plug 88'
1713.075	6.5	
1713.090	6.2	'oil-stain'
1713.105	6.3	
1713.120	5.9	
1713.135	6.2	
1713.150	5.8	
1713.165	5.6	
1713.180		'nd'
1713.195	5.7	
1713.210	5.7	
1713.225	5.8	
1713.240	5.6	
1713.255	5.6	
1713.270	5.6	
1713.285	5.5	
1713.300	5.3	
1713.315	5.5	'nxt plug 89'
1713.330	6.5	'nxt plug 89'
1713.345	6.5	'nxt plug 89'
1713.360	5.4	
1713.375	5.5	'edge'
1713.390		'shale', 'nd'
1713.405		
1713.420		
1713.435		
1713.450		
1713.465		
1713.480		
1713.495		
1713.510		
1713.525		
1713.540		
1713.555		
1713.570		
1713.585		
1713.600		
1713.615		
1713.630		
1713.645		
1713.660		
1713.675		
1713.690		
1713.705		
1713.720		
1713.735		
1713.750		
1713.765		
1713.780		
1713.795		
1713.810		
1713.825		
1713.840		
1713.855		
1713.870		
1713.885		
1713.900		
1713.915		
1713.930		
1713.945		
1713.960		
1713.975		
1713.990		



**Nini-1A: minipermeability / plug permeability  
Core log**





### Nini-3: minipermeability / plug permeability Core log

