

GEOLOGY AND ORE



EXPLORATION AND MINING IN GREENLAND

A full-page photograph of a geologist in a red and black plaid shirt, blue jeans, and a tan hat, standing on a rocky outcrop. The geologist is looking down at a clipboard. The background features a vast, icy landscape with a large glacier flowing through a valley, surrounded by dark, snow-dusted mountains under a cloudy sky. The foreground is composed of dark, jagged rocks.

**The mineral potential
of the East Greenland
Palaeogene intrusions**

The mineral potential of the East Greenland Palaeogene Intrusions

Flood basalts, dyke swarms and intrusive complexes characterise the outer coastal area of East Greenland. They are all part of the Palaeogene volcanic rifted margin that formed prior to, during, and after the onset of seafloor spreading in the North Atlantic. The magmatic province stretches from c. 66°N to c. 75°N, a distance of c. 1,300 km. The magmatism lasted for about 50 million years, from 61 to 13 Ma. More than sixty Palaeogene intrusions are recorded. The plutonic suites range in composition from ultramafic to felsic and from depleted basaltic to highly alkaline, and in form from upper crustal intrusions to

subvolcanic centres and breccia pipes with related epithermal vein systems.

Due to its remoteness, severe climate and rugged topography, the East Greenland Palaeogene province remains vastly underexplored. In spite of this, two world-class deposits – the Malmbjerg porphyry-molybdenum deposit and the Skaergaard mafic intrusion-hosted stratiform PGE-gold deposit – are known from this region that offers a promising potential for mineral deposits of similar or other types.

Flood basalts

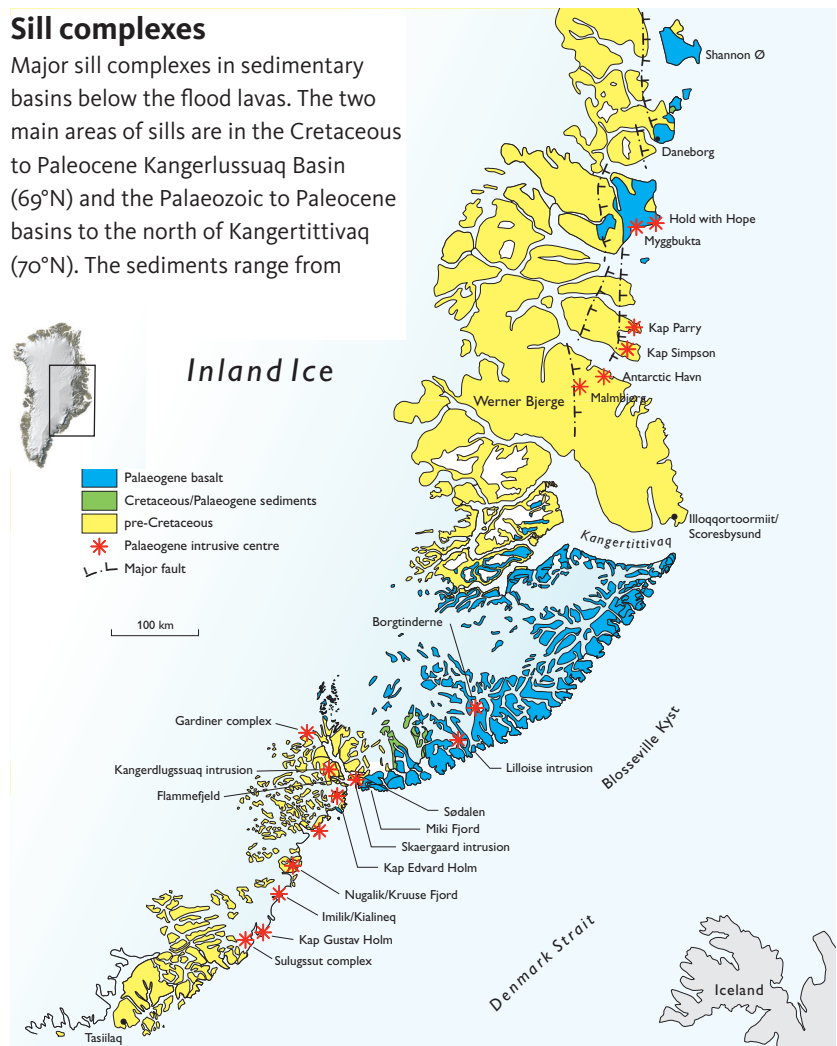
Picritic to basaltic lavas erupted locally in the Paleocene (61–57 Ma) and they were followed (57–54 Ma) by regional flood basalts up to 5 km thick. They correlate across the North Atlantic to the Faeroe Islands. The flood basalts are preserved between Kangerlussuaq and Kangertittivaq (Scoresby Sund, 68°–70°N) and are in part overlain by 13 Ma old lavas. With remnants of the flood basalt province present between 66° and 75°N, the East Greenland flood basalt province ranks with provinces like Parana and Deccan as the largest on Earth. The main volume of basalts extruded between 57 and 54 million years ago.

Early picrite lavas show strong similarities to Hawaiian lavas whereas overlying flood basalts show Icelandic affinities. A transition from plume-generated, intraplate products to spreading ridge magmatism is illustrated. A triple junction, plume-type melts and a large domal uplift suggest that the early Iceland plume surfaced in the Kangerlussuaq area (68°N).

Map of the Palaeogene East Greenland igneous province.

Sill complexes

Major sill complexes in sedimentary basins below the flood lavas. The two main areas of sills are in the Cretaceous to Paleocene Kangerlussuaq Basin (69°N) and the Palaeozoic to Paleocene basins to the north of Kangertittivaq (70°N). The sediments range from





Aerial view of flood basalts intruded by syenite at Borgtinderne. The peaks are c. 2500 m a.s.l.

arkoses and conglomerates to pyritic black shales in the Kangerlussuaq Basin, and from conglomerates, associated clastic sediments and shales to dolostones and gypsum beds in areas north of Kangertittivaq. Aggregate sill thicknesses of 1 km are recorded, and individual sills can be more than 100 m thick. The sills are dominantly basaltic but range from picritic to highly evolved basaltic compositions.

Dyke swarms

Large-volume, coast-parallel dyke swarm systems, some resembling sheeted complexes, formed in the flexured continental margin and in relationship to magmatic centres. The dyke swarms strike for hundreds of kilometres and represent major intrusion from c. 60 to at least 35 Ma. The dyke swarms are dominated by tholeiitic basalts but range from picritic tholeiites to highly alkaline nephelinites and carbonatites. All magma types found in flood basalts and central complexes are represented in the dyke swarms.

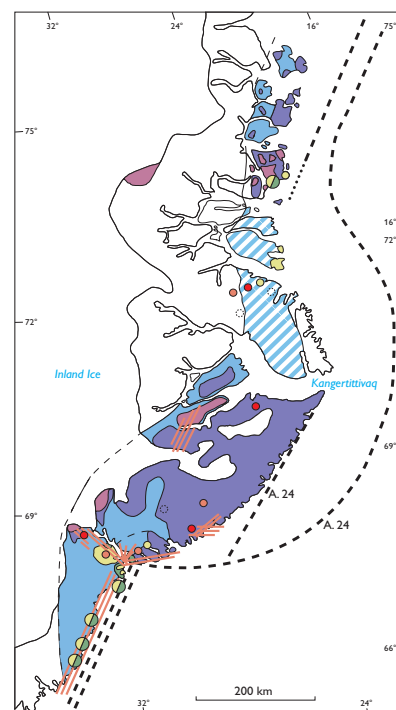
Intrusions and central complexes

Central complexes are dotted along the East Greenland coast. South of Kangerlussuaq (68°N), uplift followed by deep erosion has exposed a suite of magmatic centres. They comprise early gabbros – some with PGE and gold mineralisation – followed by intermediate to felsic intrusions, including monzonites, syenites and granites. One complex is nephelinitic with carbonatite affinities.

Twenty-eight intrusions and complexes are recorded in the Kangerlussuaq area (68°N). They range from ultramafic plugs, replenished ocean floor-type gabbro complexes (Kap Edvard Holm, c. 50 Ma), strongly fractionated closed system gabbros (Skaergaard, c. 56 Ma), dioritic intrusions and undersaturated and oversaturated syenites and granites (Kangerlussuaq, c. 50 Ma), to carbonatite-bearing nephelinitic complexes (Gardiner, c. 56 Ma). The most voluminous intrusions and complexes are the

Thematic map of the Palaeogene East Greenland igneous province. A. 24: magnetic ocean floor anomaly.

- Exposed tholeiitic flood basalts (Schematic)
- Supposed original tholeiitic flood basalt area
- Exposed alkaline basalts
- Area invaded by tholeiitic sills
- Exposed centre, single or multiple
- Not exposed centre
- Gabbroic, "tholeiitic"
- Syenitic – Granitic
- Nepheline syenite
- Alkaline – basic to salic complex
- Alkaline dike swarms





Palaeogene dyke swarm intruded into Precambrian gneiss, south of Kruuse Fjord. The cliff is c. 80 m high.

syenitic Kangerlussuaq intrusion (c. 700 km²) and the PGE-bearing Kap Evdard Holm gabbro complex (> 400 km²). To both of these are related suites of smaller and peripheral intrusions, including the subvolcanic Flammefjeld complex with molybdenum mineralisation at the margin of the Kangerlussuaq intrusion. The PGE- and gold-mineralised Skaergaard intrusion (c. 70 km²) is the best-known intrusive complex in East Greenland.

Vivid colours of argillic alteration and iron hydroxides in pyroclastic rocks, Kap Simpson complex. The peak is c. 700 m a.s.l.



Malmbjerg porphyry-molybdenum deposit related by a small granitic stock.

A suite of mainly granitic and syenitic intrusions is exposed north-east of the Werner Bjerge complex. The suite includes the roof sections of two large intrusive centres on the south shore of Kong Oscar Fjord (Oksehorn and Theresabjerg) and two major centres on the eastern headlands of Traill Ø (Kap Simpson and Kap Parry). The most northerly intrusions are found on Hold with Hope (73°30'N), and comprise the roof of a large basaltic complex at Myggbugta and felsic sheets at Kap Broer Ruys.

Mineral exploration

Commercial mineral exploration in central East Greenland was triggered by the 1948 galena-find at Mesters Vig, which led to mining of the Blyklippen Pb-Zn vein deposit between 1956 and 1962. Nordisk Mineselskab A/S was established in 1952 to investigate and mine Blyklippen, and explored 1952–84 a concession area between 70°N and 74° 30'N. The company found a large number of mineral occurrences. Most effort was put into the investigation of the Malmbjerg molybdenum deposit between 1955 and 1981 and partly in joint ventures with AMAX Inc. The Kap Simpson Syenite intrusion was also drilled.

A second large group of intrusive complexes is located in the Kong Oscar Fjord area (72°N). These are large, dominantly felsic intrusions but magnetic anomalies suggest that most are underlain by mafic complexes. The roof zone of a gabbro intrusion is the oldest part of the Werner Bjerge complex which is dominated by alkali syenites and granites and a large nepheline-syenite body. This complex shows molybdenum mineralisation, best known from the

In 1970–71, the company prospected in the region between 67° and 69°N and detected the first indications of molybdenum and gold at Flammeffeld in the Kangerlussuaq area. Detailed surface investigations were accomplished in 1982. Greenland Silver Moly Resources Aps holds the license in 2023.

In the period 1986 to 1996, Platinova A/S and partners operated in the region between 67° and 69°N. The main effort was the investigation of the noble metal potential of the Skaergaard intrusion and the Kap Edvard Holm intrusion. Other intrusions of this southern region were also investigated to various degrees. Skaergaard Minerals Corp. acquired and investigated the Skaergaard deposit in 2003–04, followed by Platina (2006–2020) and Major Precious Metals Corp. (2020–). In recent years Longland Resources Ltd and Conico have continued exploration related to mafic macrodykes and other Palaeogene intrusions in southeast East Greenland.

Mineral occurrences

Significant mineral occurrences in the Palaeogene East Greenland province are given in table-form below. In order to illustrate the province's mineral potential, some of the best investigated occurrences are described in the following sections.

Malmbjerg porphyry Mo deposit

Malmbjerg is located in the Werner Bjerge massif at 72°N. It hosts a porphyry-molybdenum deposit of the Climax-type, discovered in 1954 by the Danish East Greenland Expeditions. Investigations in 1955–61 by Nordisk Mineselskab A/S (NM), and in 1962 by a MN/AMAX Inc. joint venture, involved the excavation of three adits totalling 1,329 m, from where 146 holes were drilled, totalling some 22,000m. An ore body of 119 Mt grading 0.25% MoS₂ at a cut-off of 0.17% MoS₂ was defined in 2004. Galahad Gold Plc acquired the property, transferred the license to Inter Moly which was purchased by Quadra who in turn merged with FNX Mining to form Quadra FNX. The company and license was held by KGHM Mining until



Traditional transportation: M/S "Ejnar Mikkelsen" off Kap Edvard Holm, 1971.



Modern transportation: unloading of a Twin Otter STOL aircraft at the Sødalen airstrip, 2000.

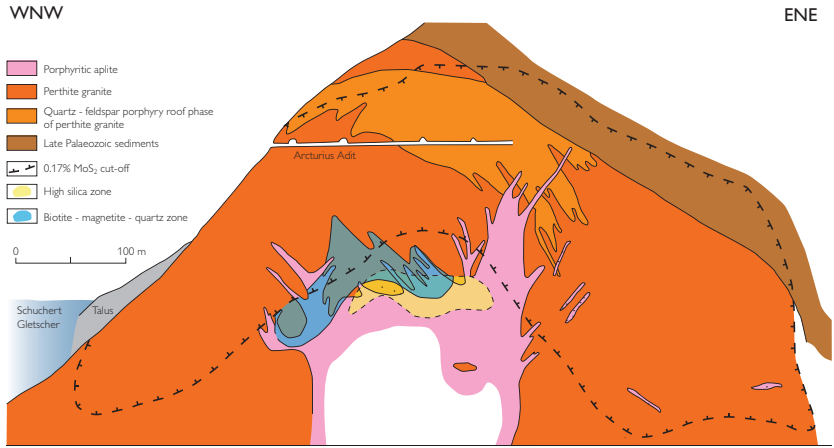
Overview of mineral occurrences in the East Greenland Palaeogene magmatic province			
Type	Commodities	Deposit/prospect	Showing/indication
Porphyry	Mo, W	Malmbjerg Flammeffeld	Mellempas Kap Simpson
Epithermal veins	Au, Ag, Pb, Zn, Cu	Blyklippen Mesters Vig	Amdrup Fjord Coastal dyke swarm Kap Simpson, others
Mafic intrusion-hosted, stratiform (Skaergaard type)	Pd, Pt, Au, Ti, Fe, V	Skaergaard intrusion Kap Edvard Holm	Nordre Aputiteq
Mafic intrusion-hosted, contact-related (Noril'sk type?)	Pt, Pd, Cu, Ni		Miki Fjord macrodyke Kruuse Fjord
Peralkaline rock-associated	Nb, Ta, Be, Zr, Y, REE		Werner Bjerge Kap Simpson Kangerlussuaq intrusion
Carbonatite-associated	Apatite, Nb, Fe		Gardiner complex
Volcanic redbed	Cu		Wiedemann Fjord

2017. The present holder is Greenland Resources Inc.

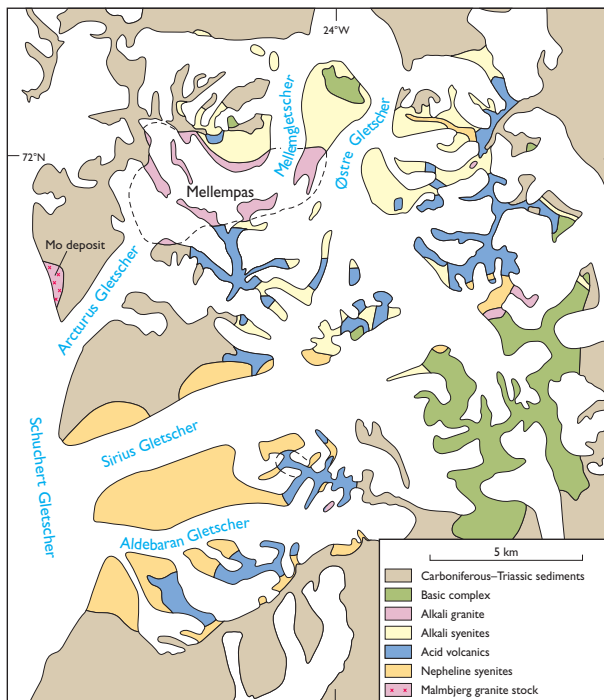
The Malmbjerg porphyry-molybdenum deposit is associated with a 25.7 Ma, composite, alkali granite stock intruded into Carboniferous sandstones. The stock is part of the intrusive Werner Bjerger alkaline complex and consists of three lithological units: perthite granite with a quartz-feldspar porphyry roof phase, a heterogeneous porphyritic aplite and porphyritic granites. Molybdenite mineralisation occurs in a 700 x 700 x 150 m inverted bowl-shaped body located mainly in the perthite granite and its porphyritic roof phase. Molybdenite occurs in veinlets forming a stockwork of mutually offsetting veins. In addition, Mo-W-bearing greisen mineralisation occurs as flat-lying veins, up to one metre thick; minor base metal veins occur distally. Pronounced alteration is associated with the mineralisation, both inside, below and above the stockwork molybdenum mineralisation.

International Molybdenum Plc (InterMoly) conducted a major field programme in 2005, that included 4,900 m of underground drilling (31 holes) and 1,776 m channel sampling along the existing adits and technical studies needed to move the project toward production. After its purchase Quadra added another 4218 m of drilled core and was granted an exploration licence.

Based on earlier drilling the present license holder Greenland Resources Inc



Vertical section through the Malmbjerg ore body. After Harpøth et al. (1986).



Geological map of the Werner Bjerger alkaline complex. Simplified after Bearth (1959).



Malmbjerg drill cores in InterMoly's 2005 camp.



Typical stockwork molybdenum mineralisation in the Schuchert adit, Malmbjerg.



Malmbjerg, seen from the south, positioned between Schuchert Gletscher (left) and Arcturus Gletscher (right).

lists a measured and indicated resource of 281 million tons grading 0.18 wt% MoS₂ at a cutoff of 0.08 wt % (2022).

Flammefjeld Mo prospect

Flammefjeld is situated at the margin of the c. 50 Ma old Kangerlussuaq intrusion (68°N). The presumed youngest intrusive rocks comprise the 39.6 Ma subvolcanic Flammefjeld complex that intruded into quartz syenites at the contact between the Kangerlussuaq intrusion and satellite intrusions. The Flammefjeld complex is a 500 x 800 m composite breccia pipe intruded by quartz-feldspar porphyries and it is surrounded by a halo of hydrothermal alteration displaying vivid yellow and red oxidation colours, and distal hydrothermal veins. The name Flammefjeld means 'flame mountain'. The igneous breccias are of various types, of which one is clearly intrusive. The quartz-feldspar porphyries occur as breccia fragments, as a major intrusive body and as late dykes.

Until now, only surface investigations have been carried out on Flammefjeld.

These include geological mapping and sampling, and geochemical surveys using rock chip samples and stream sediments. The existence of a major stockwork molybdenum mineralisation below Flammefjeld is indicated by the geochemical distribution of molybdenum and tungsten, by the patterns of wall-rock alteration (quartz-sericitic, pyritic and argillic), and by the occurrence of stockwork-type molybdenite mineralisation in breccia fragments. Analyses of ten mineralised breccia fragments range from 651 to 6,847 ppm MoS₂ with an average of 2,826 ppm. The proposed conceptual model envisages a blind Climax-type porphyry-molybdenum deposit situated 400–600 m below Flammefjeld. The ore body is modelled as an inverted-saucer shape with a diameter of 800 m, a thickness of 200 m and a grade of up to 0.5% MoS₂.

Mesters Vig Pb-Zn veins

Epithermal lead-zinc veins are abundant over some 300 km² in the Upper Carboniferous – Lower Permian clastic sediments of the Mesters Vig area (72°N). Two major vein zones are asso-

ciated with the border faults of a 4 x 12 km graben with a throw of c. 1 km but other veins occur outside the graben. The vein mineralogy is dominated by quartz, baryte, galena and sphalerite with minor calcite, pyrite and chalcopyrite, and traces of tetrahedrite. Galena and sphalerite occur as massive lenses or disseminated; the Pb/Ag ratio varies from 2,000 to 10,000. Wall-rock alteration comprises mainly silicification and kaolinisation of the sandstone host. A vertical zonation involving upwards enrichments from quartz to baryte and from copper through zinc to lead is indicated in some of the veins, but no regional zonation pattern is evident. The mineralisation is assumed to be related to the intrusion of the Werner Bjerger alkaline complex and is thus of Palaeogene age. The richest of the veins, the Blyklippen lead-zinc deposit, was mined between 1956 and 1962 by Nordisk Mineselskab A/S. Total production was 544,600 tons ore grading 9.3% Pb, 9.9% Zn and 15 ppm Ag.



Flammeffeld seen from south-east with the Kangerlussuaq intrusion in the background.

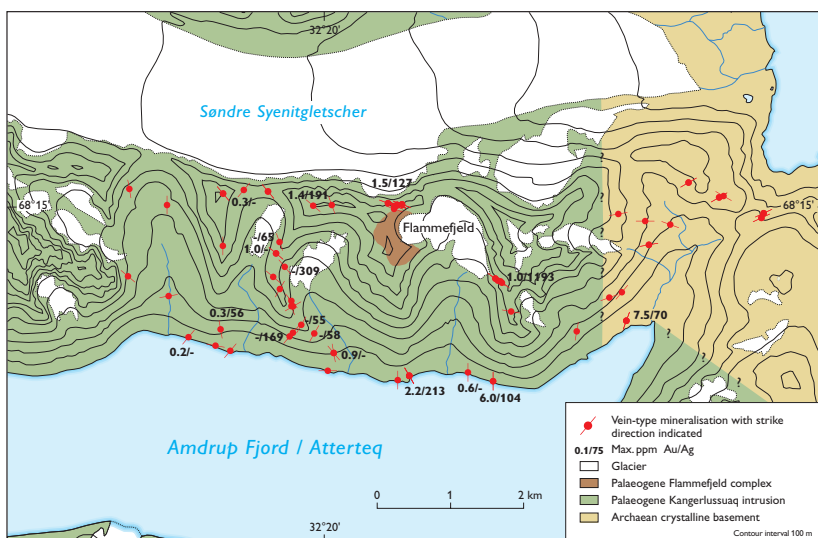
Amdrup Fjord Au-Ag-base metal veins

Epithermal base-metal veins with significant gold-silver concentrations occur in both syenitic and gneissic parts of the area north of Amdrup Fjord within a distance of 5 km from Flammeffeld. Forty veins have been located and cursorily investigated. Most have widths in the cm–dm range, but a few vein systems have widths in the metre range (up to 30 m) and can be followed over distances of several hundred metres. The veins are typically located along cross-cutting mafic dykes and developed as breccia

fillings and crustifications of epithermal character, often displaying vuggy and colloform structures (cockade structures). Gangue minerals are quartz, Ca-Mg-Mn-Fe-carbonates including rhodochrosite, and occasionally fluorite and baryte. Galena is the most common ore mineral, followed by pyrite and sphalerite. Copper minerals (chalcopyrite and tetrahedrite) are less common, and arsenopyrite occurs only sporadically. Gold occurs as electrum in association with the sulphide minerals. The sulphides occur as massive lenses and irregular seams of cm-thickness,

and disseminated, but total sulphide concentrations rarely exceed 1% over the full width of the veins. Wall-rock alteration comprises silicification, carbonatisation, kaolinisation, sericitisation and propylitisation.

Maximum recorded gold values are 1 ppm Au over 5 m in chip samples and 38.4 ppm Au from float. Maximum silver values are 531 ppm Ag over 2 m in chip samples, and 1,193 ppm Ag in grab samples. The Ag/Au ratio is about 200. The relative concentrations of the base metals are Pb > Zn > Cu. The mineralisation is also characterised by relative high manganese concentrations, and occasionally elevated arsenic, antimony, molybdenum and bismuth. Although veins are distributed over a vertical distance of 800–900 m, no general



Simplified geological map of the Amdrup Fjord area. Maximum gold and silver values are indicated where Au > 0.1 ppm and Ag > 50 ppm. From Thomassen @ Krebs (2001).

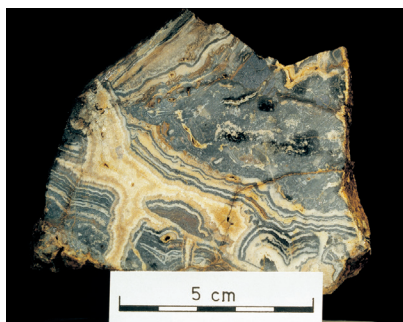


Cut surface of igneous breccia from the Flammeffeld complex. The large granitic fragmentation with stockwork molybdenum mineralisation runs 0.45% MoS₂.

hydrothermal zoning centred on Flammeffeld has been observed, apart from proximal copper–distal lead-zinc indicated in some veins. This may be due to insufficient data or to telescoping of ore zones. The mineralisation appears to be epithermal gold-silver veins of low-sulphidation type and a genetic relationship with a porphyry-type molybdenum deposit below Flammeffeld has been proposed.

Skaergaard mafic intrusion-hosted, stratiform PGE-Au deposit

The 56 Ma old Skaergaard intrusion is extensively studied and has for decades been a prime example of fractional crystallisation of basaltic melt in a closed system (68°N). Spectacular layering has made the intrusion famous. The intrusion is modelled as a box (c. 11 x 7 km and 4 km deep), with a total volume of c. 300 km³. A ferro-basalt magma filled the magma chamber. The Marginal Border Series crystallised along the walls, the Upper Border Series under the roof and the Layered Series accumulated up from the floor leaving a residual trace element rich melt to crystallise in the Sandwich Horizon c. 600 m below the roof of the intrusion. The distinct layering in the Layered Series is basin shaped. The c. 3,000 m of gabbros in the Layered Series are on basis of liquidus parageneses divided in the unexposed Hidden Zone (olivine and plagioclase), Lower Zone (olivine, plagioclase, +/- clinopyroxene, ilmenite and magnetite), Middle Zone (plagioclase, clinopyroxene, pigeonite, magnetite and ilmenite) and Upper Zone (Fe-rich olivine, plagioclase, clinopyroxene,



Cut surface of colloform structures in quartz-carbonate gangue from Amdrup Fjord epithermal vein.



Swarm of epithermal veins at the margin of Flammeffeld breccia pipe (upper right). The person clad in red in the centre of the picture is collecting a chip sample, which returned 0.3 ppm Au, 127 ppm Ag, 1.4% Pb, 3.2% Zn and 0.8% Cu over 4 m.

magnetite, ilmenite, +/-apatite and ferrobustamite). The cryptic variation in the minerals is significant. Olivine evolves from c. Fo70 to Fo1 and plagioclase from An70 to An10. The upper part of Middle Zone (Triple Group) hosts a large tonnage low-grade PGE and gold mineralisation. It is stratiform, and ten levels enriched in PGE, all perfectly concordant with the magmatic layering, are identified in the centre of the intrusion. The number of PGE levels decrease towards the margins of the intrusion, where only one level is developed. The lowest PGE level is the main reservoir of PGE. It is up to 5 m thick at 0.7 ppm cut-off with a potential for c. 35 million ounces of PGE. All other mineralized levels contain < 1 ppm PGE.

Gold is always related to the uppermost PGE level, irrespectively of the number of developed levels. The gold-rich zones are up to 2 m at 1 ppm cut-off. And a total a potential for ca. 14 million ounces of gold at a cut-off of 0.7 ppm.

The dominant precious metal phases are alloys of palladium, gold and copper, varying from Skaergaardite (PdCu) to tetraauricupride (AuCu), in central parts, replaced by vysotskite (PdS) toward margins to basement and by zviagintsevite (Pd₃Pb) toward basaltic hosts. The precious metal minerals are hosted in, or occur near, primary magmatic sulphides dominated by bornite and chalcocite. Primary droplets of copper sulphide with precious metal



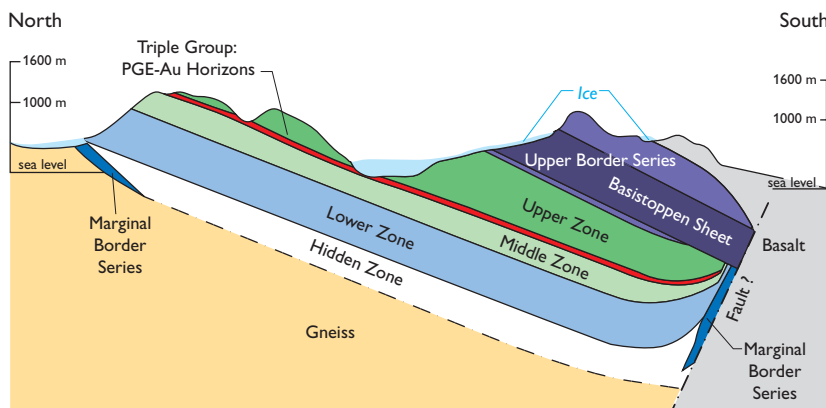
The north-eastern part of the Skaergaard intrusion with Forbindelsesgletscher to the right. The Triple Group in 1200 m peak is arrowed.

grains are common. The structure of the mineralisation and its petrography and mineralogy, suggest that the mineralisation has formed at high magmatic temperatures with little post-solidification remobilisation.

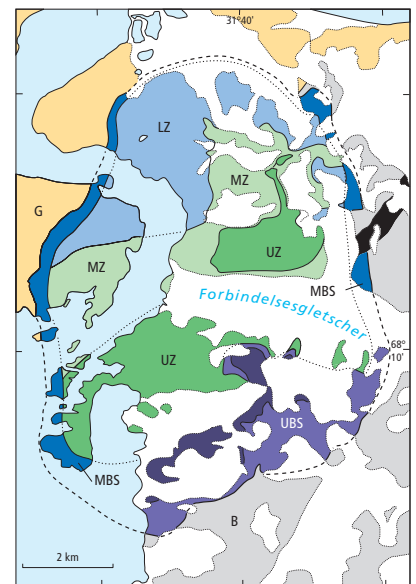
To date (2022), a total of 100 drill holes, corresponding to app. 43,000 m, have been Drilled from the surface by PlatinoA A/S and Skaergaard Minerals Corp and Major Precious Metal Corp. Skaer-

gaard Minerals listed an inferred mineral resource estimate for a “Combined Zone” with a total tonnage of 1,520 Mt grading 0.21 ppm Au, 0.61 ppm Pd and 0.04 ppm Pt. This includes 107 Mt in the Gold Zone with 1.68 ppm Au, 0.59 ppm Pd and 0.05 ppm Pt, and 104 Mt in the lower Palladium Zone with 0.11 ppm Au, 1.91 ppm Pd and 0.16 ppm Pt. Major Precious Metal Corp. lists (2022) an indicated and inferred resource of ca.

300 Mt containing 19.9 million ounces of palladium equivalents. Titanium, iron and vanadium are important commodities in the Combined Zone, but the available data are insufficient for a resource estimate. However, average bulk concentrations in a single profile across the central part of the Combined Zone are 6.6% TiO₂, 19.4% Fe₂O₃ and 840 ppm V over 44 m.



Section through the Skaergaard intrusion.



Simplified geological map of the Skaergaard intrusion.

Kap Edvard Holm mafic intrusion-hosted, stratiform PGE prospect

The 50 Ma old Kap Edvard Holm complex is a large replenished basaltic complex analogous to gabbro intrusions of the ocean floor (68°N). Only a smaller proportion of the complex is exposed due to extensive ice cover. The size is difficult to evaluate, and estimates vary between 400 and 800 km². The complex was originally subdivided into the Lower, Middle and Upper Layered Series. In a more recent consensus, the Middle Layered Series is believed to represent a separate intrusive body, and the Upper Layered Series in the southern part of the complex is believed to be the lateral equivalents of the Lower Layered Series in the northern part of the complex. The complex is intruded by a suite of later syenite and granite intrusions.

A PGE and gold anomaly has been identified over a distance of c. 30 km. The anomaly, which appears to be stratabound, runs < 1 ppm PGE and Au over a couple of metres. Anomalous high concentrations (up to 3 ppm PGE and 3 ppm Au) were identified in 1990 in one packsack drill core and in chip samples from the contact of a later syenite intrusion. Follow-up drilling the following summer did not confirm the elevated values in the anomalous core.

Miki Fjord macrodyke: mafic intrusion-hosted, contact-related PGE-Au-Cu-Ni showing

The Miki Fjord macrodyke is a NE-trending tholeiitic, gabbro dyke which is up to 500 m wide and can be followed for more than 50 km inland (68°N). Field relations and similarities to the Skaergaard intrusion suggest that the dyke is c. 55 Ma old and contemporaneous with the Skaergaard intrusion. Near Miki Fjord, parts of the roof zone are preserved in the high country, and the gabbros below the roof are strongly layered and very rich in large rafts of hornfelses lava. The lower parts of the dyke exposed at the coast are unlayered. The upper gabbros show spectacular layering due to anorthositic melt layers

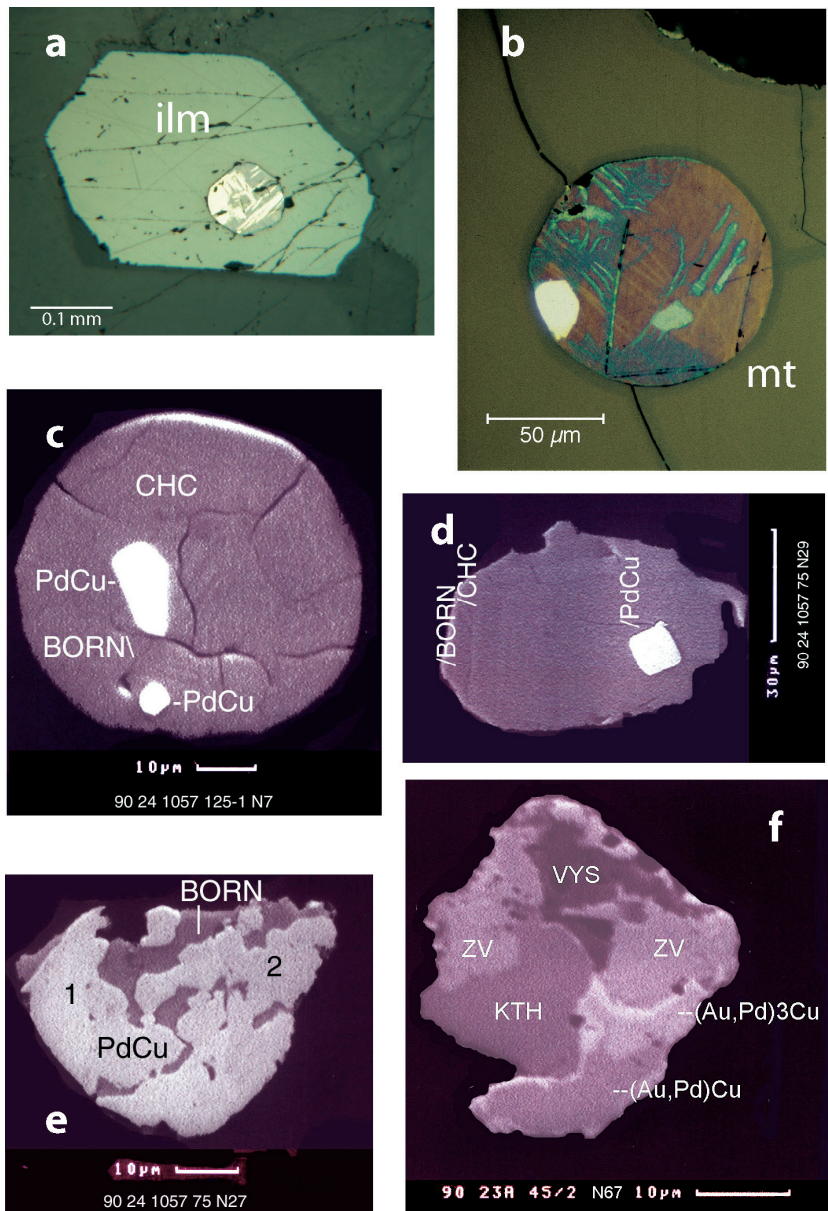
formed during anatectic melting of altered basalt inclusions.

Contacts to the Precambrian basement are characterised by rheomorphic melting and formation of pillowed contact zones where melts derived from the basement mingled with dyke melt. The contacts host showings of massive and disseminated sulphides with up to 0.1 ppm Pt, 2.2 ppm Pd, 0.3 ppm Au, 2.18% Cu and 0.06% Ni, and the existence of larger bodies of massive sulphides in the deeper parts of the dyke has been indicated by a geophysical survey. The

mineralisation is probably caused by contamination of basaltic melt.

Mineral potential

The mineral potential of the Palaeogene intrusions of East Greenland lies mainly with porphyry-type molybdenum deposits, mafic intrusion-hosted platinum group elements, gold, copper and nickel, and epithermal gold-silver. In view of the limited exploration carried out in this extensive region, chances are provided for the discovery of new deposits.



Thin section and back scatter images illustrating petrographic relationships in the Skaergaard mineralisation. a–b: droplets of intergrown bornite (born) and chalcosite (chc) enclosed in ilmenite (ilm) and magnetite (mt); c–d: skaergardite (PdCu) in sulphide droplets; e–f: free intergrowths of noble metal minerals (VYS, KTH, ZV).



Igneous layering in the Upper Zone of the Skaergaard intrusion.

Key References

- Bearth, P. 1959:** On the alkali massif of the Werner Bjerge in East Greenland. *Meddelelser om Grønland* 153, 4, 62 pp.
- Brooks, C.K. & Nielsen, T.F.D. 1982:** The Phanerozoic development of the Kangerdlugssuaq area, East Greenland. *Meddelelser om Grønland Geoscience* 9, 30 pp.
- Brooks, C.K., Tegner, C., Stein, H. & Thomassen, B. 2004:** Re-Os and $40\text{Ar}/39\text{Ar}$ ages of porphyry molybdenum deposits in the East Greenland volcanic-rifted margin. *Economic Geology* 99, 1215–1222.
- Geyti, A. & Thomassen, B. 1984:** Molybdenum and precious metal mineralization at Flammefjeld, Southeast Greenland. *Economic Geology* 79, 1921–1929.
- Harpøth, O., Pedersen, J.L., Schönwandt, H.K. & Thomassen, B. 1986:** The mineral occurrences of central East Greenland. *Meddelelser om Grønland Geoscience* 17, 138 pp.
- Howell et al. (2012):** Nature and genesis of marginal Cu-PGE-Au sulfide mineralizations in Palaeogene macrodykes of the Kangerlussuaq Region, East Greenland. *Mineralium deposits* 47, 3–21
- Nielsen T.F.D. 1987:** Tertiary alkaline magmatism in East Greenland: a review. In: Fitton, J.G. & Upton, B.G.J. (eds): *Alkaline igneous rocks*. Geological Society Special Publication (London) 30, 489–515.
- Nielsen, T.F.D. 2002:** Palaeogene intrusions and magmatic complexes in East Greenland, 66 to 75°N. *Danmarks og Grønlands Geologiske Undersøgelse Rapport* 2002/113, 249 pp.
- Nielsen, T.F.D. et al. 2015:** The Skaergaard PGE and gold deposit: the result of in situ fractionation, sulphide saturation, and magma chamber scale precious metal redistribution by immiscible Fe-rich melt. *Journal of Petrology* 56(8), 1643–1676.
- Thomassen, B. 2005:** The Blyklippen lead-zinc mine at Mesters Vig, East Greenland. *Geology & Ore* 5, 12 pp.
- Thomassen, B. & Krebs, J.D. 2001:** Palaeogene gold- and silver-bearing epithermal veins at Amtrup Fjord, southern East Greenland. *Danmarks og Grønlands Geologiske Undersøgelse Rapport* 2001/133, 78 pp.



Ministry of Mineral Resources (MMR)
Government of Greenland
Postbox 930
Imaneq 1A 201
3900 Nuuk
Greenland

Tel (+299) 34 68 00
mmr@govmin.gl
www.govmin.gl
www.greenmin.gl



GEUS

Geological Survey of Denmark
and Greenland (GEUS)
Øster Voldgade 10
DK- 1350 Copenhagen K
Denmark

Tel: (+45) 38 14 20 00
geus@geus.dk
www.geus.dk

No. 35 Jan 2024

Front cover photograph
South-west view over Amtrup Fjord
with epithermal vein in the foreground.
A grab sample returned 1.4 ppm Au, 191
ppm Ag, 1.4% Pb and 5.7% Zn.

Authors
Bjørn Thomassen &
Troels F.D. Nielsen, GEUS

Editor
Diogo Rosa, GEUS

Graphic design
Tegnestuen, GEUS

Printed
March 2024 © GEUS
Update of February 2006 issue

Printers
Stibo Complete

ISSN
1602-818X (print)
2246-3372 (online)