

The One-Stop Shop to Geoscience Data from Greenland

www.greenmin.gl

GREENLAND MINERAL RESOURCES PORTAL

NAALAKKERSUISUT
GOVERNMENT OF GREENLAND



The Greenland Mineral Resources Portal is an entry point to all available information about mineral resources in Greenland. It gives mineral exploration companies, scientists and other interested parties access to data, reports, maps and scientific background information about the geology of Greenland.

Interactive GIS-map of Greenland

The GIS map allows searches in several databases (themes), based on geographical position. You can inspect and download search results straight away as metadata and pdf-files. Data downloads are available from the web shop.

ACCESS TO DATA

Available data (GIS map and web shop)

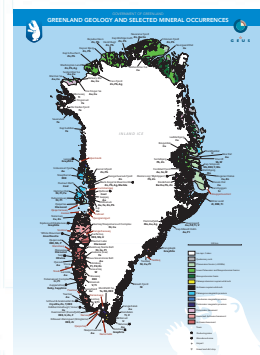
- Company reports & GEUS survey publications
- Descriptions of mineral occurrences, intrusions and magmatic complexes
- Airborne geophysical survey coverage
- Stream sediment geochemistry
- Ujarassiorit mineral hunt samples
- Digital geological map (1: 500 000)
- Georeferenced geological map sheets (1: 100 000)

[QUICK GUIDE](#)

Announcements

- 2015-03-03: **New Map viewer** [read more...](#)
- 2014-02-28: **Aeromag 2013 - Data freely available** [read more...](#)
- 2014-01-31: **New results from North Greenland added to the Zinc data Package** [read more...](#)
- 2013-11-27: **Aeromag 2013 survey completed in South-East Greenland** [read more...](#)
- 2013-03-01: **Aeromag 2012 - Data freely available** [read more...](#)

Mineral Occurrence Poster



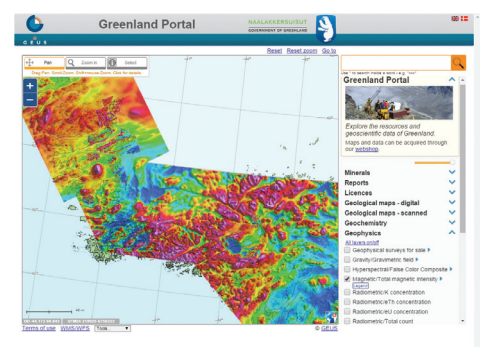
[Download as pdf file \(~4.5 Mb\)](#)

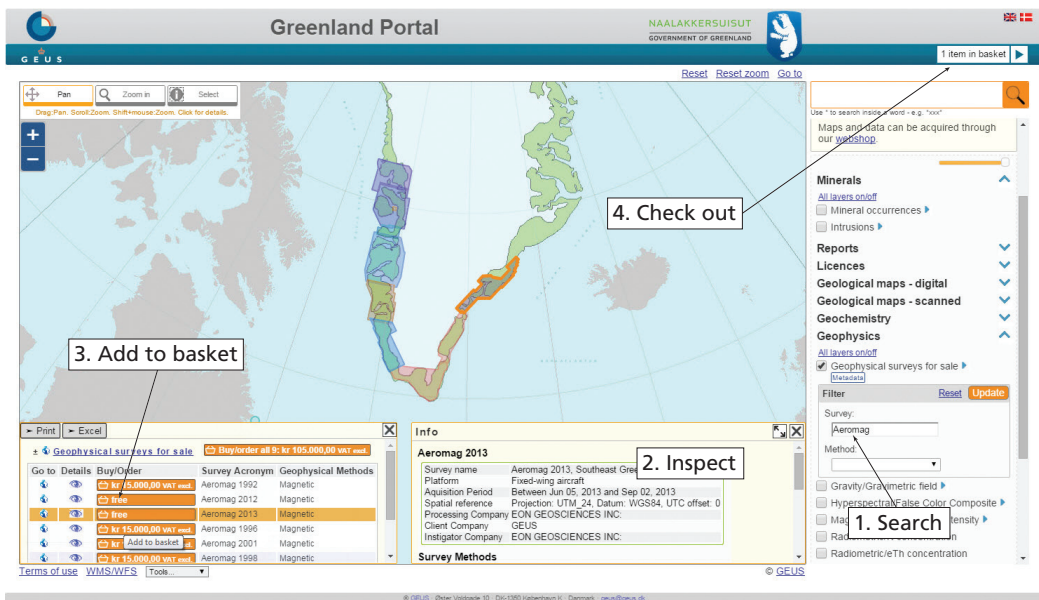
The Ministry of Mineral Resources (Government of Greenland) and the Geological Survey of Denmark and Greenland (GEUS) released a new, enriched version of the Greenland Mineral Resources Portal in 2015 including a web shop through which a wealth of geoscience data can be acquired – many free of charge.

You will find the portal at www.greenmin.gl

Available themes, January 2016

- Company reports & GEUS survey publications
- Descriptions of mineral occurrences and magmatic complexes
- Airborne geophysical survey coverage and data
- Geochemistry of stream sediment, soil and scree samples as well as heavy mineral concentrates
- Analyses of Ujarassiorit samples
- Digital geological maps
- Scanned, georeferenced 1:100 000 geological map sheets.
- Aerial photos





Interactive Map Search

The interactive map gives access to many different types of data from the underlying databases that are continuously updated and supplemented to ensure high quality and comprehensive datasets. Different kinds of search and filtering functionality makes custom queries easy and metadata as well as detailed information for individual data records provides good information about the content. For some data types such as geophysical and

geochemical data simple add to basket buttons makes it easy to gather data of interest that can then subsequently be checked out and downloaded. Additional types of data as well as new or improved functionality are continuously added to the Greenland Mineral Resources Portal to fulfil the vision of the portal as being the one-stop shop to geoscience information from Greenland.



<p>Agatdal 70 V.1 Nord</p> <p>Agatdal 70 V.1 Nord - Geological map of Greenland 1:100 000 Georeferenced scanned map in tiff-format</p> <p>DKK 0,- VAT excl.</p>	<p>Agpat 70 V.2 Nord</p> <p>Agpat 70 V.2 Nord - Geological map of Greenland 1:100 000 Georeferenced scanned map in tiff-format</p> <p>DKK 0,- VAT excl.</p>	<p>Agto 67 V.1 Nord</p> <p>Agto 67 V.1 Nord - Geological map of Greenland 1:100 000 Georeferenced scanned map in tiff-format</p> <p>DKK 0,- VAT excl.</p>
<p>Ataa 69 V.3 Nord</p> <p>Ataa 69 V.3 Nord - Geological map of Greenland 1:100 000 Georeferenced scanned map in tiff-format</p> <p>DKK 0,- VAT excl.</p>	<p>Bjørnesund 62 V.1 Nord</p> <p>Bjørnesund 62 V.1 Nord - Geological map of Greenland 1:100 000 Georeferenced scanned map in tiff-format</p> <p>DKK 0,- VAT excl.</p>	<p>Buksefjorden 63 V.1 Nord</p> <p>Buksefjorden 63 V.1 Nord - Geological map of Greenland 1:100 000 Georeferenced scanned map in tiff-format</p> <p>DKK 0,- VAT excl.</p>
<p>AEM Greenland 1994</p> <p>Raw geophysical data and reports as they have been received from the contractor.</p> <p>DKK 15.000,- VAT excl.</p>	<p>AEM Greenland 1995</p> <p>Raw geophysical data and reports as they have been received from the contractor.</p> <p>DKK 15.000,- VAT excl.</p>	<p>AEM Greenland 1996</p> <p>Raw geophysical data and reports as they have been received from the contractor.</p> <p>DKK 15.000,- VAT excl.</p>
<p>AEM Greenland 1997</p> <p>Raw geophysical data and reports as they have been received from the contractor.</p> <p>DKK 15.000,- VAT excl.</p>	<p>AEM Greenland 1998</p> <p>Raw geophysical data and reports as they have been received from the contractor.</p> <p>DKK 15.000,- VAT excl.</p>	<p>AEM Greenland 1998-2</p> <p>Raw geophysical data and reports as they have been received from the contractor.</p> <p>DKK 15.000,- VAT excl.</p>

Web Shop

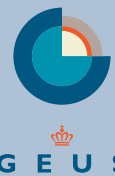
Numerous products including geophysical and geochemical data, scanned geological map sheets and digital geological maps as GIS files can be

acquired through the integrated web shop. Most products are free of charge, whereas some can be purchased by credit card. Selected products can be downloaded after a simple online registration.



The Ministry of
Mineral Resources (MMR)
Postbox 930
Imaneq 1A, 201
3900 Nuuk
Greenland

Tel: (+299) 34 68 00
Fax: (+299) 32 43 02
E-mail: misa@nanoq.gl
Internet: www.govmin.gl
www.naalakkersuisut.gl



Geological Survey of Denmark
and Greenland (GEUS)
Øster Voldgade 10
DK-1350 Copenhagen K
Denmark

Tel: (+45) 38 14 20 00
Fax: (+45) 38 14 20 50
E-mail: geus@geus.dk
Internet: www.geus.dk

Authors
Mikael Pedersen, GEUS

Editors
Lars Lund Sørensen, GEUS

Layout
Mikael Pedersen, GEUS
Annabeth Andersen, GEUS

Printed
January 2016 © GEUS

Printers
GEUS

ISSN
1602-8171