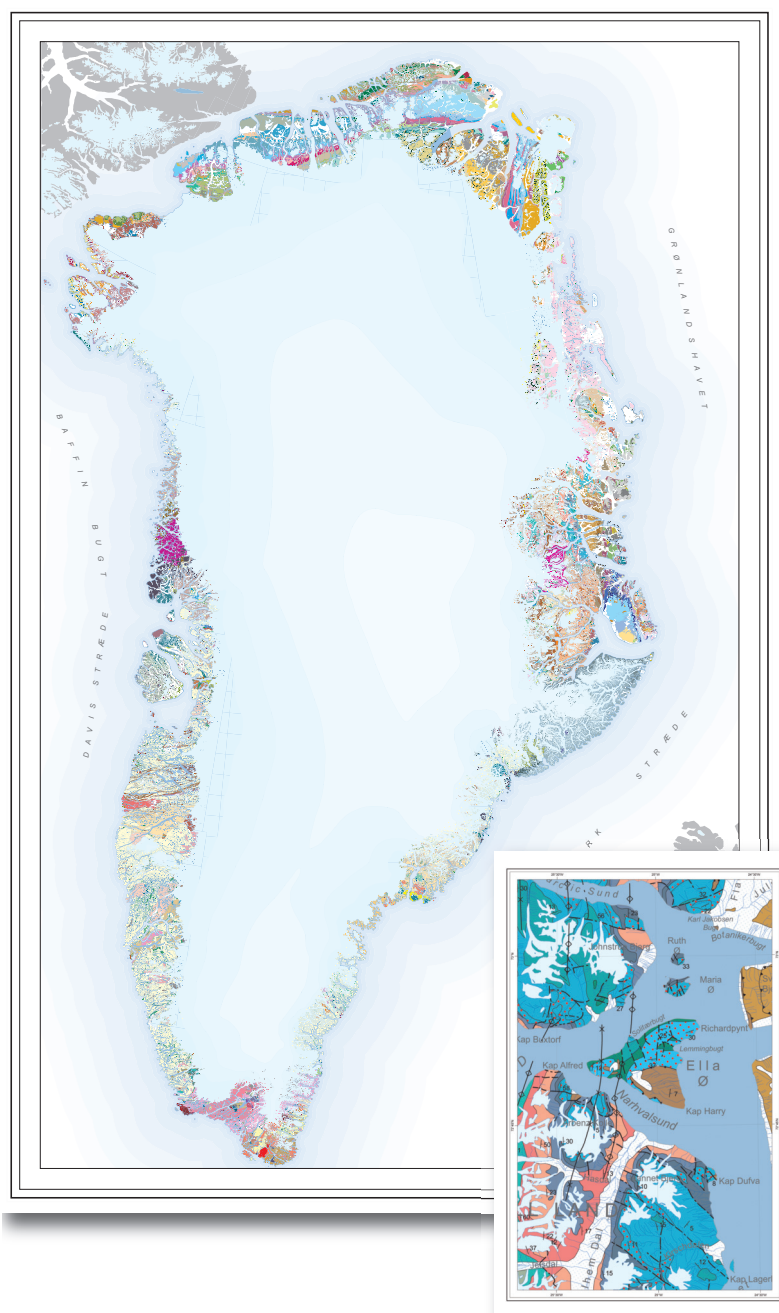


# Seamless Geological Map of Greenland

## Scale 1: 500 000



A new seamless geological map of Greenland has been released by GEUS. The map is based on a compilation of 14 maps in scale 1 : 500 000 that were published by GGU and GEUS in the period between 1982 and 2010. A key task in producing the map has been to implement a uniform geological nomenclature for the entire map.

The new map integrates the harmonised 1: 250 000 map compilation from North and North-East Greenland produced by the so-called Dancea project (Christoffersen & Jepsen, 2007). This area is dominated by Proterozoic to Mesozoic sedimentary basins. For the western, southern and south-eastern parts of Greenland, which mainly comprise Archaean and Palaeoproterozoic basement rocks, a completely new harmonised legend has been established. The entire seamless map compilation comprises a total of 443 geological units. In this first version of the map, line and point themes are not included.

**A more detailed description of the map compilation procedures can be found in:**

**Pedersen, M., Weng, W.L., Keulen, N.T., & Kokfelt, T.F. 2013:** The 1:500 000 Geological Map of Greenland – a new seamless, digital product. Geological Survey of Denmark and Greenland Bulletin 28 (In press).

**Recommended citation for the map:**

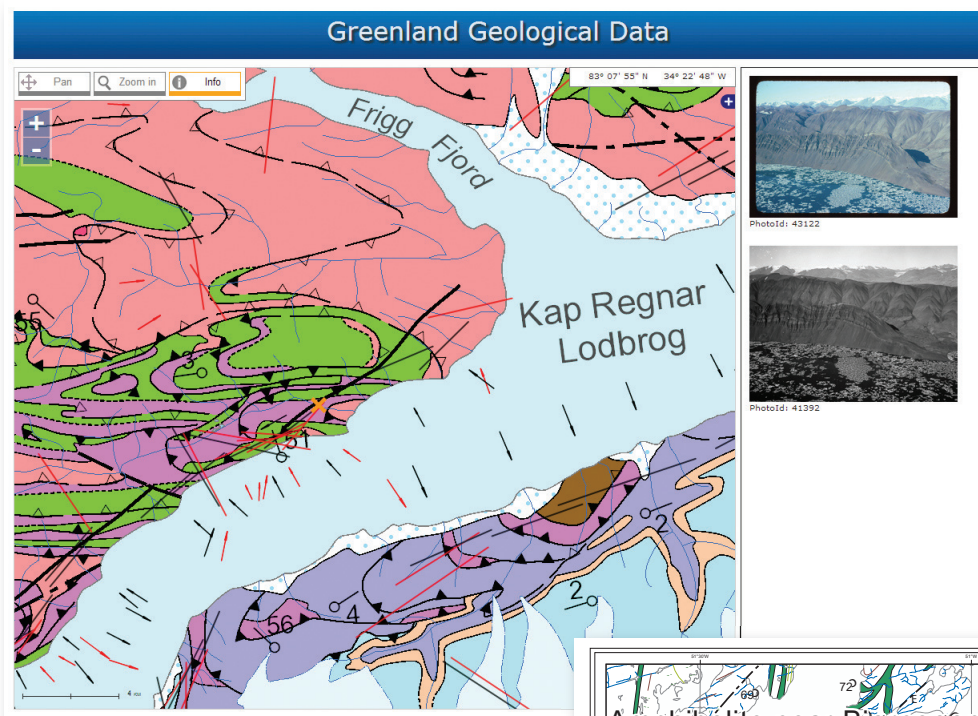
**Kokfelt, T.F., Keulen, N.T., Weng, W.,L., & Pedersen, M. 2013:** Geological map of Greenland, 1 : 500 000, April 2013. Copenhagen: Geological Survey of Denmark and Greenland.

**Authors address:**

Geological Survey of Denmark and Greenland, Øster Voldgade 10, 1350 Copenhagen K, Denmark. E-mail: [tfk@geus.dk](mailto:tfk@geus.dk)

**References:**

**Christoffersen, M. & Jepsen, H.F. 2007:** 49 Geological maps of North and North-East Greenland 1: 250 000 (digital compilation). Geological Survey of Denmark and Greenland.

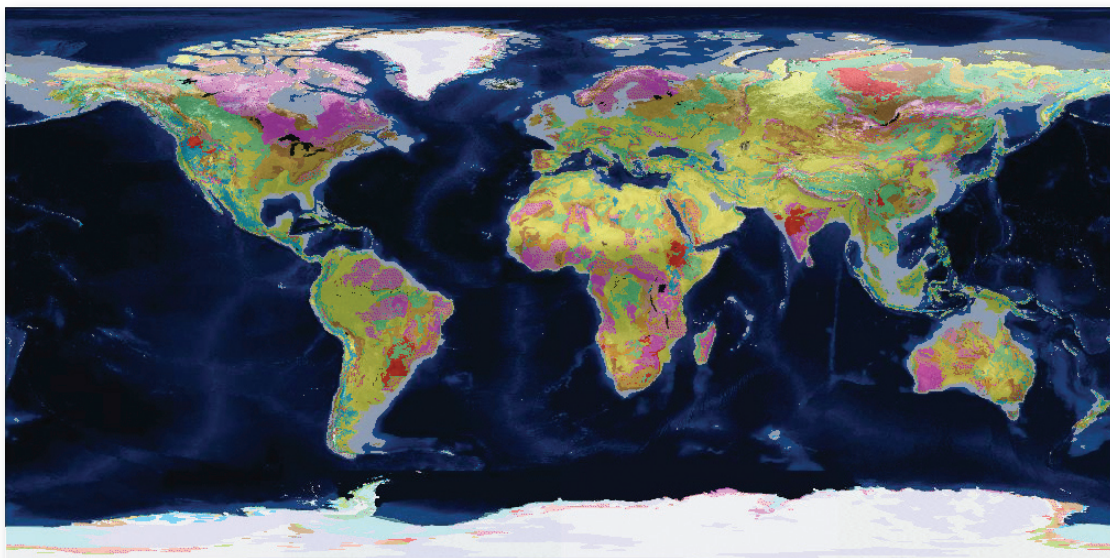
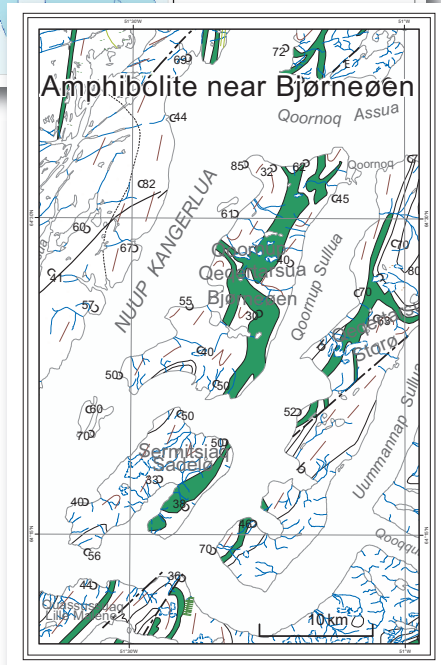


#### GeoGreen web map

A publicly available online version of the seamless map can be found at <http://data.geus.dk/map2/geogreen>. In this interactive map application, it is possible to investigate the geology of Greenland by zooming in on areas of interest. Information about the geological units can be obtained by clicking on polygons on the map and inspect the results in the side panel. The GeoGreen web application also gives access to additional data (p.t. scanned maps, oblique photos from North and North-East Greenland and published geological profiles).

#### GIS analyses

The new seamless geological map is well suited for analyses in a standard GIS environment. The GIS data (either the full dataset or parts of it) can be acquired from GEUS. Please contact Willy L. Weng ([ww@geus.dk](mailto:ww@geus.dk)) for details.



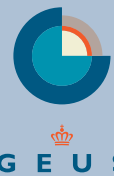
#### OneGeology

The seamless 1: 500 000 scale geological map of Greenland is one of the GEUS contributions to the global OneGeology portal aiming at putting together a geological map of the world (<http://portal.onegeology.org>).



Ministry of Industry and  
Mineral Resources (MIM)  
Postbox 1601  
Imaneq 1A, 201  
3900 Nuuk  
Greenland

Tel: (+299) 34 50 00  
Fax: (+299) 32 43 02  
E-mail: [isiin@nanoq.gl](mailto:isiin@nanoq.gl)  
Internet: [www.govmin.gl](http://www.govmin.gl)  
[www.naalakkersuisut.gl](http://www.naalakkersuisut.gl)



Geological Survey of Denmark  
and Greenland (GEUS)  
Øster Voldgade 10  
DK-1350 Copenhagen K  
Denmark

Tel: (+45) 38 14 20 00  
Fax.: (+45) 38 14 20 50  
E-mail: [geus@geus.dk](mailto:geus@geus.dk)  
Internet: [www.geus.dk](http://www.geus.dk)

#### Authors

Thomas F. Kokfelt, GEUS  
Nynke Keulen, GEUS  
Willy L. Weng, GEUS  
Mikael Pedersen, GEUS

#### Editor

Mikael Pedersen, GEUS

#### Layout

Annabeth Andersen, GEUS

#### Printed

April 2013 © GEUS

#### Printers

GEUS

#### ISSN

1602-8171