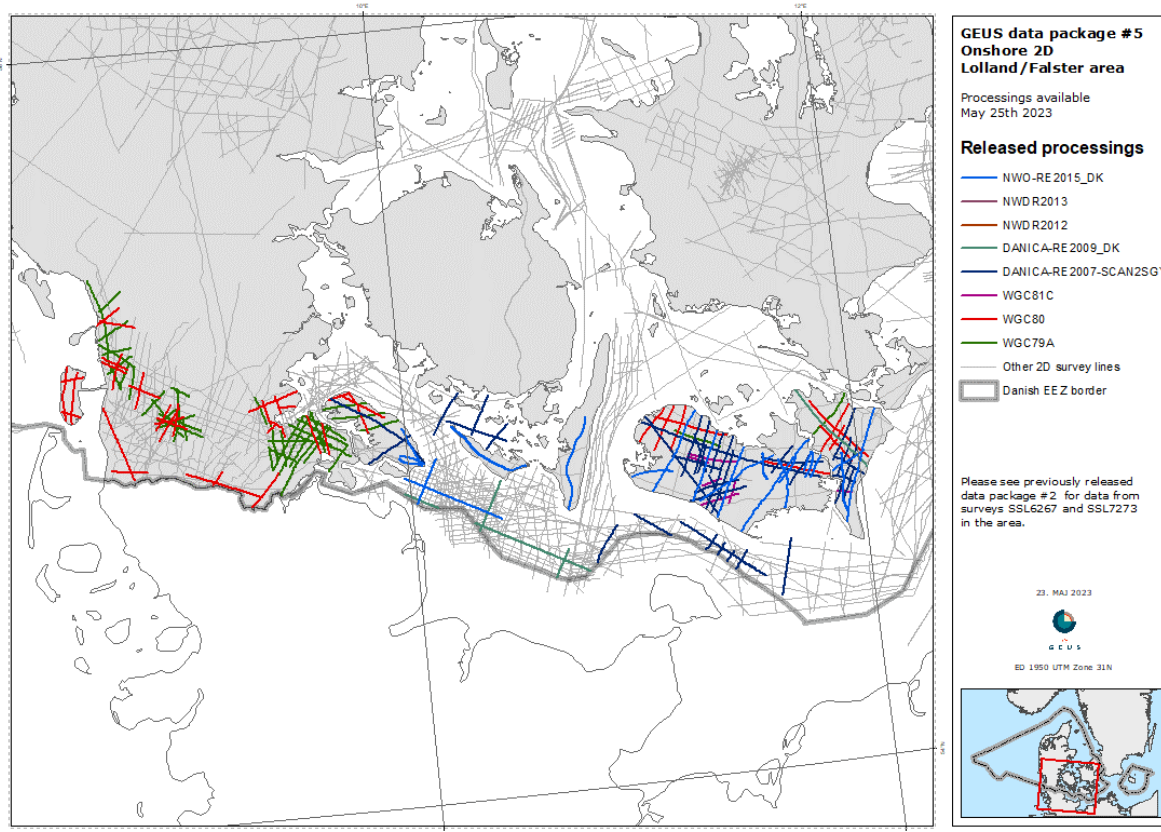


Data package #5: Onshore 2D data – Lolland-Falster

Available processings

- Knowledge of the Danish underground is crucial for the green transition and associated large construction projects, and GEUS has therefore decided to make data from the Danish deep subsurface free of charge
- Seismic 2D data will be released during 2023 and 2024, and as a part of this process the fifth data package is now available to the public
- The output is organized in 8 separate datasets (original processings and released reprocessings of varying vintage, data-availability and data-quality) primarily on the islands of Lolland and Falster, with some datasets also including lines in South Jutland
- Please notice that data from vintage processings SSL6267 and SSL7273 in the area was previously released and are available in GEUS data package 2: Onshore2D – part 1



General list of deliverables:

(Deliverables will vary for the individual Processing's. For specific availability, please refer to the Processing data content sheets)

- Navigation data
- Seismic data in digital SEG-Y-format
 - *Be aware that some reprocessing's only contains parts of the displayed lines.*
 - *To verify the actual data extent please consult the SP/CDP interval in the relevant content sheets*
- Velocity data
- Selected scanned 2D displays in tif-format
 - Black/white dataset, 400 dpi
 - Greyscale dataset (400dpi) available upon request
 - Additional displays can be scanned and delivered upon request (additional cost)
- Relevant reports